



# Samsung Galaxy S Blaze Frame Replacement

Prerequisite Only

Written By: Daniell Gianelloni



---

## INTRODUCTION

The frame replacement is the next major component that will be required to be removed.

---



### TOOLS:

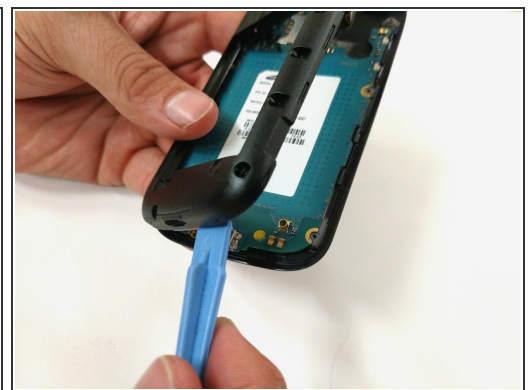
- [Phillips #00 Screwdriver](#) (1)
  - [iFixit Opening Tools](#) (1)
-

## Step 1 — Frame



- Use a Phillips head screwdriver size 00.
- Remove the 4mm screws from the frame. The screws can be removed in any order.
- ⓘ The eight screws are all the same size.

## Step 2



- Use the blue plastic opening tool to remove the frame from the device.
- Work around the device with the opening tool until the frame is completely off the device.
- ⓘ You may need to use some force to pry the frame off of the device.

To reassemble your device, follow these instructions in reverse order.