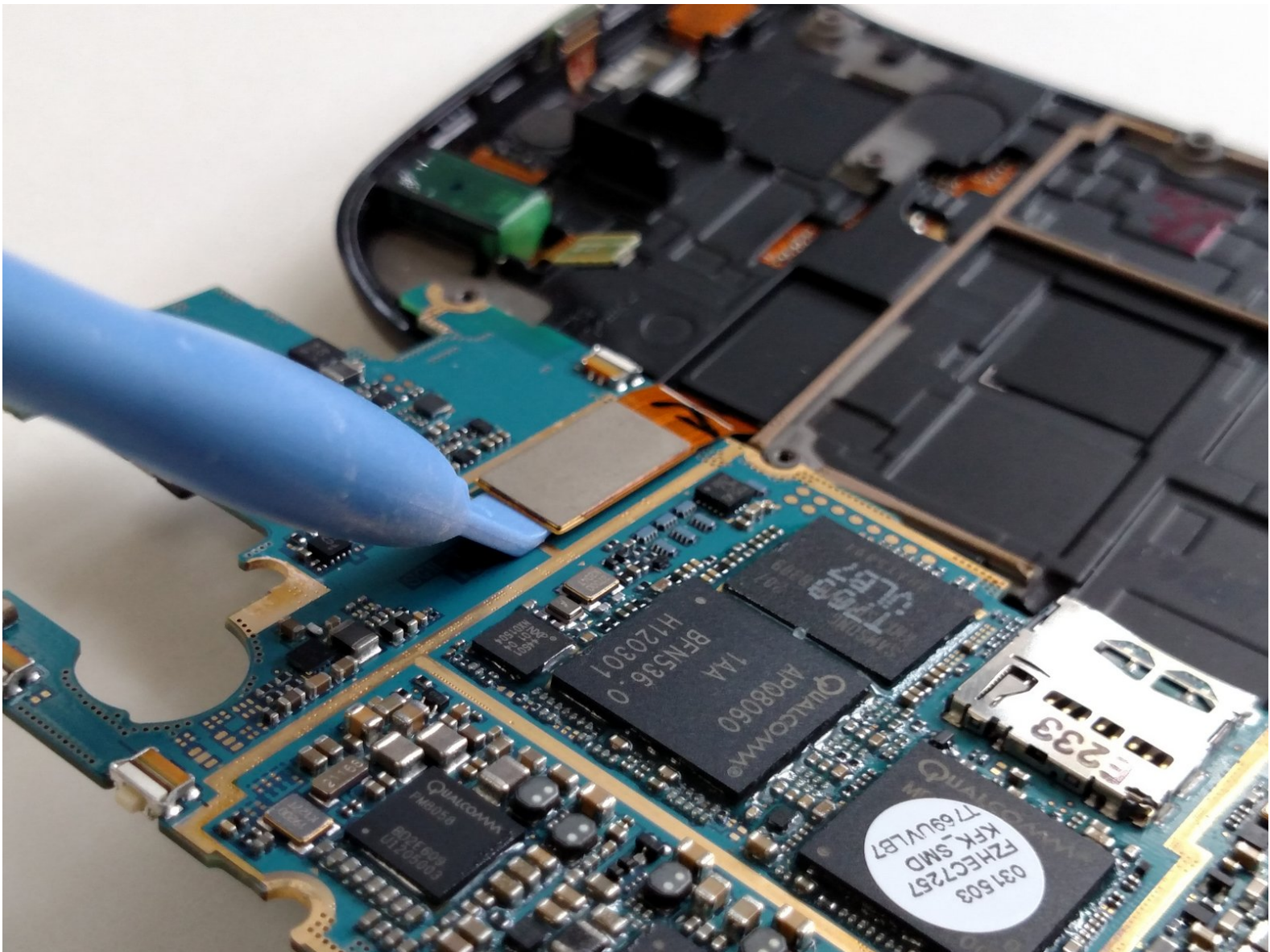




# Samsung Galaxy S Blaze Motherboard Replacement

This guide will show you how to properly replace the motherboard on a Samsung Galaxy S Blaze 4G.

Written By: Rene Bolanos



This document was generated on 2019-09-23 08:27:29 PM (MST).

## INTRODUCTION

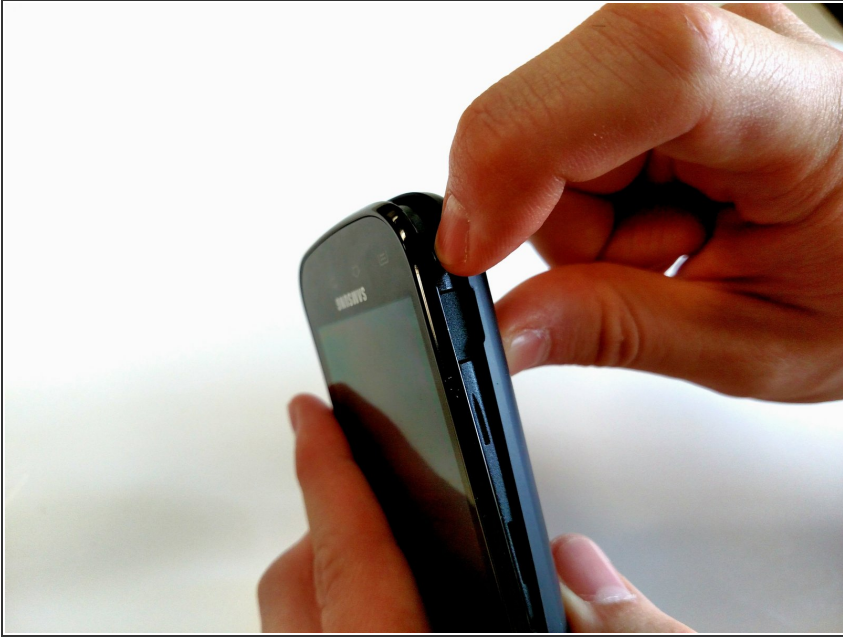
This guide will show you how to properly replace the motherboard on a Samsung Galaxy S Blaze 4G. The replacement of the motherboard is moderately easy and may take some time. Be cautious, the screws for the phone can be easily lost.



### TOOLS:

- [Phillips #00 Screwdriver](#) (1)
  - [iFixit Opening Tools](#) (1)
-

## Step 1 — Motherboard



- Remove the battery cover from the device.

## Step 2



- Remove the battery from the device.

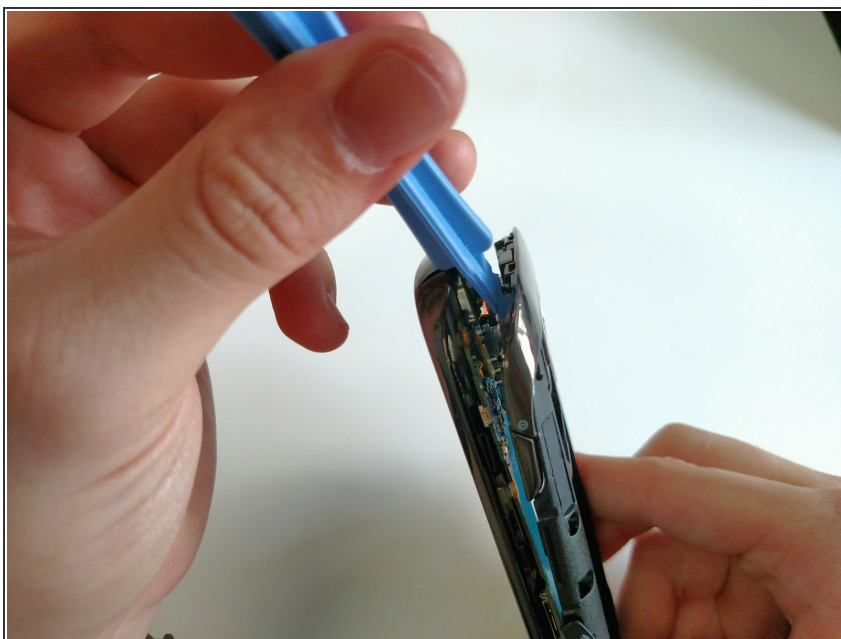


## Step 3



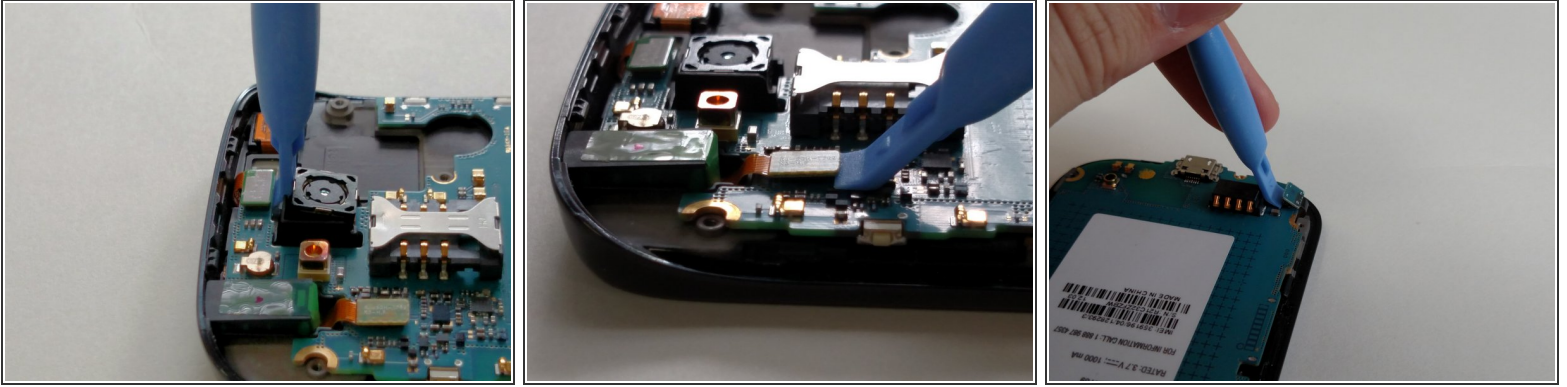
- Use a Phillips head screwdriver size 00.
- Remove the 4mm screws from the frame. The screws can be removed in any order.
- ⓘ The eight screws are all the same size.

## Step 4



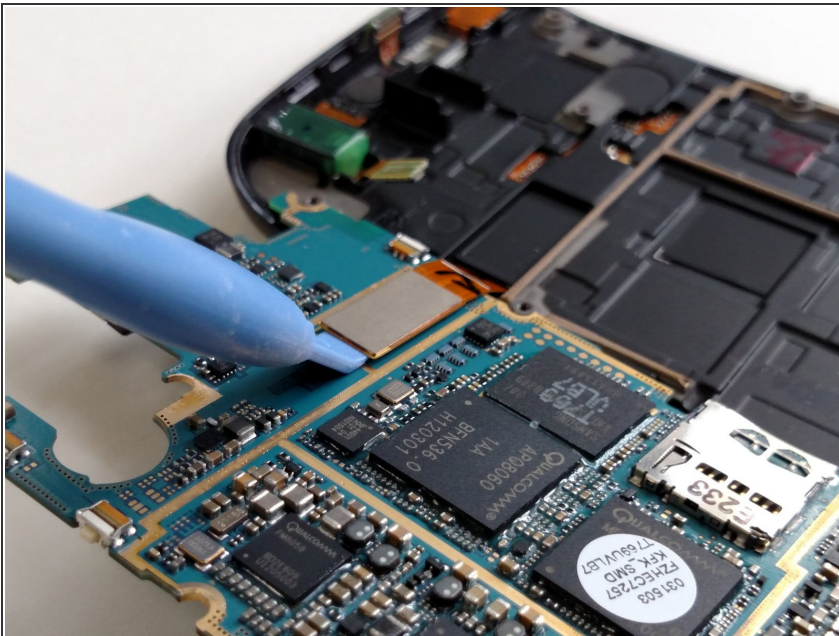
- Use the blue plastic opening tool to remove the frame from the device.
- Work around the device with the opening tool until the frame is completely off the device.
- ⓘ You may need to use some force to pry the frame off of the device.

## Step 5



- i The motherboard is held onto the device by 4 ribbon cable connectors.
- i The first 3 ribbon cable connectors are on the same side.
  - Unlatch the first 3 ribbon cable connectors with the blue plastic opening tool.

## Step 6



- i Turn the motherboard over to reveal the last ribbon cable connector.
  - Unlatch the final ribbon cable connector with the blue plastic opening tool.
  - Remove the motherboard from the device.

To reassemble your device, follow these instructions in reverse order.

If there is something wrong with your device, try this: [Samsung Galaxy S Blaze 4G Troubleshooting](#)

