



Samsung Galaxy S Blaze SD Card Slot Cover Replacement

This guide will show how to properly replace the SD card slot cover on a Samsung Galaxy S Blaze 4G.

Written By: Rene Bolanos



INTRODUCTION

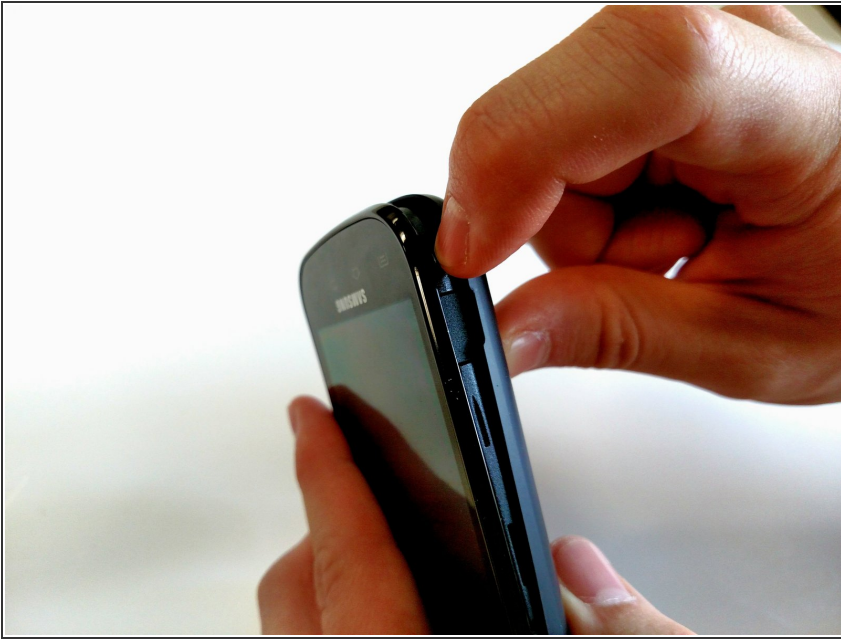
This guide will show how to properly replace the SD card slot cover on a Samsung Galaxy S Blaze 4G. The replacement of the SD card slot cover is an easy process with no surprises. You will need to be careful while taking out the screws, the screws will damage easily.



TOOLS:

- [Phillips #00 Screwdriver](#) (1)
 - [iFixit Opening Tools](#) (1)
-

Step 1 — SD Card Slot Cover



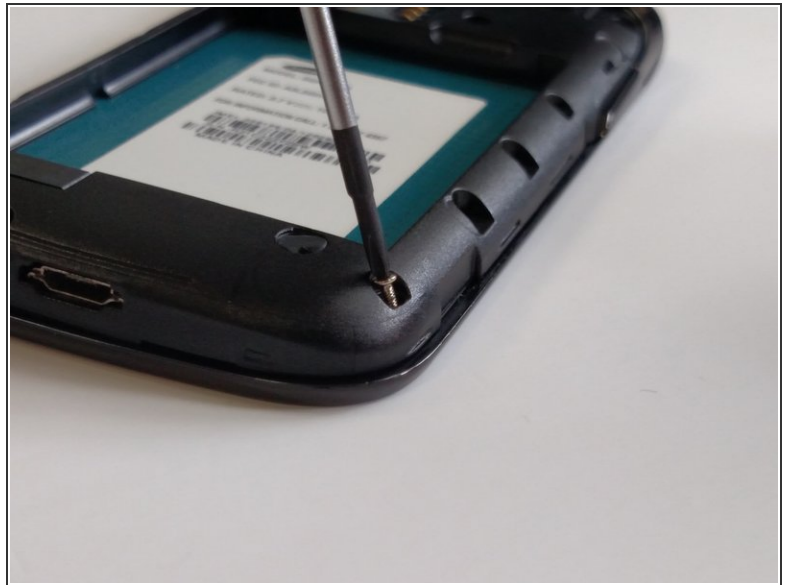
- Remove the back plate to reveal the battery.

Step 2



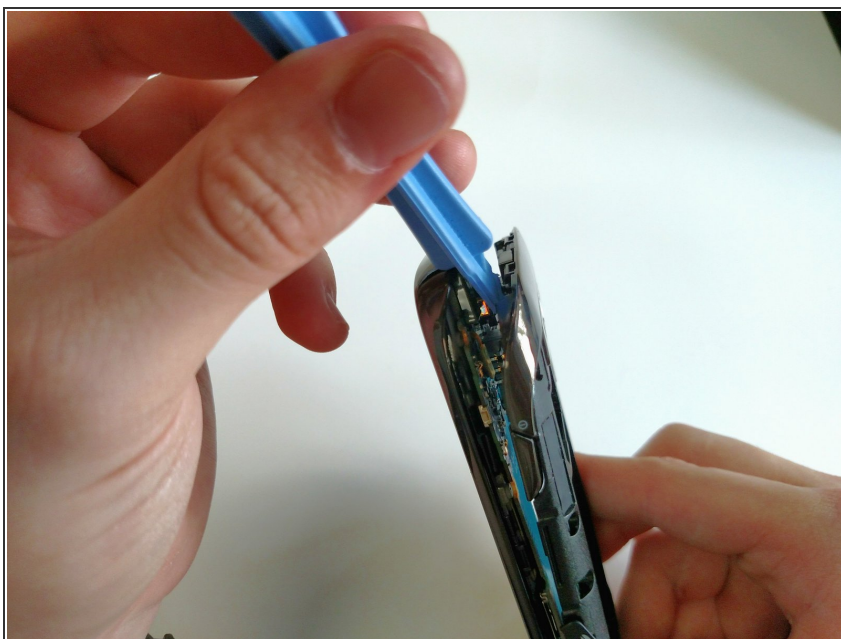
- Remove the battery from the device.

Step 3



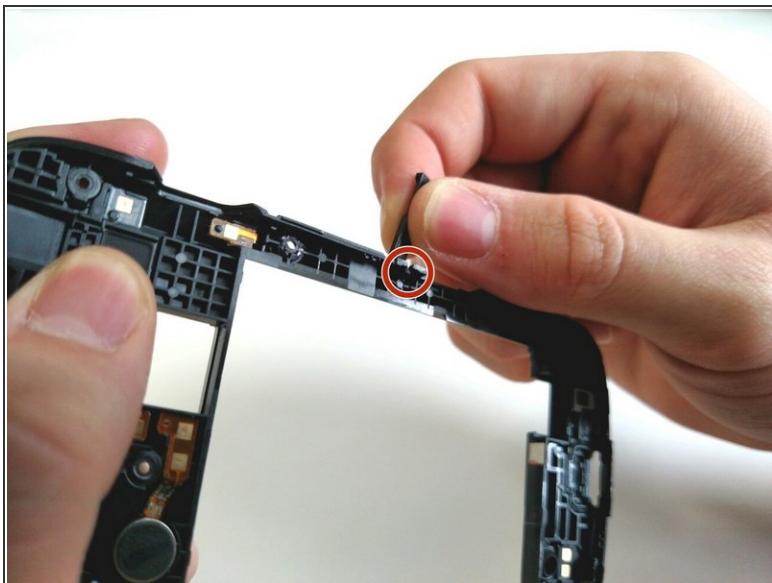
- Use a Phillips head screwdriver size 00.
- Remove the 4mm screws from the frame.
- ⓘ The eight screws are all the same size.

Step 4



- Use the blue plastic opening tool to pry the frame off the phone.
- Work around the phone with the blue plastic opening tool until the frame is off.
- ⓘ You may need to use a bit of force to pry off the frame.

Step 5



- The SD cover is held in place on the frame by a small tab.
- Unhook the tab of the SD card slot cover from the frame of the device.
- This is what the tab of the SD card slot cover looks like.

To reassemble your device, follow these instructions in reverse order.

If there is something wrong with your device, try this: [Samsung Galaxy S Blaze 4G Troubleshooting](#)