



Samsung Galaxy S Blaze Teardown

This is a teardown guide to iFixit of a Samsung Galaxy S Blaze.

Written By: Jhordan



INTRODUCTION

Taking a Samsung Galaxy S Blaze apart in case you need to fix it, is not hard.



TOOLS:

- [Phillips #2 Screwdriver](#) (1)
 - [iFixit Opening Tools](#) (1)
-

Step 1 — The Samsung Galaxy S Blaze



- The Samsung Galaxy S Blaze is a 121.9 x 63 x 11.2 mm (4.80 x 2.48 x 0.44 in) phone.
- Weights 127.6 g (4.48 oz).
- The resolution is 480 x 800 pixels (~235 ppi pixel density).
- Released on March of 2012.

Step 2 — Battery



- Take the back plate off.
- Remove the battery.

Step 3 — Back Panel



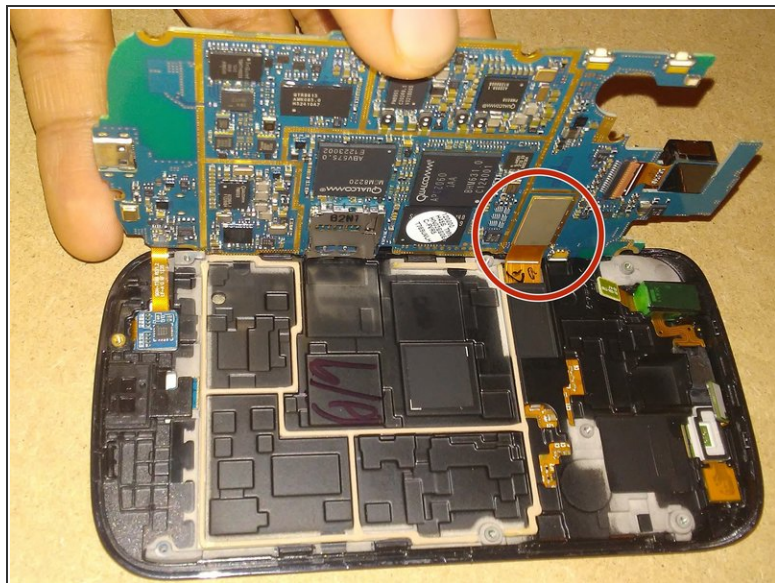
- Use the Phillips size 00.
- Remove the 8 4mm visible screws.
- Then proceed to unclipping the back panel, starting from the top with the blue plastic opening tool.

Step 4



- Once you have taken the back panel you should be able to see the back of the motherboard.
- The vibrator.
- The 5 MP camera.

Step 5 — Motherboard



- Unclip all 4 ribbons.
- i* 3 of the ribbons are located on one side.
- i* The 4th ribbon can be found when you flip the motherboard.

Step 6 — All the parts



- These are all the parts that will come from the phone if you decide to tear it down.

