



# Samsung Galaxy S II Micro-USB Port Replacement

This guide describes the process for replacing the USB port on a Samsung Galaxy S II that will no longer charge.

Written By: Nathan Burget



## INTRODUCTION

Does your phone not charge? Does the battery die quickly, no matter how long it stays on the charger? It could be a sign that a connection has come loose or that the port has been damaged. Replacing it could solve your problem.

**Note that there are several different models of the S2 but this guide should help whether you have an international version of the phone or not.**



### TOOLS:

- [Phillips #0 Screwdriver](#) (1)
- [iFixit Opening Tools](#) (1)



### PARTS:

- [Samsung Galaxy S II Replacement Charging Port Connector](#) (1)

## Step 1 — Micro-USB Port



- 1. Remove the rear casing and the battery.
- 2. Remove the SD card and the sim card (if needed).

## Step 2




- Use the Phillips screwdriver to remove the 7 Phillips head screws, indicated in the picture.

## Step 3



- Move along the outside edge with the plastic tool, popping the connections to the phone.

 The volume rocker and power button housing can be easily lost when you remove the back housing. Make sure you keep it where you can find it.

## Step 4



- Remove the two black Phillips head screws located at the top left and the bottom right of the logic board.



## Step 5



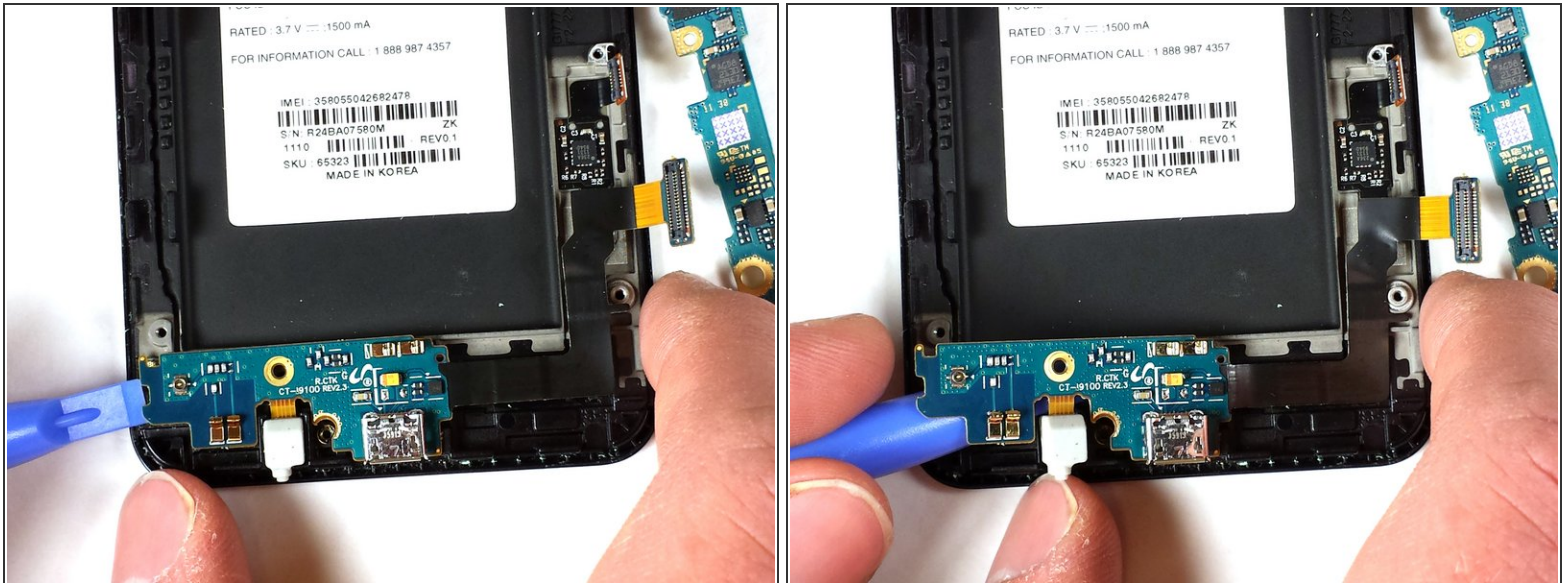
- Disconnect all push connectors and the antenna cable with a small pull shown on the left.

## Step 6



- Prop the motherboard on the side of the phone. Then take off the power button board (near the top of the antenna wire).
- Remove the **2** Phillips head screws located at the bottom of the charging board.

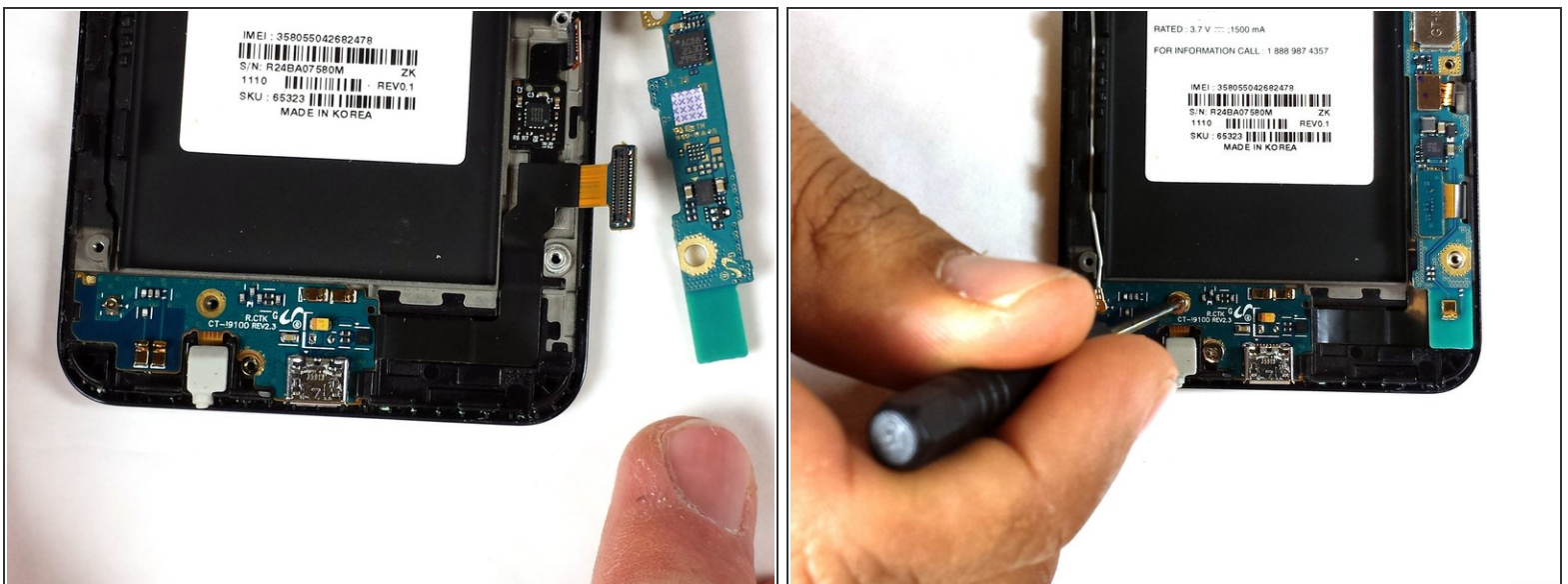
## Step 7



- Remove the board by prying off one end and moving toward the other.

**i** A hair dryer can help loosen the adhesive, but it is optional.

## Step 8



- Replace the old board with a new one.

To reassemble your device, follow these instructions in reverse order.