



# Samsung Galaxy S II Teardown

This teardown will include instructions on how to get to the plastic midframe on this type of device.

Written By: Vanessa Cardenas



---

## INTRODUCTION

I will teach you how to get down to the midframe. The steps are easy and fast.



### TOOLS:

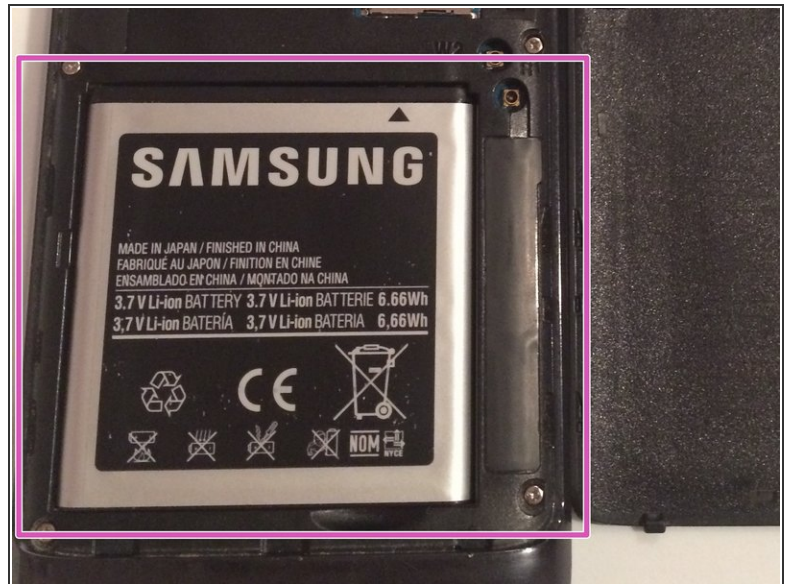
- [iFixit Opening Tools](#) (1)
-

## Step 1 — Samsung Galaxy S II Teardown



- Step 1- Use an opening tool, or your fingernail into the opening at the top near the headphone jack.
- Use the tool or your fingernail to pry the opening open.

## Step 2



- If an microSD card is inserted, use the flat end of a spudger and push it until you hear a click sound and it will release right after.
- ☑ Once you reassemble the midframe, place the microSD card back into it's slot
- Do the exact same thing with your battery and do not damage the battery in any way.

This document was generated on 2019-10-04 11:16:44 PM (MST).



## Step 3



- Remove all six of the 4.0 mm Philips #00 screws securing the back of the device to the front

## Step 4



- Pry the midframe all around the device to carefully remove it
- ⚠ If you do not pry throughout the whole device, the midframe will be very hard to remove
- ☑ A plastic tool opener would be better and it will not damage the phone.

## Step 5



- Remove the midframe carefully
- ⓘ If your previous midframe was broken, place a new one. When you hear a click sound throughout the device, you know you have snapped it into place