



Samsung Galaxy S III Front Panel Assembly Replacement

Replace the Front Panel Assembly on your Samsung Galaxy S III.

Written By: Walter Galan



INTRODUCTION

Use this guide to replace the front panel assembly.

[video: <http://www.youtube.com/watch?v=NUf1rFxrZq4>]



TOOLS:

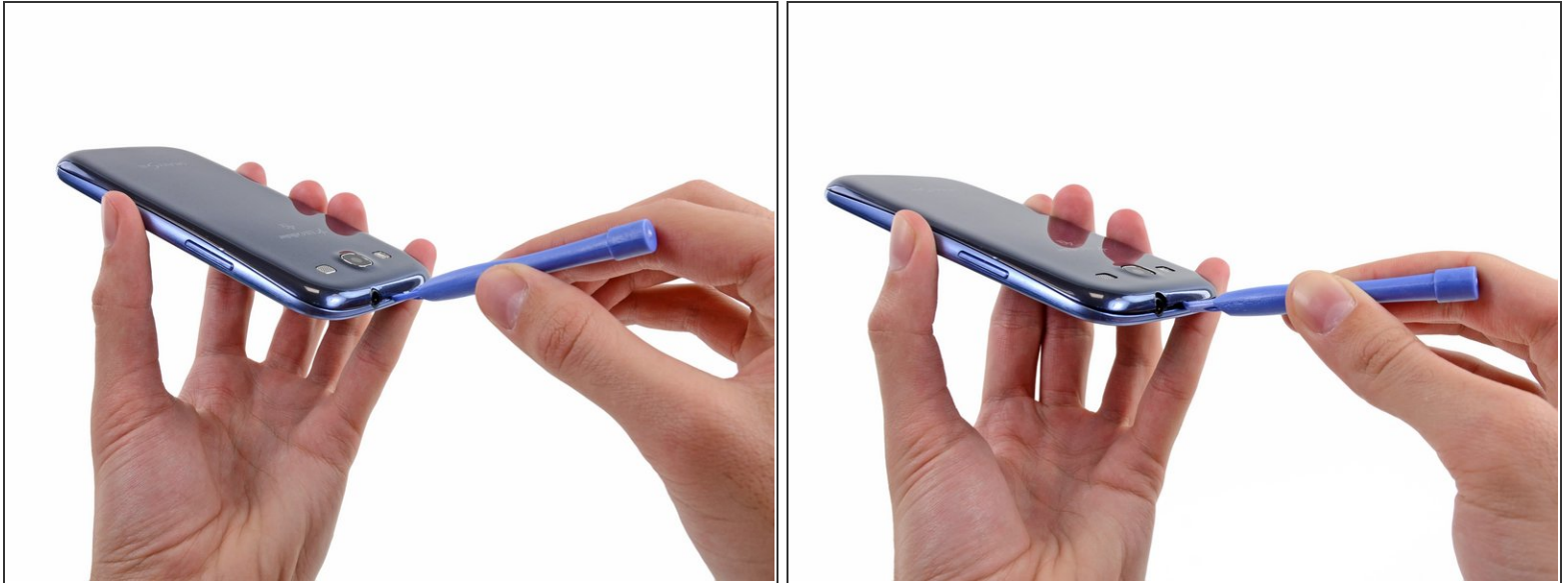
- [Phillips #00 Screwdriver](#) (1)
- [iFixit Opening Tools](#) (1)
- [Tweezers](#) (1)



PARTS:

- [Galaxy S III \(Sprint\) Screen](#) (1)
- [Galaxy S III \(Verizon\) Screen](#) (1)
- [Galaxy S III \(AT&T/T-Mobile\) Screen](#) (1)
- [Galaxy S III \(US Cellular\) Screen](#) (1)
- [Samsung Galaxy S III S3 Display Assembly \(LCD, Digitizer/Front Panel\)](#) (1)
International
- [Samsung Galaxy S III Display Assembly I9305 \(Digitizer/Front Panel\)](#) (1)
International LTE
- [Galaxy S III Screen and Digitizer \(Sprint\)](#) (1)
- [Samsung Galaxy S III S3 Wi-Fi Antenna](#) (1)
- [Samsung Galaxy S III S3 Vibrator](#) (1)
- [Samsung Galaxy S III S3 Power Button](#) (1)
- [Samsung Galaxy S III S3 Volume Button](#) (1)

Step 1 — Rear Case



- i** The following four steps can be accomplished without a plastic opening tool. However, it's recommended to use a tool to best avoid breaking any clips along the perimeter of the rear case.
- Insert a plastic opening tool or fingernail into the notch in the gap between the rear case and the rest of the phone, located at the top of the device.
 - Gently twist the opening tool to disconnect the clips securing the top of the rear case.

Step 2



- Slide the plastic opening tool left along the top edge and repeat the twisting motion to widen the gap between the rear case and the phone.

Step 3



- Continue to move the plastic opening tool around the perimeter of the top left corner, gently prying up along the rear case.

Step 4



- Pry along the top right side, and continue prying down the right side of the rear case.

Step 5




- Lift up and remove the rear case from the phone.

i You may need to peel the case up to separate it from any clips still holding it to the bottom of the phone.

Step 6 — Battery



 This step can be accomplished without the need of a plastic opening tool. Just use your finger if you want to.

- Wedge a plastic opening tool into the small notch above the battery.
- Pry the battery up out of its recess.

Step 7



- Remove the battery.

Step 8 — SIM Card



- Using your fingernail, push the SIM card slightly deeper into its slot, until you hear a click.
- After the click, release the card and it will pop out of its slot.

 For reassembly, push the SIM card into the slot until it clicks in place.

Step 9



- Use your thumb to slide enough of the SIM card out of its slot to grab ahold of it.
- Grasp and remove the SIM card away from the phone.

Step 10 — microSD Card



- Using your fingernail, push the microSD card slightly deeper into its slot, until you hear a click.
 - After the click, release the card and it will pop out of its slot.
- ✦ For reassembly, push the microSD card into the slot until it clicks in place.

Step 11



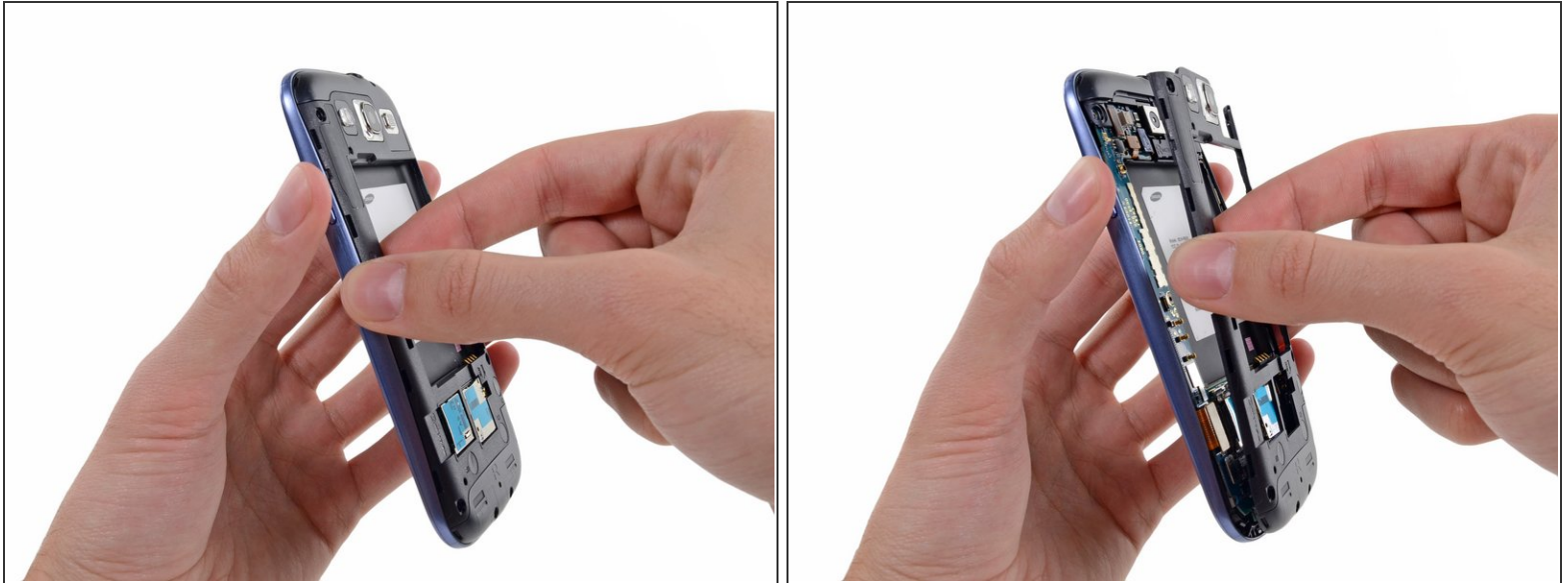
- Use your thumb to slide the microSD card out of the slot.
- Remove the microSD card from the phone.

Step 12 — Plastic Midframe



- Remove the ten 4.0 mm Phillips screws securing the midframe to the front panel assembly.

Step 13



- Grasp the left side of the plastic midframe with your thumb and forefinger and lift it away from the phone.
- ⓘ The midframe lightly snaps in place, and can be removed with very little force.

Step 14 — Headphone Jack/Speaker Assembly



- Use a plastic opening tool to pry the rear-facing camera connector up from its socket on the motherboard.

⚠ Make sure you are prying on the connector and not the socket, or you may damage the motherboard.

Step 15



- Insert a plastic opening tool outboard of the speaker portion of the headphone jack/speaker assembly.
- Gently pry the headphone jack/speaker assembly up from the front assembly.

Step 16



- Lift the headphone jack/speaker assembly out of the Galaxy S III.

Step 17 — Motherboard Assembly



- Use a plastic opening tool to pry the front-facing camera connector from its socket on the motherboard.

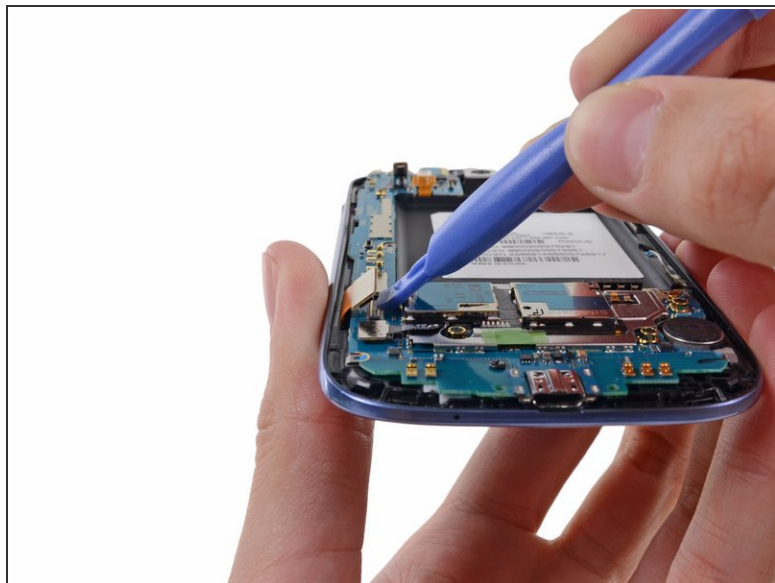
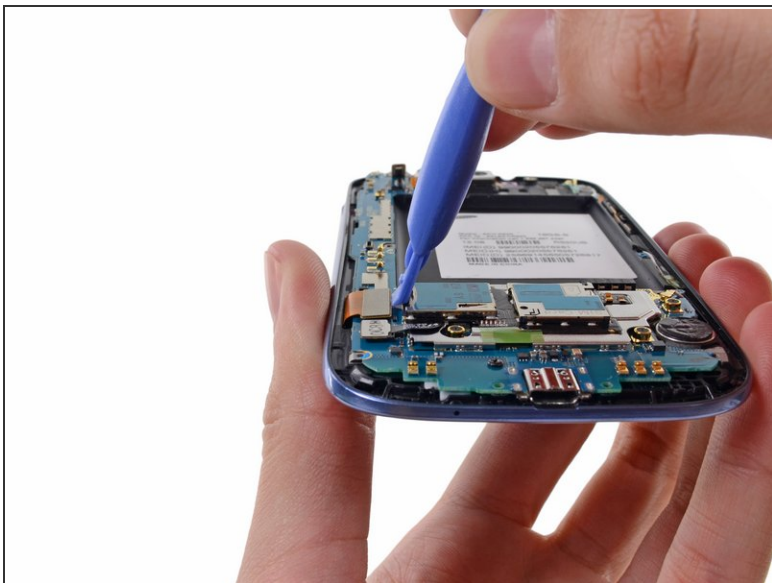
⚠ Do not try to remove the front-facing camera just yet. Its cable is still routed beneath the motherboard assembly to the ambient light sensor.

Step 18



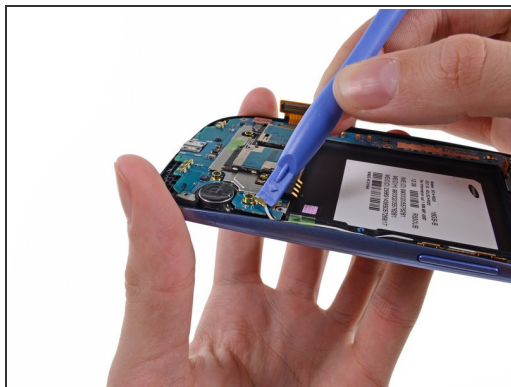
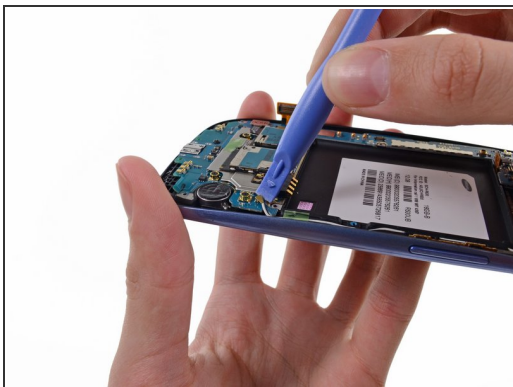
- Disconnect the digitizer cable by gently prying its connector up from its socket on the motherboard.

Step 19



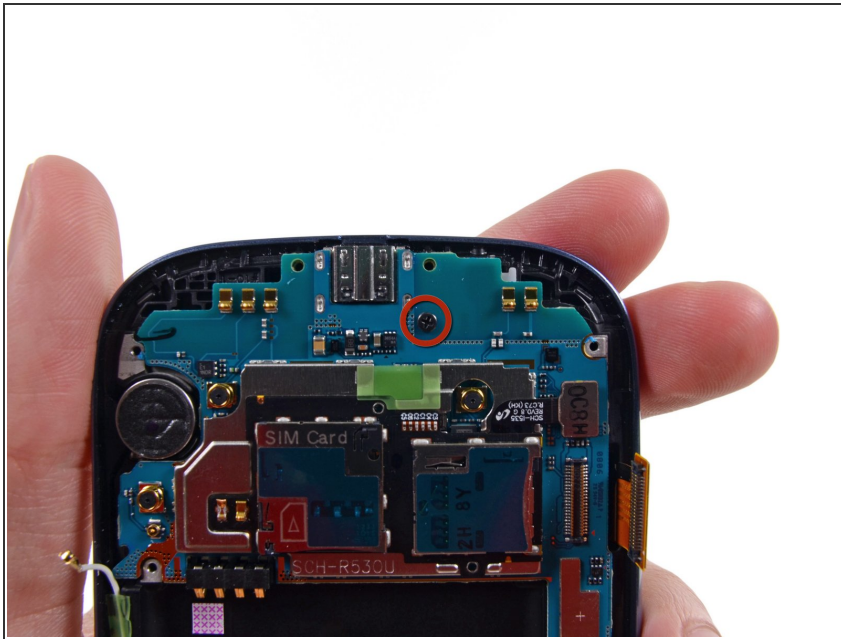
- Disconnect the display data cable from the motherboard.

Step 20



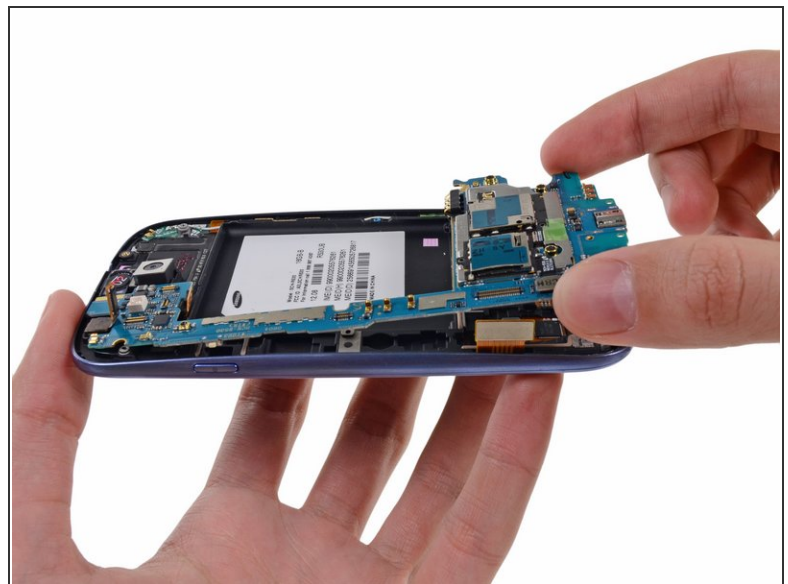
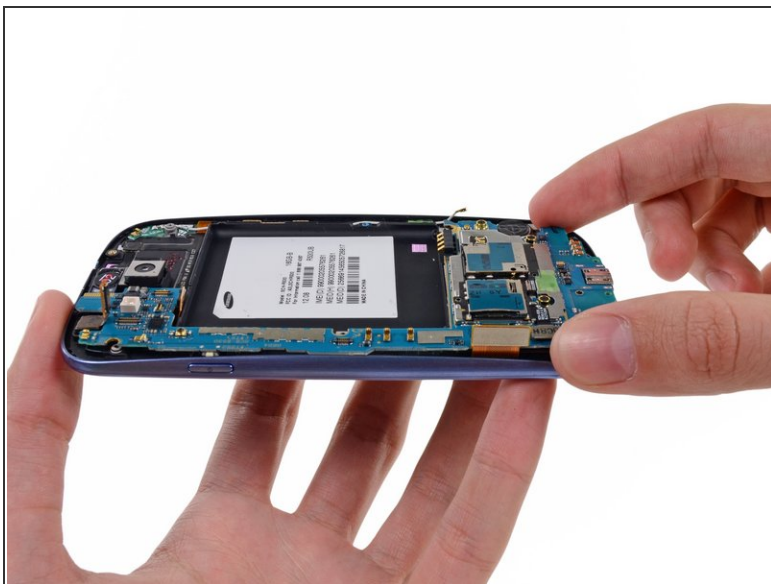
- Pry the Wi-Fi antenna cable connector up from its socket on the motherboard.
- Gently move the cable out of the way of the motherboard.

Step 21



- Remove the single 3.0 mm Phillips screw securing the motherboard to the front panel assembly.

Step 22



- Carefully lift the bottom of the motherboard assembly away from the front panel assembly.
- Remove the motherboard assembly from the front panel assembly, minding any cables that may snag on it.

Step 23 — Front-Facing Camera



- Remove the single 2.0 mm Phillips screw securing the front-facing camera bracket to the front panel.

Step 24



- Use a pair of tweezers to lift the front-facing camera/ambient light sensor/rear microphone assembly out from its socket in the front panel assembly.

Step 25 — Front Panel Assembly



- Peel the antenna cable up from its channel in the front panel assembly.

⚠ Do **not** completely remove the antenna cable, it is still connected to the antenna board.

Step 26



- Wedge the tip of a spudger underneath the earpiece speaker and pry the earpiece speaker out of its recess in the front panel assembly.

Step 27



- Use the flat edge of a spudger to peel the top portion of the earpiece/volume buttons/ambient light sensor ribbon cable from the front panel assembly.

Step 28



- Carefully wedge the flat edge of a spudger underneath the ambient light sensor.
- Continue peeling the earpiece/volume buttons/ambient light sensor ribbon cable up off the front panel assembly.

Step 29



- Insert the flat edge of a spudger underneath the earpiece/volume buttons/ambient light sensor ribbon cable connector.
- Gently run the spudger across to continue peeling the the earpiece/volume buttons/ambient light sensor ribbon cable from the front panel assembly.

Step 30



- Insert a plastic opening tool in between the the buttons ribbon cable and the volume button.
- Push the volume out of its recess in the front panel assembly.
- Lift and remove the volume button out of the phone.

Step 31



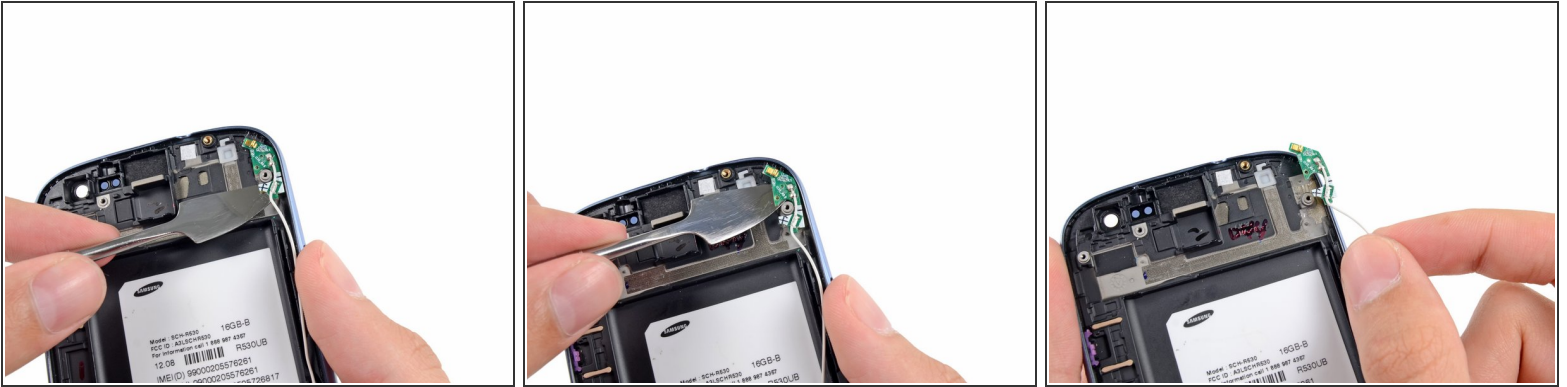
- Wedge the flat edge of a plastic opening tool in between the the earpiece/buttons/ambient light sensor ribbon cable and run it down to loosen the adhesive securing the ribbon cable.

Step 32



- Grasp and remove the earpiece/buttons/ambient light sensor ribbon cable out of the phone.

Step 33



- Use a metal spudger to carefully peel the antenna board off the front panel assembly.
- Lift and remove the antenna board out of the phone.

Step 34



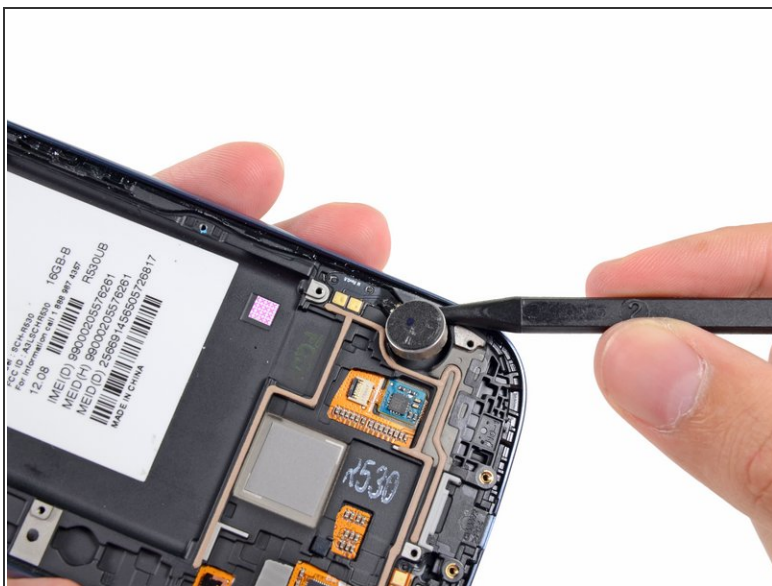
- Push the power button out of its recess in the front panel assembly.
- Remove the power button from the front panel assembly.

Step 35



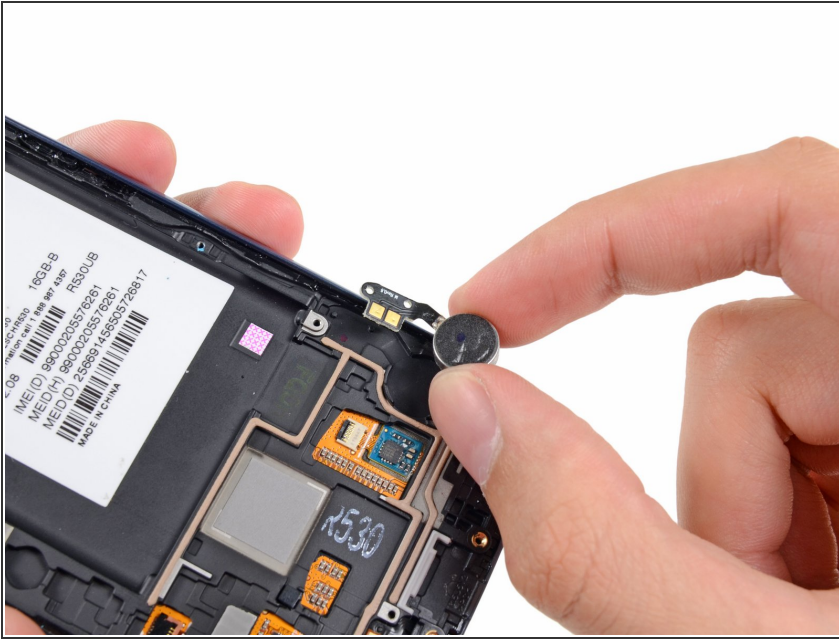
- Use the tip of a spudger to pry the vibrator out of its recess in the front panel assembly.

Step 36



- Use the tip of a spudger to peel the vibrator assembly off the front panel assembly.

Step 37



- Lift and remove the vibrator out of the front panel assembly.

Step 38



- Front panel assembly remains.
- ★ If you are replacing the front panel assembly with a new one, don't forget to transfer all the parts you removed to your new front panel assembly.

To reassemble your device, follow these instructions in reverse order.