



# Samsung Galaxy S III Front-Facing Camera Replacement

Replace the Front-Facing Camera in your Samsung Galaxy S III.

Written By: Walter Galan



# INTRODUCTION

Use this guide to replace the front-facing camera.



## TOOLS:

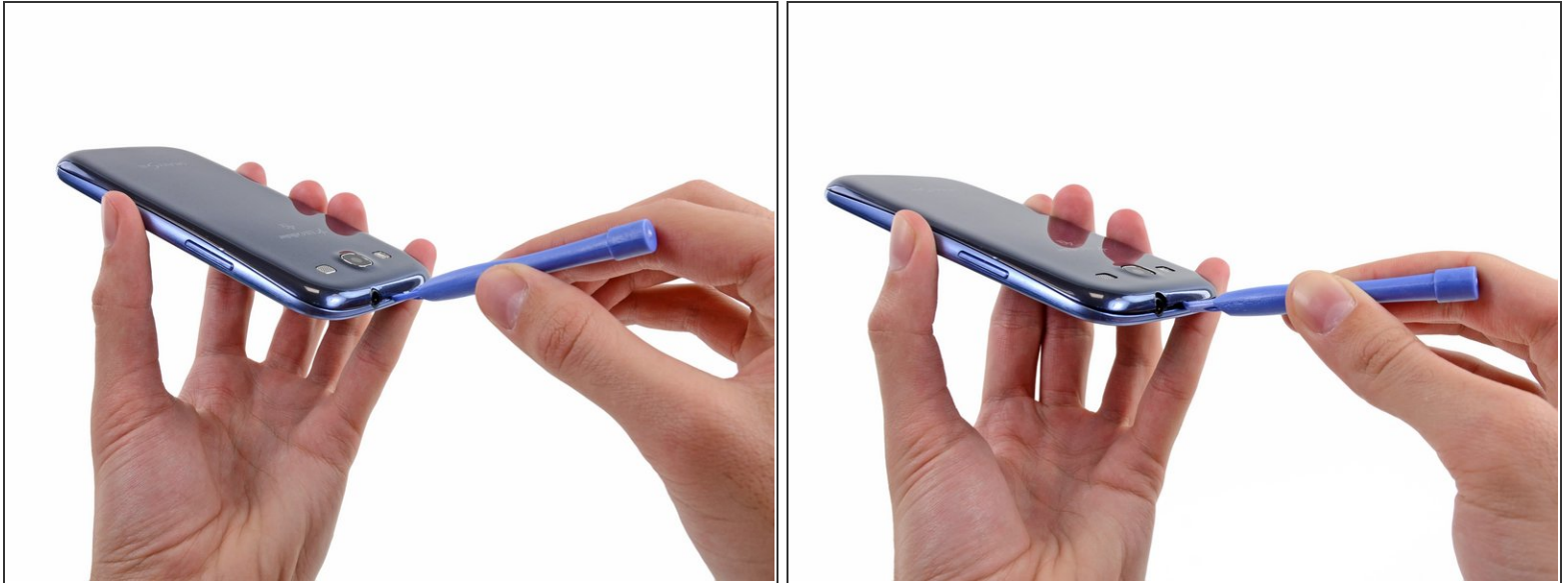
- [Phillips #00 Screwdriver](#) (1)
- [iFixit Opening Tools](#) (1)
- [Tweezers](#) (1)



## PARTS:

- [Galaxy S III Front Camera](#) (1)

## Step 1 — Rear Case



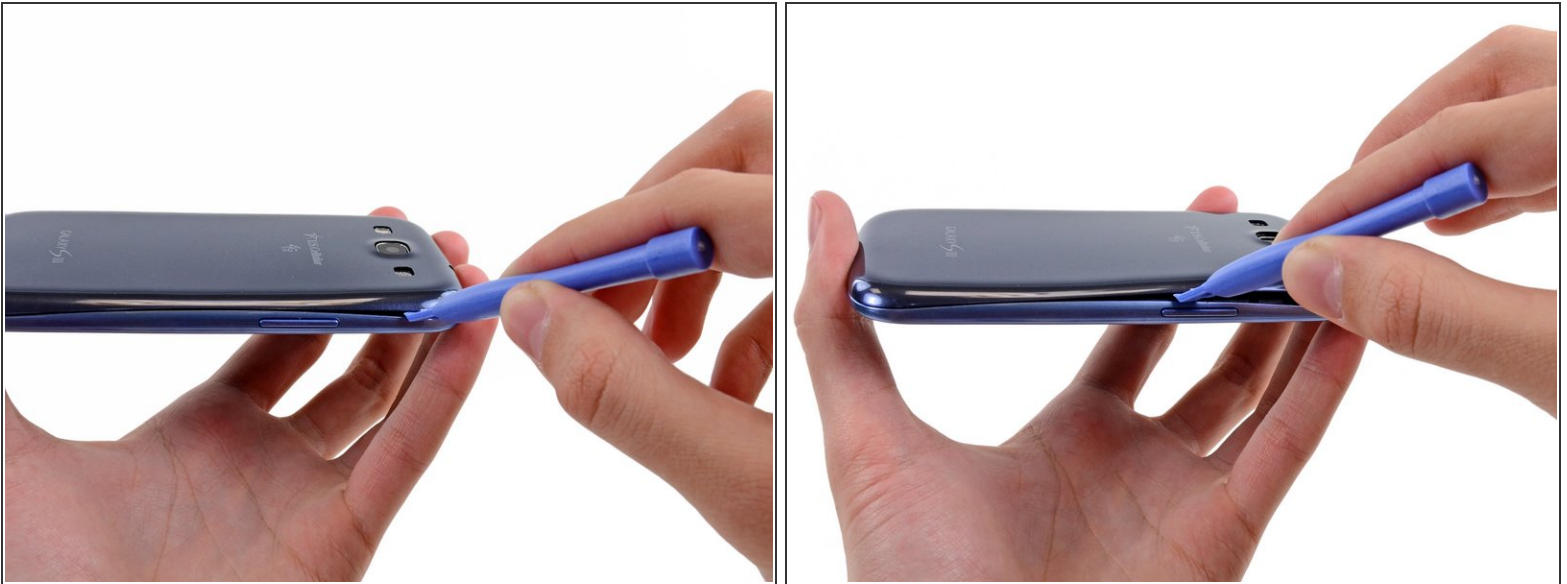
- i** The following four steps can be accomplished without a plastic opening tool. However, it's recommended to use a tool to best avoid breaking any clips along the perimeter of the rear case.
- Insert a plastic opening tool or fingernail into the notch in the gap between the rear case and the rest of the phone, located at the top of the device.
  - Gently twist the opening tool to disconnect the clips securing the top of the rear case.

## Step 2



- Slide the plastic opening tool left along the top edge and repeat the twisting motion to widen the gap between the rear case and the phone.

## Step 3



- Continue to move the plastic opening tool around the perimeter of the top left corner, gently prying up along the rear case.



## Step 4



- Pry along the top right side, and continue prying down the right side of the rear case.

## Step 5




- Lift up and remove the rear case from the phone.

**i** You may need to peel the case up to separate it from any clips still holding it to the bottom of the phone.

## Step 6 — Battery



 This step can be accomplished without the need of a plastic opening tool. Just use your finger if you want to.

- Wedge a plastic opening tool into the small notch above the battery.
- Pry the battery up out of its recess.

## Step 7



- Remove the battery.

## Step 8 — SIM Card



- Using your fingernail, push the SIM card slightly deeper into its slot, until you hear a click.
  - After the click, release the card and it will pop out of its slot.
- ☒ For reassembly, push the SIM card into the slot until it clicks in place.



## Step 9



- Use your thumb to slide enough of the SIM card out of its slot to grab ahold of it.
- Grasp and remove the SIM card away from the phone.

## Step 10 — microSD Card



- Using your fingernail, push the microSD card slightly deeper into its slot, until you hear a click.
  - After the click, release the card and it will pop out of its slot.
- ✦ For reassembly, push the microSD card into the slot until it clicks in place.



## Step 11



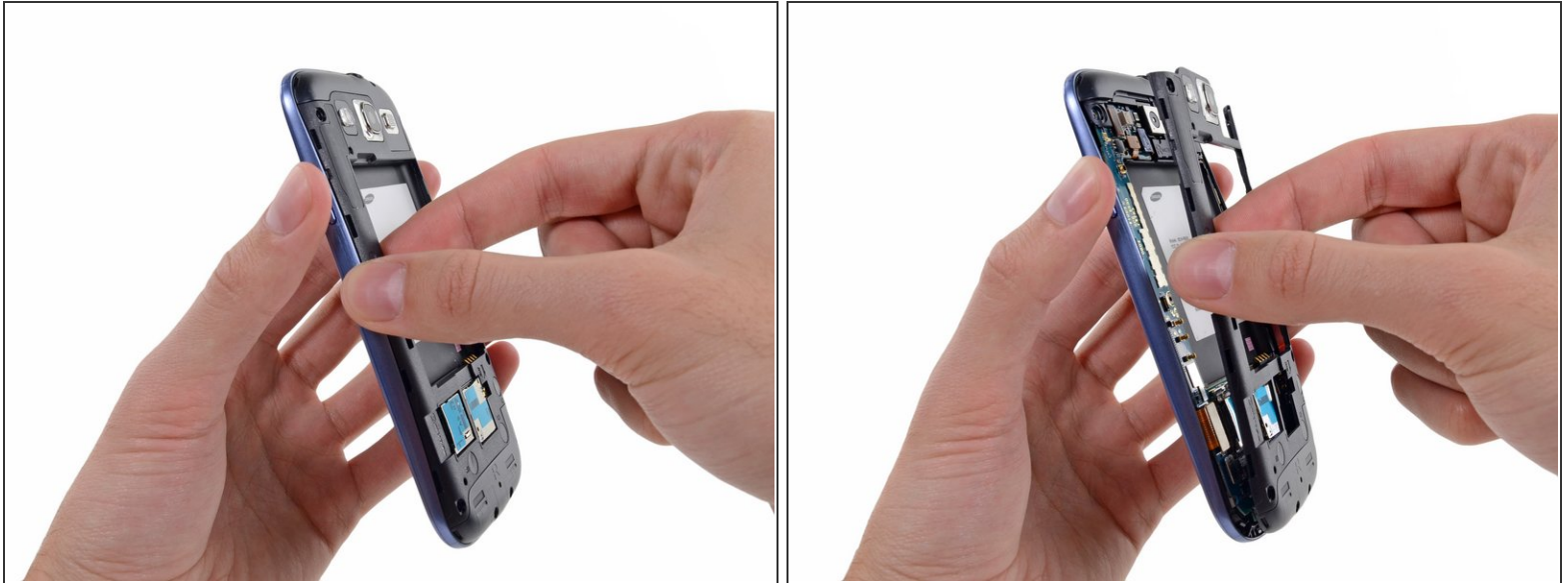
- Use your thumb to slide the microSD card out of the slot.
- Remove the microSD card from the phone.

## Step 12 — Plastic Midframe



- Remove the ten 4.0 mm Phillips screws securing the midframe to the front panel assembly.

## Step 13



- Grasp the left side of the plastic midframe with your thumb and forefinger and lift it away from the phone.
- ⓘ The midframe lightly snaps in place, and can be removed with very little force.

## Step 14 — Headphone Jack/Speaker Assembly



- Use a plastic opening tool to pry the rear-facing camera connector up from its socket on the motherboard.

⚠ Make sure you are prying on the connector and not the socket, or you may damage the motherboard.

## Step 15



- Insert a plastic opening tool outboard of the speaker portion of the headphone jack/speaker assembly.
- Gently pry the headphone jack/speaker assembly up from the front assembly.

## Step 16



- Lift the headphone jack/speaker assembly out of the Galaxy S III.



## Step 17 — Motherboard Assembly



- Use a plastic opening tool to pry the front-facing camera connector from its socket on the motherboard.

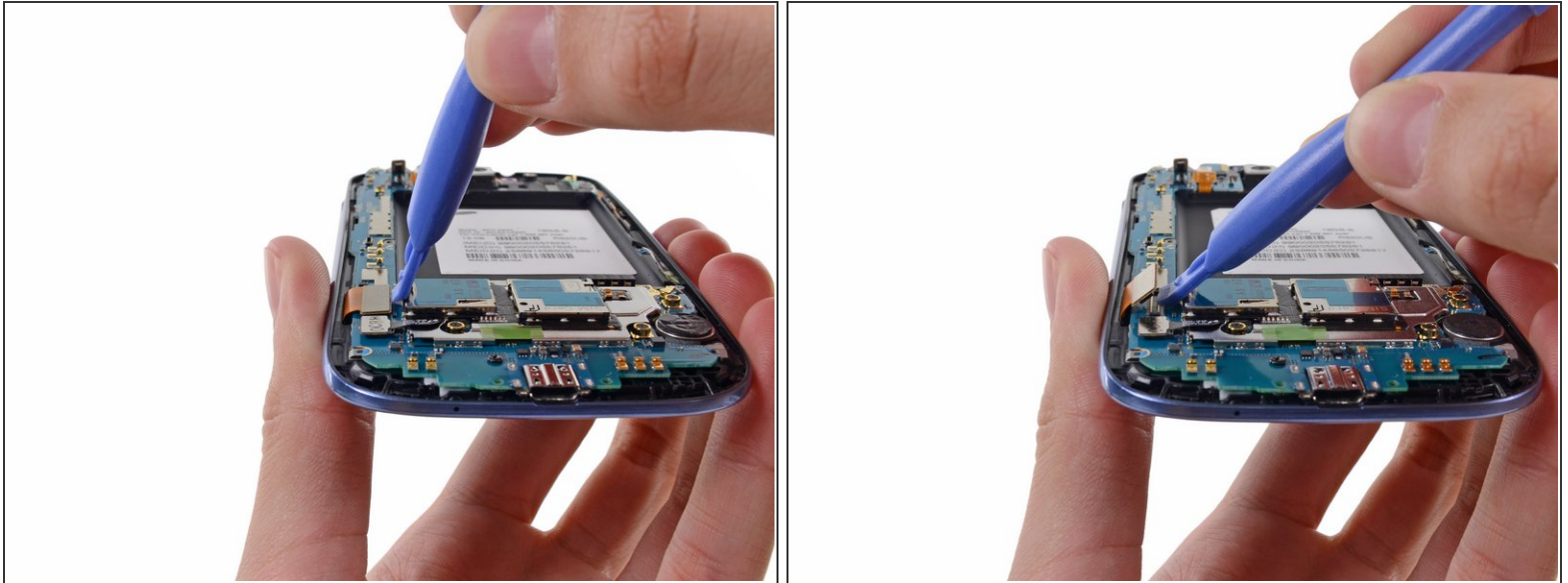
⚠ Do not try to remove the front-facing camera just yet. Its cable is still routed beneath the motherboard assembly to the ambient light sensor.

## Step 18



- Disconnect the digitizer cable by gently prying its connector up from its socket on the motherboard.

## Step 19



- Disconnect the display data cable from the motherboard.

## Step 20



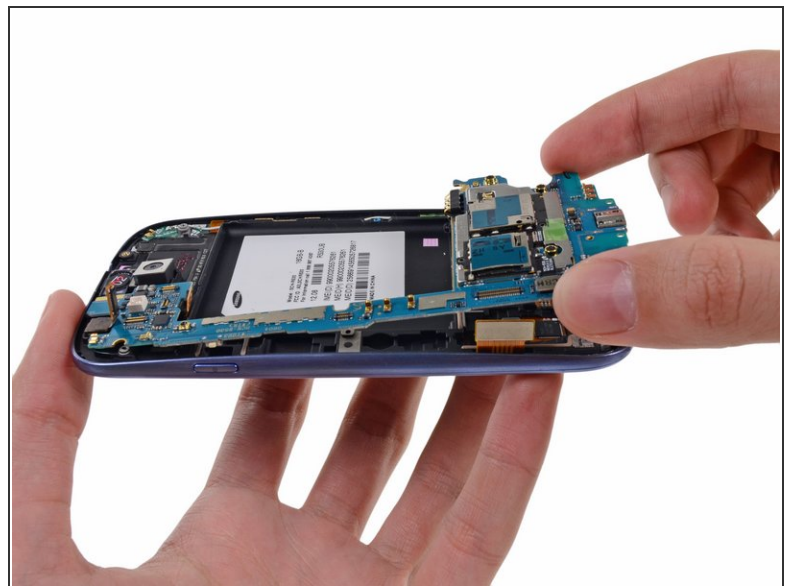
- Pry the Wi-Fi antenna cable connector up from its socket on the motherboard.
- Gently move the cable out of the way of the motherboard.

## Step 21



- Remove the single 3.0 mm Phillips screw securing the motherboard to the front panel assembly.

## Step 22



- Carefully lift the bottom of the motherboard assembly away from the front panel assembly.
- Remove the motherboard assembly from the front panel assembly, minding any cables that may snag on it.



## Step 23 — Front-Facing Camera



- Remove the single 2.0 mm Phillips screw securing the front-facing camera bracket to the front panel.

## Step 24



- Use a pair of tweezers to lift the front-facing camera/ambient light sensor/rear microphone assembly out from its socket in the front panel assembly.

To reassemble your device, follow these instructions in reverse order.

This document was generated on 2019-09-19 10:01:28 PM (MST).



