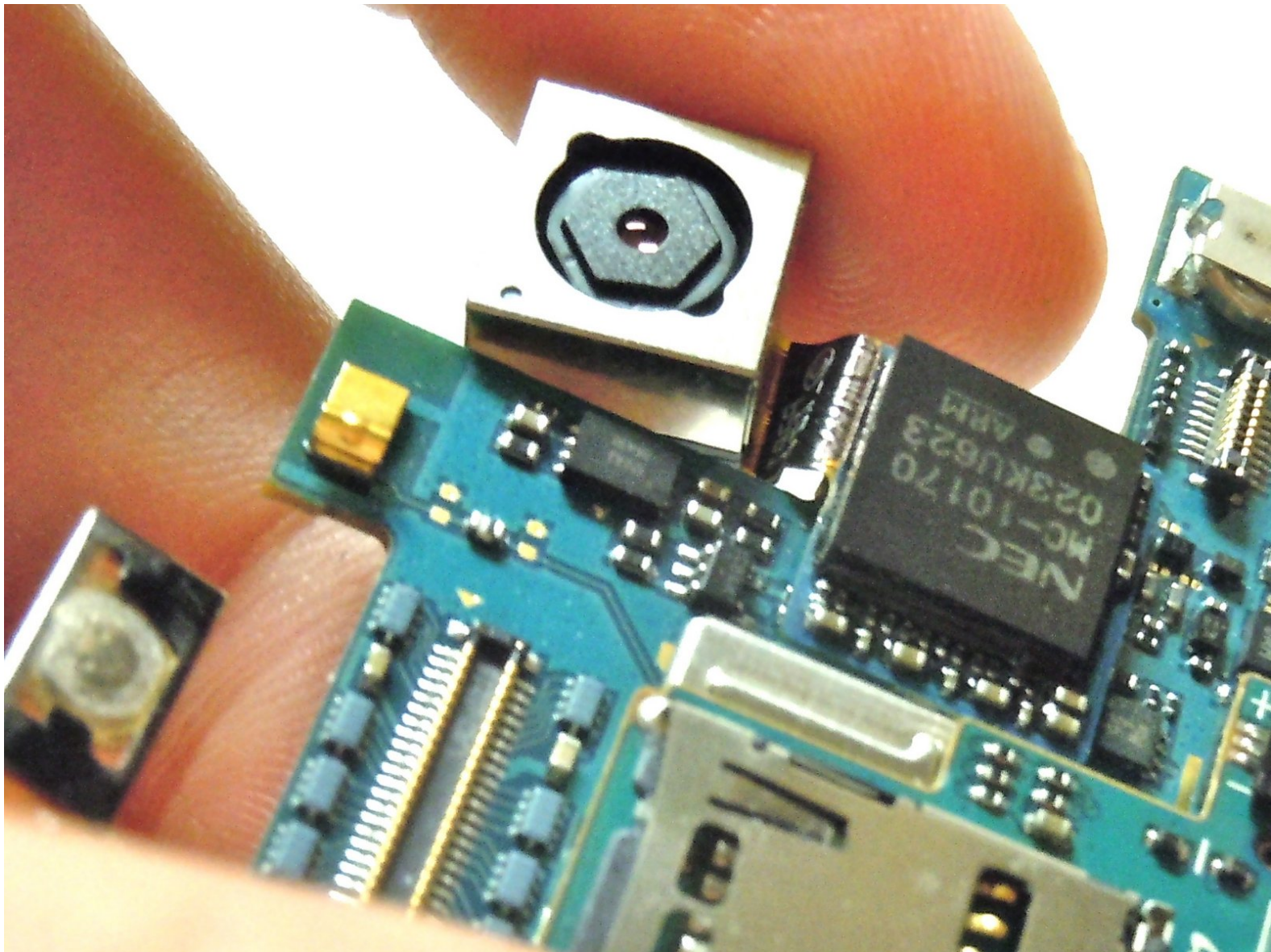




# Samsung Galaxy S Vibrant Camera Lens Replacement

A brief guide on how to replace your Samsung Galaxy S Vibrant's camera lens.

Written By: Taylor Catlin



## INTRODUCTION

If your camera stops working or there are constant smudges or discoloration spots in your pictures, your camera lens may be broken or malfunctioning. Replace it by following these steps.



### TOOLS:

- [Tweezers](#) (1)
- [Phillips #00 Screwdriver](#) (1)
- [iFixit Opening Tools](#) (1)



### PARTS:

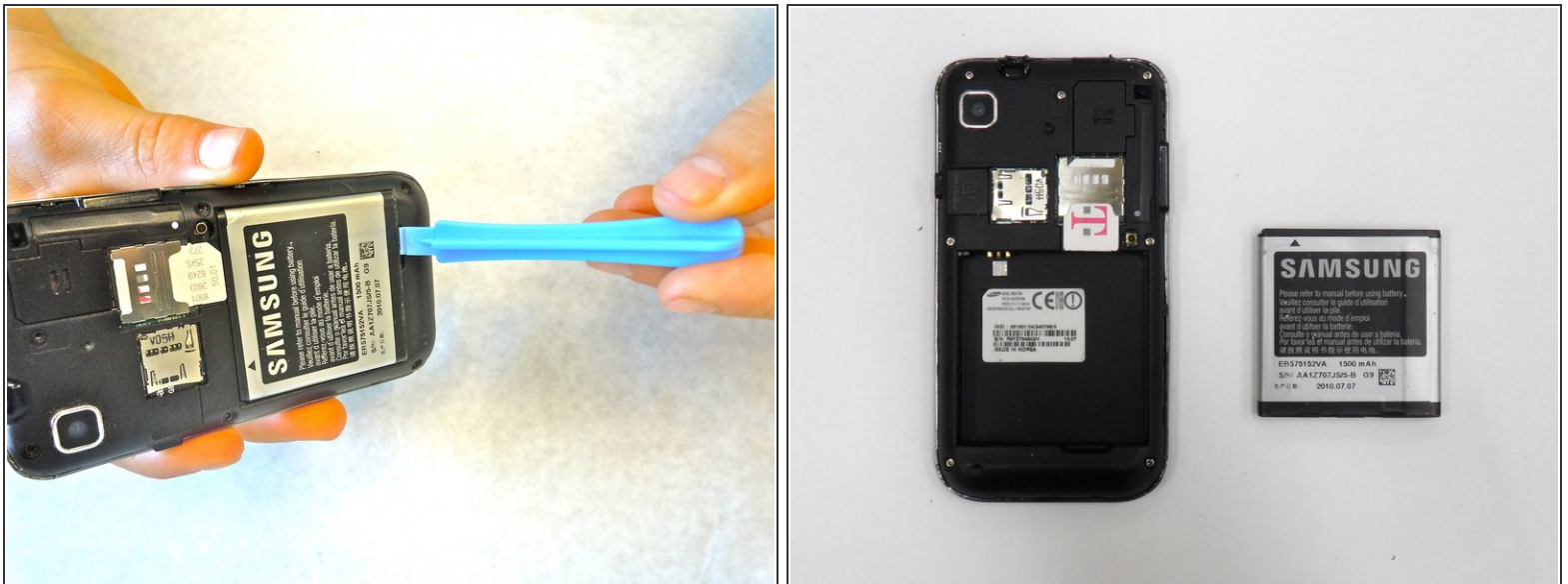
- [Samsung Vibrant T959 Camera Lens](#) (1)

## Step 1 — Battery



- Locate the small slit on the bottom edge of the device between the back and front cases.
- Pop the back case off by inserting your finger and pulling the case away from the phone.
  - ❗ If necessary (it shouldn't be), use the [Plastic Opening Tools](#) to pry the back case off.

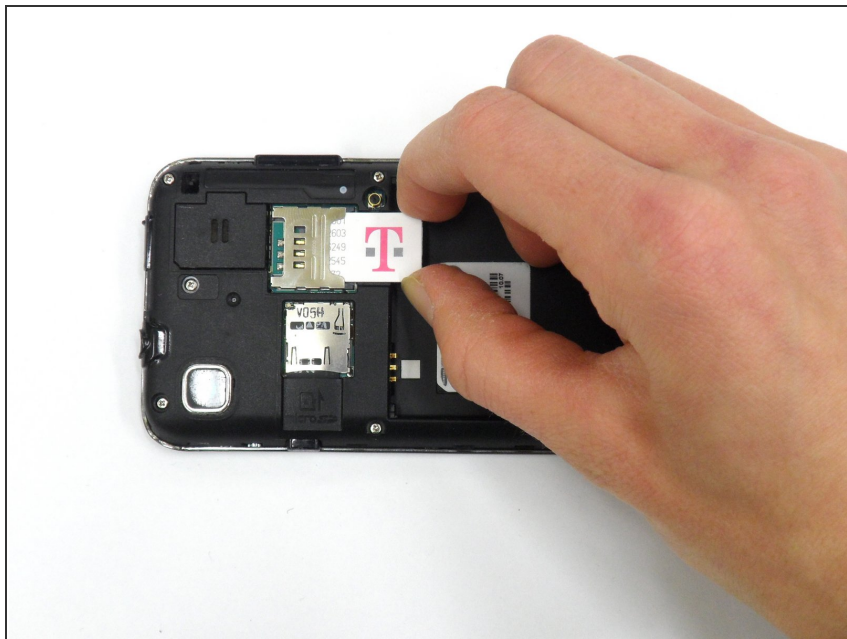
## Step 2



- Remove the battery by pushing the bottom edge of the battery up and away from the phone
  - ❗ If you would prefer, you may use the [Plastic Opening Tools](#) for this step as well.



### Step 3 — Midframe



- Remove SIM card by pushing down and away from the slot, then pulling it out toward the bottom edge of the phone.

### Step 4



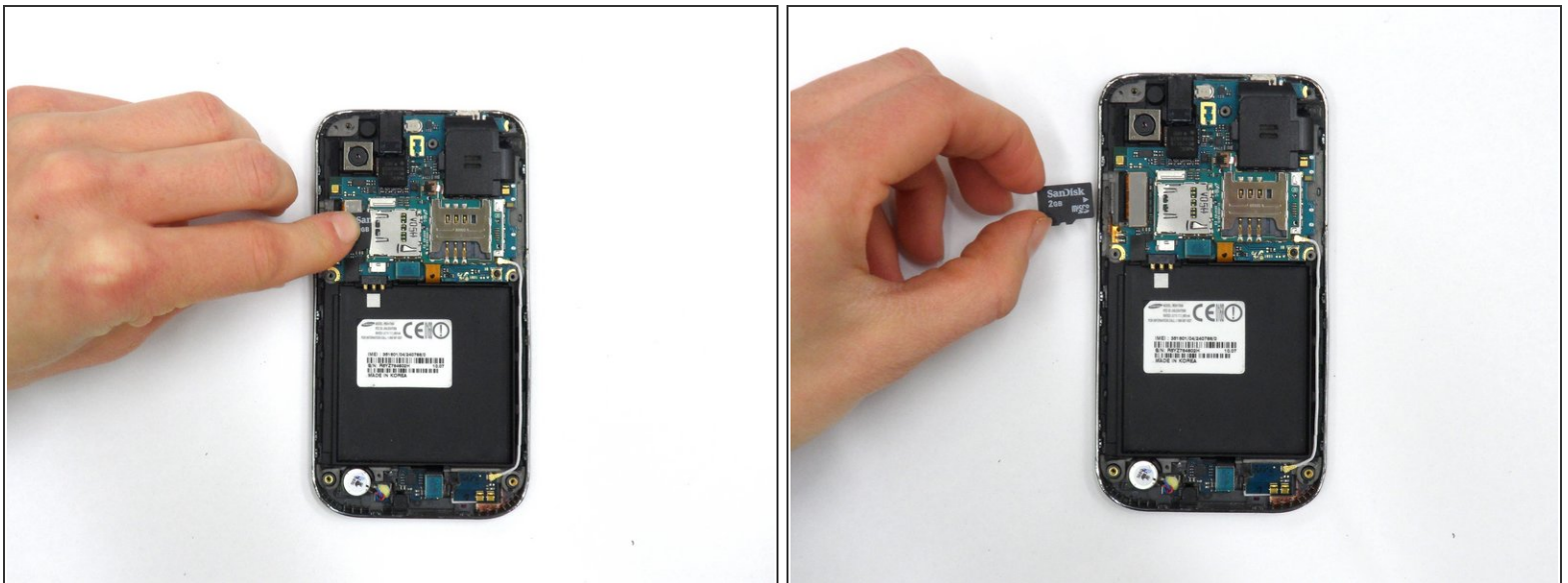
- Remove the seven 4.5 mm Phillips #00 screws along the perimeter of the phone.

## Step 5



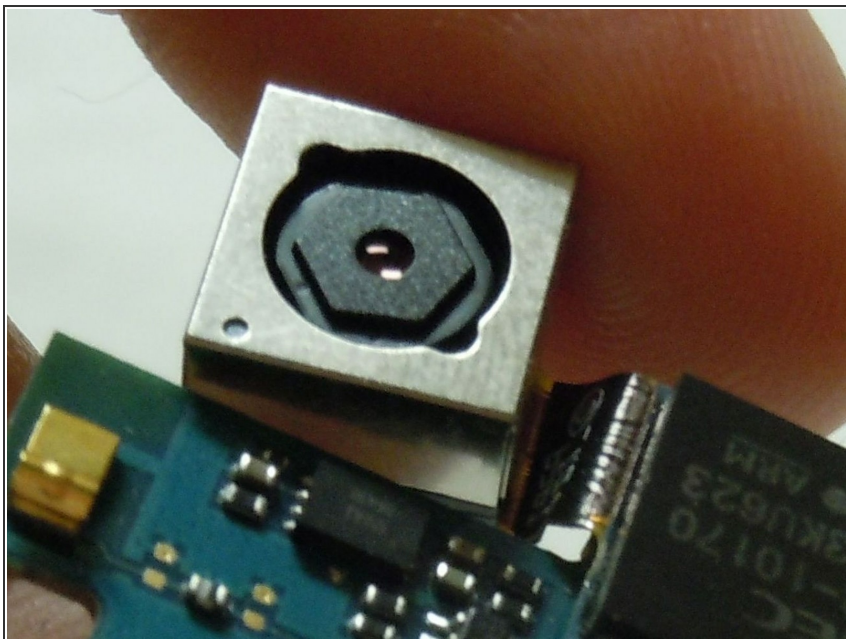
- Starting near the power button, use a plastic opening tool to disengage the plastic clips securing the midframe.
  - ⚠ Work carefully, and disengage all of the clips before removing the midframe.
- ⓘ The power button and the volume control button on the sides of the phone will fall out when the midframe is removed.

## Step 6



- Slide the SD card out of its slot.

## Step 7 — Camera Lens



- Disconnect the ribbon cable and camera lens by tugging gently at the base of the ribbon cable either by pinching with fingers or with the [Tweezers](#).
- ⓘ Only use the pinching method when the camera lens is already broken so as to avoid damage.

To reassemble your device, follow these instructions in reverse order.