



Samsung Galaxy S10 Top Midframe Removal

Prerequisite guide only. Removes the top midframe for the Galaxy S10.

Written By: Arthur Shi



INTRODUCTION

Prerequisite guide only! Removes the top midframe, which includes the charging coil and NFC antenna, for the Samsung Galaxy S10.



TOOLS:

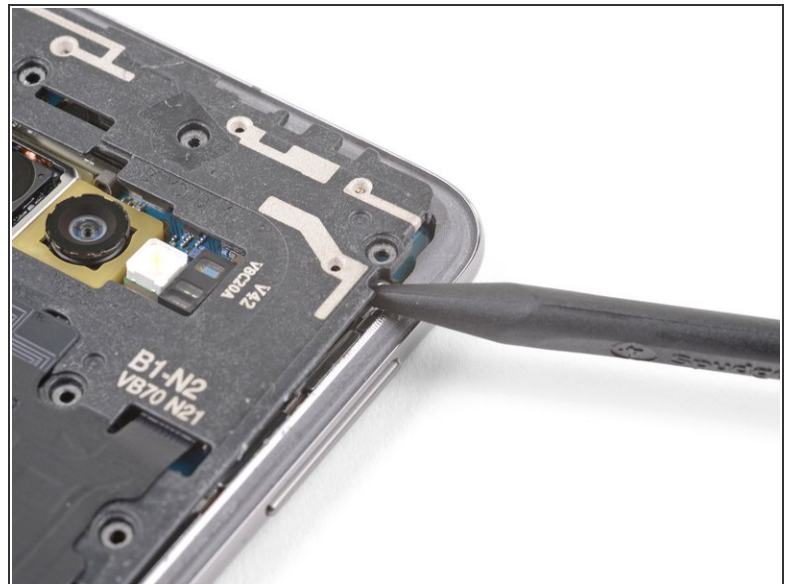
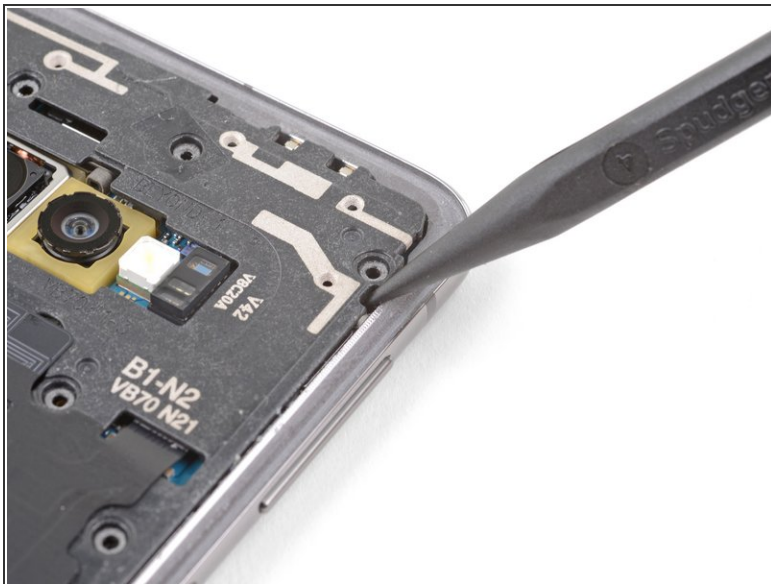
- [Phillips #00 Screwdriver](#) (1)
 - [iFixit Opening Picks set of 6](#) (1)
 - [Spudger](#) (1)
-

Step 1 — Samsung Galaxy S10 Top Midframe Removal



- Remove the eight 4 mm Phillips screws securing the top midframe to the phone.

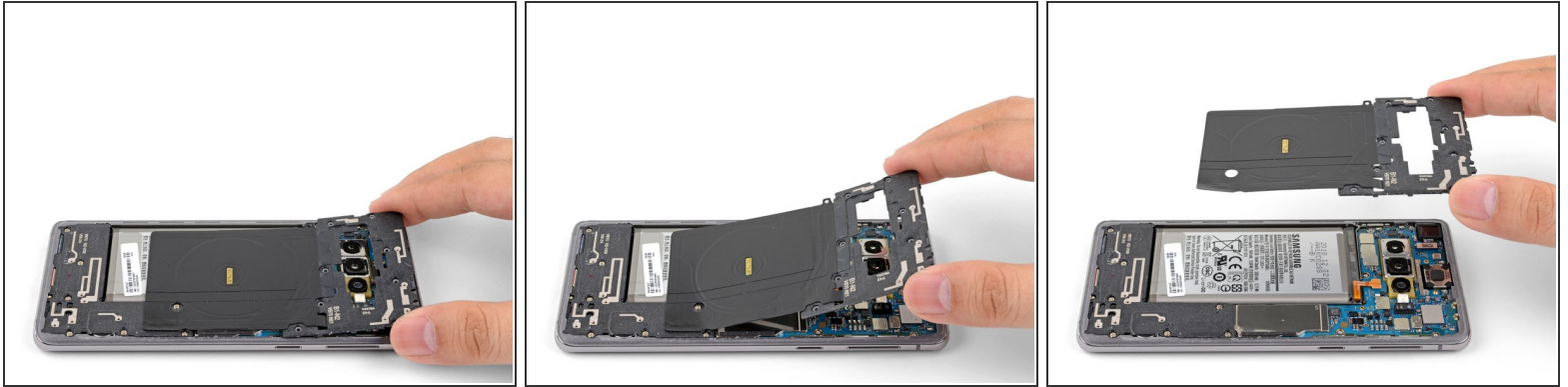
Step 2



- The midframe is still held in place by a few plastic clips around the edge.
- Insert the point of a spudger into the notch on the right edge of the midframe, near the volume up button.
- Pry up to loosen the midframe from the phone.

This document was generated on 2019-10-28 03:42:11 PM (MST).

Step 3



- Lift the midframe from the top corners and remove it from the phone.
- ❗ The top midframe may stick to the lower midframe at its bottom right corner. If that happens, slowly peel it off.
- To reinstall the top midframe:
 - [Align the midframe's top edge to the phone](#) and lay the frame down on the phone.
 - [Use fingers to apply pressure along the midframe perimeter](#) to snap the midframe clips back into place. The edges should sit flush against the phone edge.

To reassemble your device, follow these instructions in reverse order.