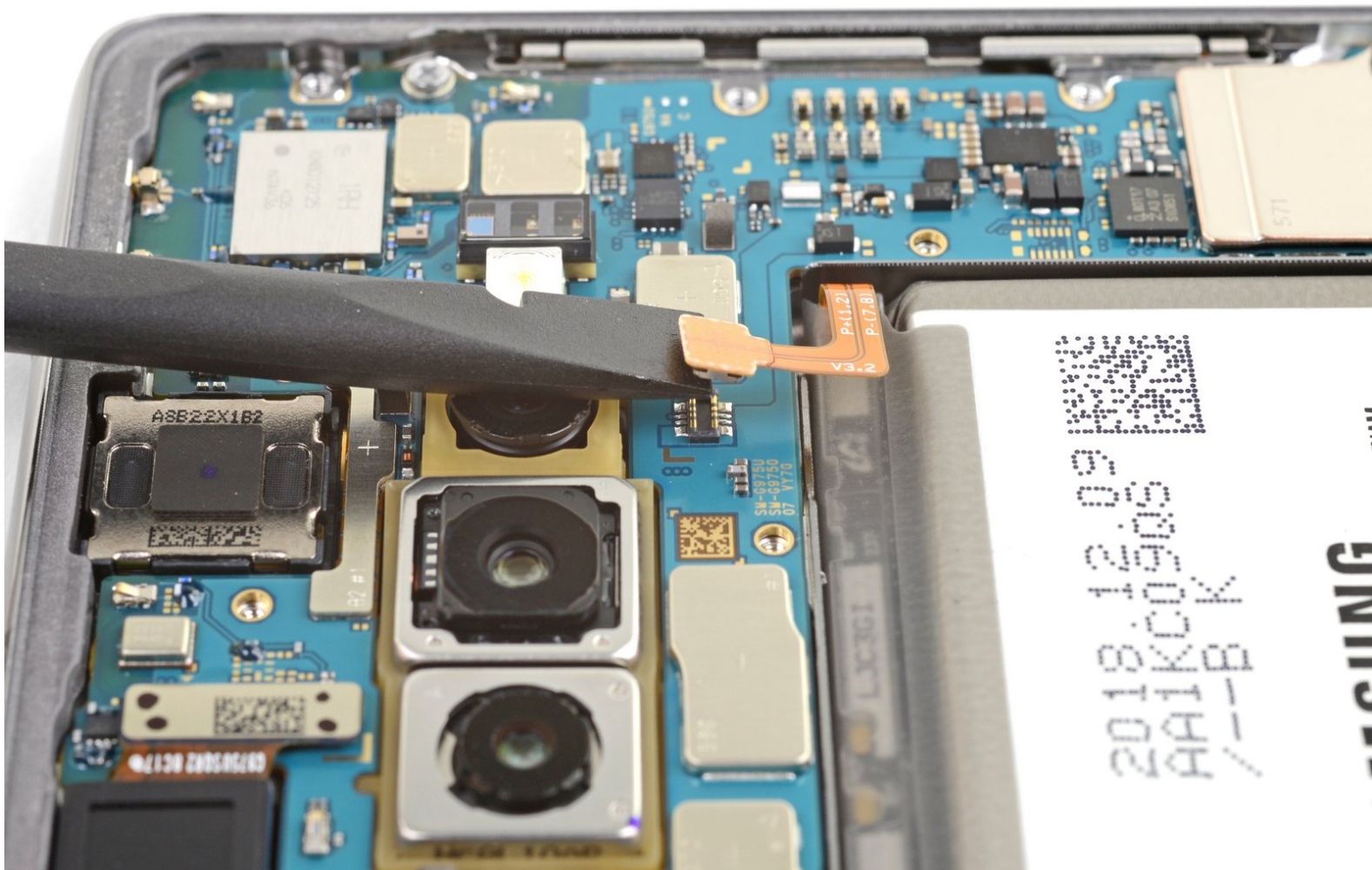




# Samsung Galaxy S10+ Battery Disconnect

Prereq only! Battery disconnect step for the Samsung Galaxy S10+.

Written By: Arthur Shi



---

## INTRODUCTION

Prerequisite step only! Used in conjunction with other guides.

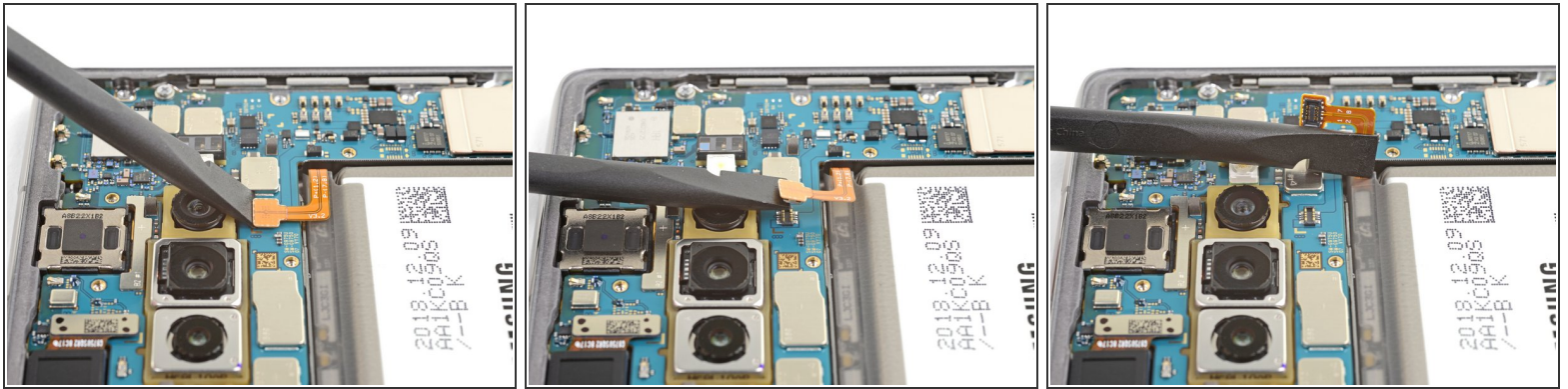
Disconnects the battery for the Samsung Galaxy S10+.



### TOOLS:

- [Spudger](#) (1)
-

## Step 1 — Samsung Galaxy S10+ Battery Disconnect



- Insert the flat end of a spudger underneath the battery connector, which is attached to the motherboard below the rear-facing camera.
- Pry upwards to disconnect the connector from its socket.
  - ⚠ When you disconnect connectors like these, be careful not to dislodge the small surface-mounted components surrounding the socket.
- Gently push the battery's flex cable away from the motherboard socket to prevent accidental contact.

To reassemble your device, follow these instructions in reverse order.