



# Samsung Galaxy S10+ Top Midframe Removal

Prereq guide only! Remove the top midframe, which includes the charging coil, for the Samsung Galaxy S10+.

Written By: Arthur Shi



---

## INTRODUCTION

Prereq guide only! Removes the top midframe, which includes the charging coil, for the Samsung Galaxy S10+.

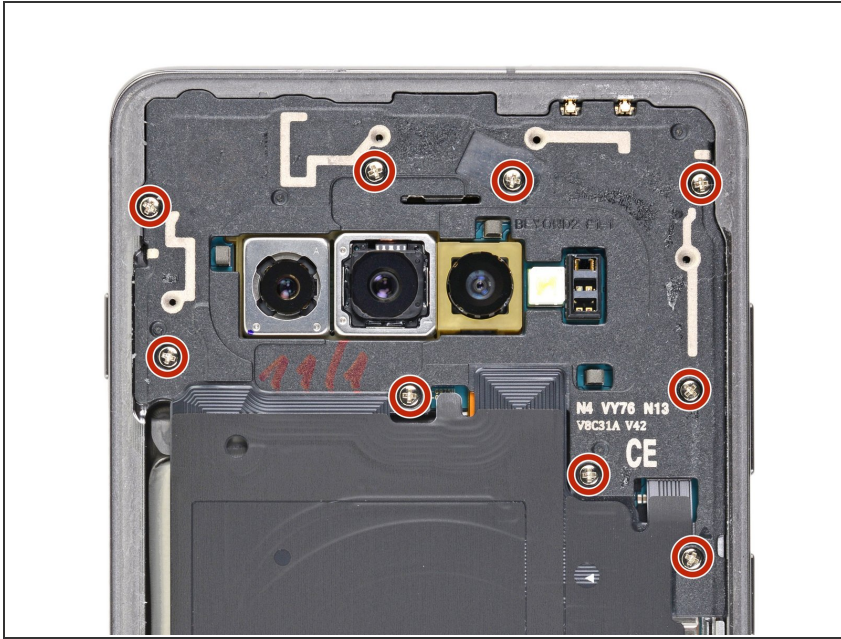
---



### TOOLS:

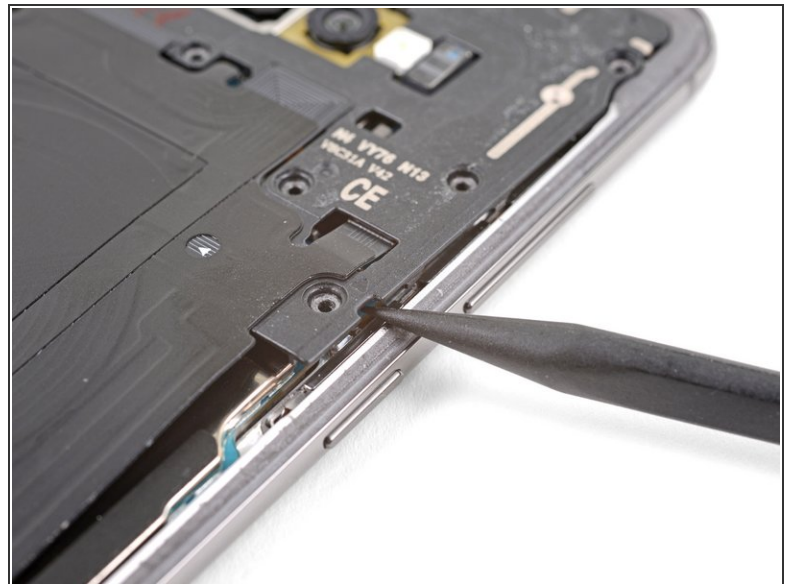
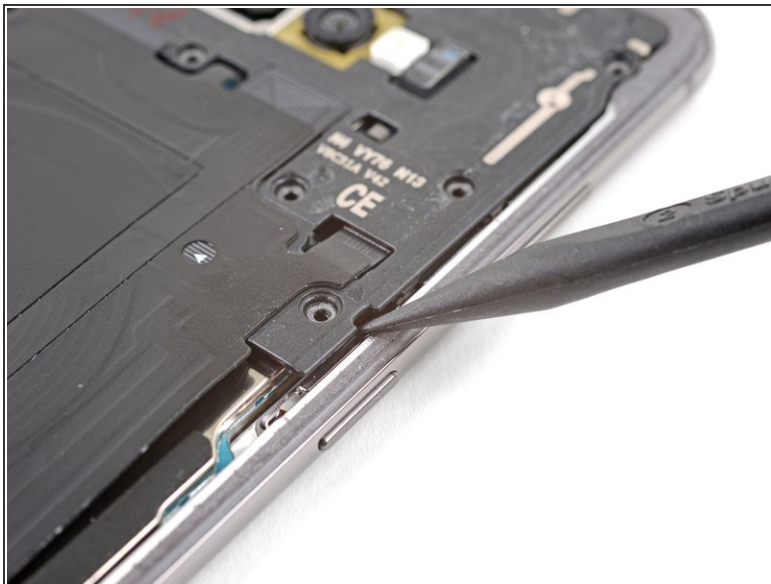
- [Phillips #00 Screwdriver](#) (1)
  - [iFixit Opening Picks set of 6](#) (1)
-

## Step 1 — Samsung Galaxy S10+ Top Midframe Removal



- Remove the nine 4 mm Phillips screws securing the top midframe to the phone.

## Step 2

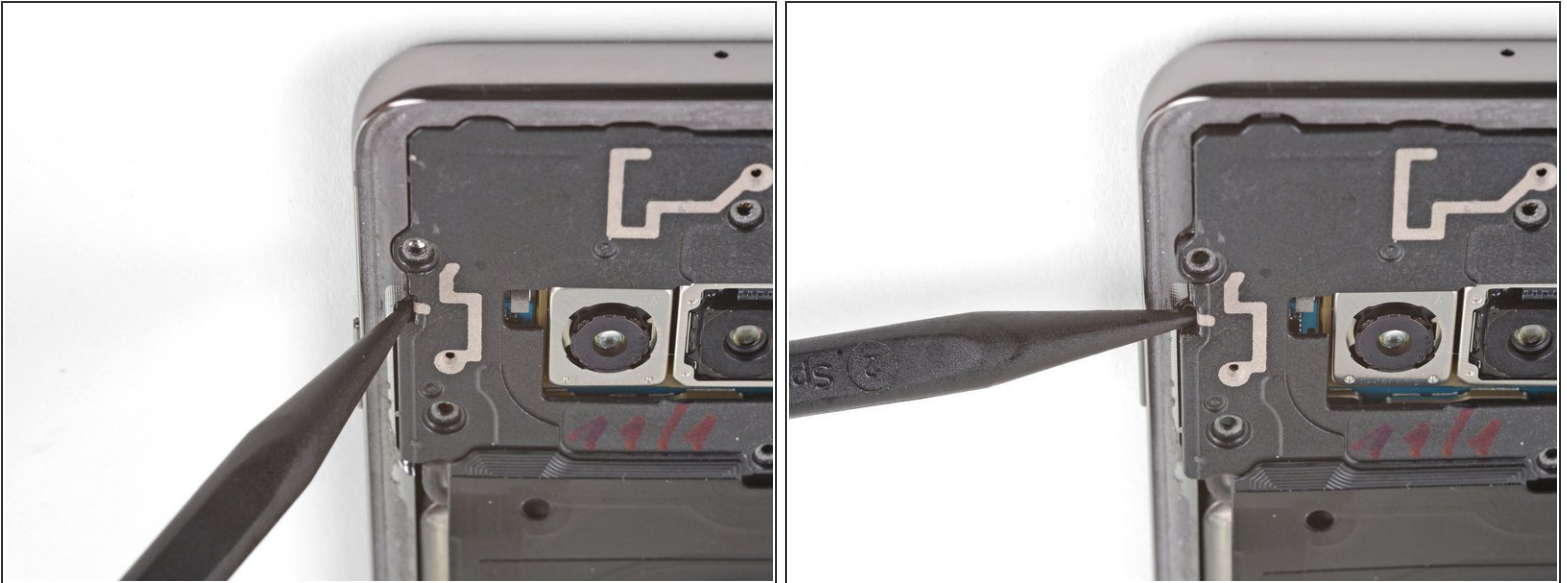


- i** The midframe is still held in place by a few plastic clips around the edge.
- Insert the point of a spudger into the notch on the right edge of the midframe, near the Bixby button.
  - Pry up to loosen the midframe from the phone.

This document was generated on 2020-01-03 12:43:58 PM (MST).



### Step 3



- Insert the point of a spudger into the notch on the left edge of the phone, located near the power button.
- Pry up to loosen the midframe from the phone.

### Step 4



- Lift the midframe from the top corners and remove it from the phone.
- ★ To reinstall the top midframe:
  - [Align the midframe's top edge to the phone](#) and lay the frame down on the phone.

- [Use fingers to apply pressure along the midframe perimeter](#) to snap the midframe clips back into

---

place. The edges should sit flush against the phone edge.

---

To reassemble your device, follow these instructions in reverse order.