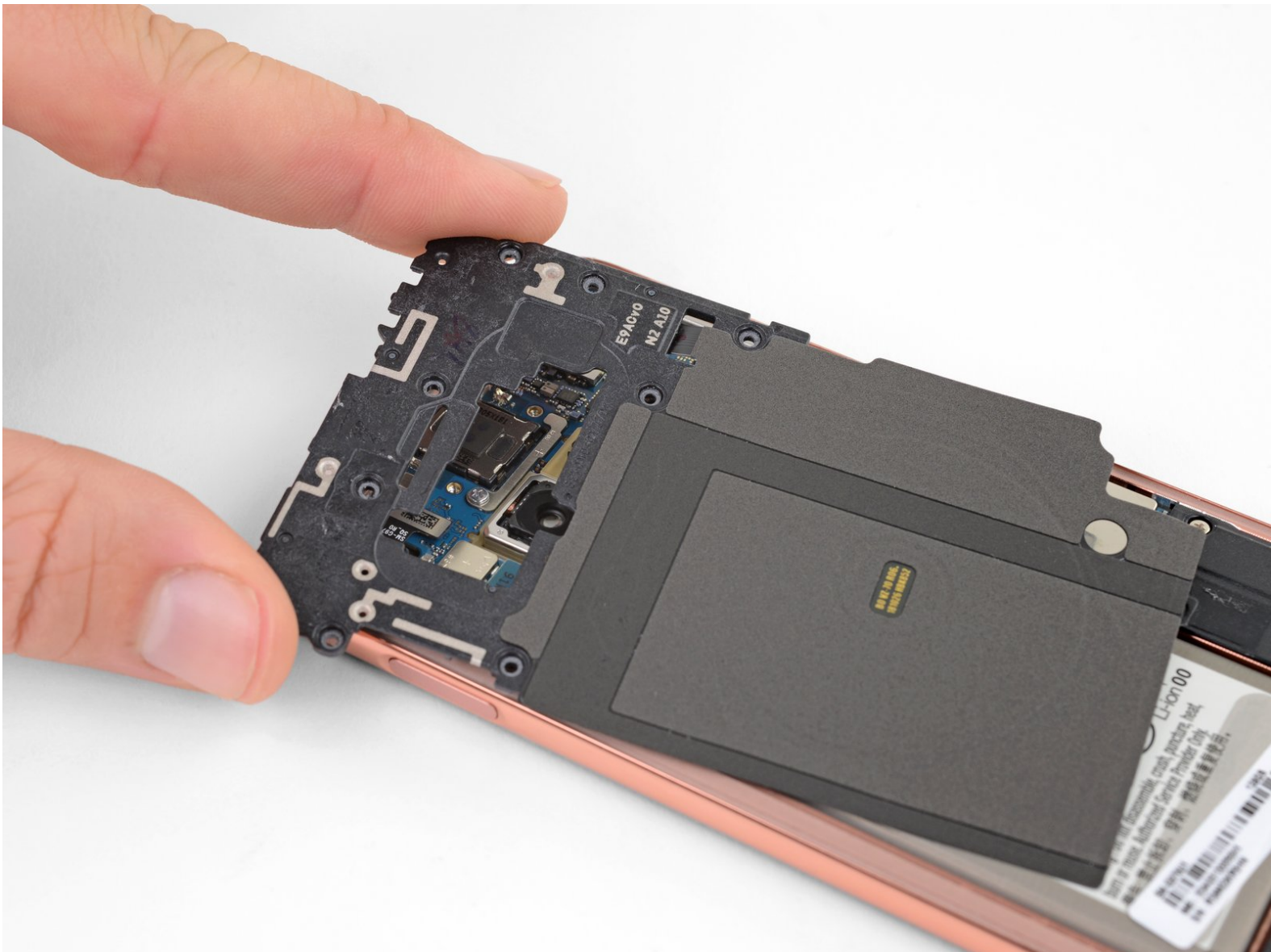




Samsung Galaxy S10e Midframe Replacement

Prerequisite-only guide to remove the midframe in a Samsung Galaxy S10e.

Written By: Adam O'Camb



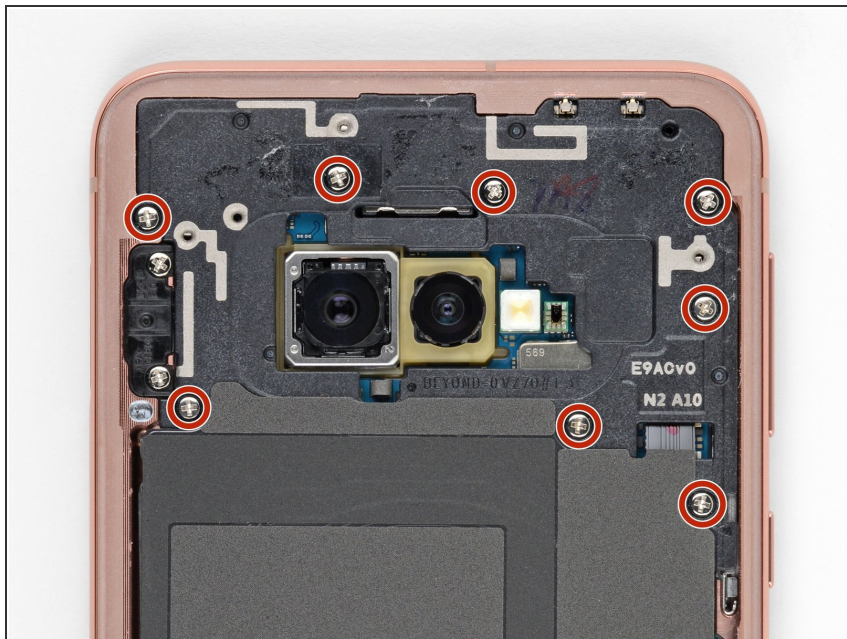
INTRODUCTION

Prerequisite-only guide to remove the midframe in a Samsung Galaxy S10e. The wireless charging coil and NFC coil are both included in the midframe.

TOOLS:

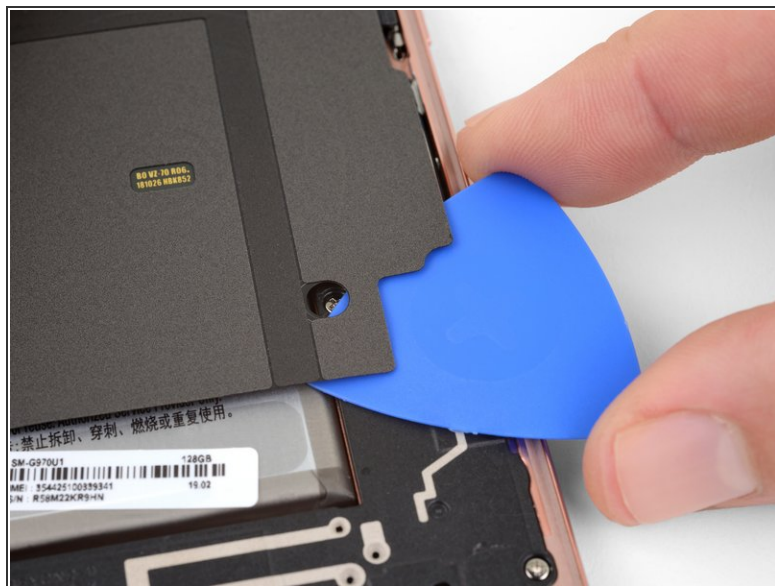
- [iFixit Opening Picks set of 6](#) (1)
 - [Spudger](#) (1)
 - [Phillips #00 Screwdriver](#) (1)
-

Step 1 — Midframe



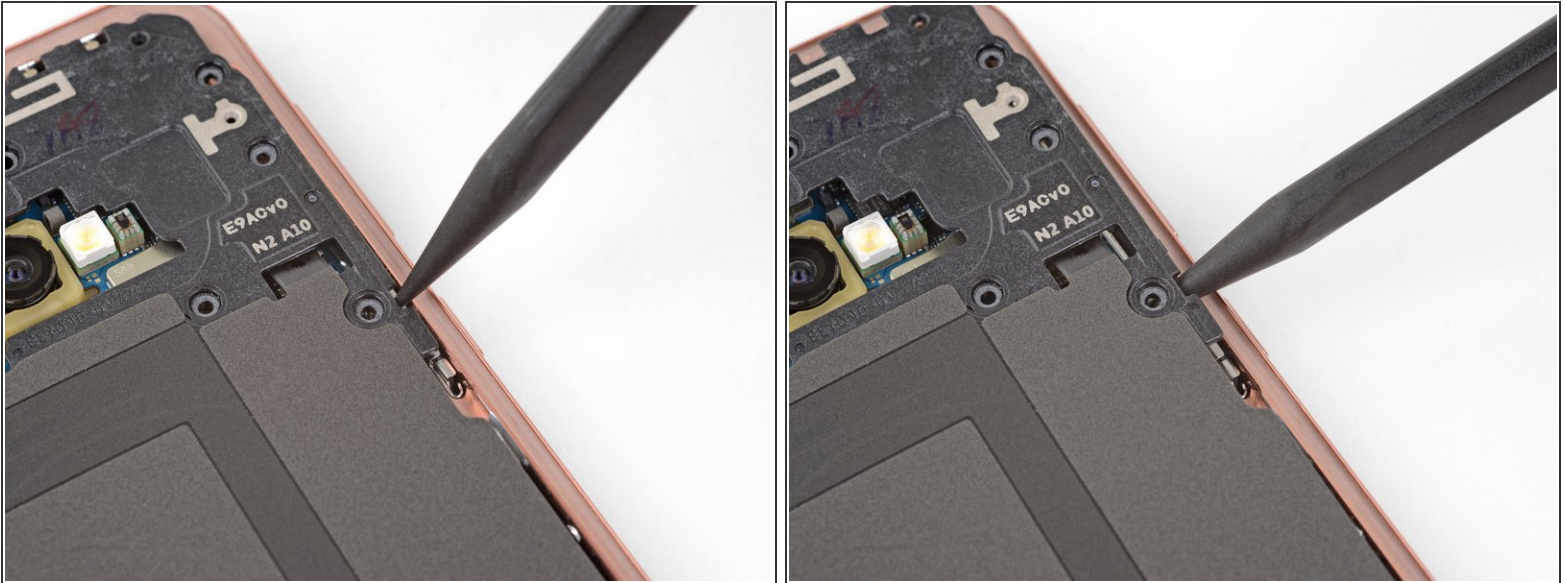
- Remove the eight 3.9 mm Phillips screws securing the upper midframe to the phone.

Step 2



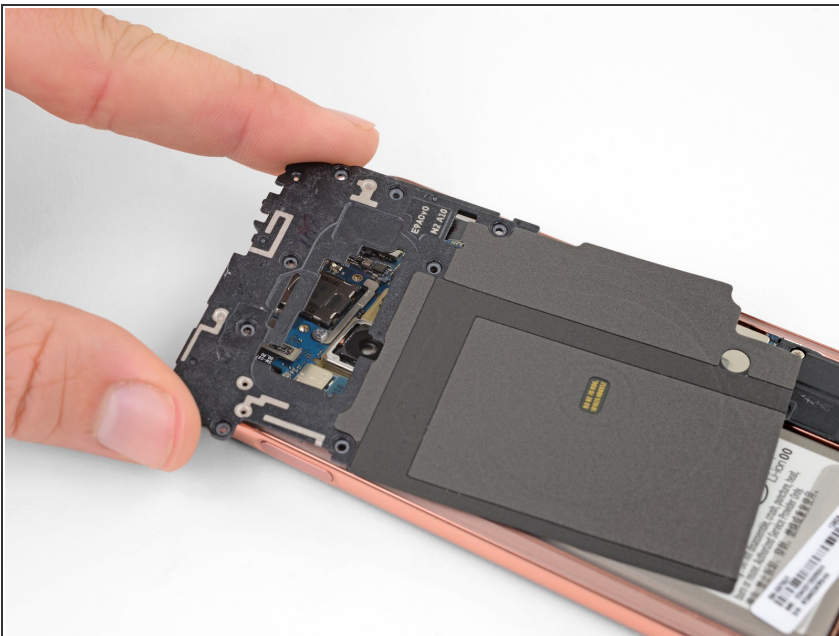
- Slide an opening pick under the bottom right corner of the upper midframe to separate the adhesive holding it to the lower midframe.

Step 3



- Insert the point of a spudger in the small cutout on the right edge of the plastic part of the upper midframe, near the Bixby button.
- Use the point of the spudger to pry the midframe up from the phone chassis.

Step 4



- Lift the midframe by the plastic section and remove it from the phone.
- ✦ To reinstall, first insert the top edge of the assembly into the phone's frame, and then gently press down on the rest of the assembly to snap it into place.

To reassemble your device, follow these instructions in reverse order.