



Samsung Galaxy S4 Active Volume Button Replacement

A free guide on how to replace the volume buttons on a Samsung Galaxy S4 Active android smartphone.

Written By: Geoff Wacker



INTRODUCTION

Use this guide to replace a defective motherboard in your Samsung Galaxy S4 Active.



TOOLS:

- [iFixit Opening Tools](#) (1)
 - [Phillips #00 Screwdriver](#) (1)
 - [Spudger](#) (1)
-

Step 1 — Rear Case



- Pry with a plastic opening tool, or your fingernail, in the divot to the left of the rear-facing camera, near the power button.
- Lift the rear case by the corner nearest the divot and remove it from the phone.

Step 2 — MicroSD Card



- Use a plastic opening tool, or your fingernail, to press the microSD card slightly deeper into its slot until you hear a click.
- After the click, release the card and it will pop out of its slot.
- Remove the microSD card.

Step 3 — Battery



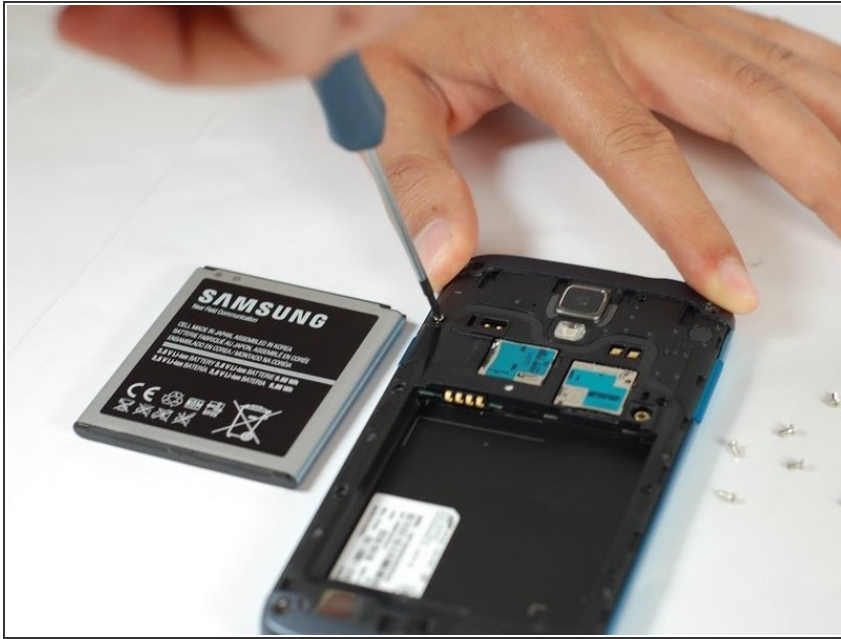
- Insert a plastic opening tool, or your finger, into the notch of the battery compartment and lift the battery upward to remove it.

Step 4 — SIM Card



- Use a plastic opening tool, or your fingernail, to press the SIM card slightly deeper into its slot until you hear a click.
- After the click, release the card and it will pop out of its slot.
- Remove the SIM card.

Step 5 — Midframe



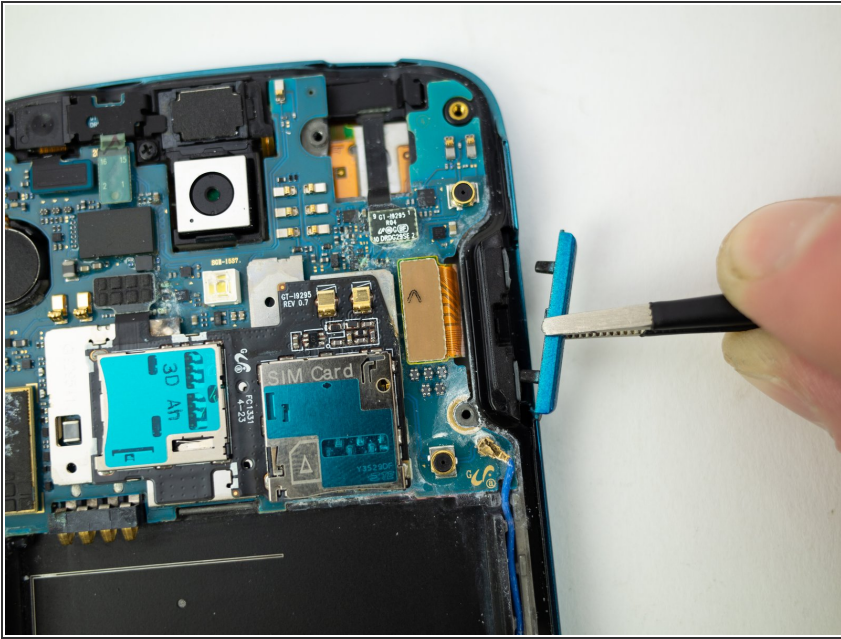
- Use the tip of a spudger to remove the four metallic pads located in each corner of the device.
- Using a Phillips #00 screwdriver, remove the 12 screws connecting the midframe to the device.

Step 6



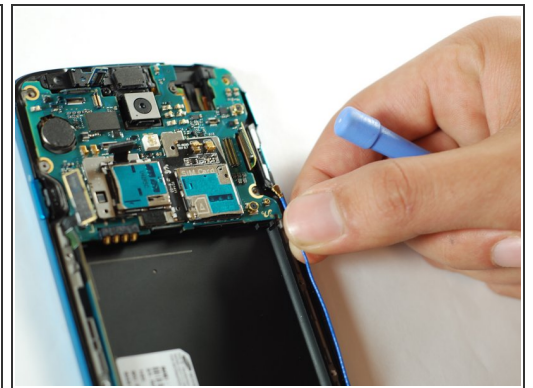
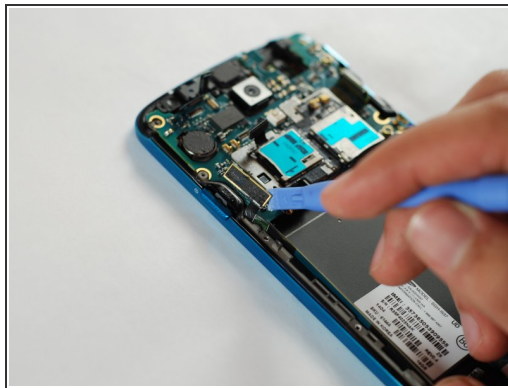
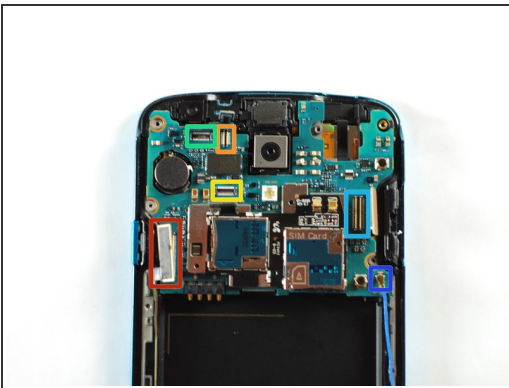
- Use the plastic opening tool to pry around the entire edge of the midframe now to release it from the front case.

Step 7 — Volume Button



- Pull the volume button out with a pair of blunt nose tweezers.

Step 8



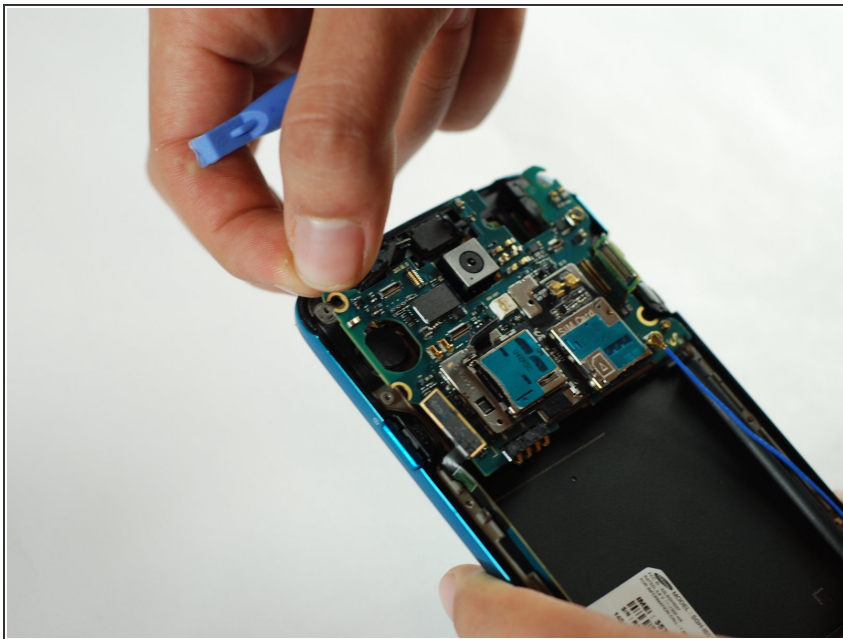
- Use the flat end of a plastic opening tool to disconnect the USB board connector.
- Disconnect the front-facing camera cable connector.
- Disconnect the earpiece speaker assembly cable connector.
- Disconnect the headphone jack assembly cable connector.
- Disconnect the display/digitizer cable connector.
- Disconnect the antenna cable connector.

Step 9



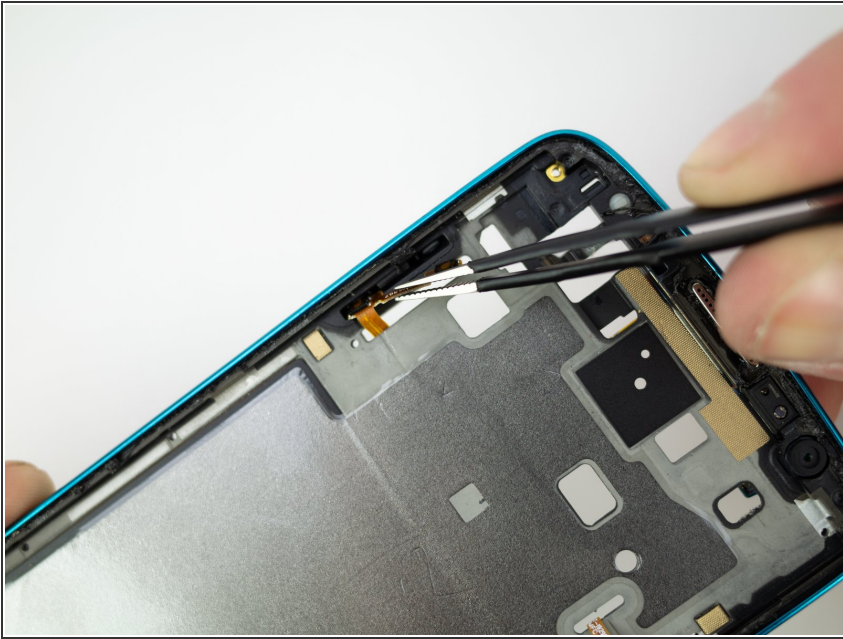
- Remove the single 2.4 mm Phillips #00 screw from the motherboard assembly.

Step 10



- Remove the motherboard.

Step 11



- Flip

To reassemble your device, follow these instructions in reverse order.