



# Samsung Galaxy S4 Mini Charging Assembly

Replacement of the USB Board, which contains the charging port and headphone jack

Written By: Francis Barnett



# INTRODUCTION

Use this guide to replace the charging assembly in the event of an inability to charge.



## TOOLS:

- [iFixit Opening Tools](#) (1)
- [Phillips #00 Screwdriver](#) (1)
- [Tweezers](#) (1)



## PARTS:

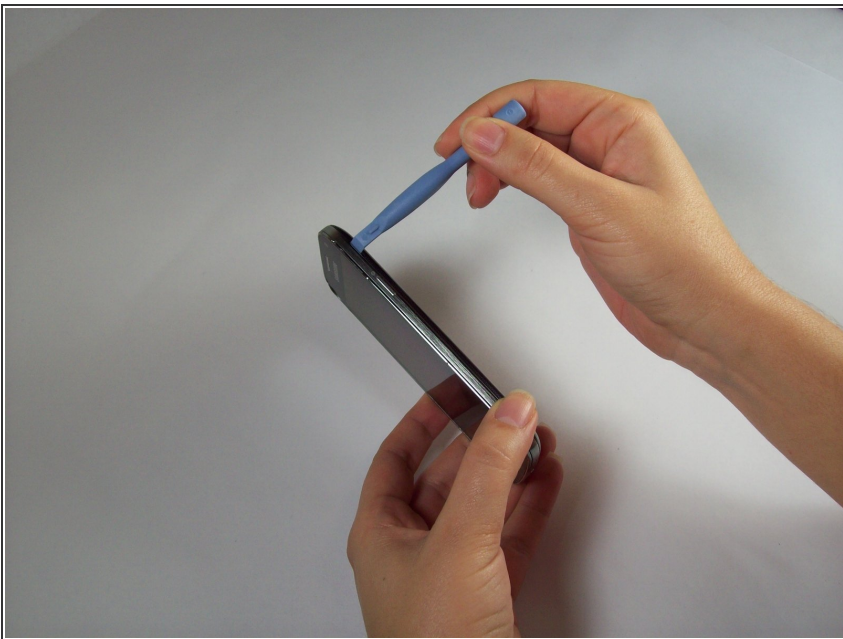
- [Samsung Galaxy S4 Mini Charging Assembly \(Sprint\)](#) (1)

## Step 1 — Battery



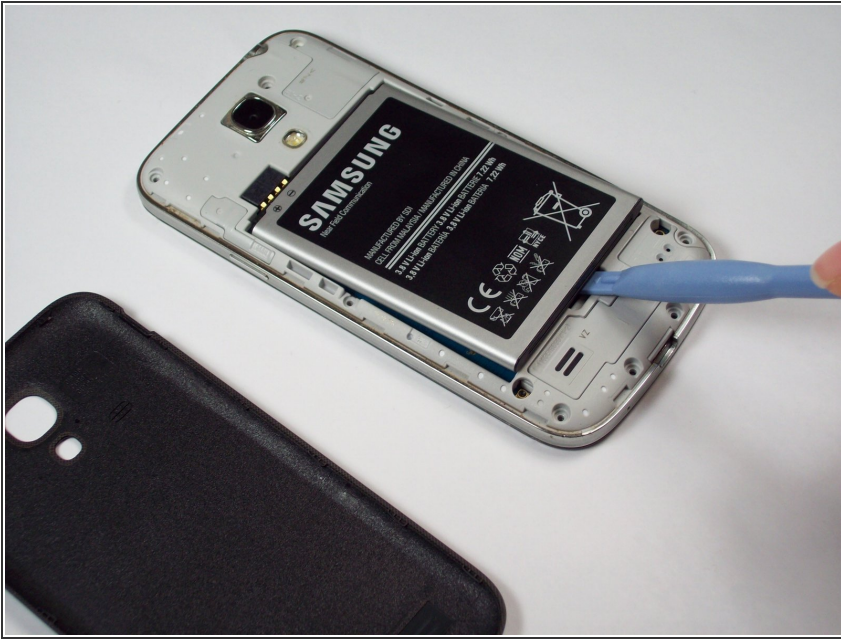
- Press and hold the END key to power the phone down.

## Step 2



- Remove the back cover of the cell phone using a plastic opening tool.

### Step 3



- Pry the battery out using a plastic opening tool.

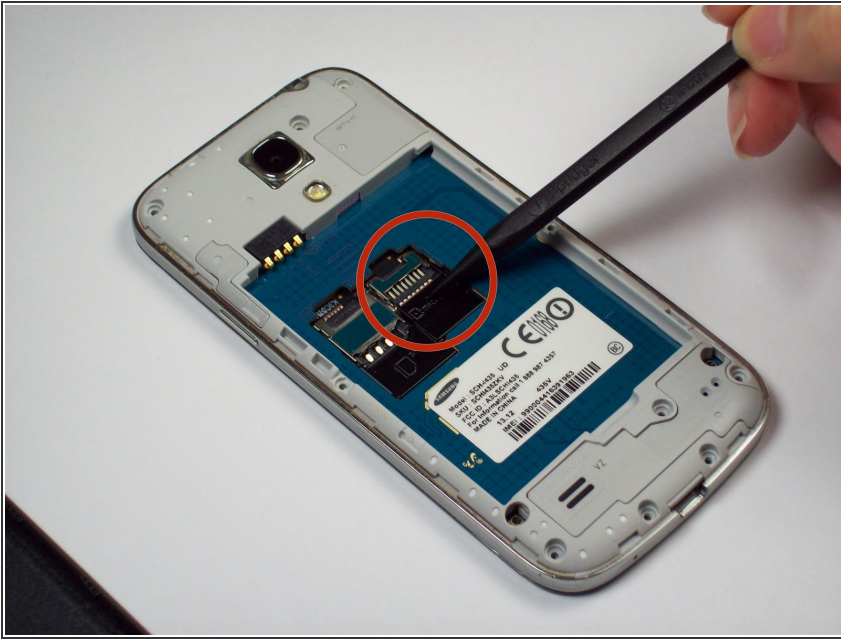
### Step 4 — SIM Card



- Using tweezers, remove the SIM card by sliding it towards the bottom of the device.

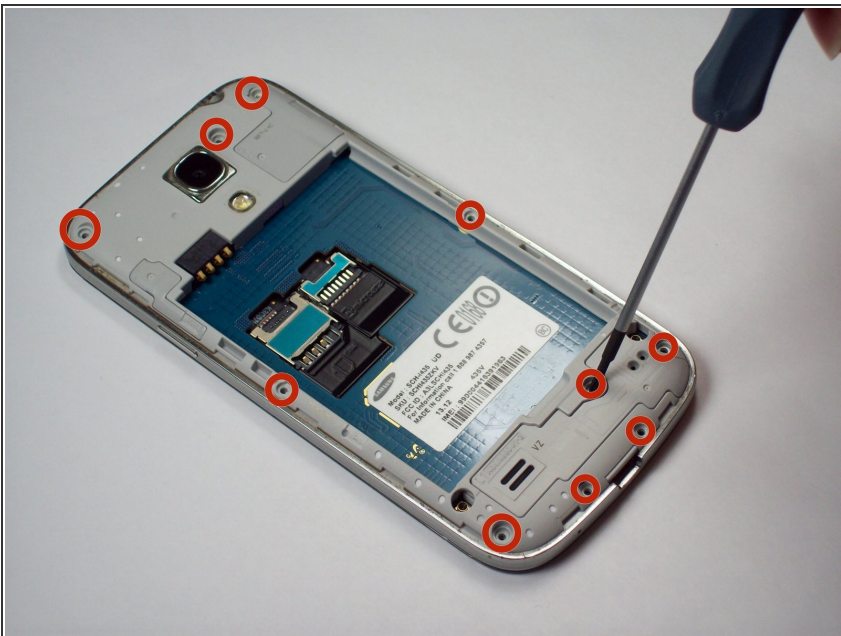


## Step 5 — SD Card



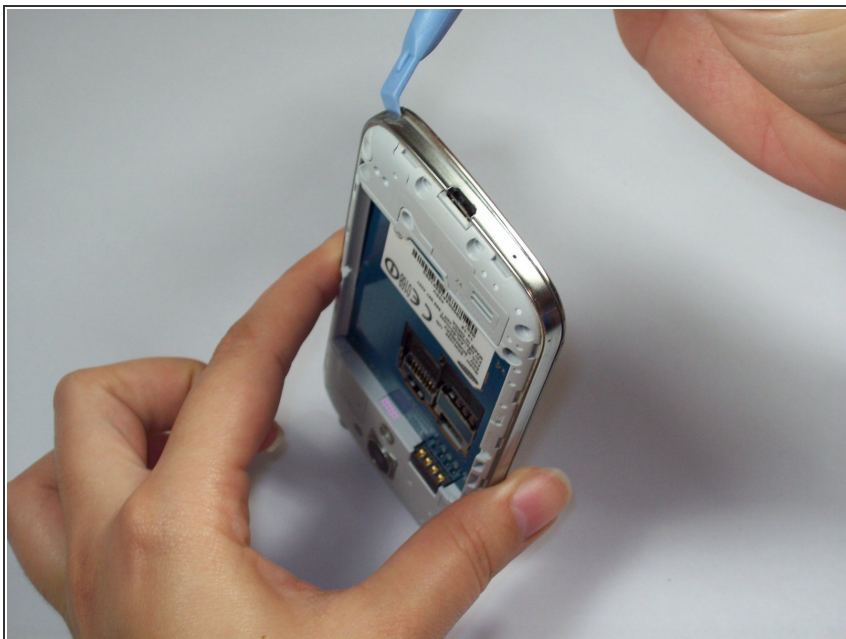
- Using a nylon spudger, push through the hole at the top of the memory card holder to slide it out.

## Step 6 — Charging Assembly



- Remove the 10 4.0 mm Phillips screws on the back of the phone using the #00 Phillips screwdriver.
- Not needed, but Tweezers can be helpful in removing the screws from their holes, as their size makes removal a tad difficult.

## Step 7



- Starting at the USB port, slide a plastic tool around the perimeter of the phone between the rear housing and frame. As you work your way around the edge you will feel the clips release.

## Step 8



- Carefully separate the rear housing and the mid-frame to reveal the inside of the phone.

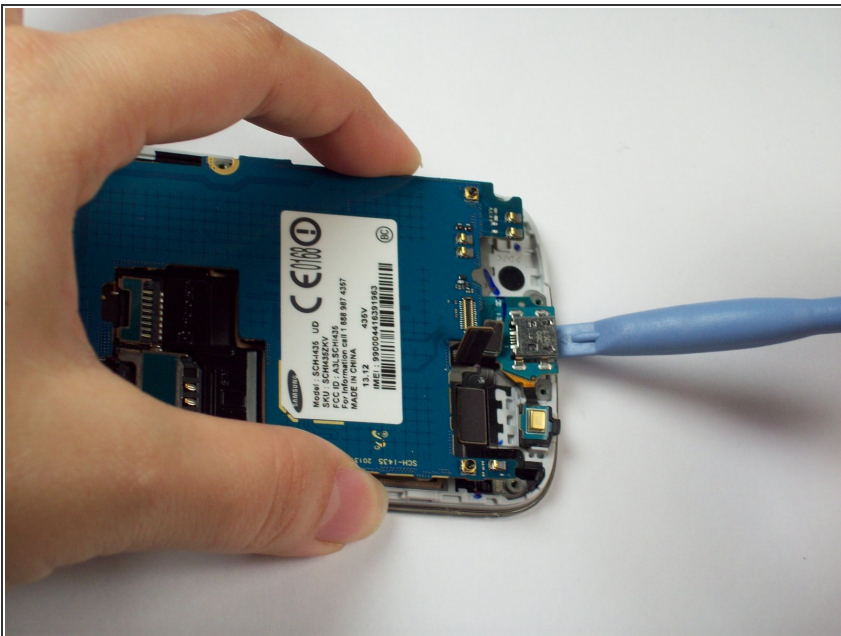


## Step 9



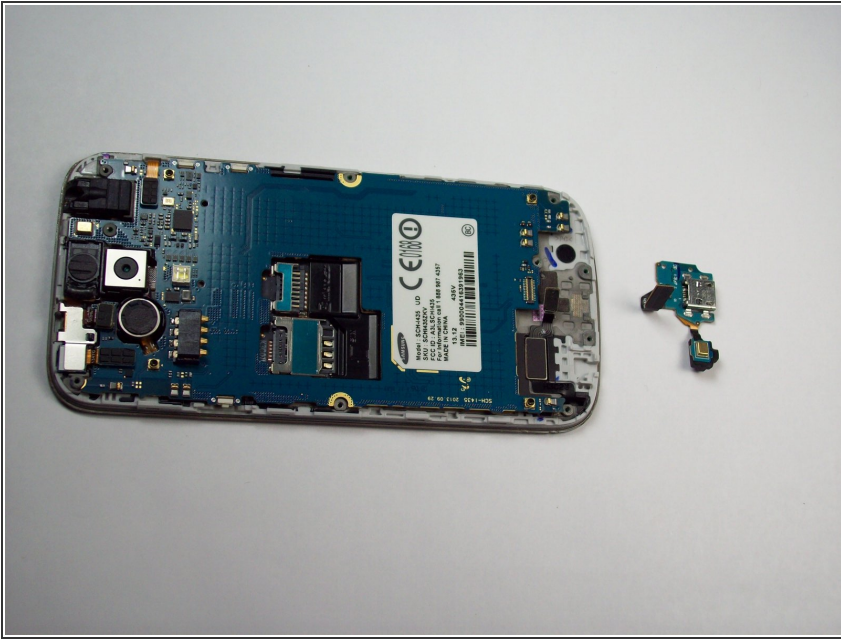
- Remove the 2 flex cables shown that attach to the USB board, Tweezers can be especially helpful here.

## Step 10



- Gently pry underneath the charging port using the plastic opening tool to separate it from the double sided tape below.

## Step 11



- Once its released, gently lift the main board and remove the USB board containing the charging port.

To reassemble your device, follow these instructions in reverse order.