



Samsung Galaxy S4 Mini SIM Card Replacement

It will show the user how to replace the SIM Card in a Samsung Galaxy S4 Mini.

Written By: Armando Campos



INTRODUCTION

Use this guide to replace the SIM card in your Samsung Galaxy S4 Mini.



TOOLS:

- [Spudger](#) (1)



PARTS:

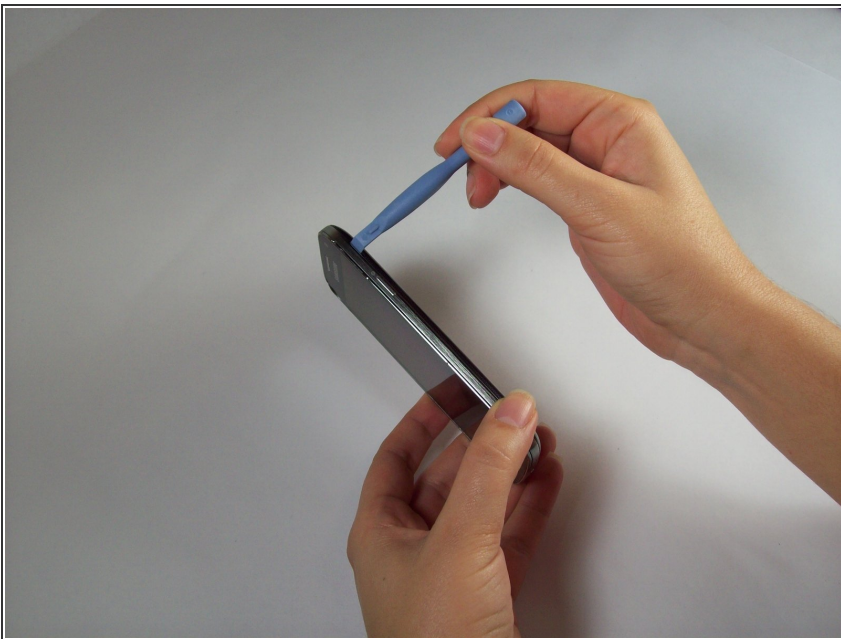
- [SIM Card](#) (1)

Step 1 — Battery



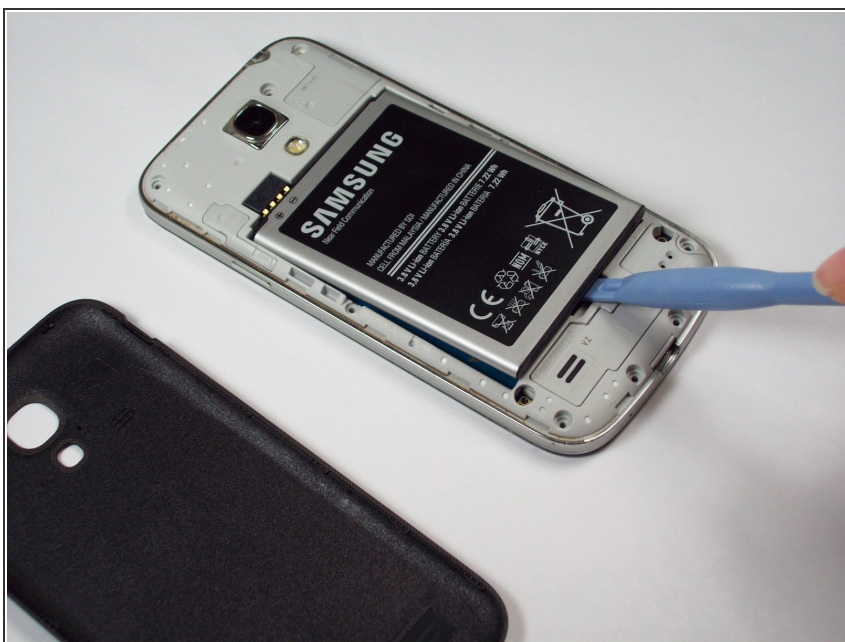
- Press and hold the END key to power the phone down.

Step 2



- Remove the back cover of the cell phone using a plastic opening tool.

Step 3



- Pry the battery out using a plastic opening tool.

Step 4 — SIM Card



- Using tweezers, remove the SIM card by sliding it towards the bottom of the device.

To reassemble your device, follow these instructions in reverse order.