



# Samsung Galaxy S4 Mini Screen and Digitizer Replacement

A guide on how to replace a cracked or damaged AMOLED screen and digitizer assembly on the Samsung Galaxy S4 Mini.

Written By: Richard Suovanen



## INTRODUCTION

This guide will provide instructions on how to replace a cracked or damaged AMOLED screen and digitizer assembly on your Samsung Galaxy S4 Mini.

### TOOLS:

- [Spudger](#) (1)
- [Phillips #00 Screwdriver](#) (1)
- [Tweezers](#) (1)
- [iFixit Opening Tools](#) (1)
- [iFixit Opening Picks set of 6](#) (1)
- [Heat Gun](#) (1)
- [Heavy-Duty Suction Cups \(Pair\)](#) (1)

### PARTS:

- [Galaxy S4 Mini AMOLED Screen and Digitizer](#) (1)

## Step 1 — Battery



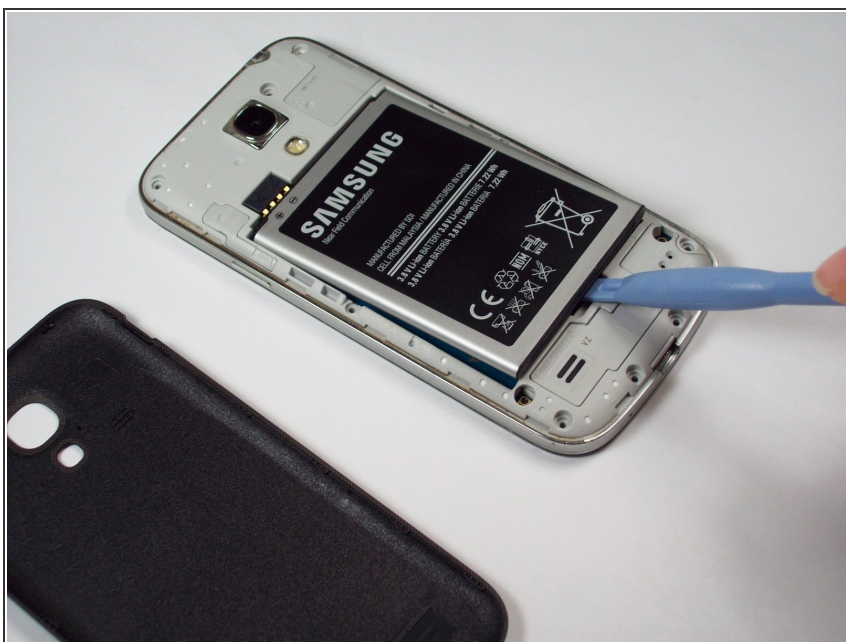
- Press and hold the END key to power the phone down.

## Step 2



- Remove the back cover of the cell phone using a plastic opening tool.

### Step 3



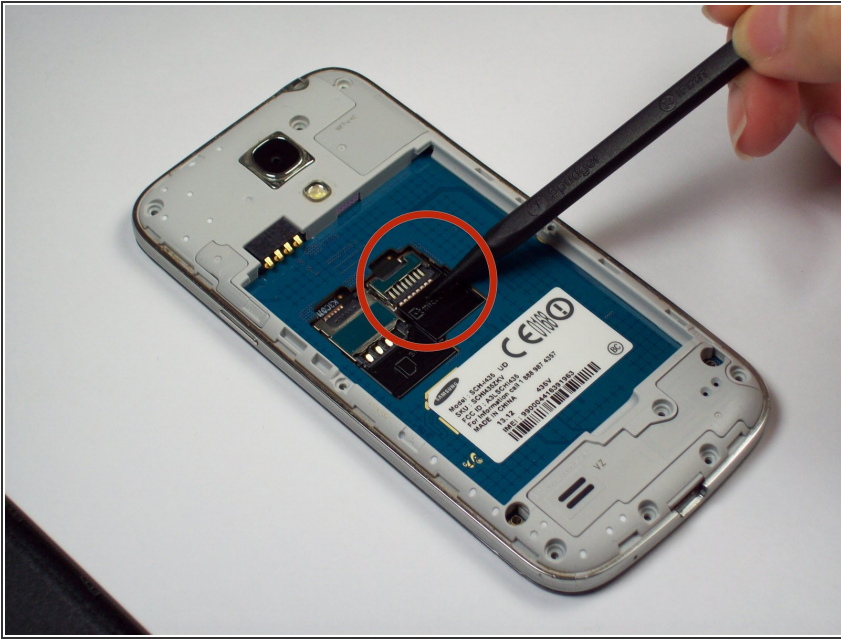
- Pry the battery out using a plastic opening tool.

### Step 4 — SIM Card



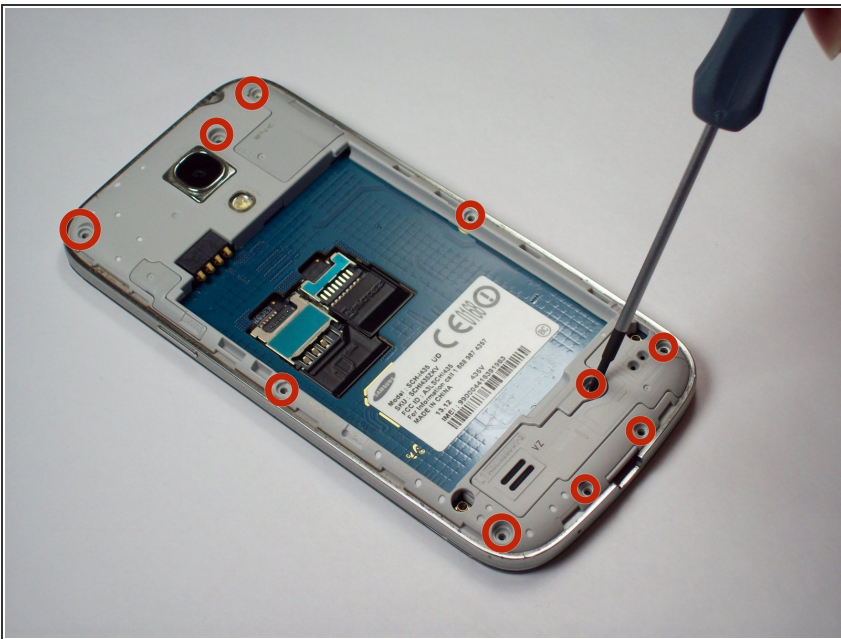
- Using tweezers, remove the SIM card by sliding it towards the bottom of the device.

## Step 5 — SD Card



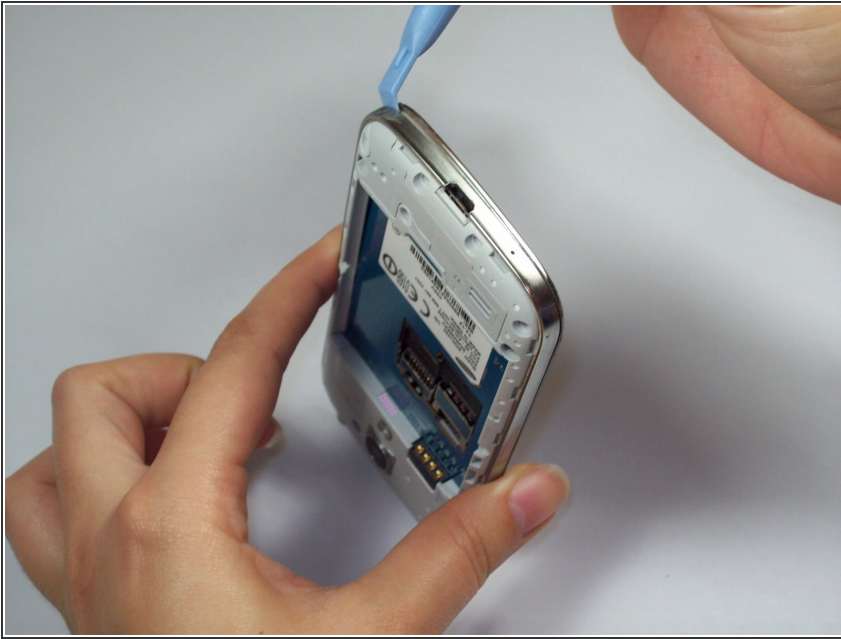
- Using a nylon spudger, push through the hole at the top of the memory card holder to slide it out.

## Step 6 — Charging Assembly



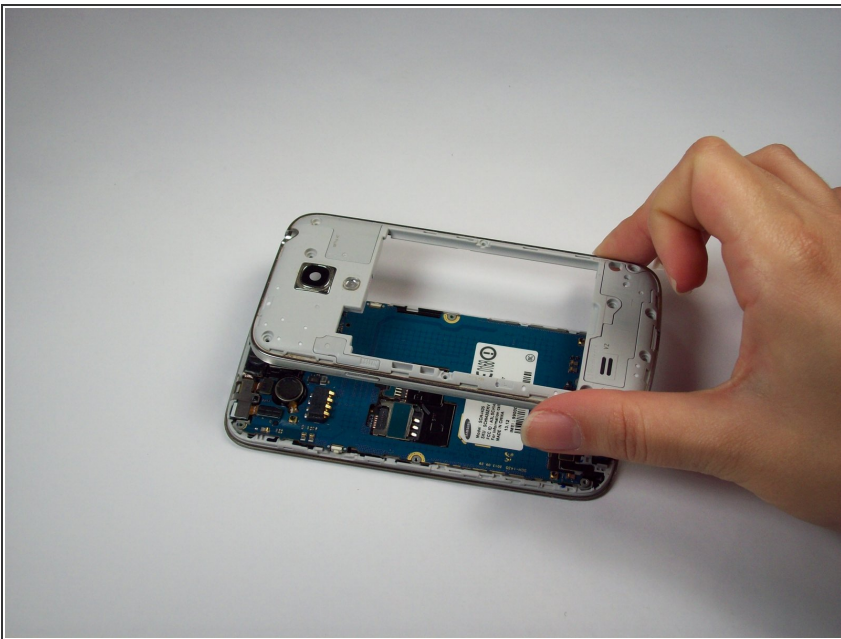
- Remove the 10 4.0 mm Phillips screws on the back of the phone using the #00 Phillips screwdriver.
- Not needed, but Tweezers can be helpful in removing the screws from their holes, as their size makes removal a tad difficult.

## Step 7



- Starting at the USB port, slide a plastic tool around the perimeter of the phone between the rear housing and frame. As you work your way around the edge you will feel the clips release.

## Step 8



- Carefully separate the rear housing and the mid-frame to reveal the inside of the phone.

## Step 9



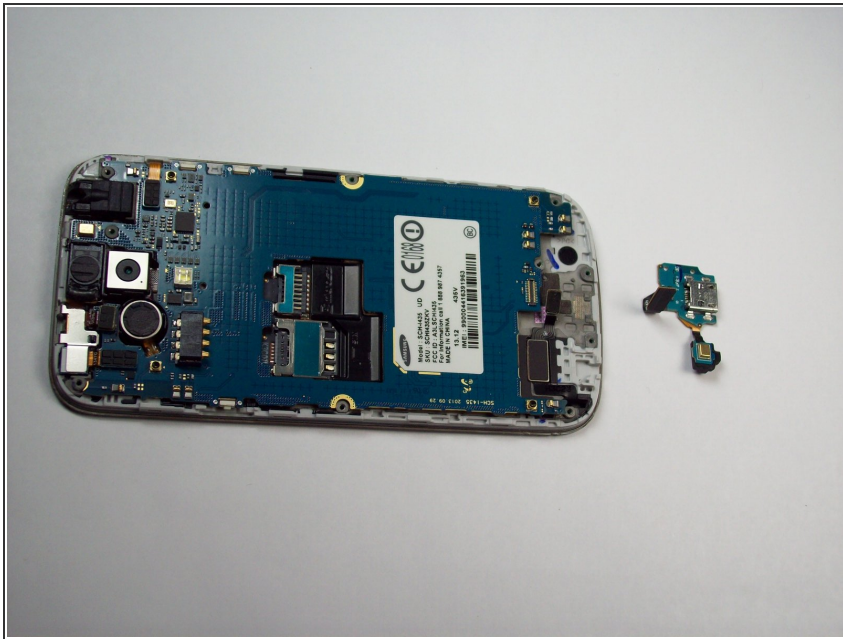
- Remove the 2 flex cables shown that attach to the USB board, Tweezers can be especially helpful here.

## Step 10



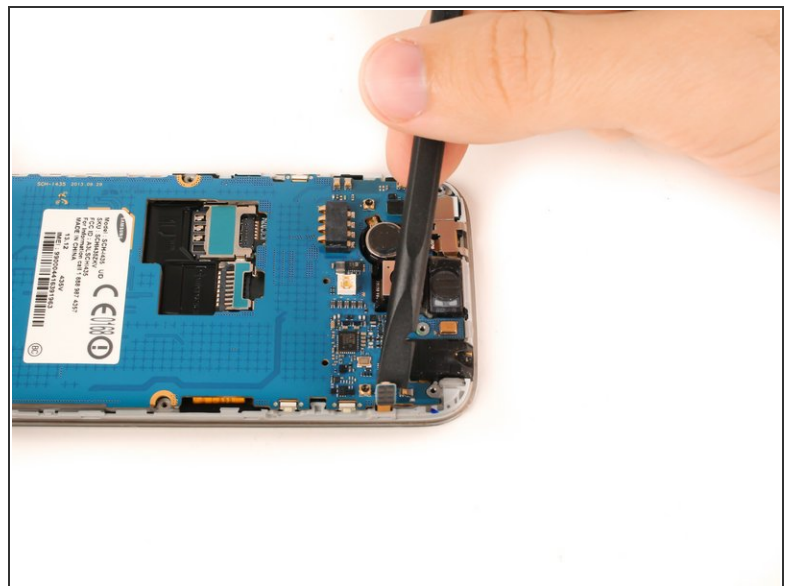
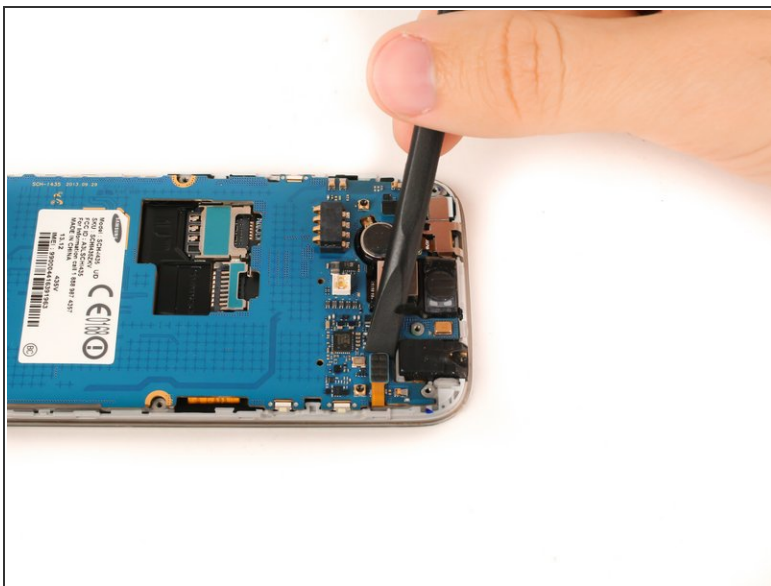
- Gently pry underneath the charging port using the plastic opening tool to separate it from the double sided tape below.

## Step 11



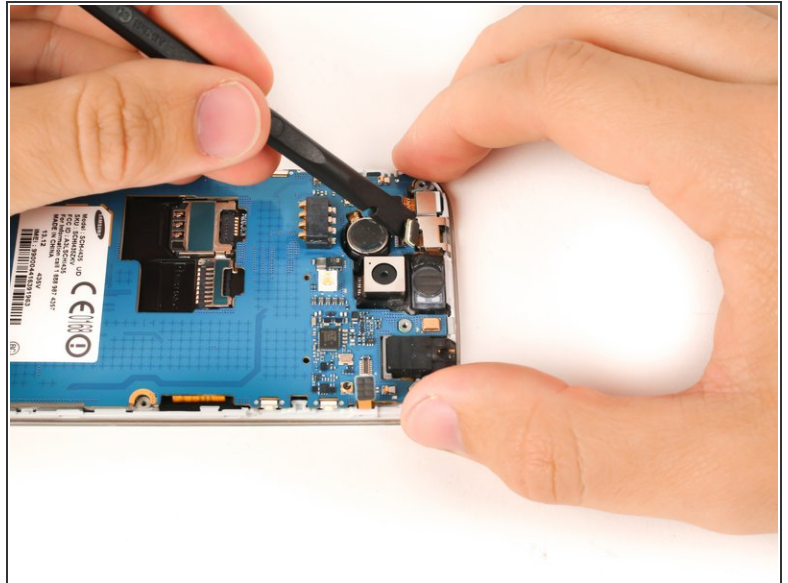
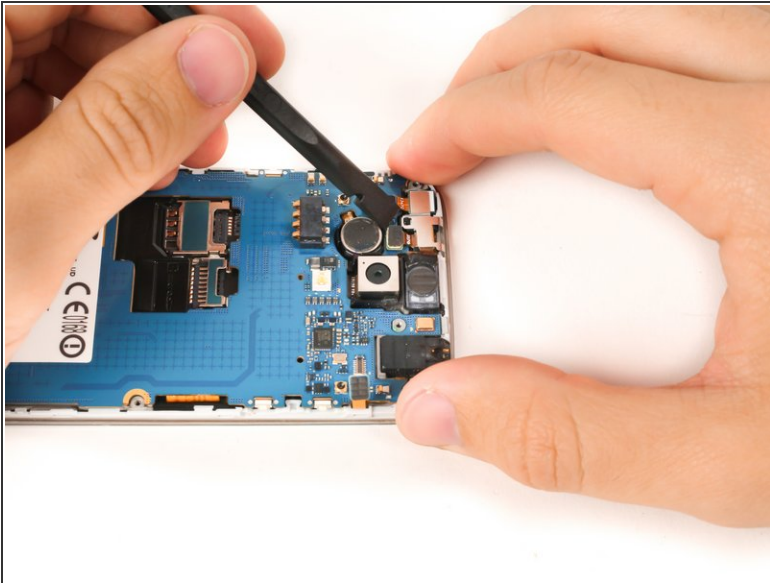
- Once its released, gently lift the main board and remove the USB board containing the charging port.

## Step 12 — LCD Screen & Digitizer Assembly



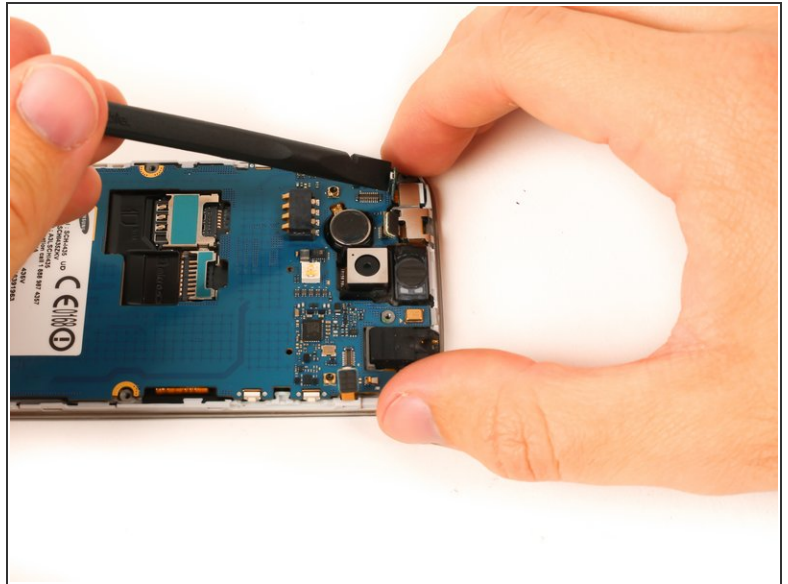
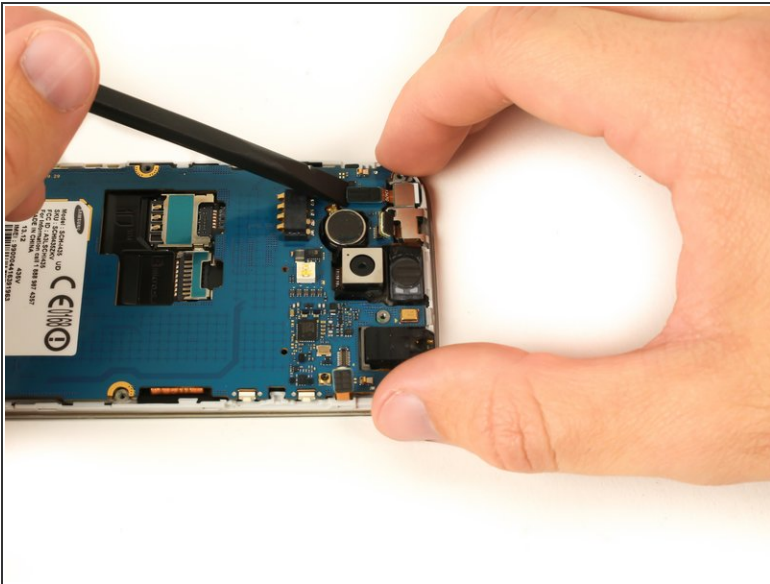
- Use the flat end of a nylon spudger to lift the headphone jack press-fit connector up to release the ribbon cable.

## Step 13



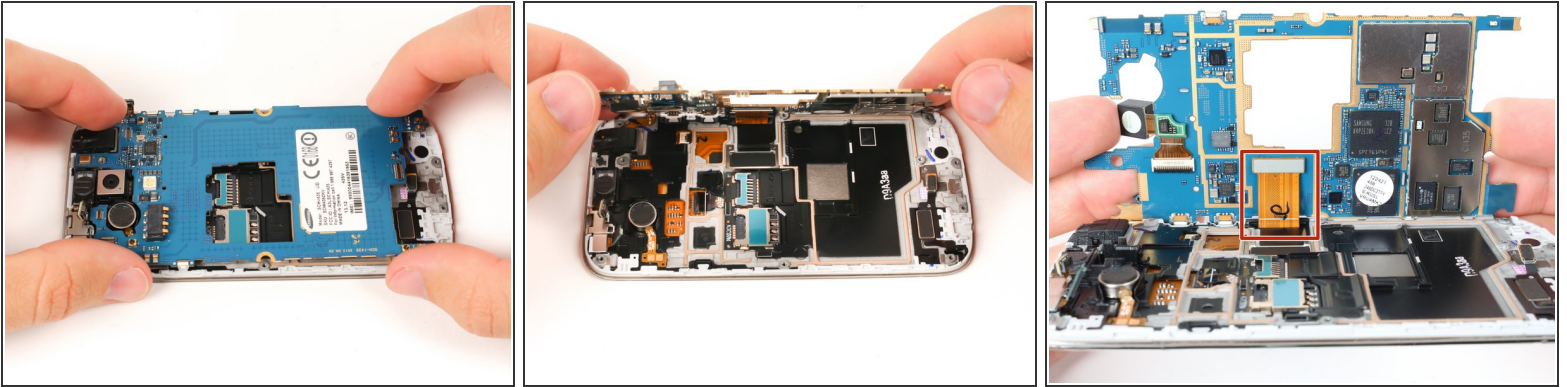
- Use the flat end of a nylon spudger to lift the infrared sensor press-fit connector up to release the ribbon cable.

## Step 14



- Use the flat end of a nylon spudger to lift the front-facing camera press-fit connector up to release the ribbon cable.

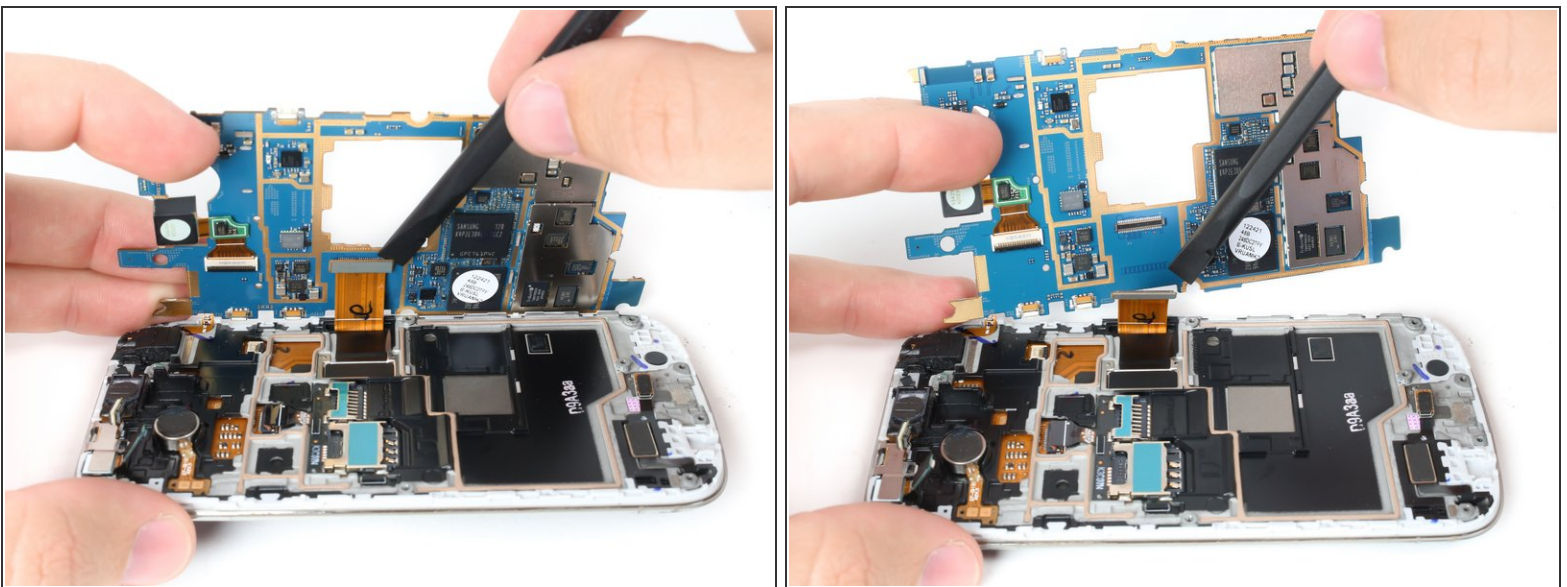
## Step 15



- Gently lift the motherboard up and partially away from the device.

⚠ The digitizer ribbon cable is still attached to the underside of the motherboard.

## Step 16



- Put the flat end of a nylon spudger under the lip of the digitizer press-fit connector and lift up to release the connector and free the motherboard.

## Step 17



- Use a heat gun or an [iOpener](#) to soften the adhesive underneath the perimeter of the screen.

## Step 18



- Use a suction cup to pull the screen away from the frame and create a small gap.
- ⓘ This should not require excessive force. Apply additional heat as needed to soften the screen adhesive.
- ⓘ Cover the screen with a layer of packaging tape if severe cracks or screen damage prevent a suction cup from obtaining a complete seal. The Galaxy S4 Mini also has enough of a gap between the frame and the screen to insert a [jimmy](#) or plastic opening pick. Carefully apply heat as needed, and wedge the screen free.

## Step 19



- Insert a plastic opening pick into the gap between the screen and the plastic housing.
- Slide the plastic opening pick along the edge of the screen to free the screen from the adhesive.

## Step 20



- Remove the LCD screen and digitizer assembly completely.

⚠ Feed the digitizer ribbon cable gently through the frame.

To reassemble your device, follow these instructions in reverse order.