



# Samsung Galaxy S5 Fingerprint Reader Replacement

Replace a torn, damaged or faulty fingerprint reader in your Galaxy S5 phone.

Written By: Patrick Lee



# INTRODUCTION

Replace a torn, damaged or faulty fingerprint reader in your Galaxy S5 phone.



## TOOLS:

- [Phillips #00 Screwdriver](#) (1)
- [iFixit Opening Picks set of 6](#) (1)
- [Spudger](#) (1)
- [iOpener](#) (1)
- [Heat Gun](#) (1)
- [Double-Sided Tape](#) (1)
- [iFixit Opening Tools](#) (1)
- [Microwave](#) (1)



## PARTS:

- [Samsung S5 Home button](#) (1)

## Step 1 — Display Assembly



- Use a plastic opening tool to pry up the plastic midframe connector panel.
  - Remove the connector panel with a pair of tweezers.
- ☑ There should be enough adhesive to readhere the panel upon reassembly, otherwise use a small amount of double-stick tape.

## Step 2



- Use the sharp tip of a spudger to pry the home button cable connector straight up off its socket.

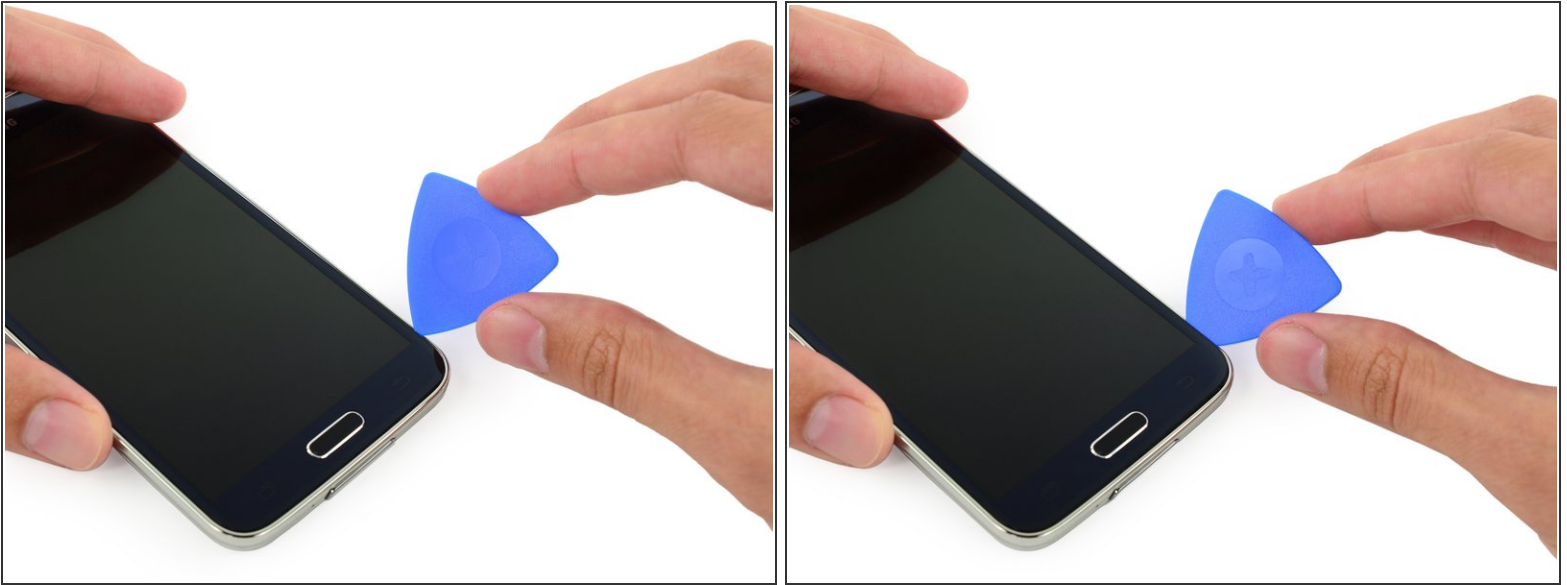


## Step 3



- i** In the following steps you will be using an iOpener to warm the adhesive affixing the display assembly to the rest of the phone. This will allow for a safer, easier screen removal. For proper iOpener use, follow our [iOpener heating guide](#), make sure to pay attention to all warnings.
- Place a heated iOpener on the left side of the phone for at least 90 seconds.
  - Reheat the iOpener and place it on the right half of the phone.

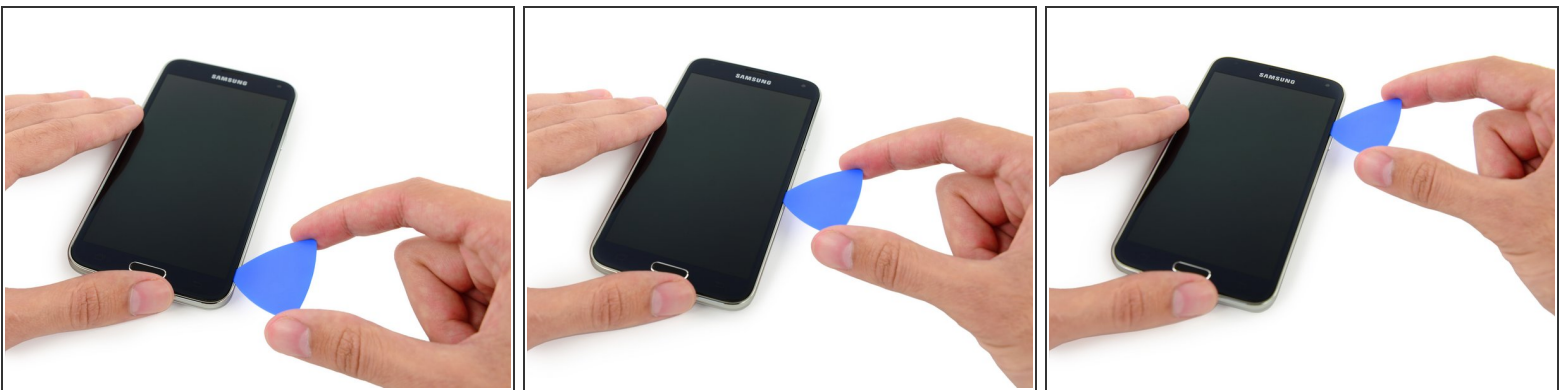
## Step 4



**i** In the following steps you will be using an opening pick to separate the adhesive securing the front panel glass. Only pry where directed. If you experience resistance, stop sliding the opening pick and reapply heat.

- Insert the edge of an opening pick underneath the bottom right side of the front glass.

## Step 5



- Slide the opening pick up along the right side of the display.

## Step 6



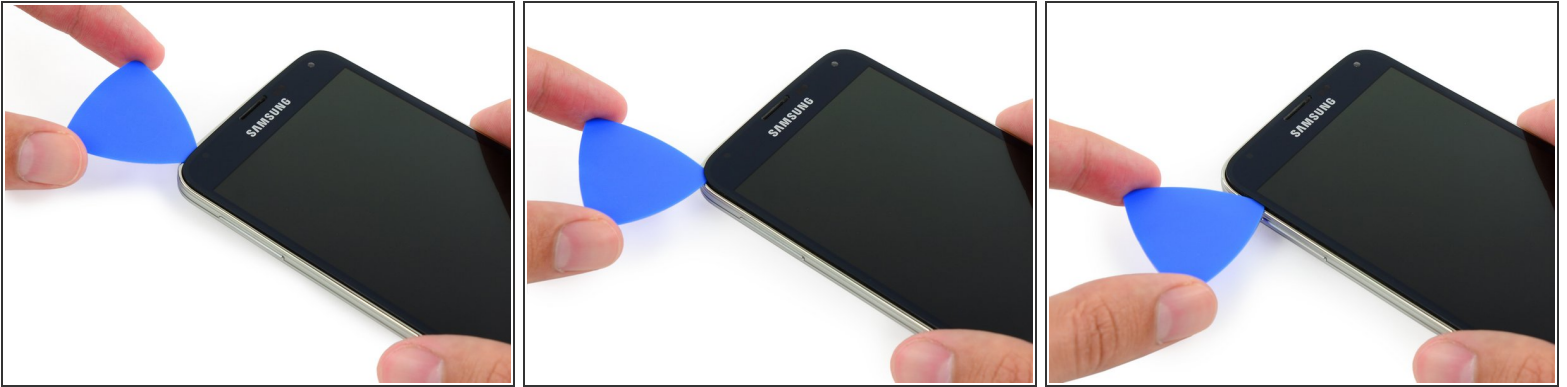
- Carefully slide the pick around the corner, stopping before the speaker grille at the top of the phone.

## Step 7



- ⓘ The adhesive securing the top of the phone is only a narrow strip above the earpiece speaker. Slide the pick along the top of the speaker to avoid damaging internal components.
- Slide the opening pick across the top of the phone, being very careful **not** to insert the pick too deeply.

## Step 8



- Carefully slide the pick around the upper left corner.

⚠ If you encounter any resistance from cooling adhesive, reapply a heated iOpener to the left side of the phone.

## Step 9



- Slide the opening pick down along the left half of the phone stopping at the lower left corner.

## Step 10



- Slide the opening pick all the way to the bottom left corner of the phone, making sure it is securely placed.
- i** In the following step you will be placing an iOpener over the home button end of the phone, you won't want your opening pick to slip out.

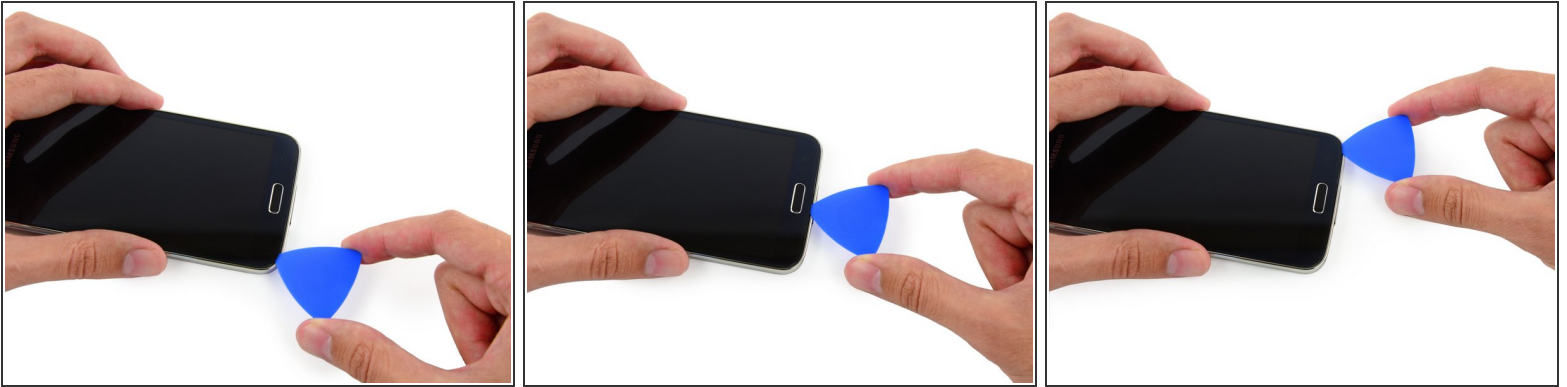
## Step 11




- Place a reheated iOpener over the bottom portion of the display assembly.
- i** There are delicate components in this portion of the phone, you want to ensure the adhesive is warm and easy to loosen to protect the phone.

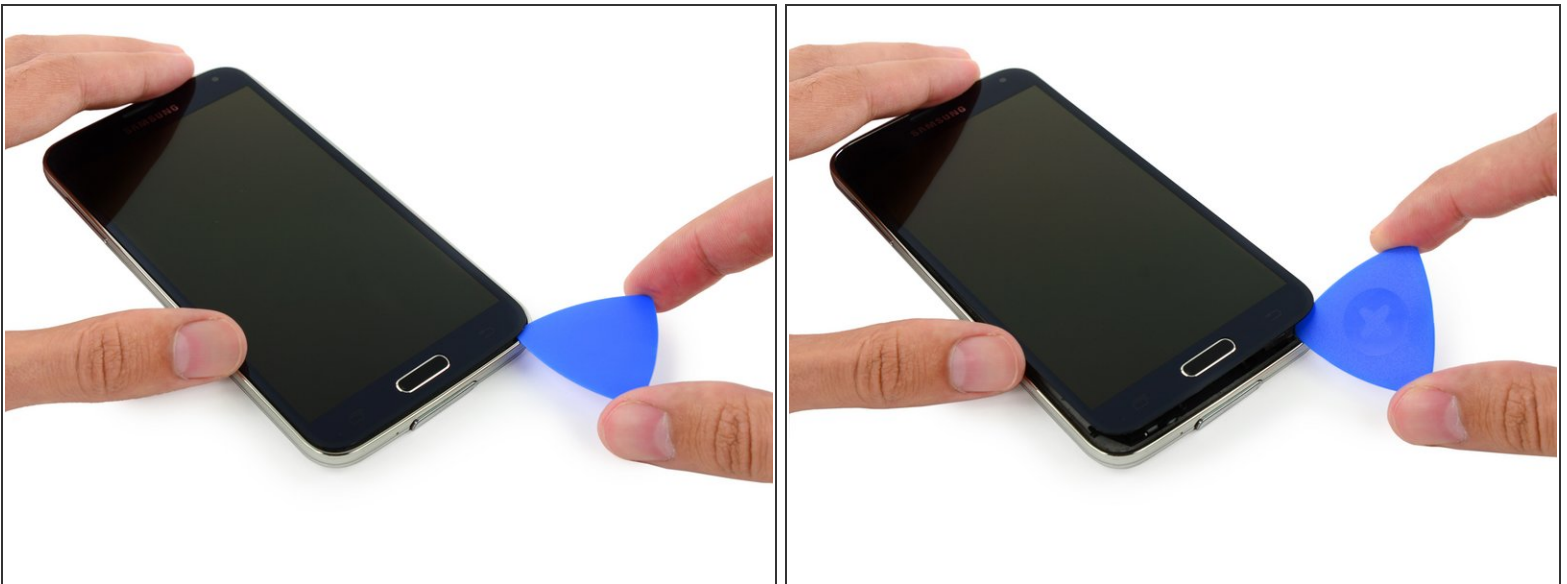


## Step 12




-  The bottom end of the phone contains the soft button and home button ribbon cables. If you insert the opening pick too far into the phone you risk cutting these cables.
- Slide the very end of the opening pick across the bottom edge of the display to separate the last of the remaining adhesive.

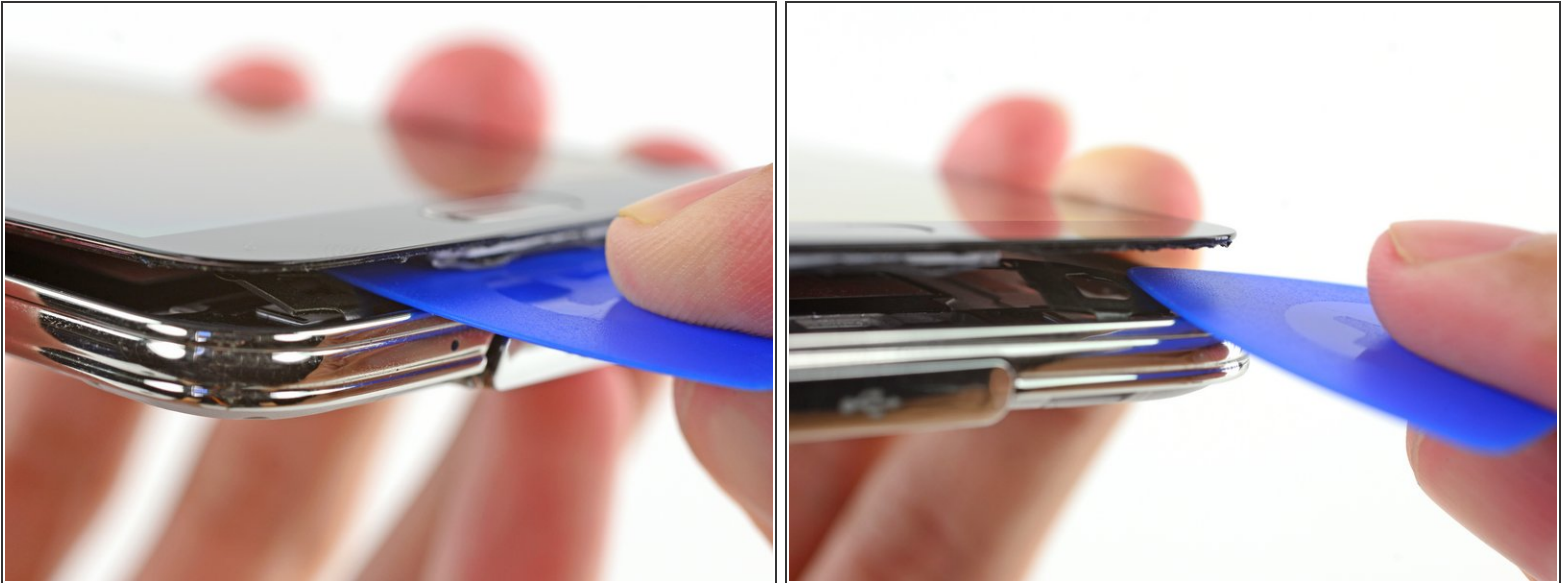
## Step 13



- Twist the opening pick to detach the glass from the phone.

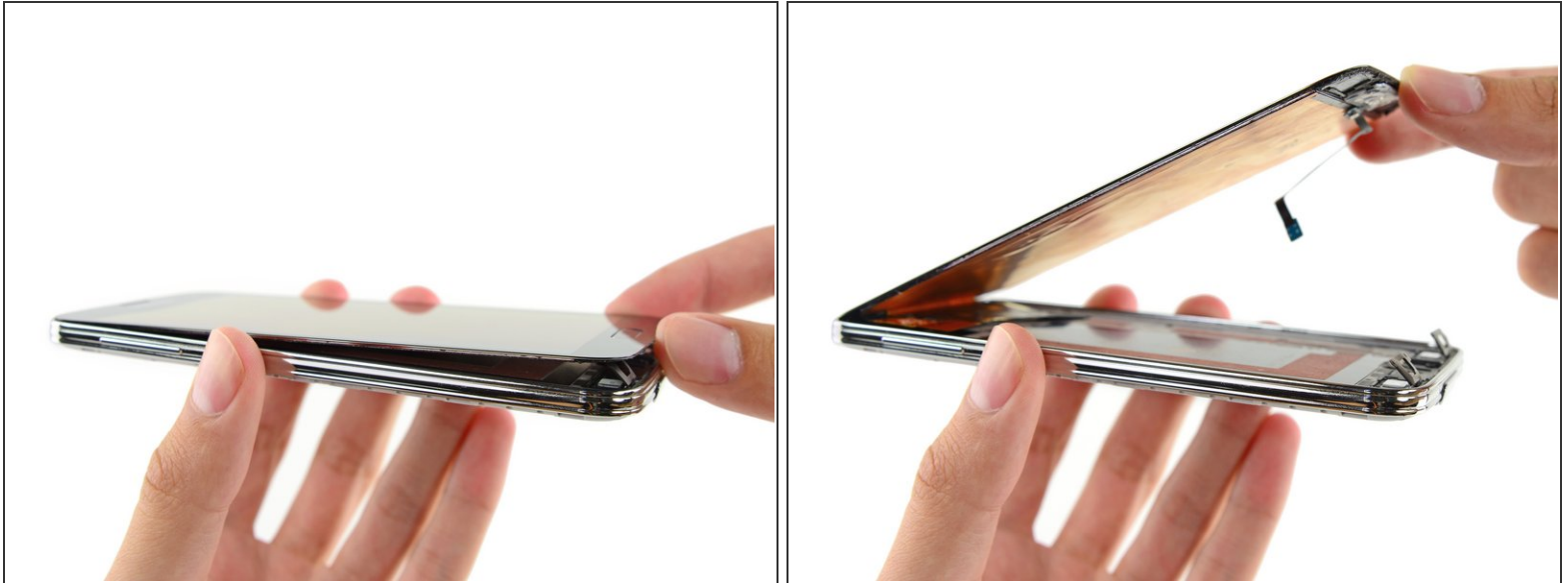
 If the front panel does not detach easily, it may require additional adhesive cutting.

## Step 14



- ⓘ If the front panel is not easily freed, the adhesive on the soft button cable may need to be separated.
- ⚠ These cables are thin and easily damaged, therefore be certain you are only peeling them off the display assembly and not lacerating them.
- Insert an opening pick under the soft button icons on the display and pry the button cables down off the inside of the front panel.

## Step 15

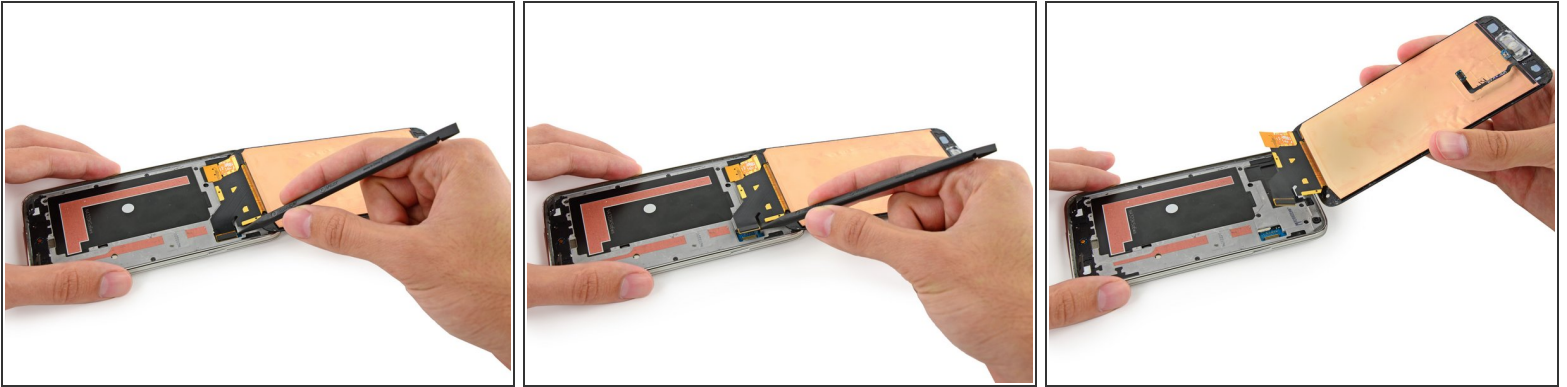


- Slightly lift, but do **not** remove, the home button end of display assembly.

⚠ Do not remove the front panel entirely. It is still attached by a connector.

⚠ If you are reusing the home button flex cable, be careful not to sever the cable from the home button. Adhesive can cause the cable to rip apart from the home button. While the home button will still work, the fingerprint scanner will not.

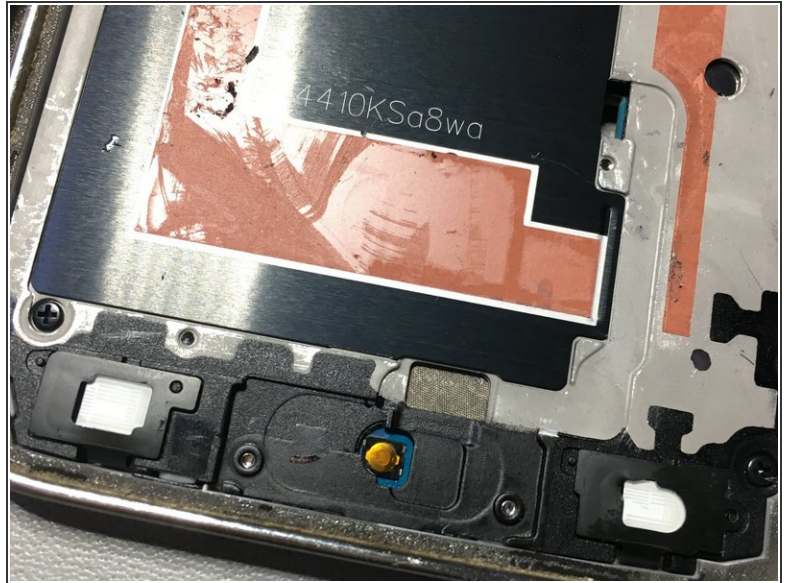
## Step 16



- Use the sharp tip of a spudger to lift the front panel assembly cable connector straight up off its socket on the motherboard.
  - Safely remove the front panel assembly from phone.
- ☒ If your replacement display did not come with a home button, follow our [Home Button Assembly](#) guide to transfer your old button over to the new display, or install a new button.



## Step 17 — Replacing a torn home button cable



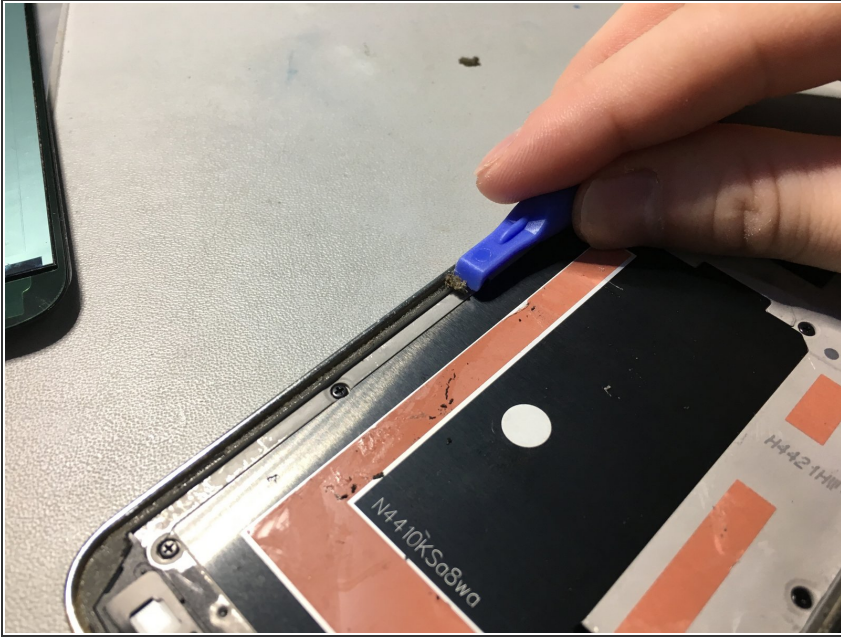
- For this guide I am demonstrating on a Samsung Galaxy S5 which had the fingerprint reader cable for the home button torn.
- The home button 'press' is still functional with the underlying button (see second photo), but this guide restores your fingerprint scanner.

## Step 18 — Home button cable socket



- Make sure there isn't anything still connected in this socket.

## Step 19 — Remove remaining adhesive



- Scrape the remaining adhesive from the edges of the midframe using a plastic pry tool.

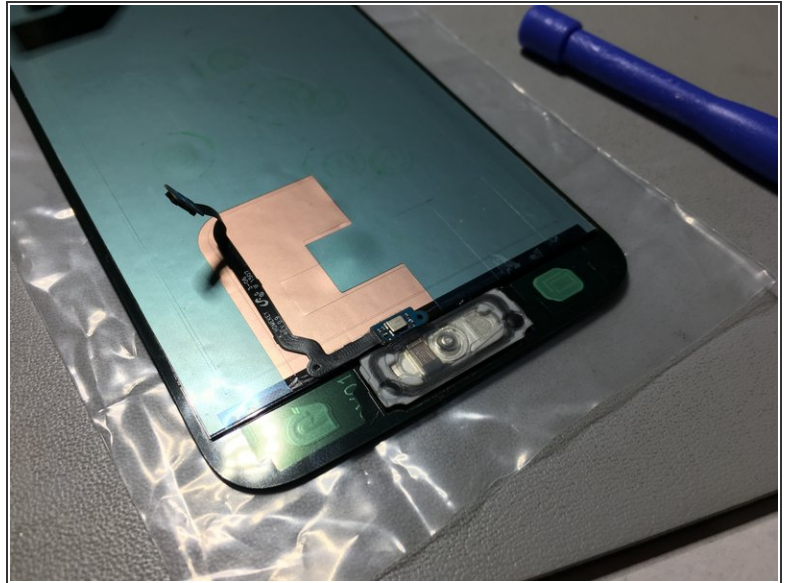
## Step 20 — Home button cable



- My parts supplier sent me an original Samsung (used) home button, however purchasing a new one I recommend the following links:
- AMAZON:  
<https://www.amazon.com/Zettron-Premium-R...>
- EBAY:  
<http://www.ebay.com/itm/301834239369>
- BRANDO:  
<https://shop.brandoo.com/samsung-galaxy-s...>

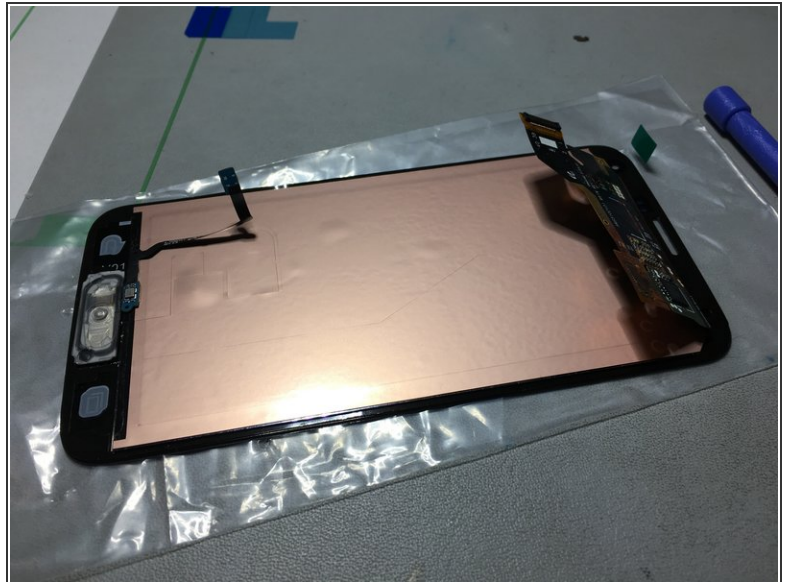
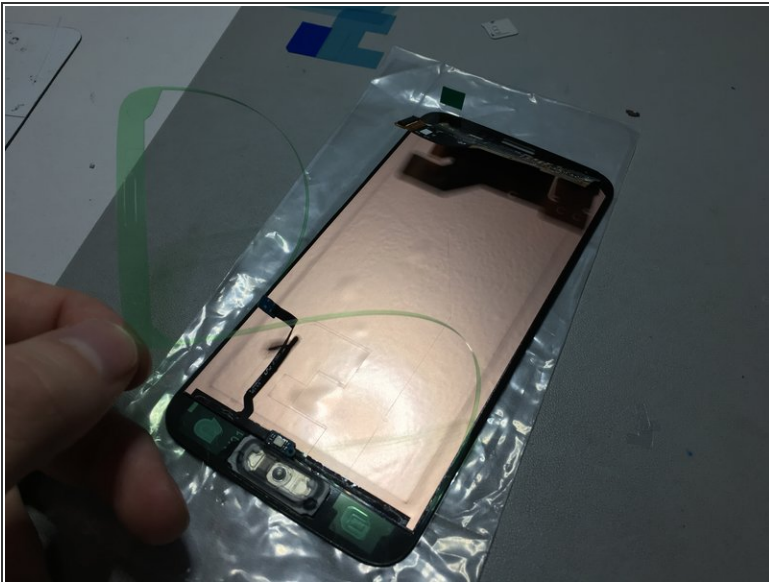


## Step 21 — Attaching the home button



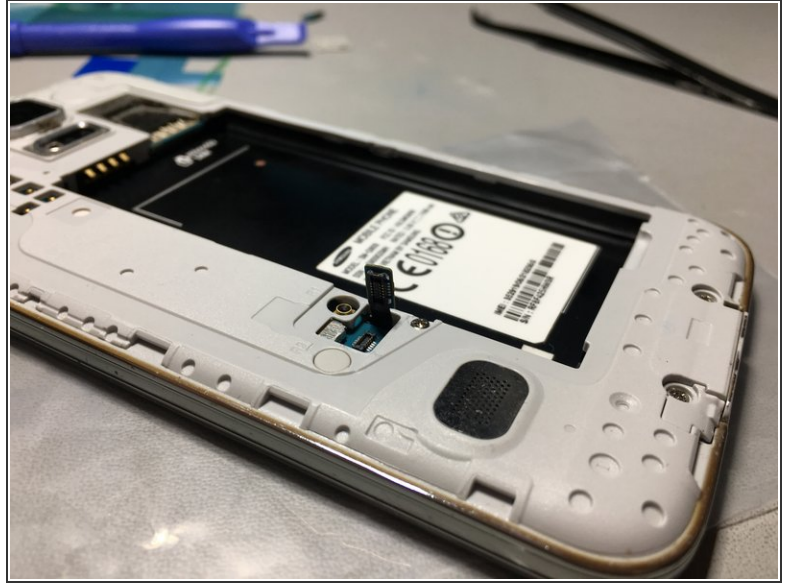
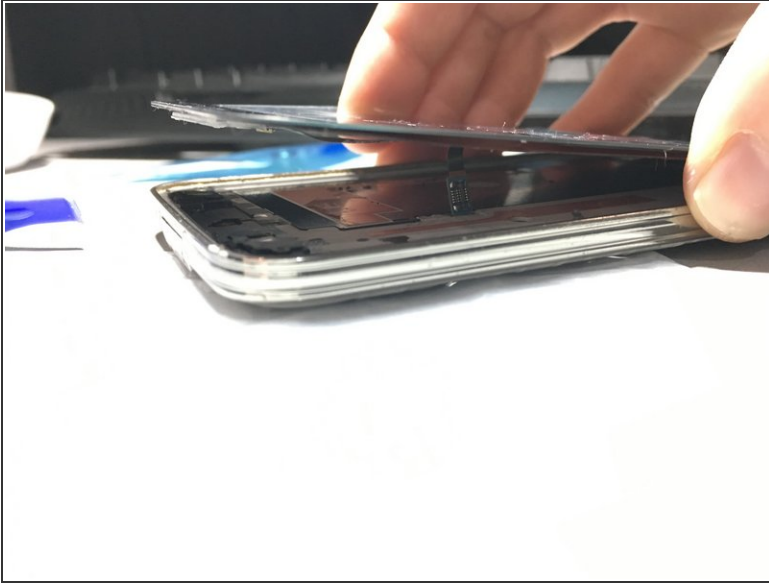
- Attach the home button to the screen assembly. In this guide I am also installing a new screen assembly.

## Step 22 — Preparing the display



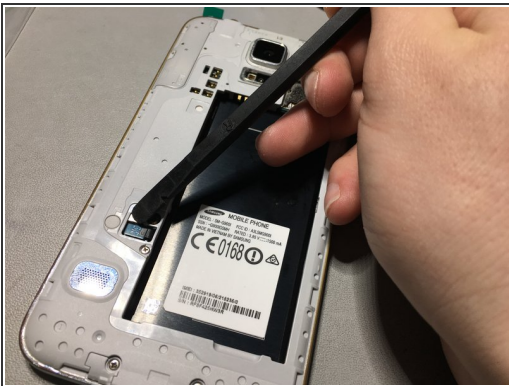
- Prepare your screen assembly by removing adhesive film. If you're not replacing the screen then you can skip this step.

## Step 23 — Display and home button cable



- Connect the display cable.
- Carefully line up the home button cable so that it comes through to the other side.

## Step 24 — Fitting the display



- Plug the home button cable into the socket.
- Stick the screen assembly back down to the rest of the phone.



## Step 25 — Battery



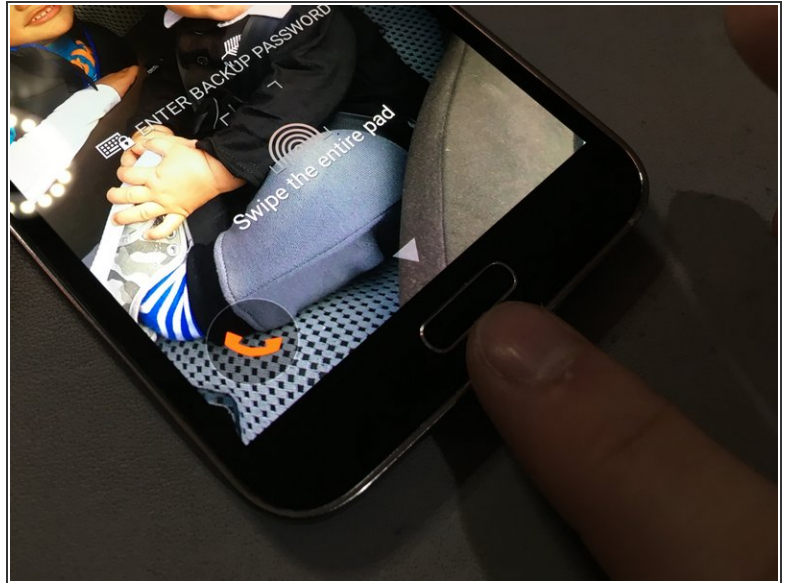
- Reinstall the battery.
- Remember to place the plastic panel back on the phone.

## Step 26 — Back cover



- Press the back cover back onto the phone.

## Step 27 — Power on and test



- Power on the device and test the new fingerprint scanner.

If you have followed this guide correctly you should now have a functional fingerprint reader on your Samsung Galaxy S5.