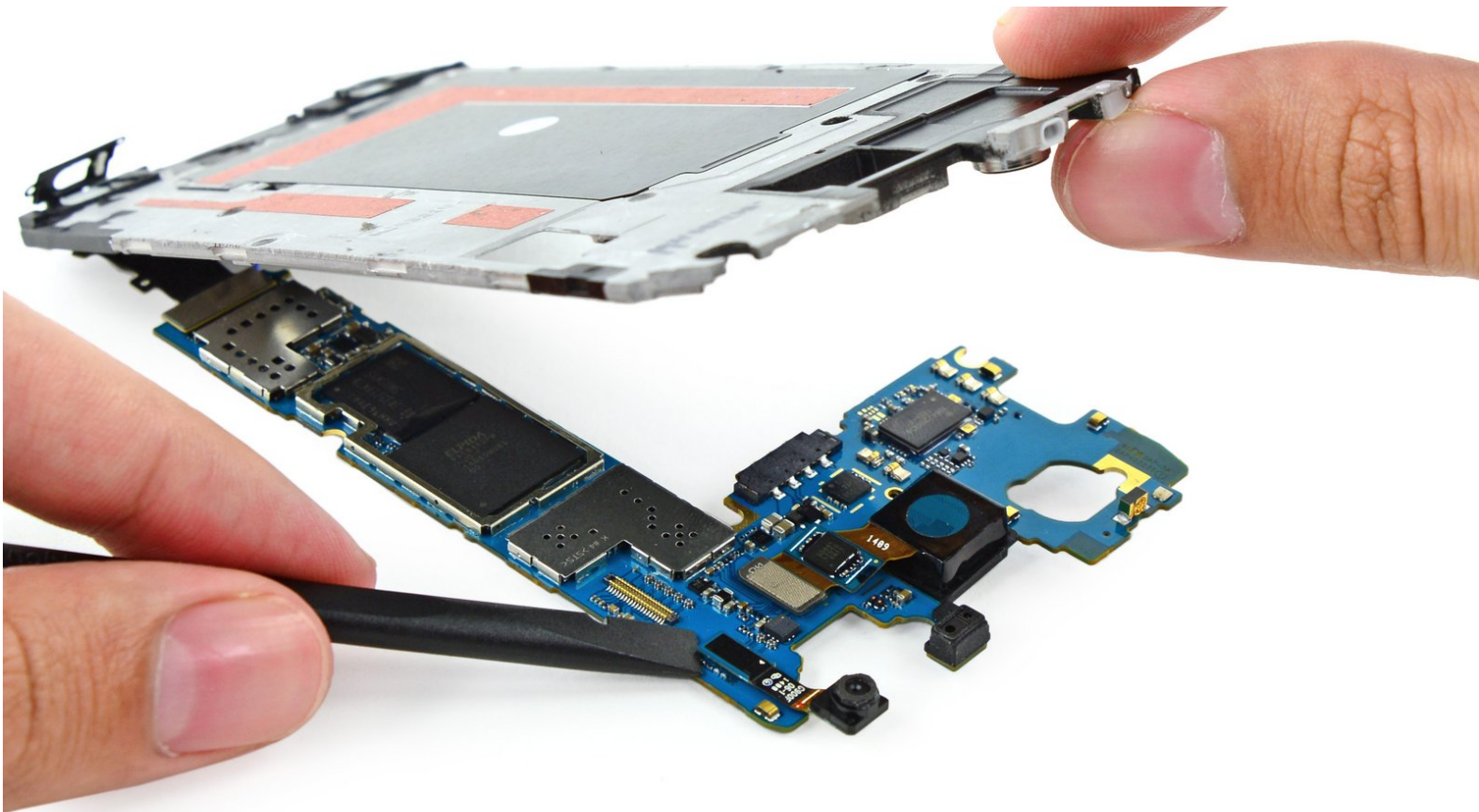




Samsung Galaxy S5 Motherboard Replacement

Prereq to partially remove mobo to get to cameras.

Written By: Sam Goldheart

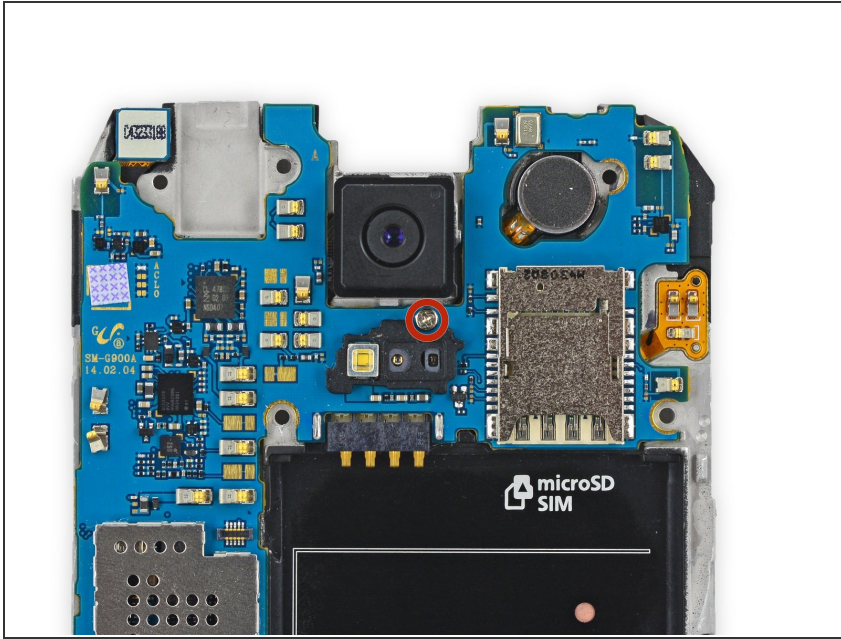




TOOLS:

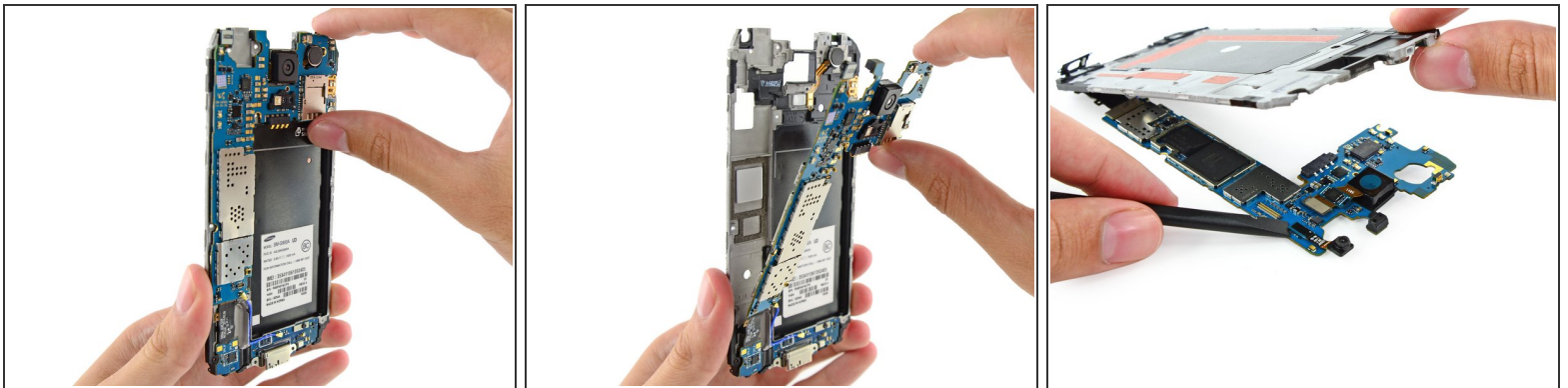
- [Phillips #000 Screwdriver](#) (1)
 - [Spudger](#) (1)
 - [Tweezers](#) (1)
 - [Phillips #00 Screwdriver](#) (1)
-

Step 1 — Motherboard Assembly



- Remove the single 3.0 mm Phillips #00 screw securing the motherboard to the midframe.

Step 2



- Pull, but do **not** remove, the motherboard away from the midframe to allow access to the connectors on the rear.
- ⚠ Do **not** attempt to fully remove the motherboard as it is still attached to the interior midframe by the Micro-USB port daughterboard connector.
- Lay the motherboard on a clean flat surface and support the interior midframe with one hand, leaving the other hand free to work on the motherboard assembly.

To reassemble your device, follow these instructions in reverse order.