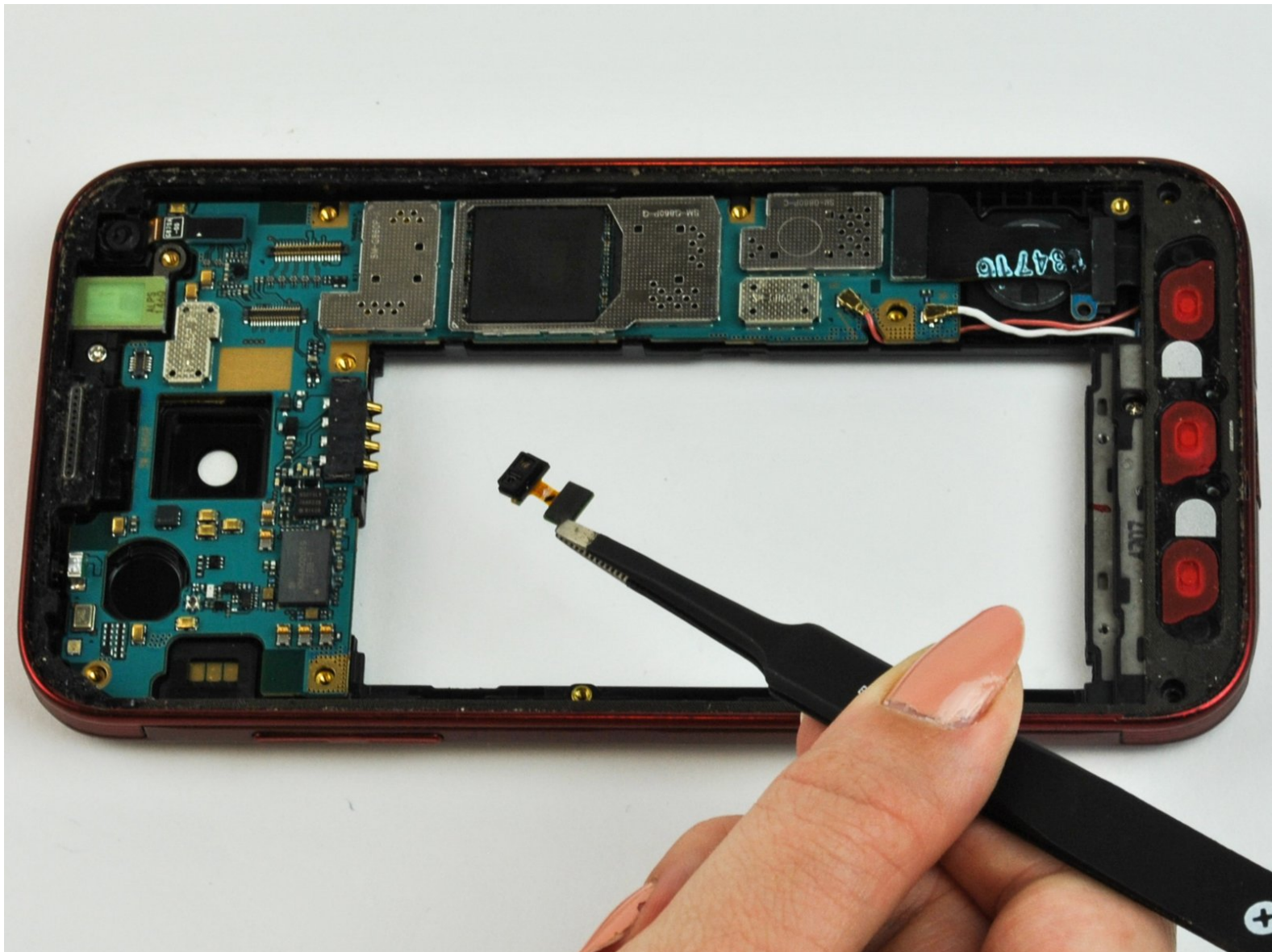




Samsung Galaxy S5 Sport Front Facing Camera Replacement

This guide will show the using how to replace the camera that faces the front of the phone. It is the camera on the same side as the screen.

Written By: Caroline Janiszewski



INTRODUCTION

This guide will show you how to replace the front-facing camera on this device. As with the back-facing camera, this replacement will require most of the phone to be taken apart beforehand.



TOOLS:

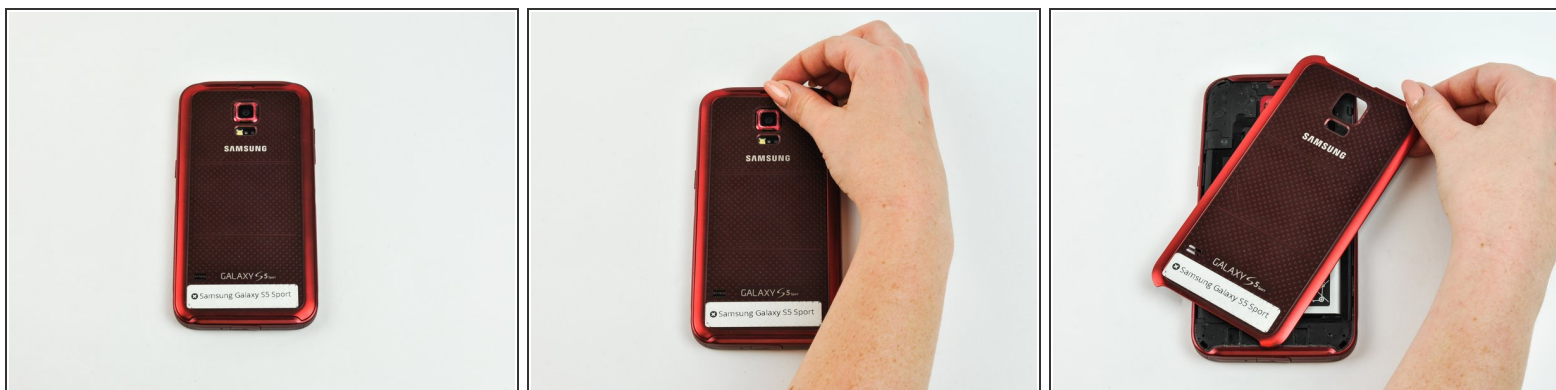
- [Spudger](#) (1)
- [iFixit Opening Tools](#) (1)
- [Heavy-Duty Spudger](#) (1)
- [Heat Gun](#) (1)
- [Phillips #000 Screwdriver](#) (1)
- [Flathead Screwdriver](#) (1)



PARTS:

- [Samsung Galaxy S5 Sport Front Camera](#) (1)

Step 1 — Battery




- Remove the back casing of the phone using the notch located at the top.

Step 2



- Lift up the battery using a plastic spudger or fingernail.

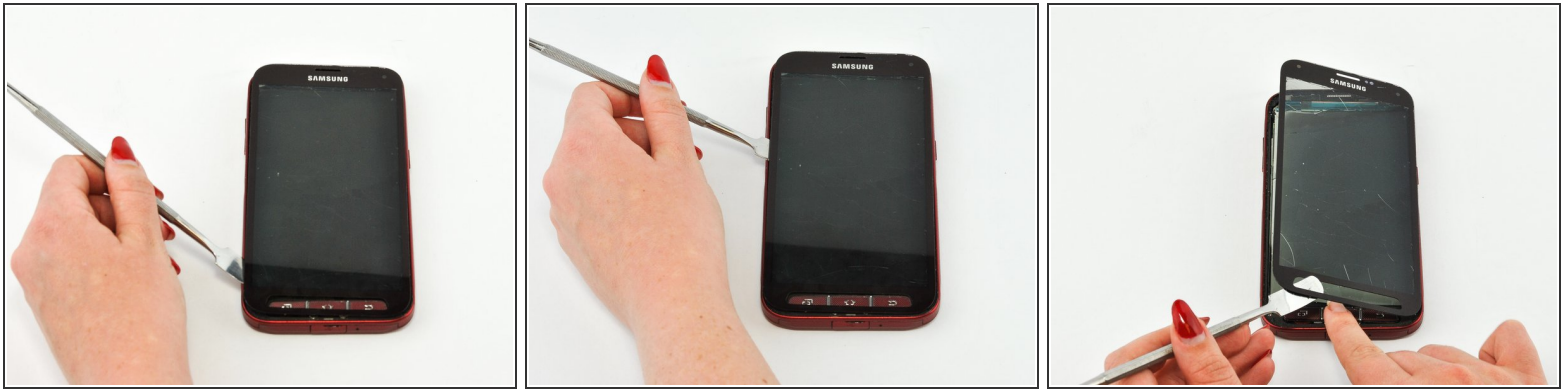
 Damaging the battery may result in physical injury and/or damage to the phone.

Step 3 — Screen



- Turn on the heat gun.
- ⚠ Make sure you don't touch the metallic tip. You will burn yourself.
- Hold the heat gun roughly 6 inches away from the screen of the phone and slowly run the heat around the edge of the screen.
- ⓘ Keep at least 6 inches of distance from the screen. Keep moving the heat around to avoid warping the phone screen or internal parts.

Step 4



- Using a plastic opening tool or spudger, pry up the screen after the adhesive has melted.

⚠ When working with electronics, it's important to choose a tool that's ESD-safe to avoid accidental damage to the device. The metal spudger is great when you need serious prying power, but the regular black nylon spudger or a plastic opening tool should be used whenever possible.

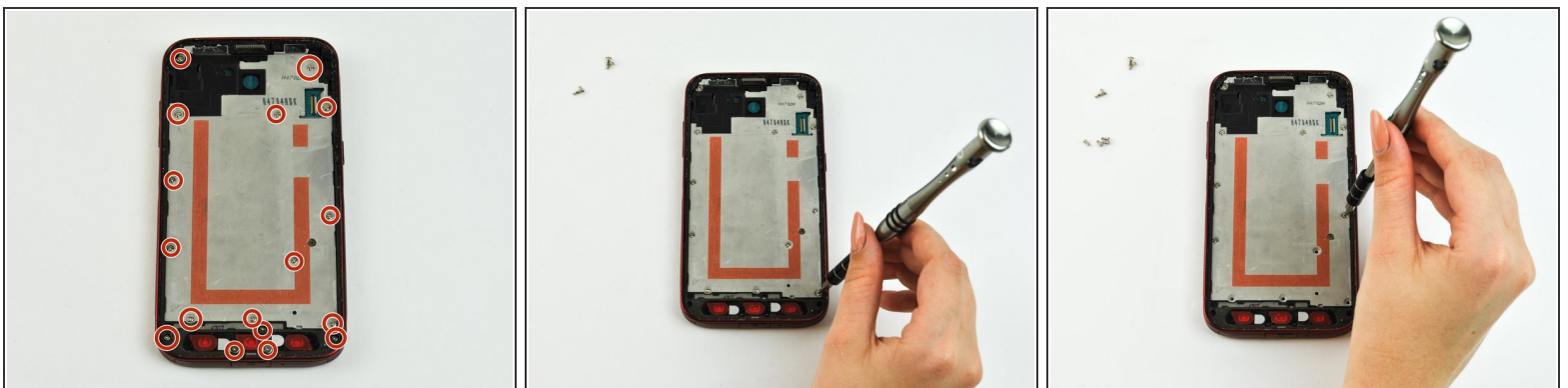
🔧 Because it is a water-resistant phone, the screen cannot be taken apart without breaking.

Step 5



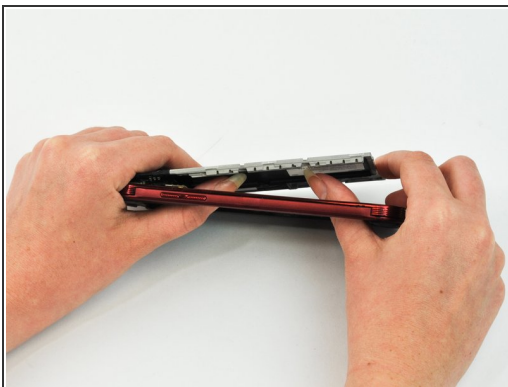
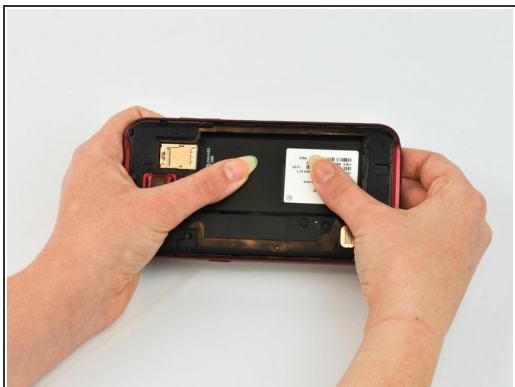
- The plastic cover of the phone may separate from the LCD screen. If so, also remove the LCD screen with the regular nylon spudger.
- ⓘ In the upper right area of the LCD screen, there is a connecting ribbon. Be careful not to rip its connection to the motherboard.
- ⚠ Do not hold the phone too close to your face or eyes. Small glass shards may dislodge or the metal spudger may slip.

Step 6 — Front-Facing Camera



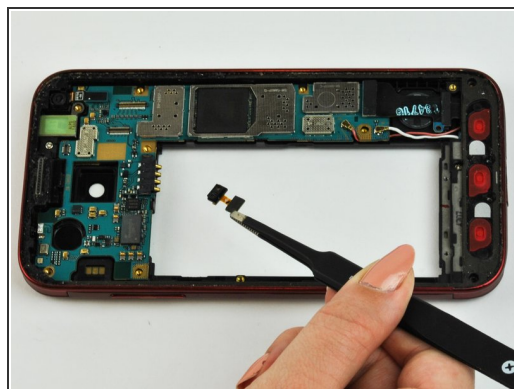
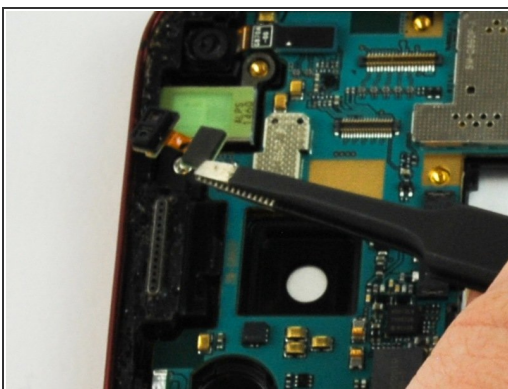
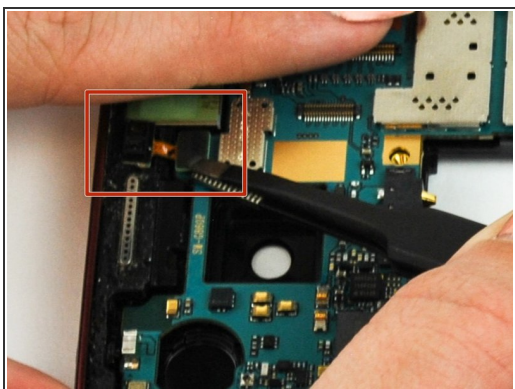
- Remove the screws around the plate

Step 7



- Push the plate out by applying pressure to the battery cavity.

Step 8



- Remove the camera from the plug at the top of the phone with tweezers. It should pop out fairly easily.

To reassemble your device, follow these instructions in reverse order.