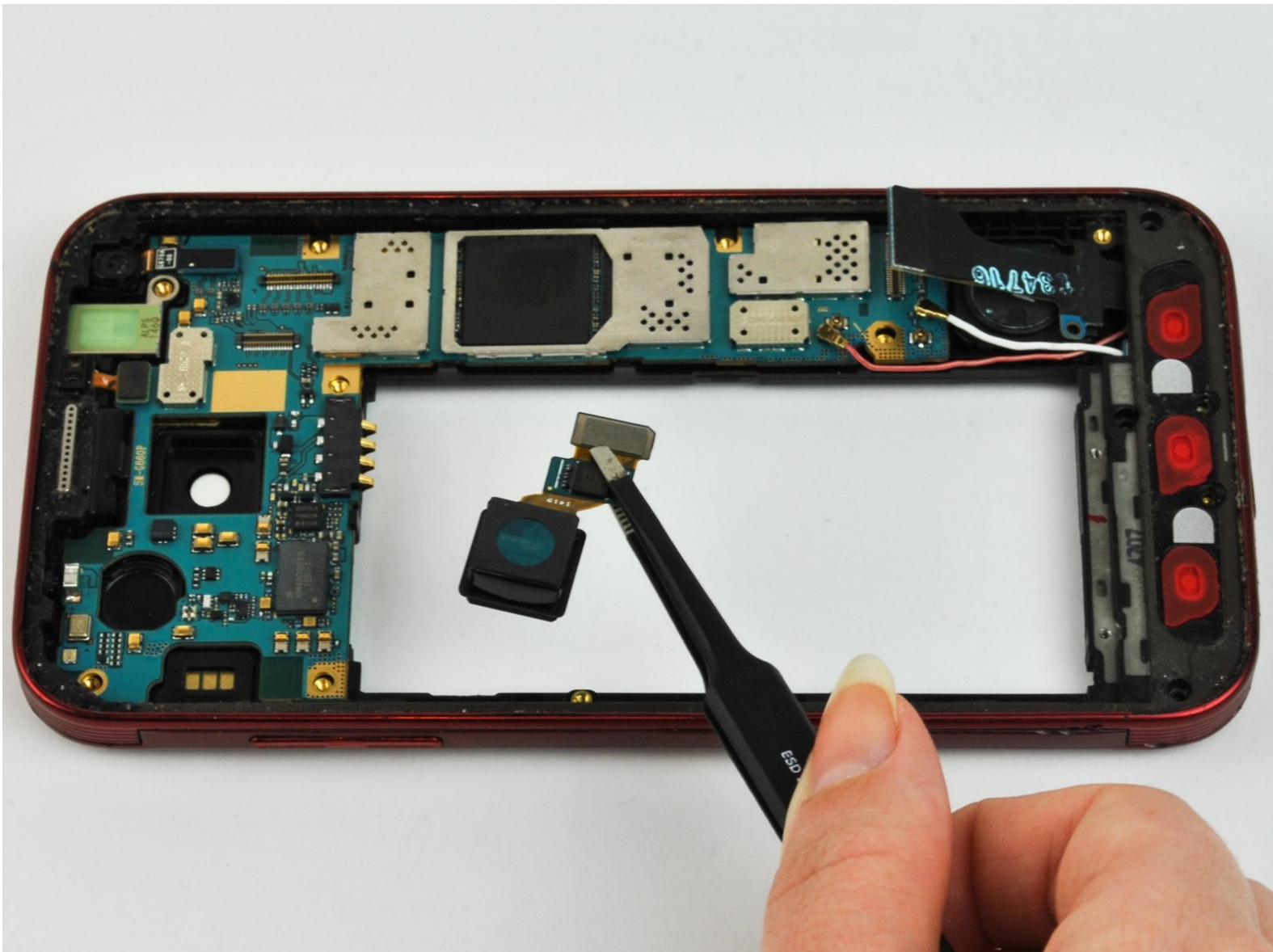




Samsung Galaxy S5 Sport Rear Camera Replacement

This guide will show you how to replace the back facing camera on this device.

Written By: Samantha McGilvray



INTRODUCTION

This guide will show you how to replace the back facing camera on this device. This guide requires removal of the screen, buttons, battery and protective plate. This may mean that to replace this camera, other parts of the device must be replaced as well.



TOOLS:

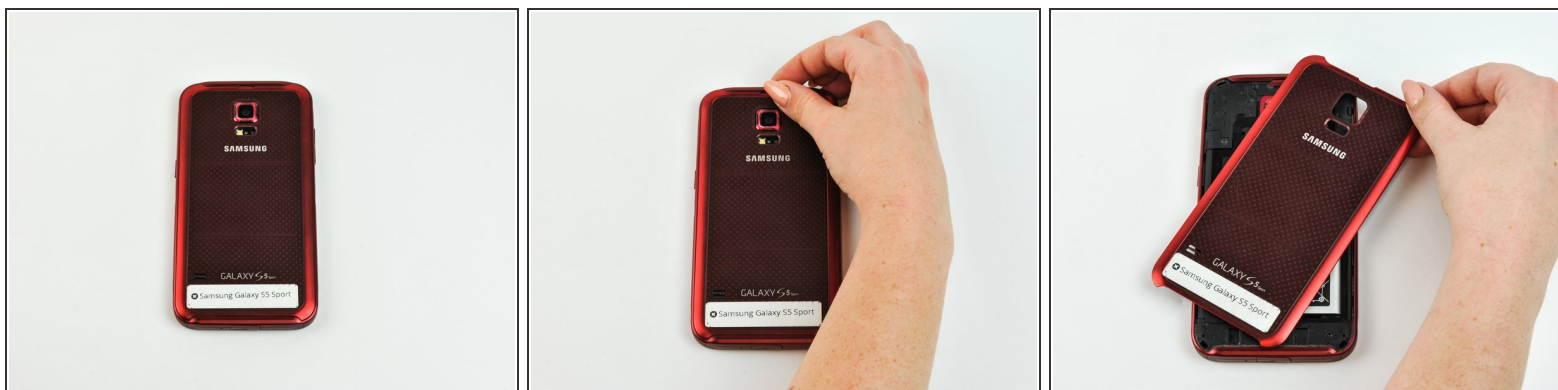
- [Heavy-Duty Spudger](#) (1)
- [Heat Gun](#) (1)
- [Spudger](#) (1)
- [iFixit Opening Tools](#) (1)
- [Tweezers](#) (1)
- [64 Bit Driver Kit](#) (1)



PARTS:

- [Samsung Galaxy S5 Sport Rear Camera](#) (1)

Step 1 — Battery




- Remove the back casing of the phone using the notch located at the top.

Step 2




- Lift up the battery using a plastic spudger or fingernail.

 Damaging the battery may result in physical injury and/or damage to the phone.

Step 3 — Screen

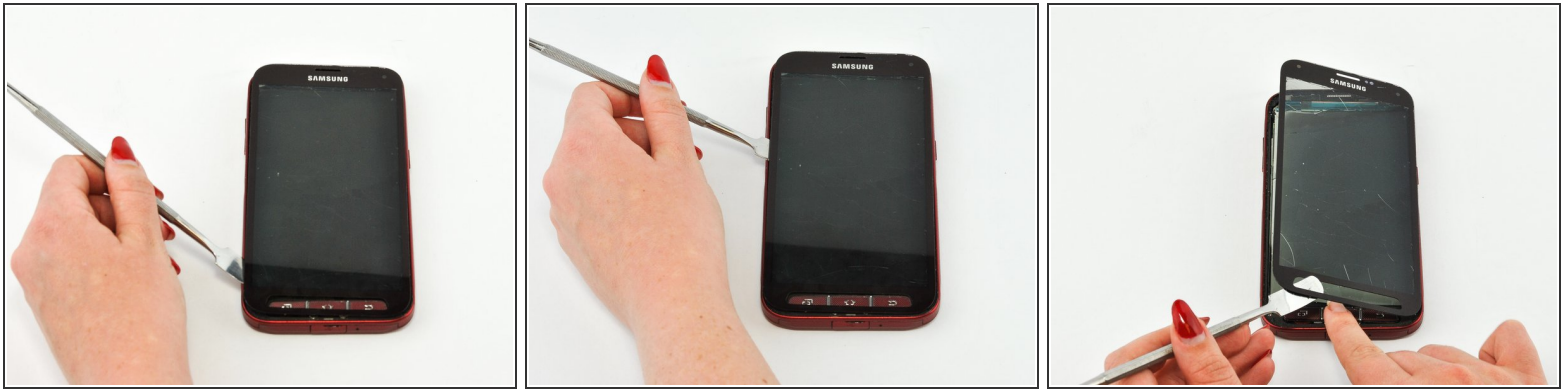


- Turn on the heat gun.


 Make sure you don't touch the metallic tip. You will burn yourself.


- Hold the heat gun roughly 6 inches away from the screen of the phone and slowly run the heat around the edge of the screen.
- ⓘ Keep at least 6 inches of distance from the screen. Keep moving the heat around to avoid warping the phone screen or internal parts.

Step 4



- Using a plastic opening tool or spudger, pry up the screen after the adhesive has melted.

 When working with electronics, it's important to choose a tool that's ESD-safe to avoid accidental damage to the device. The metal spudger is great when you need serious prying power, but the regular black nylon spudger or a plastic opening tool should be used whenever possible.

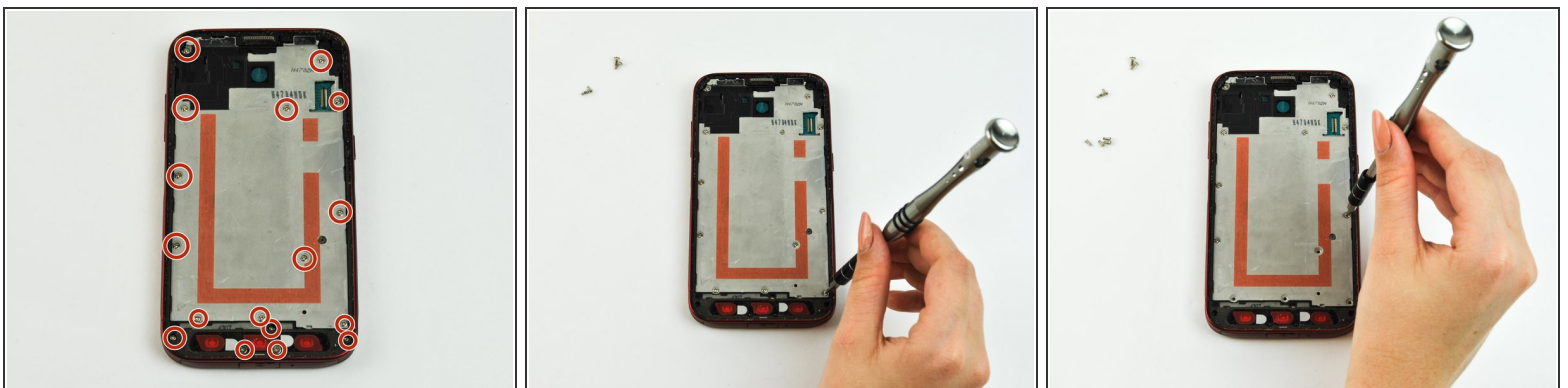
 Because it is a water-resistant phone, the screen cannot be taken apart without breaking.

Step 5



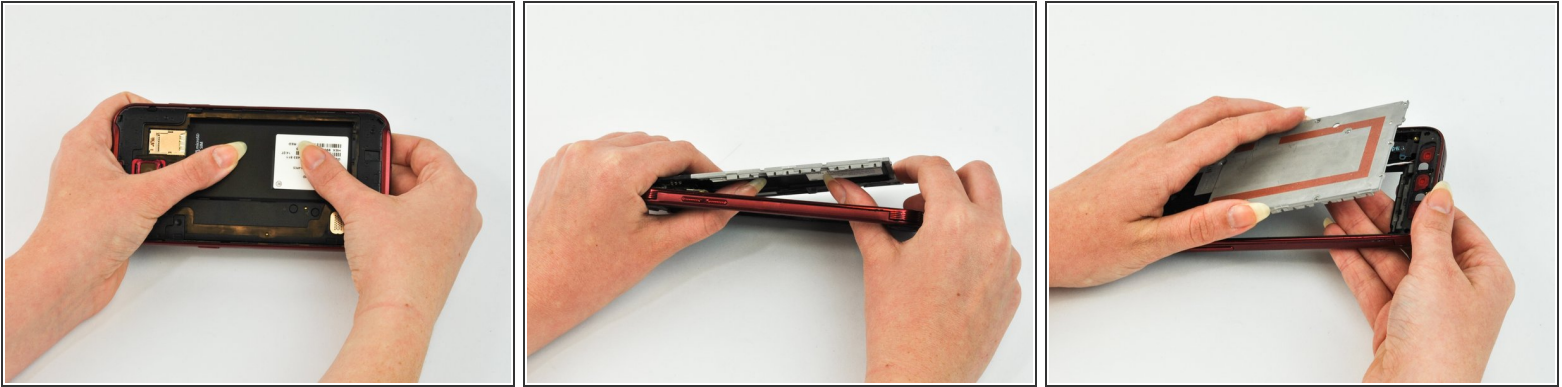
- The plastic cover of the phone may separate from the LCD screen. If so, also remove the LCD screen with the regular nylon spudger.
- ⓘ In the upper right area of the LCD screen, there is a connecting ribbon. Be careful not to rip its connection to the motherboard.
- ⚠ Do not hold the phone too close to your face or eyes. Small glass shards may dislodge or the metal spudger may slip.

Step 6 — Rear Camera



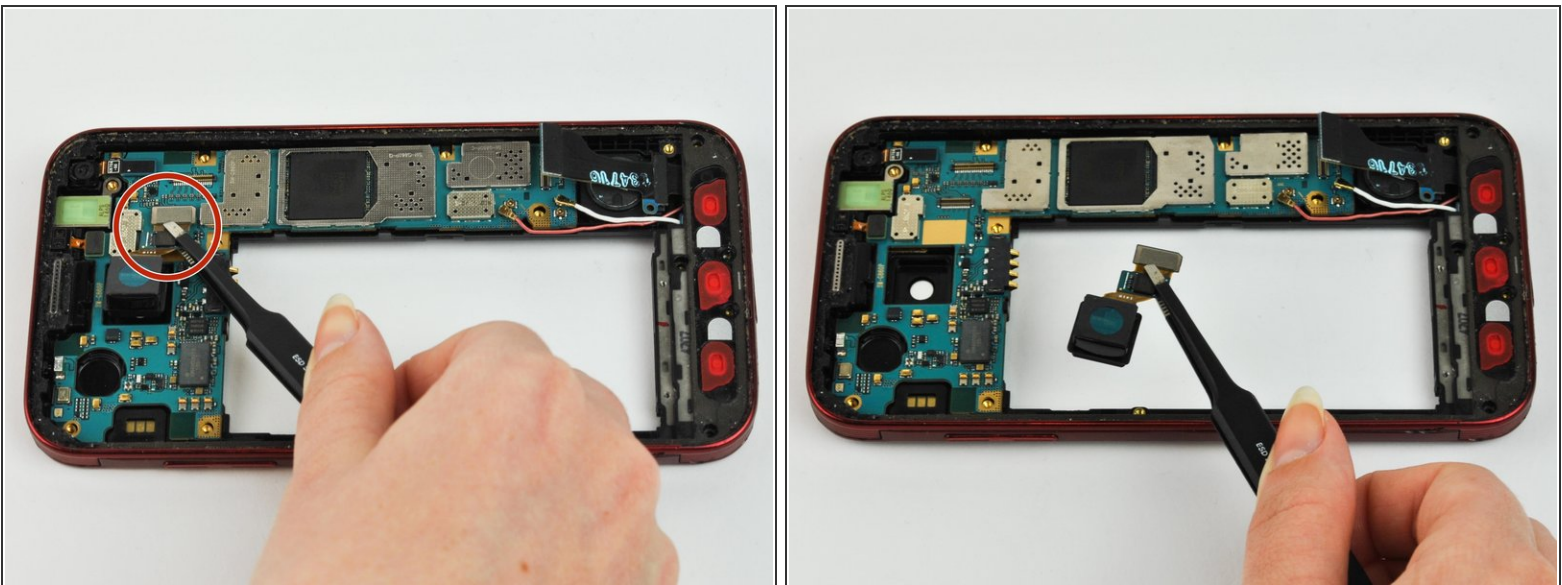
- Remove the seventeen screws around the plate.

Step 7



- Push the plate out by applying pressure to the battery cavity.

Step 8



- Remove the back facing camera from the top of the phone by first disconnecting the ribbon cable from the connector with a spudger or tweezers.

 Apply delicate pressure.

To reassemble your device, follow these instructions in reverse order.