



Samsung Galaxy S5 camera Teardown

Written By: Austin





TOOLS:

- [iFixit Opening Tools](#) (1)
-

Step 1 — Samsung Galaxy S5 camera Teardown



- The Samsung Galaxy S5 camera will be torn down in this guide.

Step 2



- After removing the black tape, we are left with a single clip on each side of the camera.
- Remove the plastic bezel.

Step 3



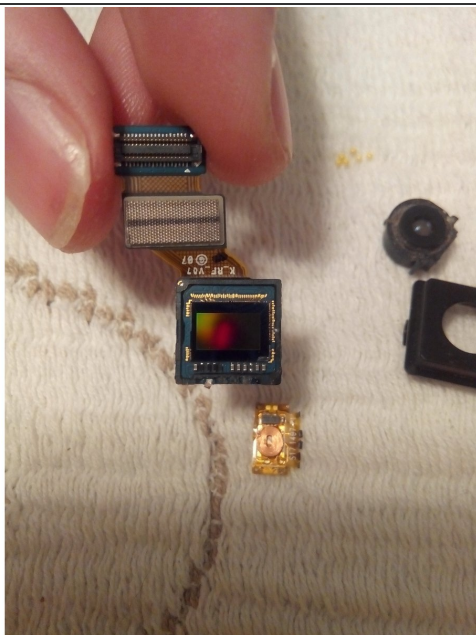
- Once the plastic bezel has been removed, we can take out the lens assembly.
- Those tiny yellow spheres are responsible for bringing images into focus.

Step 4



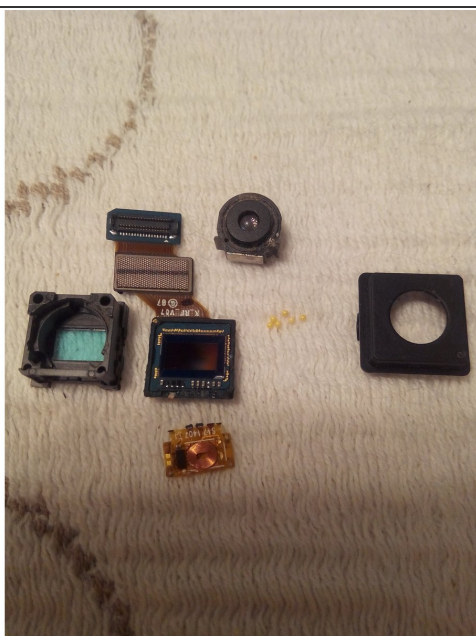
- All six yellow spheres have been extracted.

Step 5



- We must now separate the blue film and casing from the camera's sensor. This is done by wedging an x-acto knife in between the sensor board and the casing.

Step 6



- With the camera fully torn down, we must now look over what it is made of.

Step 7



- Hi.