



Samsung Galaxy S6 Active Digitizer/LCD Screen Assembly Replacement

This guide will show you how to replace the Digitizer/LCD screen assembly on your Samsung Galaxy S6 Active.

Written By: Corey Lehman

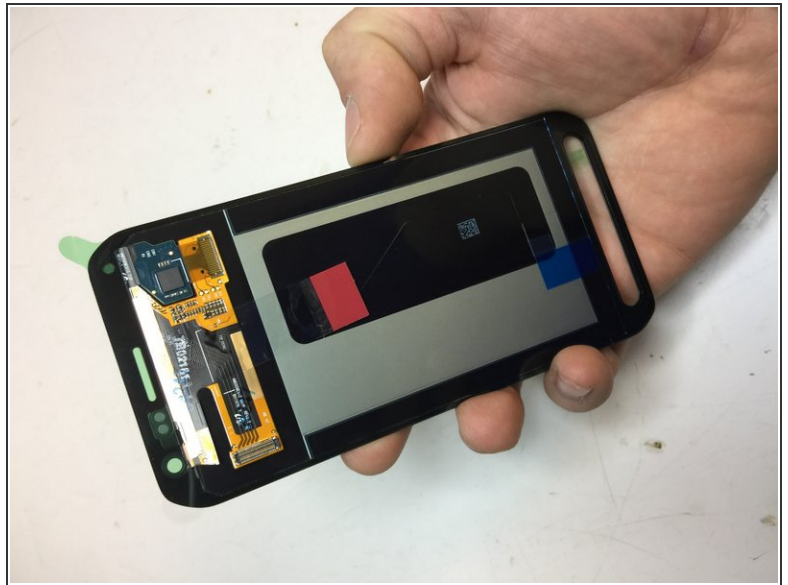




TOOLS:

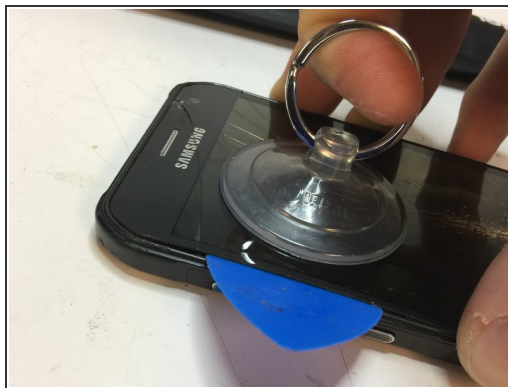
- [iOpener Kit](#) (1)
 - [Heat Gun](#) (1)
 - [64 Bit Driver Kit](#) (1)
-

Step 1 — Tools Required



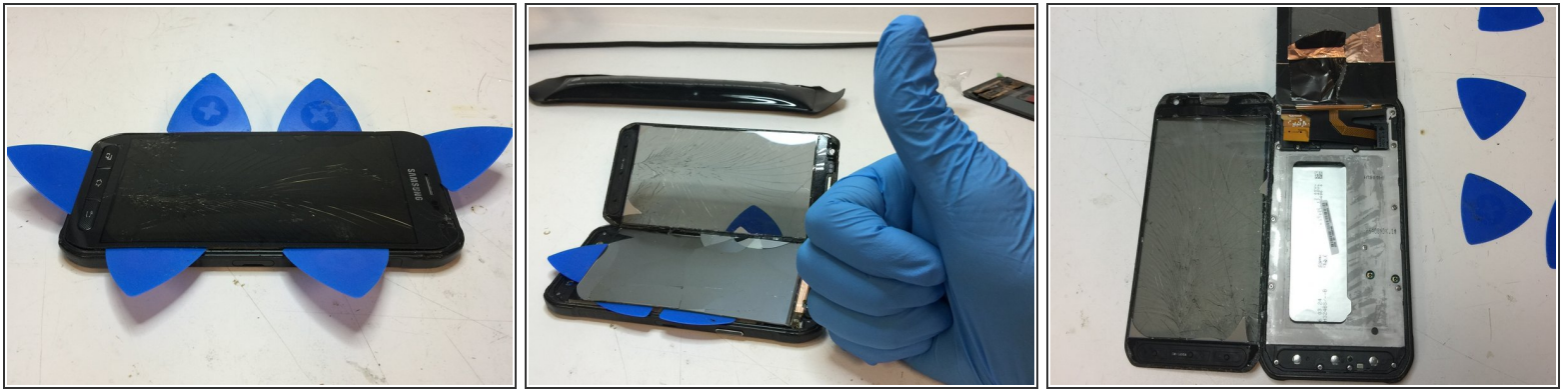
- Gather all tools needed.
- This is a perfect opportunity for us to test out our [iOpener Kit](#) and our [64-Bit Driver Kit](#).

Step 2 — Applying Heat



- Lay the iOpener pad across the phone. We'll start near the top since the bottom is cracked more.
- Once the screen is heated up, use a suction cup and carefully pull up on the screen.
- Gently work an opening pick into the gap between the screen and the phone.
- Keep working around the edges by inserting more opening picks and applying more heat if needed.

Step 3 — Separating the Assembly



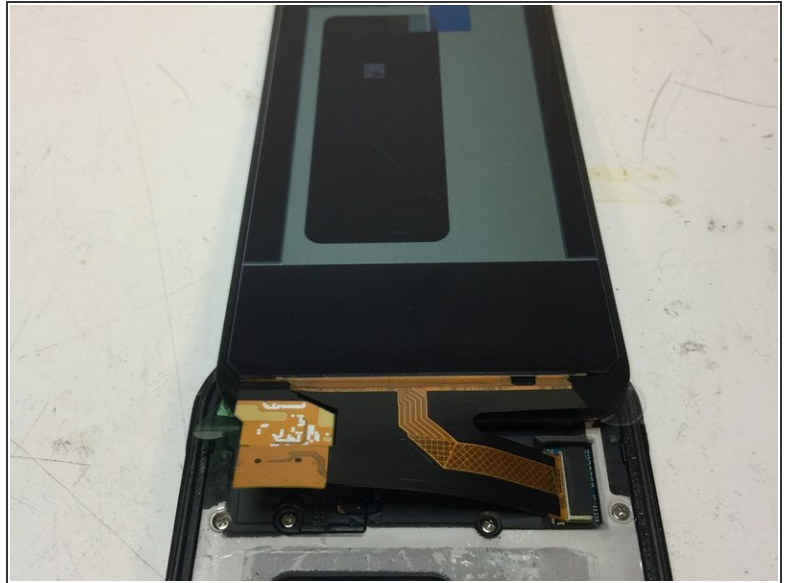
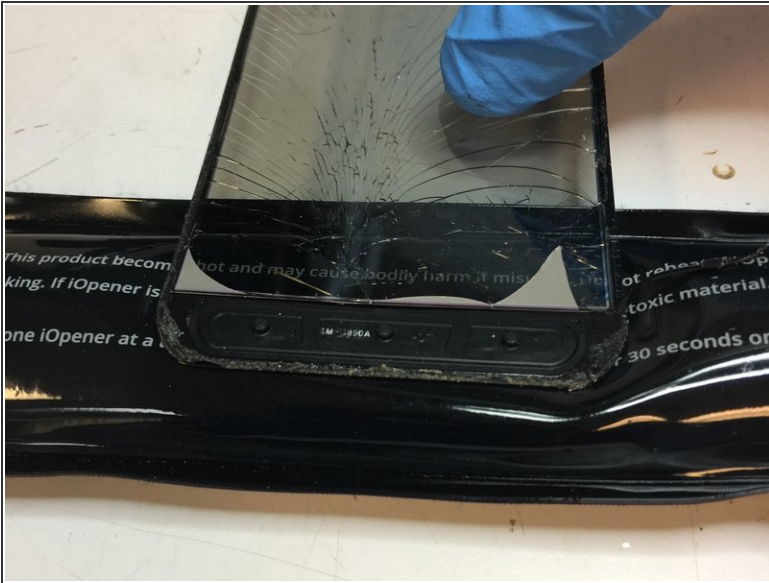
- After creating enough of a gap between the screen and the phone, you will see that the LCD is held to the housing with very strong adhesive, a Samsung favorite.
- As much as we tried, we could not prevent the already cracked screen from cracking further. It is possible to separate the screen assembly from the phone, but you'll need some heat and patience to slowly work it loose (proven by @cclarkcarroll, <http://pixady.com/image/sm9/>) These screens are EXTREMELY thin and fragile!
- Gloves are advised as these thin LCDs can be nasty when they start to shatter.
- The digitizer will likely separate from the LCD during removal so do not panic.

Step 4 — Disconnecting the Cracked Screen Assembly



- Once the screen is separated from the phone, you will need to flip it vertically to gain access to the screen connector.
- The connector is hidden under a plastic cover that can be popped off with a plastic pry tool.
- After removing the cover, you can carefully remove the screen connector from the phone board.

Step 5 — Connecting the New Assembly



- After you've removed the cracked screen assembly, you will need to apply heat to the buttons to transplant them to the new assembly.
- Remove the adhesive from the new assembly and carefully line up the buttons. They won't move easily once they're adhered.
- Connect the new screen assembly to the board and install the plastic cover.
- At this point, we recommend testing the phone before adhering the new screen into place.

Step 6 — Finishing Touches



- After testing that the new screen assembly works properly, peel off the adhesive cover and carefully line up the screen.
- Gently press around the screen to ensure a proper seal.
- Enjoy your phone once more!

To reassemble your device, follow these instructions in reverse order.