



Samsung Galaxy S6 Edge Motherboard Removal

prereq only

Written By: Sam Goldheart



INTRODUCTION

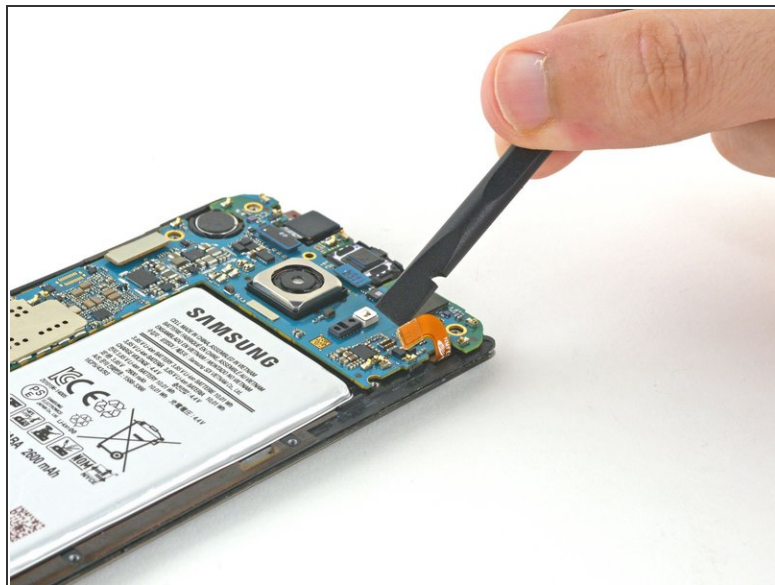
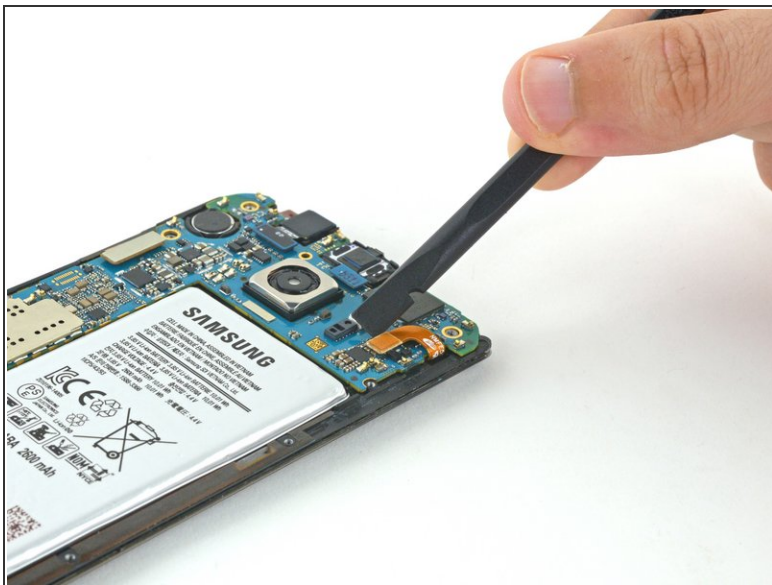
prereq only



TOOLS:

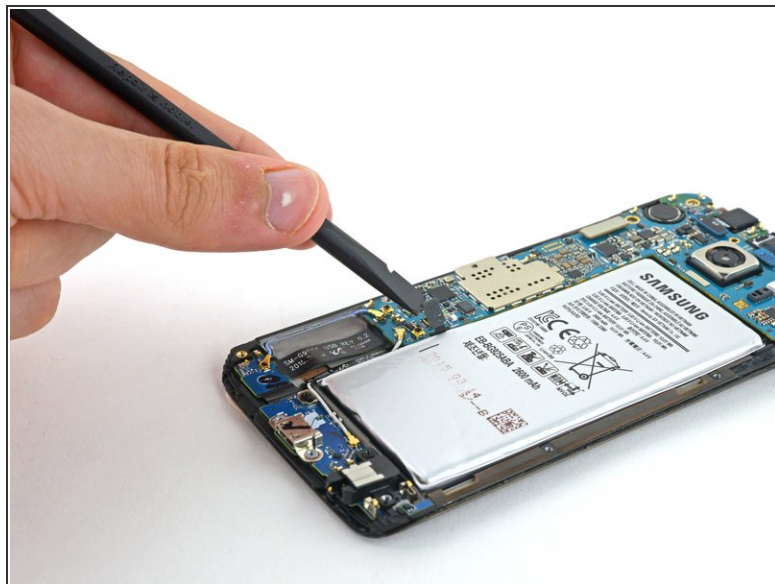
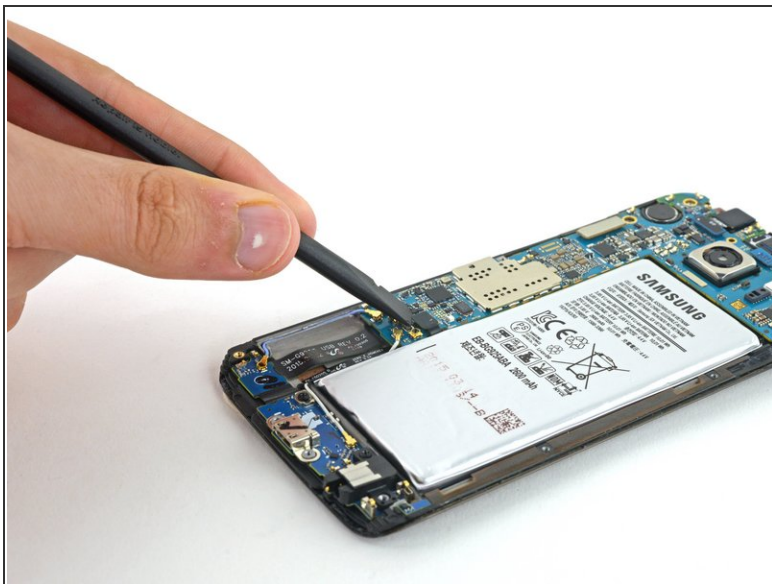
- [SIM Card Eject Tool](#) (1)
 - [iOpener](#) (1)
 - [iFixit Opening Picks set of 6](#) (1)
 - [Phillips #00 Screwdriver](#) (1)
 - [Spudger](#) (1)
 - [Precision Tweezers Set](#) (1)
 - [Suction Handle](#) (1)
-

Step 1 — Motherboard Removal



- Using the flat end of the spudger, disconnect the battery ribbon cable from the motherboard.

Step 2



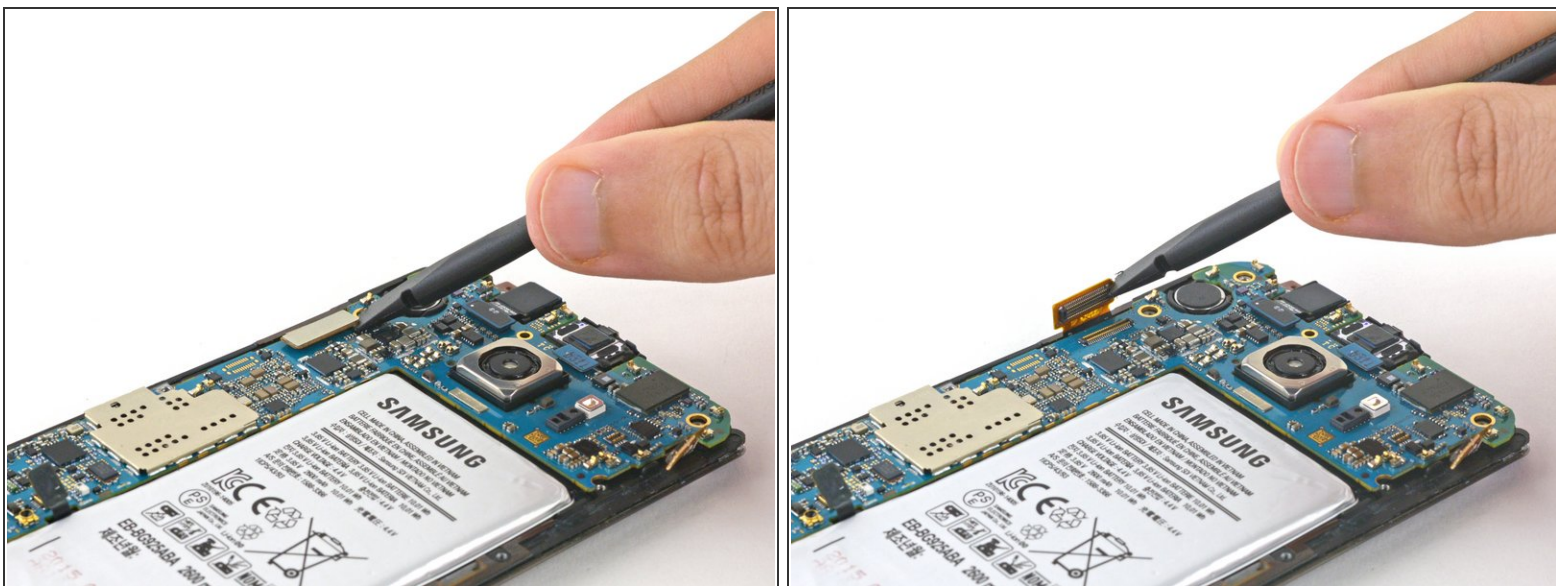
- Disconnect the home button ribbon cable from the motherboard.

Step 3



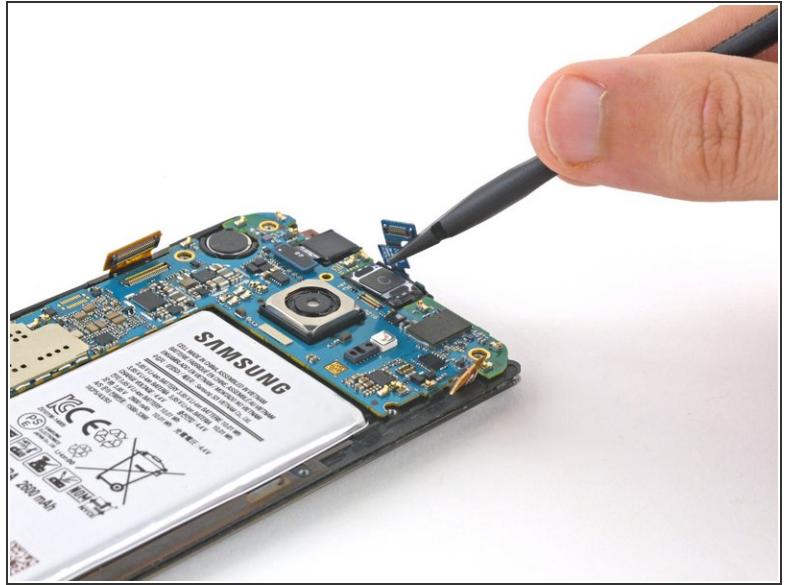
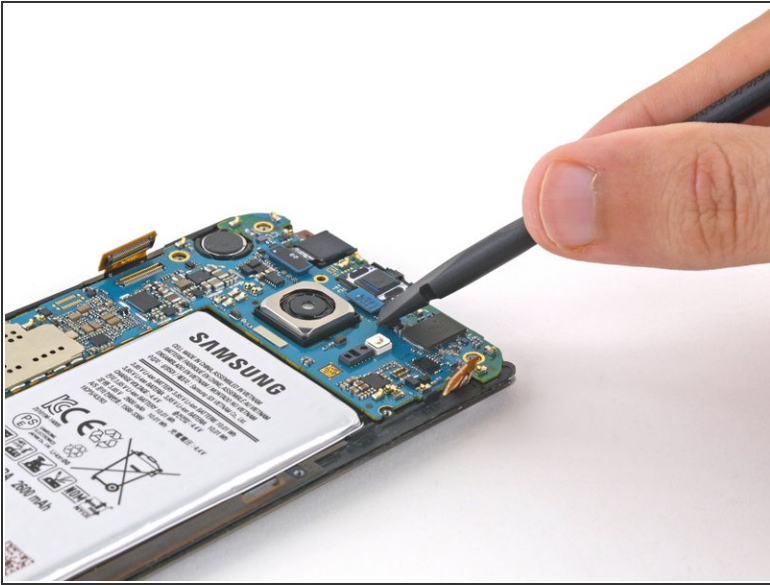
- Use the pointed end of a spudger to disconnect the two antenna interconnect cables from the motherboard.

Step 4



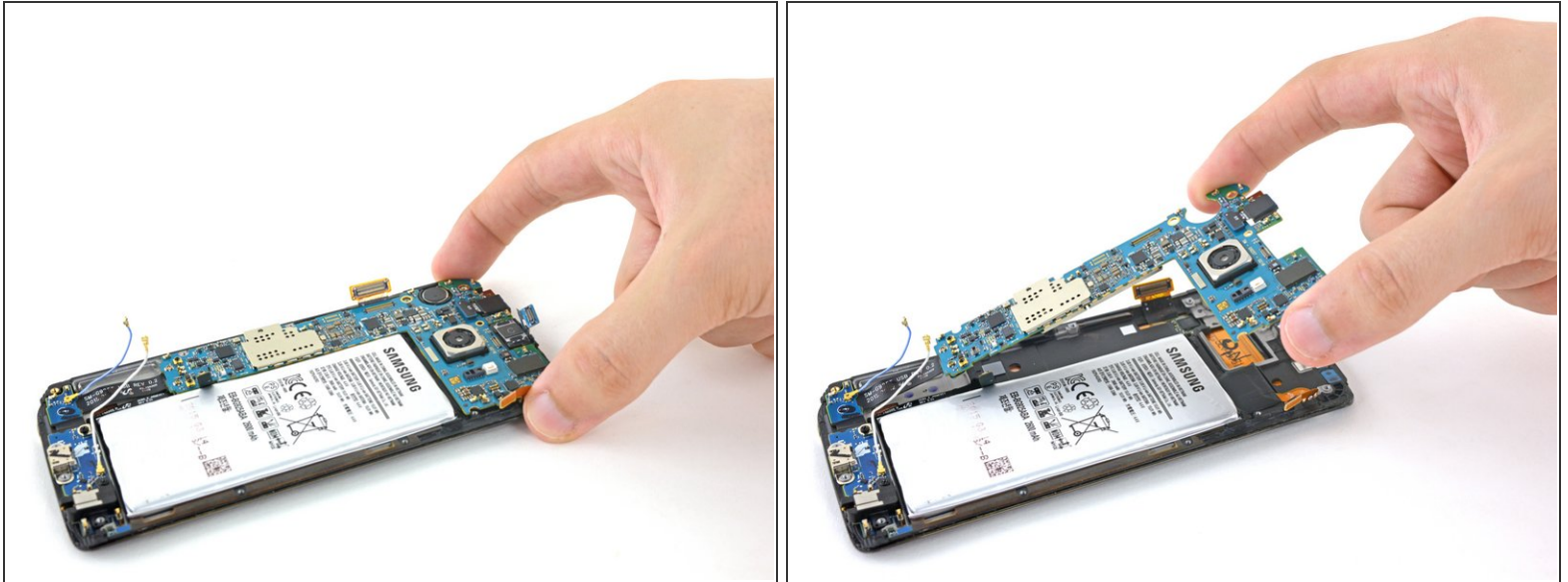
- Disconnect the display ribbon cable from the motherboard using the flat end of the spudger.



Step 5



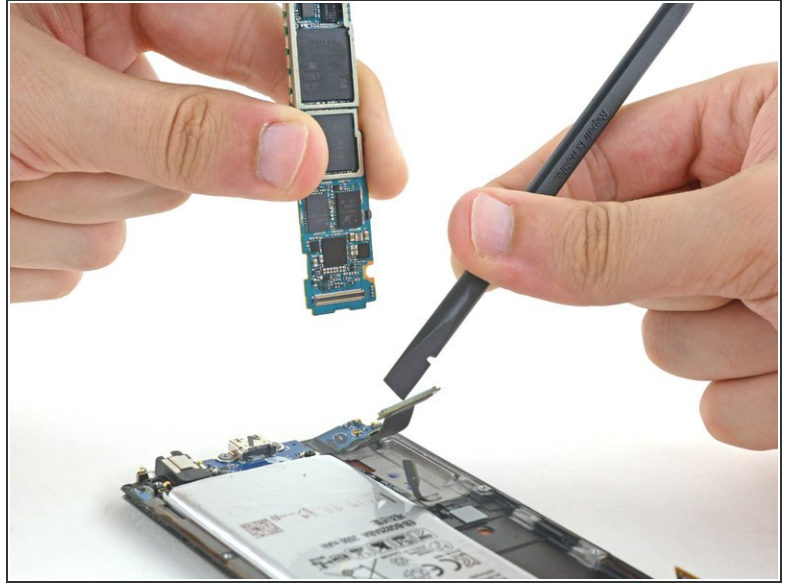
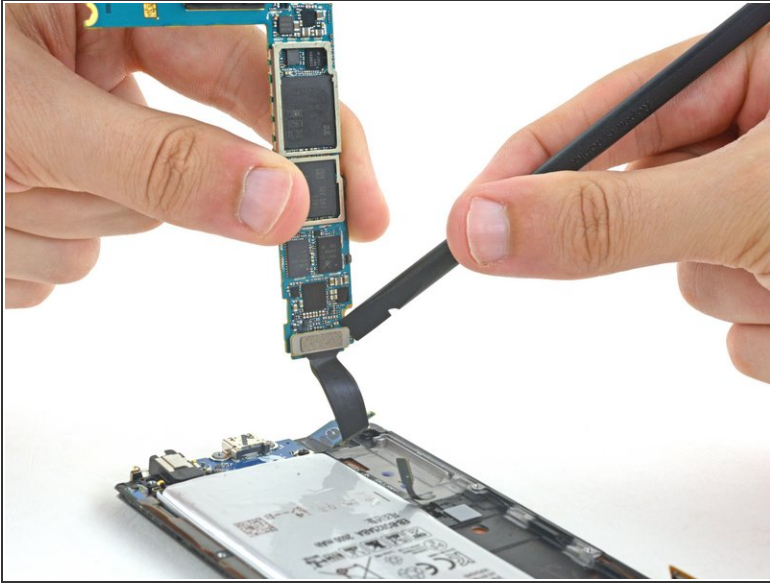
- Disconnect the earpiece ribbon cable from the motherboard.

Step 6



-  The motherboard is an ESD sensitive component and should be handled with care. iFixit recommends using a anti-static bracelet whenever handling components of this nature to avoid damage.
- Grip the motherboard on both edges toward the top of the device.
-  Do not lift the motherboard all the way out in this step; the ribbon cable on the underside needs to be disconnected first.
- Lift the motherboard up and away from the display, taking care not to put too much stress on the daughterboard ribbon cable.

Step 7



- Disconnect the daughterboard ribbon cable from the underside of the motherboard.

To reassemble your device, follow these instructions in reverse order.