



Samsung Galaxy S6 Edge Rear Camera Lens Glass Replacement

Replacing the Rear camera lens glass after having been shattered.

Written By: shicks



INTRODUCTION

So one day after only owning my new Galaxy S6 Edge for a month I noticed I was getting fuzzy pictures. I turned the phone and saw that the glass over my camera was shattered.



TOOLS:

- [iOpener Kit](#) (1)
- [vacuum handling tool \(optional\)](#) (1)



PARTS:

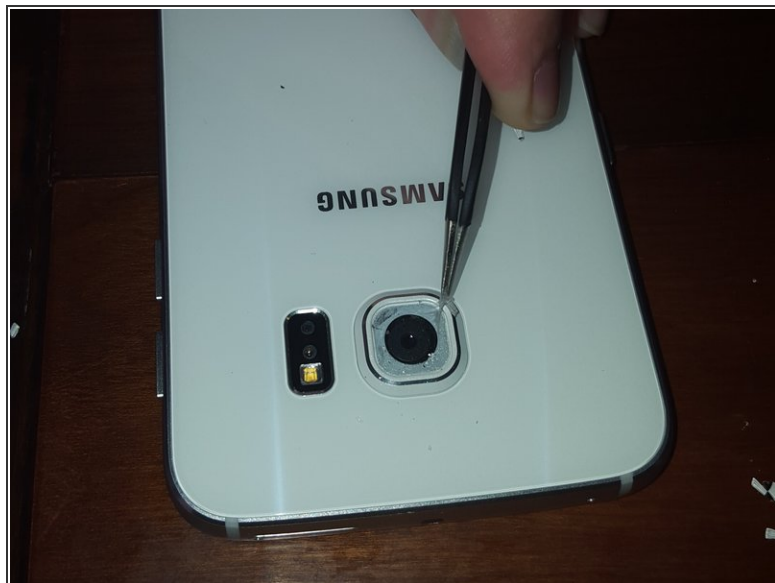
- [Galaxy S6 Edge Rear Camera Bezel Lens Cover](#) (1)

Step 1 — Removing the shattered glass



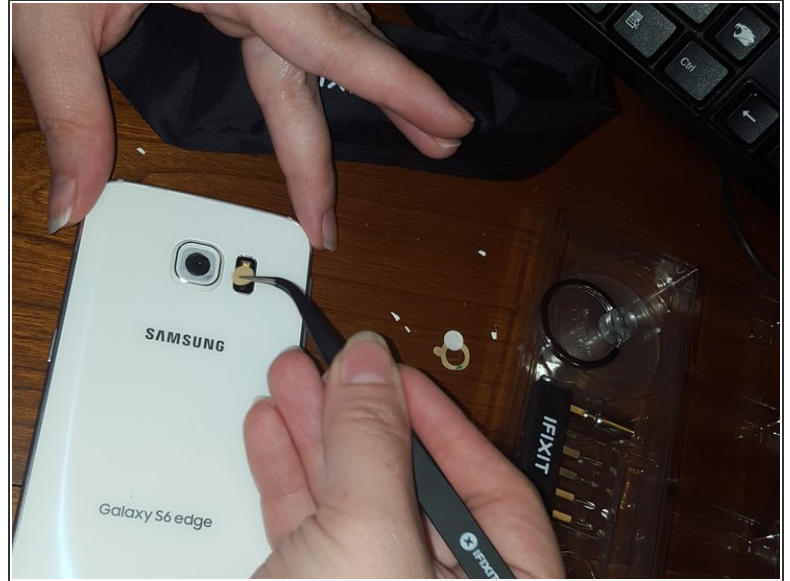
- Be careful when removing the shattered glass. You want to make sure the pieces don't fall inside and get trapped next to the camera. You also want to make sure that the lens on the camera itself is not in need of replacement. To do that you would need to remove the back cover and fortunately, I did not have to do this to complete my repair.

Step 2 — A Sticky Situation



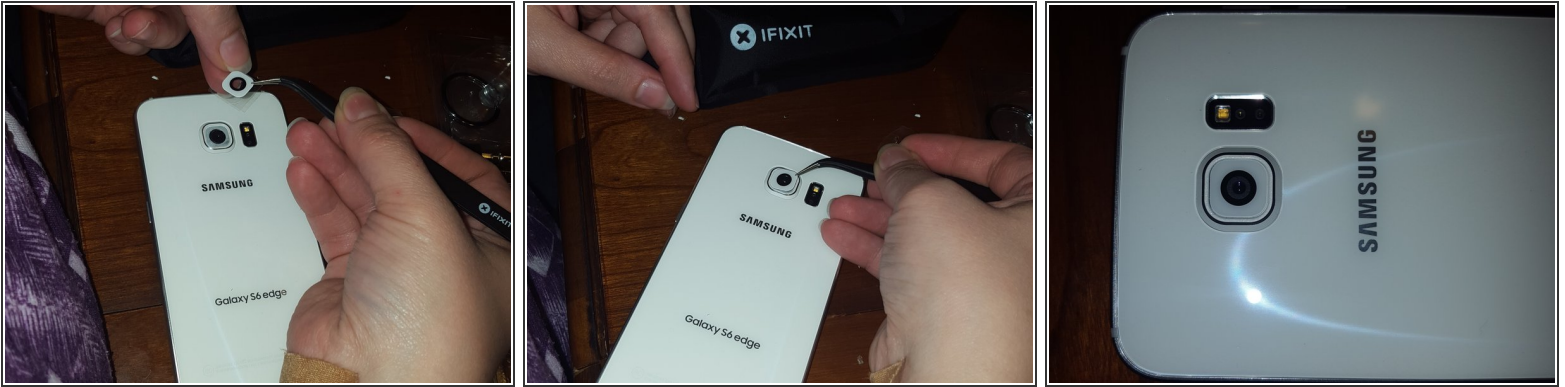
- After clearing all the glass, you will want to remove as much as the old glue as possible. A small set of tweezers like what you get with the iOpener set is perfect. I went ahead and used the iOpener to make the glue a little easier to pull right off.

Step 3 — Sticking the Landing



- You'll want to make sure when you purchase your replacement glass that you get a new piece of glue tape to secure the glass. No matter how careful you are the old glue will not be sticky enough or lay flat enough for your new glass to stay securely flush with the camera dome.
- I chose to keep the center section in when applying the glue tape. This was to prevent the tape from accidentally getting stuck to the camera. I could have instead removed the circle before placing the tape down and this would have prevented me from having to awkwardly pry it out afterward. Pick your own battle...

Step 4 — The Eagle has Landed



- Next carefully remove the protective plastic from BOTH sides of your replacement glass. It's easy to forget the backside. I almost stuck the plastic to my phone. Doing so would have let my new glass come right off.
- After peeling the plastic off, gently grip the glass with the tweezers or small suction gripping tool and place inside the camera dome. Firmly press into place making sure the edge is flush if not slightly lower than the edge of the dome.
- I wiped my glass clean and let the warm iOpener sit on top to warm the glue. I have no idea if this resulted in a firmer grip after cooling, but it seemed to have made the glass more level.
- So comes the end of my first phone repair and thus this tutorial. I hope I made someone a little less trepidatious about doing this repair themselves!

<http://www.witrigs.com/oem-camera-glass-...>

All set!