



Samsung Galaxy S6 Edge Rear Glass Adhesive Replacement

Replace the adhesive on your Galaxy S6 Edge rear glass panel to close it back up after a repair.

Written By: Sam Goldheart



INTRODUCTION

Removing the rear glass panel from your Galaxy S6 Edge destroys the adhesive holding it in place. Follow this guide to replace the adhesive tape on your Galaxy S6 Edge rear glass. Most adhesive strips will come packaged as shown, although the film dimensions and color may vary.

Before beginning, we recommend you remove any residual adhesive from the glass panel using a q-tip and solvent such as isopropyl alcohol.

This guide was performed on a Samsung Galaxy S6 (not Edge) but the procedure is exactly identical. Be sure that you buy S6 Edge adhesive, and that it matches the adhesive you pulled off of the rear glass, as it may differ from the adhesive shown in this guide.



TOOLS:

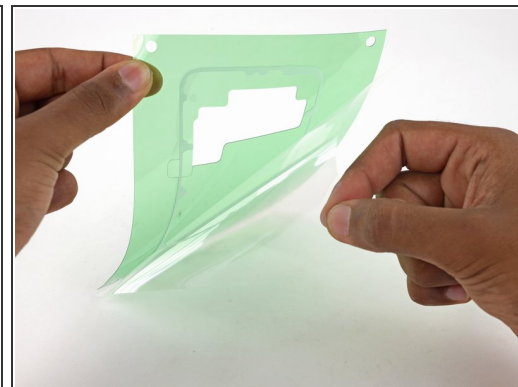
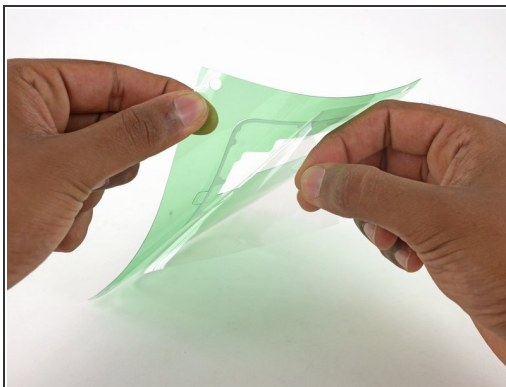
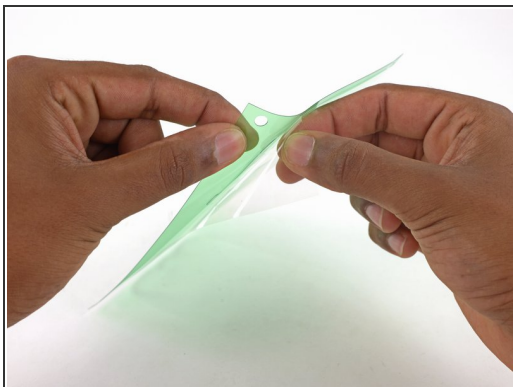
- [X-ACTO Knife](#) (1)
- [Tweezers](#) (1)



PARTS:

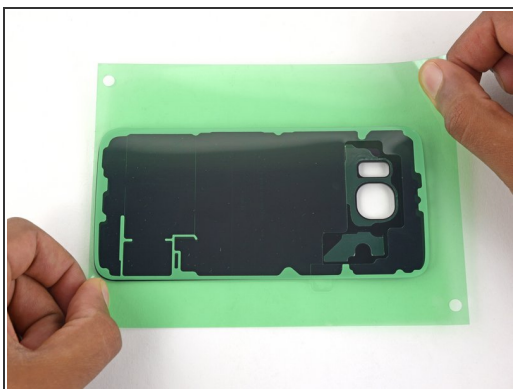
- [Galaxy S6 Edge Rear Cover Adhesive](#) (1)

Step 1 — Rear Glass Adhesive



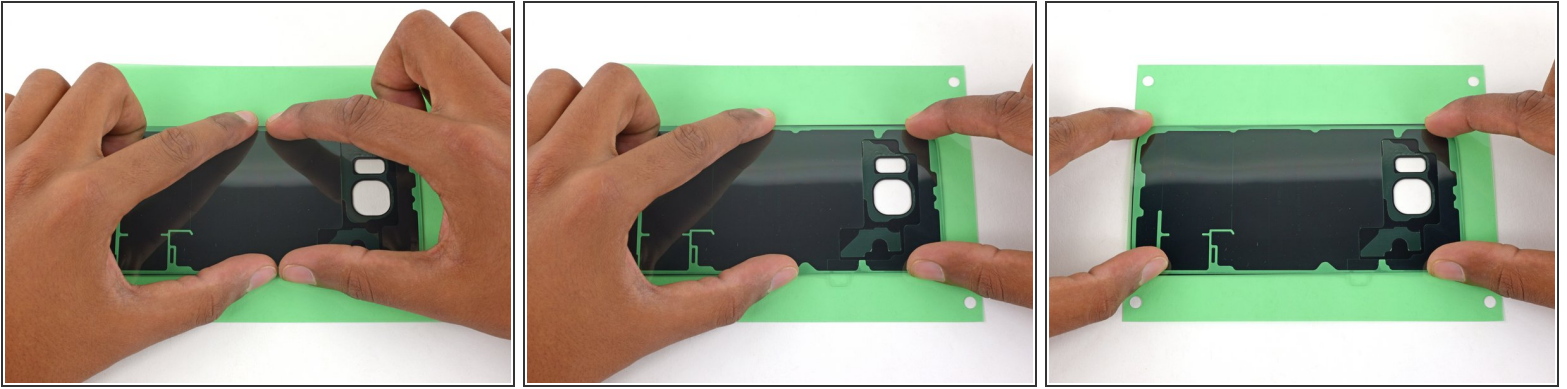
- Peel the clear film off of the adhesive packaging.

Step 2



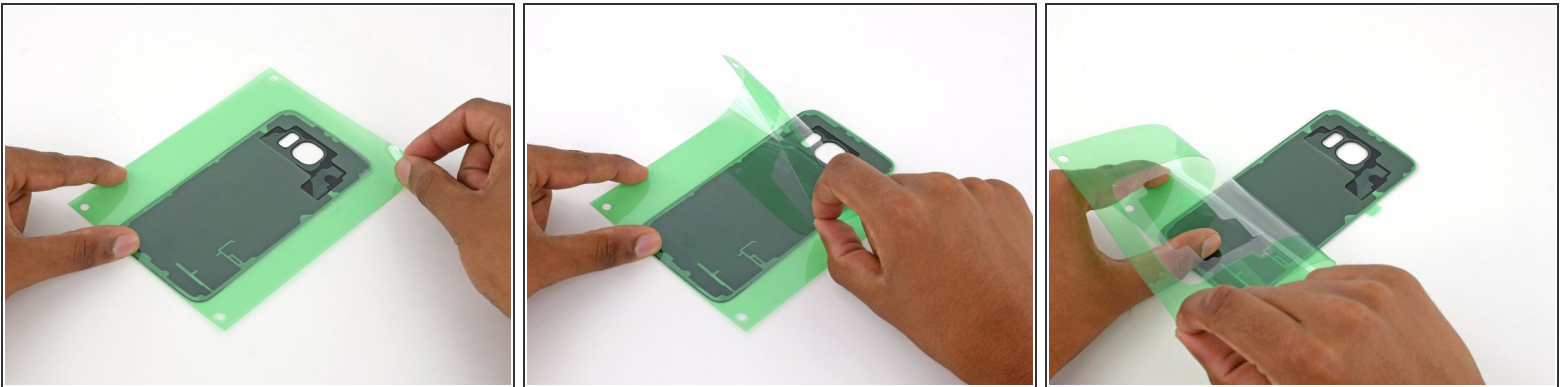
- ⓘ Lay the glass panel face-up and rotate it so that the lens holes are on your right.
- Grasp the adhesive from both sides and align the tape over the rear glass.
- ⓘ Make sure to align the camera and heart rate sensor holes on the phone with the adhesive tape.
- Lay the adhesive on top of the glass.

Step 3



- Run your fingers over the tape to firmly attach it to the glass.

Step 4



- Peel back the outer layer of green film.

Step 5



- Peel back the inner film layer.

Step 6



- If you didn't perfectly align the adhesive with the panel, use an X-Acto knife to trim away the edges.

i **This will only fix minor misalignments.** If you have to trim off more than half the adhesive strip, you should remove the tape and start over.

Step 7



- Use a pair of tweezers to remove any adhesive still on the midframe.
- Clean the adhesion areas with high concentration isopropyl alcohol (at least 90%) and a lint-free cloth.

Step 8



- Align the top of the rear glass with the top of the phone.
- Press the top edge of the glass into the midframe so that there's no gap at the top.

Step 9



- Lower the rest of the rear panel and press it firmly into the midframe.