



Samsung Galaxy S6 Edge+ Motherboard Replacement

Prereq-only to replace the motherboard in a Galaxy S6 Edge Plus.

Written By: Adam O'Camb



INTRODUCTION

Prereq-only guide to replace a defective or damaged motherboard in a Samsung Galaxy S6 Edge+.



TOOLS:

- [SIM Card Eject Tool](#) (1)
- [Phillips #00 Screwdriver](#) (1)
- [iOpener](#) (1)
- [Suction Handle](#) (1)
- [iFixit Opening Picks set of 6](#) (1)
- [Tweezers](#) (1)
- [Spudger](#) (1)



PARTS:

- [Galaxy S6 Edge Plus Rear Cover Adhesive](#) (1)
- [Galaxy S6 Edge Plus Motherboard \(AT&T\)](#) (1)

Step 1 — SIM Tray



- Insert a paper clip or SIM card eject tool into the hole in the SIM card slot on the volume button side of the phone.
 - ⚠ Do not insert the tool into the microphone hole or you could cause damage. Look for the outline of the SIM tray.
- Press to eject the SIM card tray.
- Remove the SIM card tray from the phone.

Step 2 — Rear Glass



- [Heat an iOpener](#) and apply it to the volume button side of the phone for about two minutes.
 - i You may need to reheat and reapply the iOpener several times to get the phone warm enough. Follow the iOpener instructions to avoid overheating.



A hair dryer, heat gun, or hot plate may also be used, but be careful not to overheat the phone

—the OLED display and internal battery are both susceptible to heat damage.

Step 3



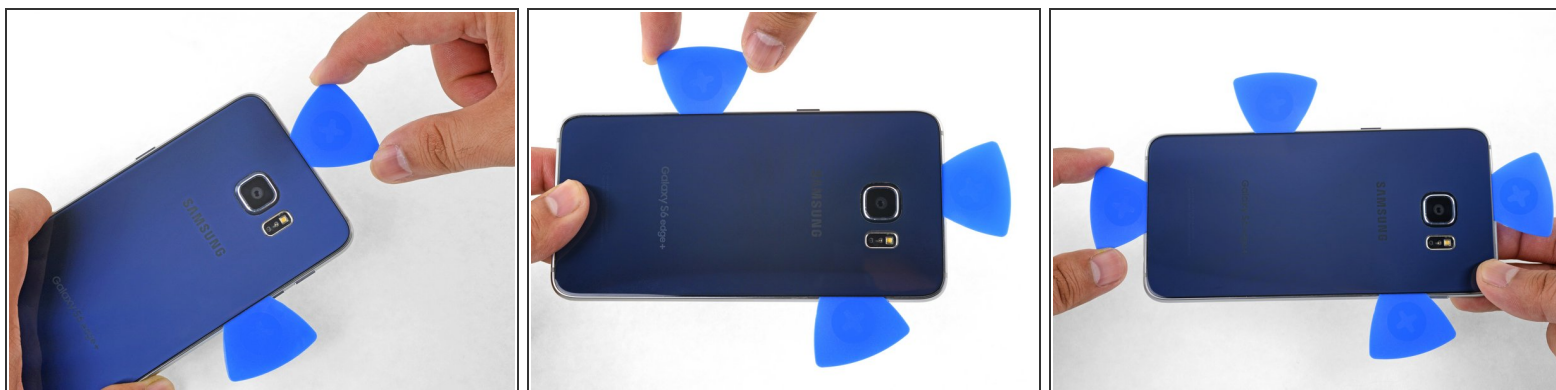
- Once the back panel is hot to the touch, apply a suction cup near the center of the phone, and as close as possible to the edge of the panel.
- Lift on the suction cup to create a small gap underneath the rear glass, and insert an opening pick into the gap.

Step 4



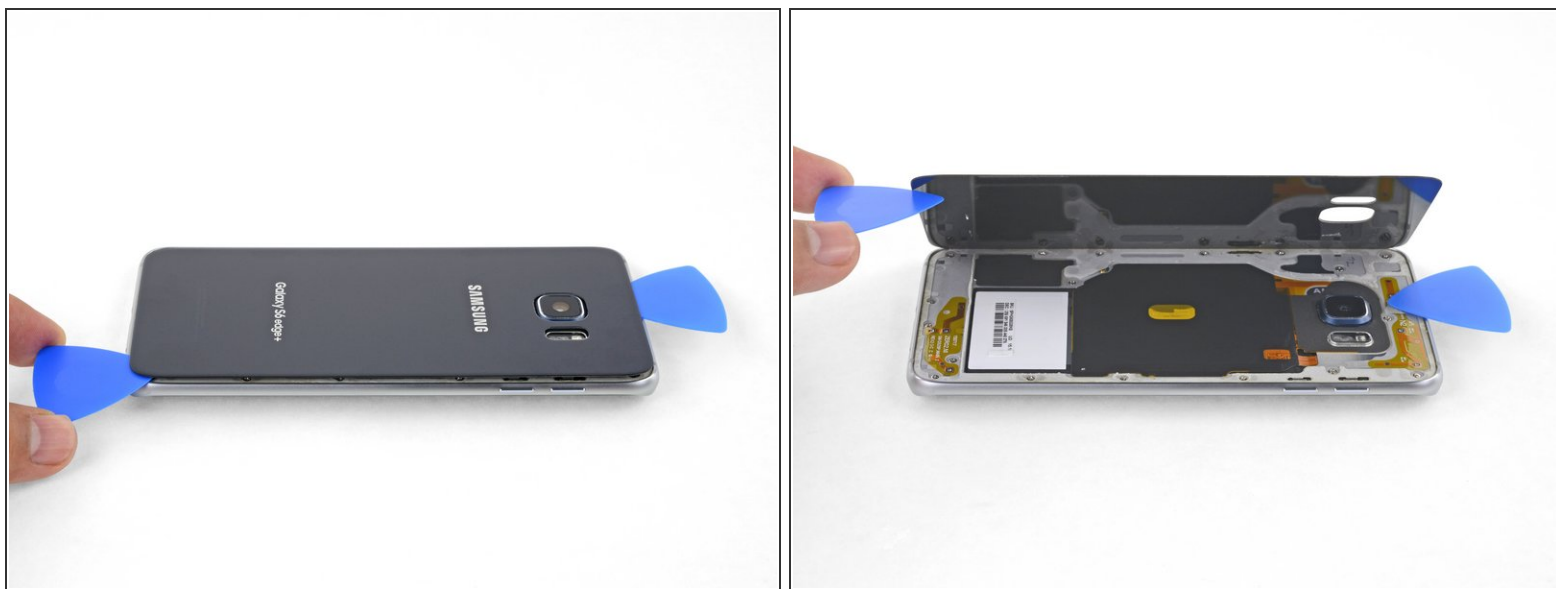
- Slide the pick along the side of the phone to cut the adhesive securing the rear panel.
- ❗ Go slowly so that the pick doesn't slip out of the seam. If cutting becomes difficult, reheat and reapply the iOpener.

Step 5



- Repeat the heating and cutting procedure for the remaining three sides of the phone.
- Leave an opening pick under each edge to prevent the adhesive from resealing.

Step 6



- Use an opening pick to slice through any remaining adhesive.
- Remove the rear glass.

Step 7



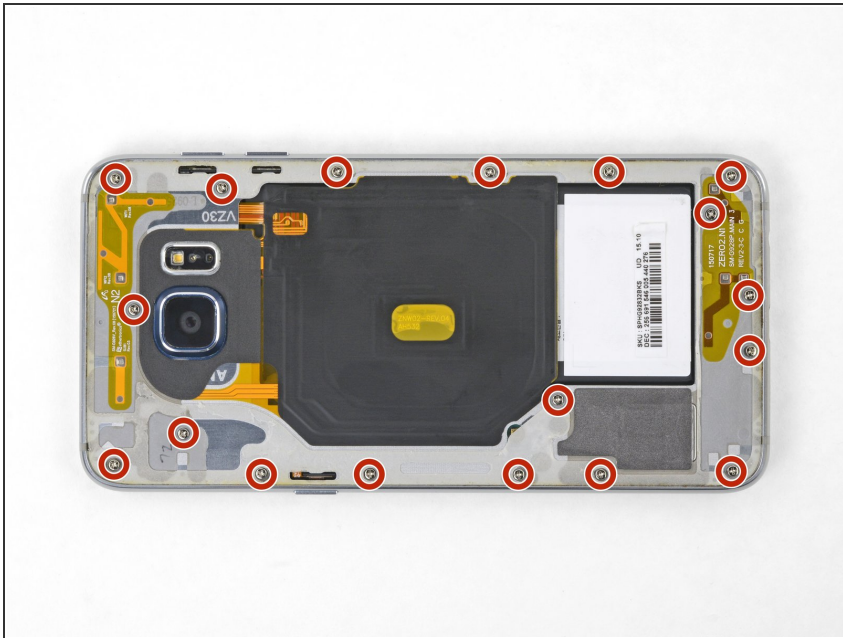
- ★ To reinstall the back cover:
- First use tweezers to peel away any remaining adhesive from both the back cover and the phone's chassis.
 - Then, clean the adhesion areas with high concentration isopropyl alcohol (at least 90%) and a lint-free cloth. Swipe in one direction only, not back and forth. This will help prep the surface for the new adhesive.
 - Be sure to turn on your phone and test your repair before installing new adhesive and resealing the phone.
 - Replacement adhesive comes in a pre-cut sheet to match the exact contours of the back cover. The sheet is asymmetrical, so make sure the screw holes in the adhesive sheet line up with the screws on the frame before applying the adhesive.
 - ⓘ If the adhesive sheet is not available, you can use a high-bond double-sided tape, such as [Tesa 61395](#).

- After installing the rear cover, apply strong, steady pressure to your phone for several minutes to

help the adhesive form a good bond, such as by placing it under a stack of heavy books.

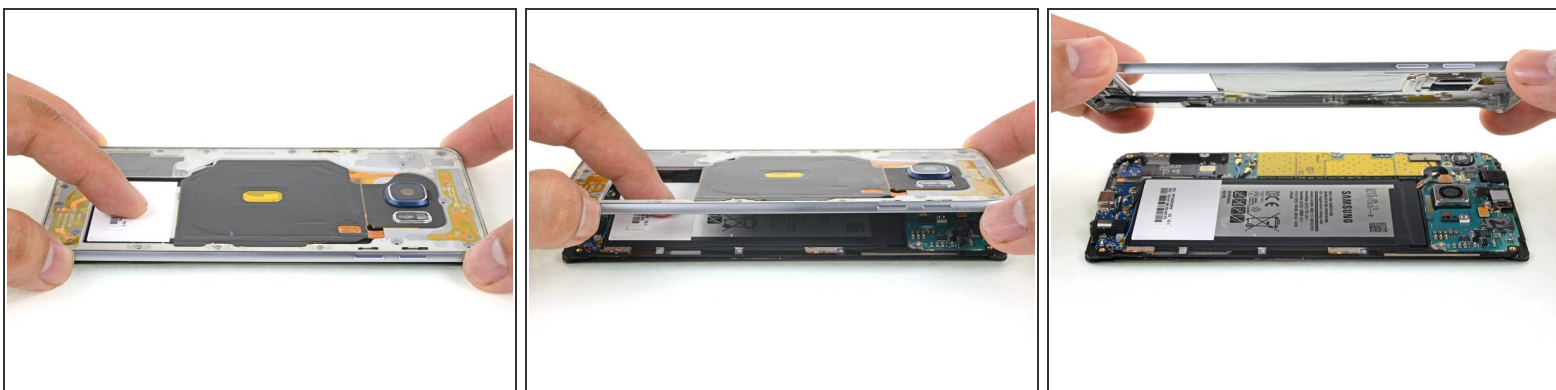
- ❗ If desired, you may reinstall the back cover without replacing the adhesive. Remove any large chunks of adhesive that might prevent the back cover from sitting down flush. After installation, heat the back cover and apply pressure to secure it. It won't be waterproof, but the glue is usually more than strong enough to hold.

Step 8 — Midframe



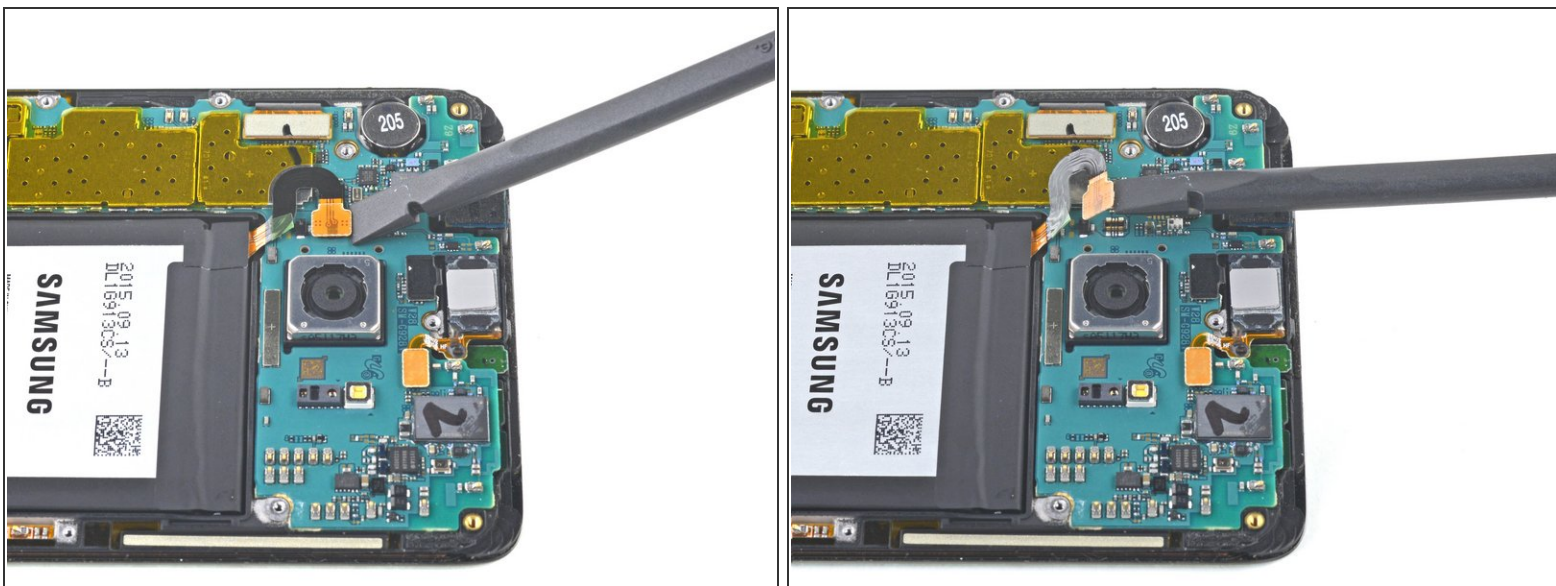
- Remove eighteen 3.2 mm screws from the midframe.

Step 9



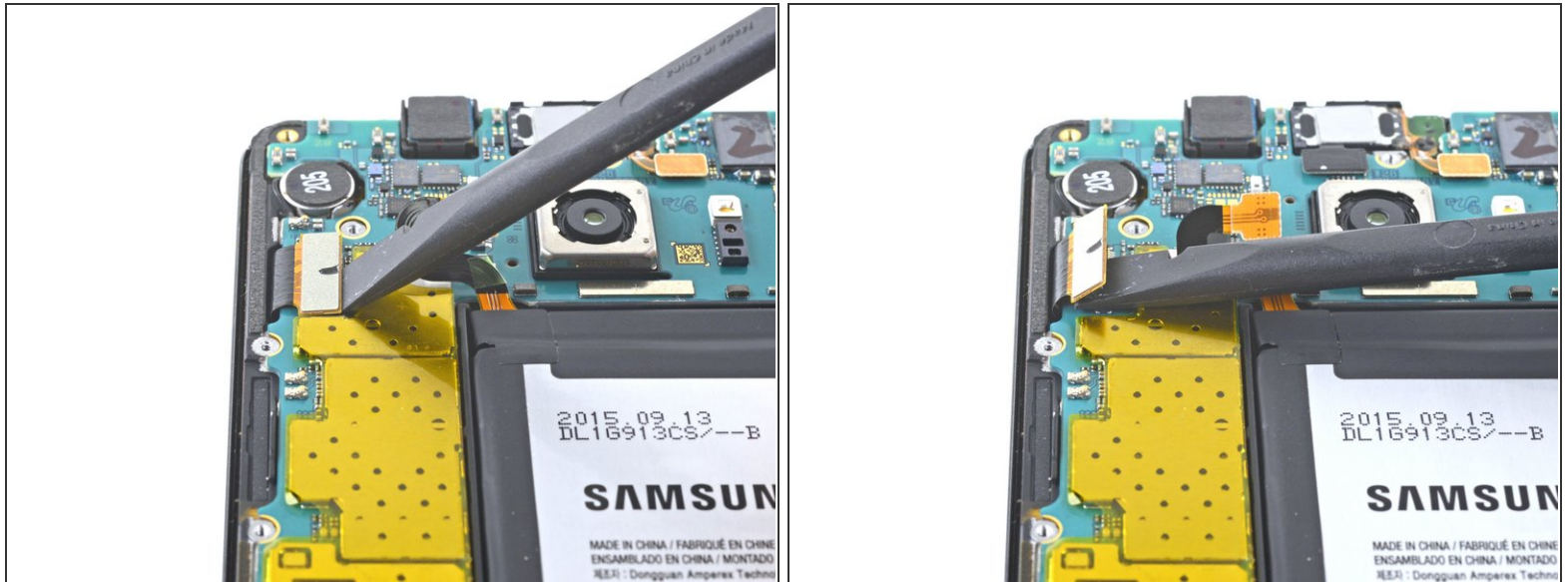
- Press down on the back of the battery while you lift up on the edges of the midframe to separate the midframe from the rest of the phone.

Step 10 — Motherboard



- Use the flat end of a spudger to disconnect the battery ribbon cable from the motherboard.

Step 11



- Use the flat end of a spudger to pry the display cable connector straight up out of its socket.
- ⓘ If you have a replacement display, you can pause here, plug in the battery, and plug in your new display to make sure that it functions correctly.
 - After testing the replacement display, unplug the battery and replacement display and continue with the guide.

Step 12



- Use the flat end of a spudger to disconnect the front-facing camera ribbon cable.

Step 13



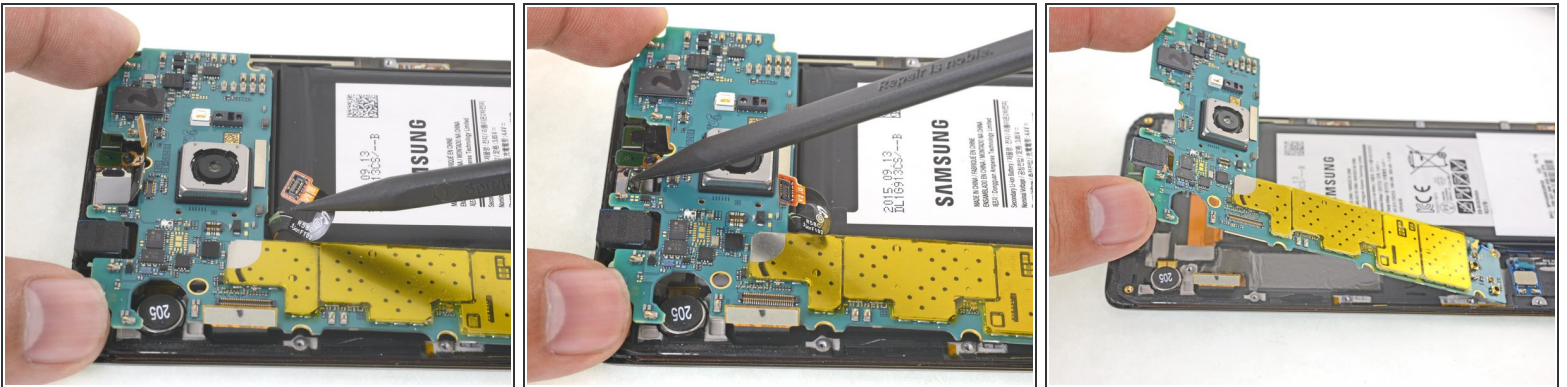
- Use the flat end of a spudger to disconnect the front-facing sensor array ribbon cable by prying it straight up from its socket.


Step 14



- Use the point of a spudger to disconnect the two antenna cables.

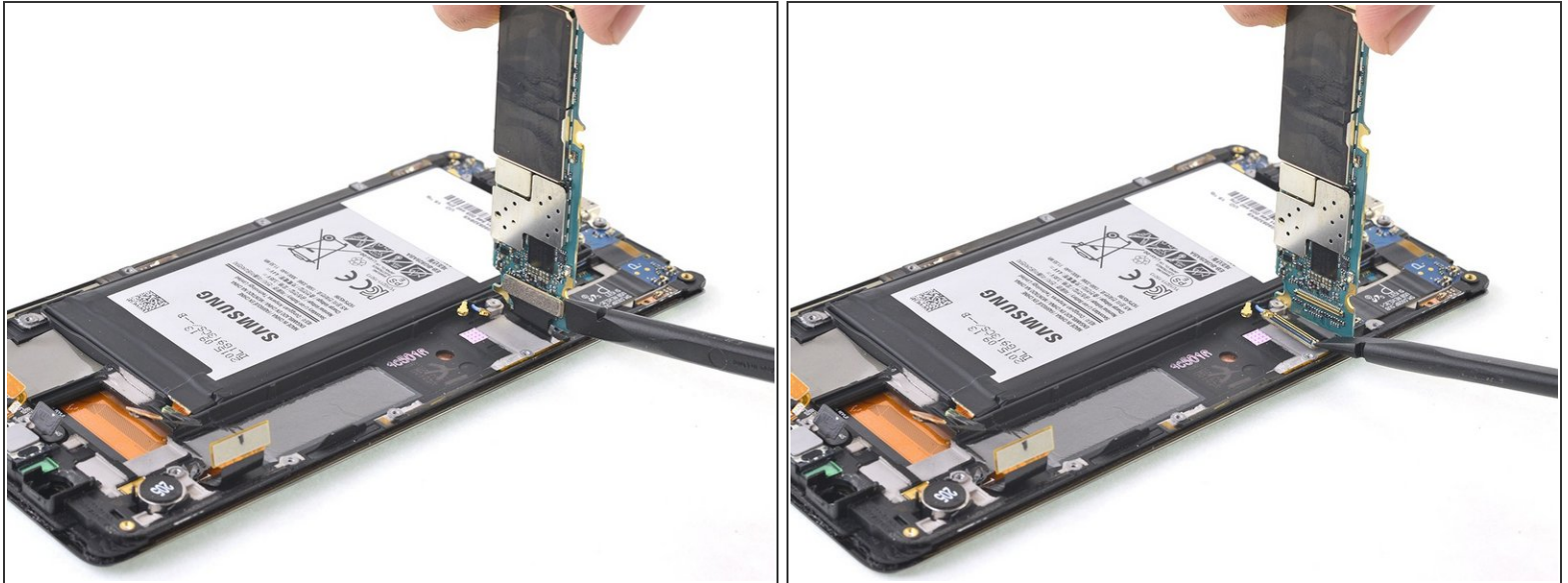
Step 15



 Do not lift the motherboard all the way out in this step; the daughterboard ribbon cable on the underside needs to be disconnected first.

- Grip the edges of the motherboard and lift up slightly.
- Use the point of a spudger to move the battery and sensor assembly ribbon cables away from the edges of the motherboard.
- With the battery and sensor assembly cables out of the way, hinge the motherboard up and away from the display, taking care not to put too much stress on the daughterboard ribbon cable.

Step 16



- Use the flat end of a spudger to disconnect the daughterboard ribbon cable from the underside of the motherboard.
- Remove the motherboard.

To reassemble your device, follow these instructions in reverse order.