



Samsung Galaxy S7 Active Sim Card Replacement

How to replace the sim card in a Samsung Galaxy S7 Active.

Written By: Joe De Leone



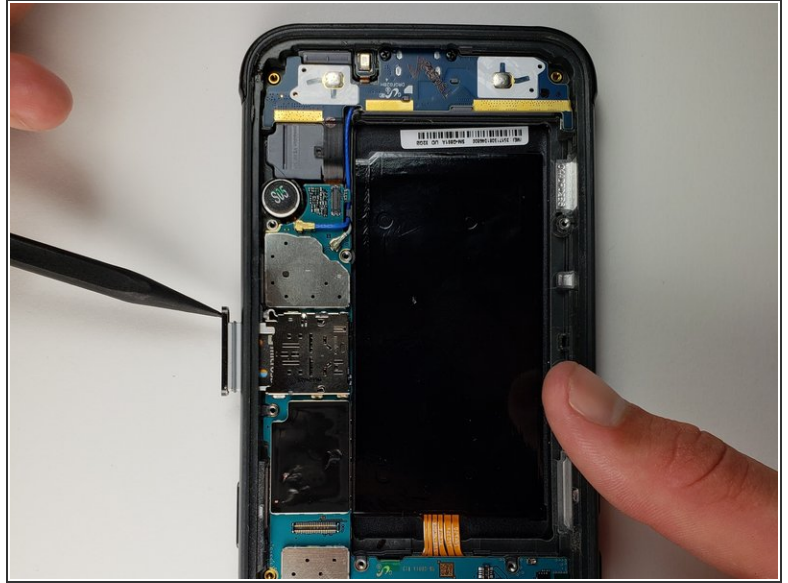
INTRODUCTION

This guide will teach you how to replace or access the sim card in the Samsung Galaxy S7 Active.

TOOLS:

- [Spudger](#) (1)
-

Step 1 — Sim Card



- Use the spudger to press in on the Sim card tray eject button.
- Use the spudger or your hand to take the tray out.

To reassemble your device, follow these instructions in reverse order.