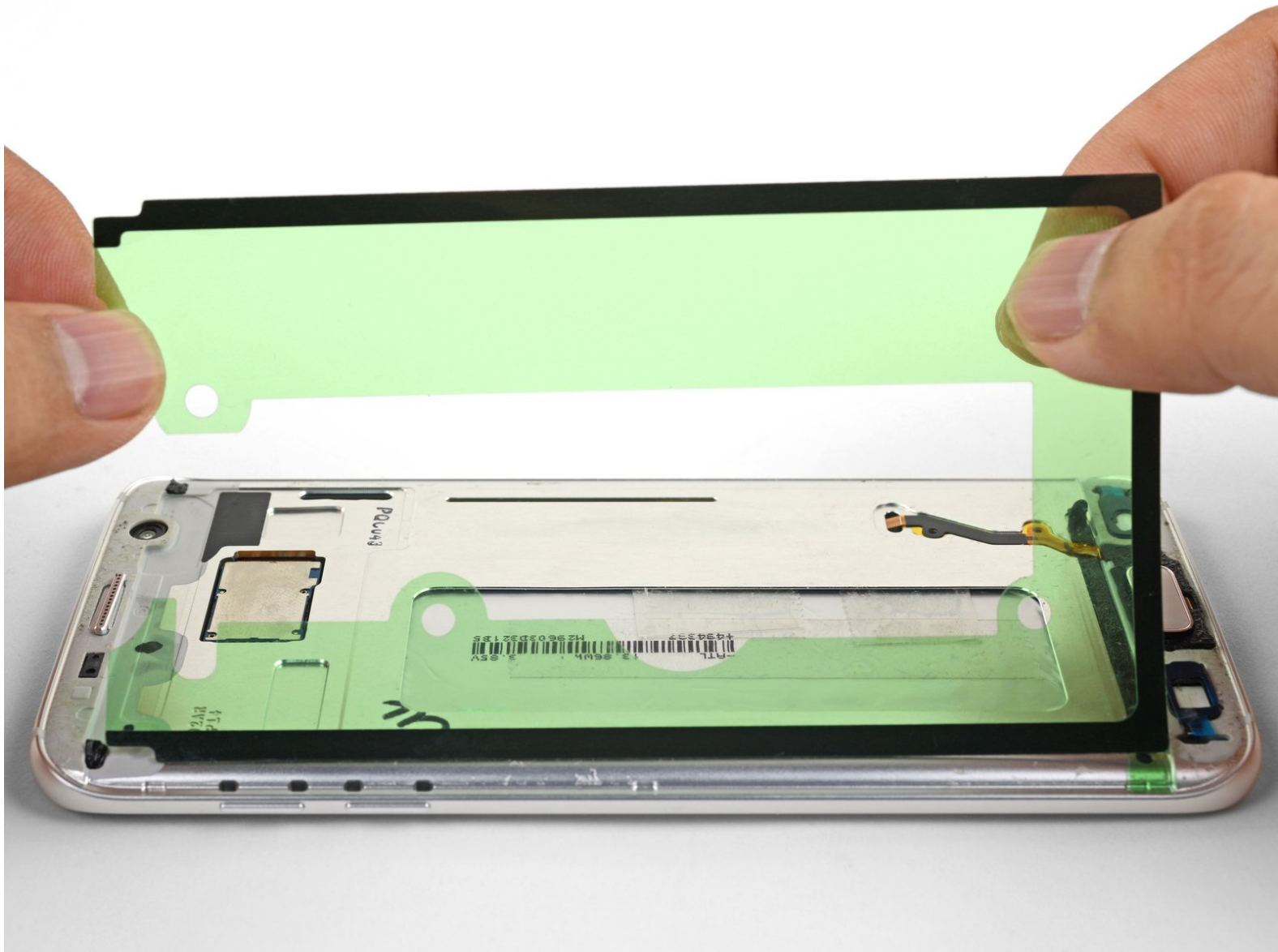




# Samsung Galaxy S7 Edge Display Adhesive Replacement

This guide shows how to apply and replace the display or screen adhesive for the Samsung Galaxy S7 Edge.

Written By: Arthur Shi



## INTRODUCTION

Follow this guide to replace the display or screen adhesive for the Samsung Galaxy S7 edge. This guide covers how to install a three-piece adhesive set as well as a full set.

This procedure is meant to be used in conjunction with the [Galaxy S7 Edge display assembly replacement guide](#).



### TOOLS:

- [Tweezers](#) (1)
- [iFixit Opening Tools](#) (1)
- [Isopropyl Alcohol](#) (1)



### PARTS:

- [Galaxy S7 Edge Touch Screen Adhesive](#) (1)

## Step 1 — Display Adhesive



- Remove all traces of adhesive and debris from **the phone frame's perimeter**. Clean the adhesion surface with high concentration isopropyl alcohol (over 90%) and wipe it clean with a lint-free cloth.
  - ⚠ If glue or glass remnants are left behind, the new display will not mount correctly and may be damaged.
- **Do not remove** the [recessed strip of adhesive](#) trapped under the fingerprint sensor cable. If there is adhesive adhered on top of this strip, carefully separate and peel the top adhesive off.
- ⓘ The capacitive buttons are thin and fragile. If the adhesive surrounding the buttons are in good condition, do not remove them.
  - If you do plan to replace the button adhesive, use tweezers to carefully pull the adhesive off. If needed, use an opening tool to gently scrape the adhesive off.
- Lay the adhesive strips out to get an idea of where they go.

## Step 2



**i** The next three steps describe how to replace the fingerprint bracket adhesive. If you did not replace the fingerprint sensor, you can probably skip this replacement.

- Insert the edge of an opening tool underneath black bracket surrounding the fingerprint sensor.
- Pry up and remove the fingerprint bracket.
- Use the opening tool to scrape off any adhesive residue from the fingerprint bracket.

## Step 3



- Peel off the **white backing** from the fingerprint bracket adhesive.
- Carefully align and apply the adhesive to the fingerprint bracket.
- Use your fingers to press the adhesive onto the bracket.
- Use tweezers to peel off the **blue plastic liner** from the adhesive.


## Step 4



- Carefully lay the bracket around the fingerprint sensor. The bracket holds the sensor in place, so it is important to ensure that it is well aligned.
- Once the bracket is aligned, use the flat edge of a spudger or a finger to press the bracket in place.

## Step 5

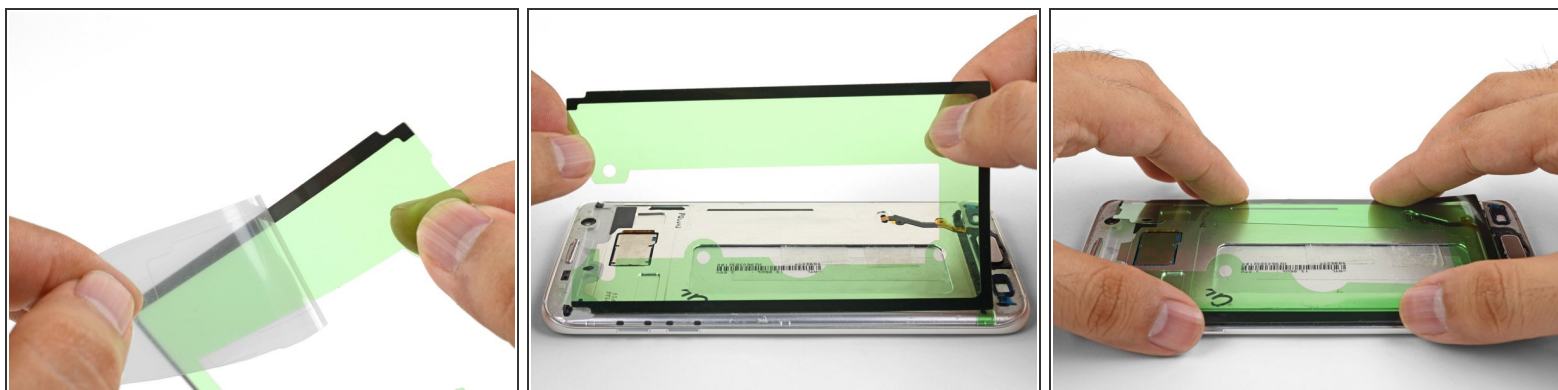


 This step describes how to replace the capacitive button adhesives. You can skip to the next step if you are not replacing these adhesives.

- Peel off the **white backing** from one of the capacitive button adhesives.
- Carefully align the adhesive over the capacitive button.
- Use your finger to press the adhesive in place.
- If needed, repeat the procedure for the other capacitive button.
- Peel off the **blue plastic liners** from the adhesives.



## Step 6



- Peel off the clear plastic backing from the U-shaped adhesive, exposing one side of the adhesive.
- Carefully line up a long edge of the adhesive with the corresponding edge of the phone frame. The open end of the "U" should face towards the top end of the frame.
- Set the adhesive down lightly on the frame.
  - If it is not properly aligned, you can carefully peel the adhesive back up and realign it.
- Once the adhesive is aligned, use your fingers to press the adhesive onto the frame.

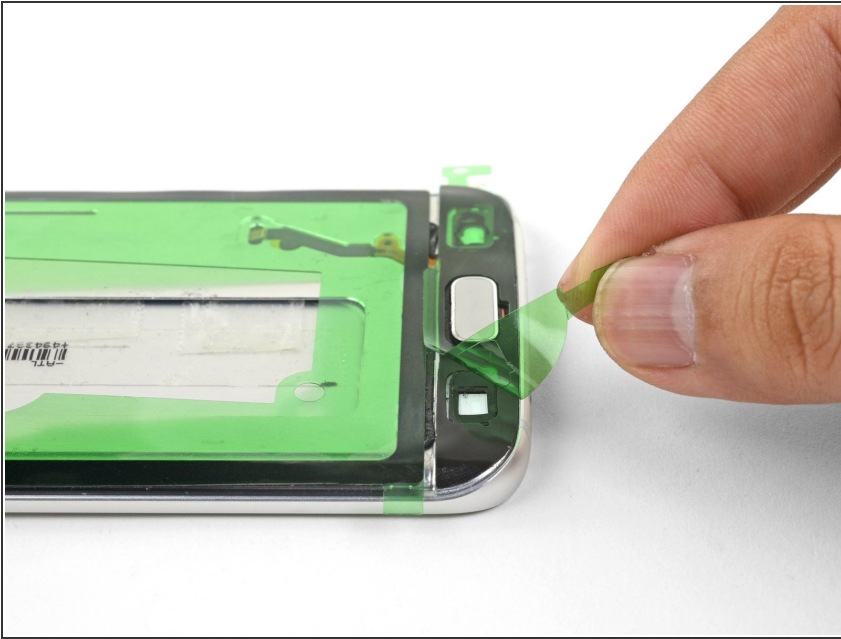
## Step 7



- Peel one of the end adhesive strips from the white plastic backing.
  - ❗ The strips are cut for a specific end and are not interchangeable.
- Holding the strip by the two green end tabs, line the adhesive strip with the phone frame.
- Set the adhesive down lightly on the phone. Make sure that all cutouts are properly aligned.
- Once aligned, use your fingers to press the adhesive into place.
- Repeat the procedure for the remaining end adhesive strip.



## Step 8



- Continue reassembling your device until you are ready to attach the screen.
- ① If possible, test your screen's functionality before adhering it in place.
- Peel and remove the green plastic liner from all adhesive strips to expose the screen-facing adhesive.
- Align and set the phone screen on top of the adhesive.
- Use your fingers to squeeze around the perimeter of the phone to set the adhesive.
- Apply a few books worth of weight on top of the screen for an hour to help the adhesive bond.

[Follow this link](#) to return to the Galaxy S7 Edge display assembly replacement guide.