



Samsung Galaxy SIII Mini Display Assembly Replacement

Samsung Galaxy SIII / S3 Mini / i8190 Display Assembly Replacement

Written By: ZFix



INTRODUCTION

If the touch screen / digitizer / glass or the LCD display is broken, this manual will show you, how to disassemble the phone and replace the Display Assembly without frame.

[text|align=center]

Video tutorial

[video: https://youtu.be/tEMp_IOPMco]



TOOLS:

- [Phillips #0 Screwdriver](#) (1)
- [Spudger](#) (1)
- [iFixit Opening Tools](#) (1)
- [Tweezers](#) (1)
- [Tesa 61395 Tape](#) (1)
- [iFixit Opening Picks set of 6](#) (1)



PARTS:

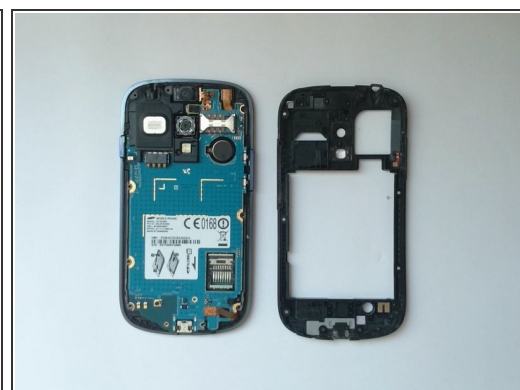
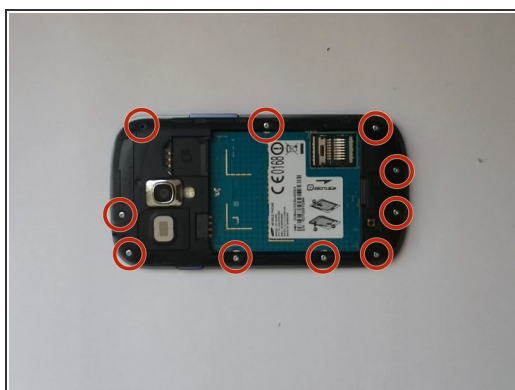
- [i8190 display assembly](#) (1)

Step 1 — Display Assembly



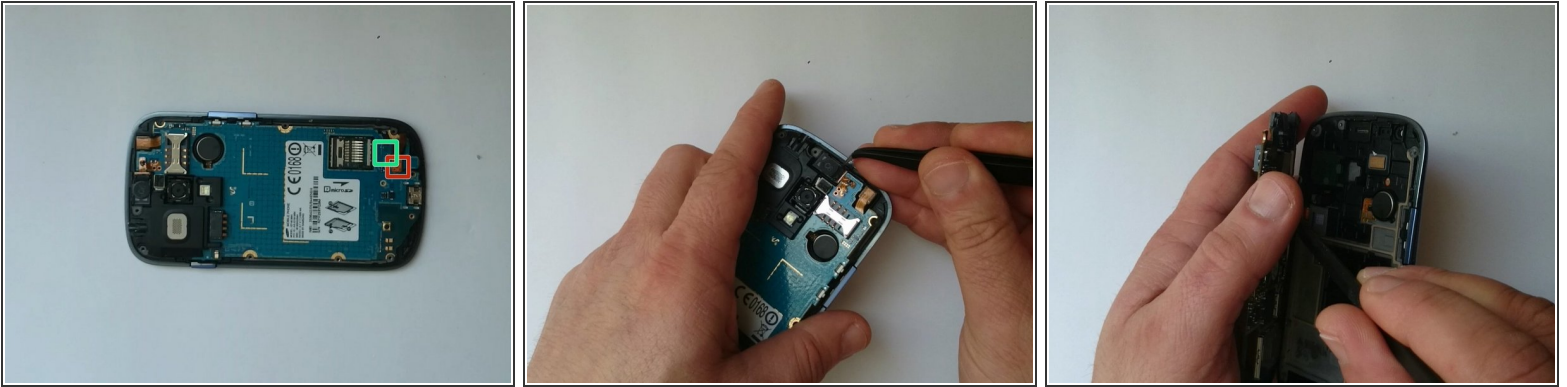
- LCD Display + Touch screen (Display Assembly) for Samsung Galaxy S III mini / i8190.
- Switch off the phone, remove the battery and any SIM and memory card.

Step 2



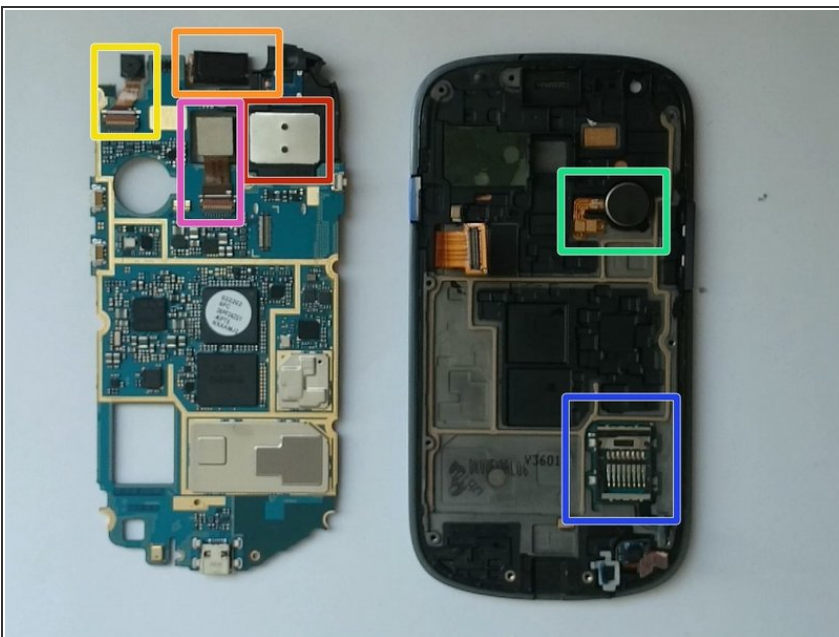
- Remove 10x Phillips screws.
- With a plastic tool remove the Middle frame.

Step 3



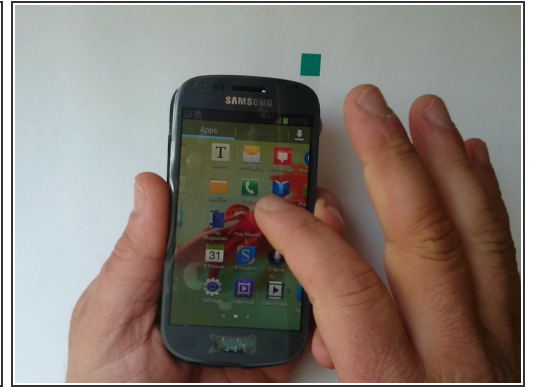
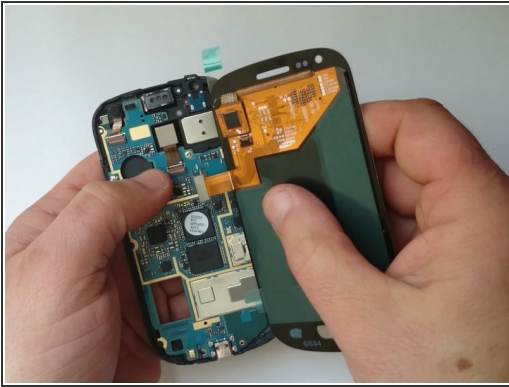
- Disconnect:
 - Menu buttons flex cable
 - Micro SD Card reader flex cable
- Lift up slightly the mother board from the right edge.
- ⚠ Unstick the Earpiece and Main camera from the display frame. Be careful, don't break flex cables.
- Now disconnect the LCD Display flex cable which is located on the underside of the board.

Step 4



- Front camera
- Main / Rear camera
- Earpiece
- Loudspeaker
- Vibro motor
- Micro SD Card reader

Step 5



- Let's test the new spare part.

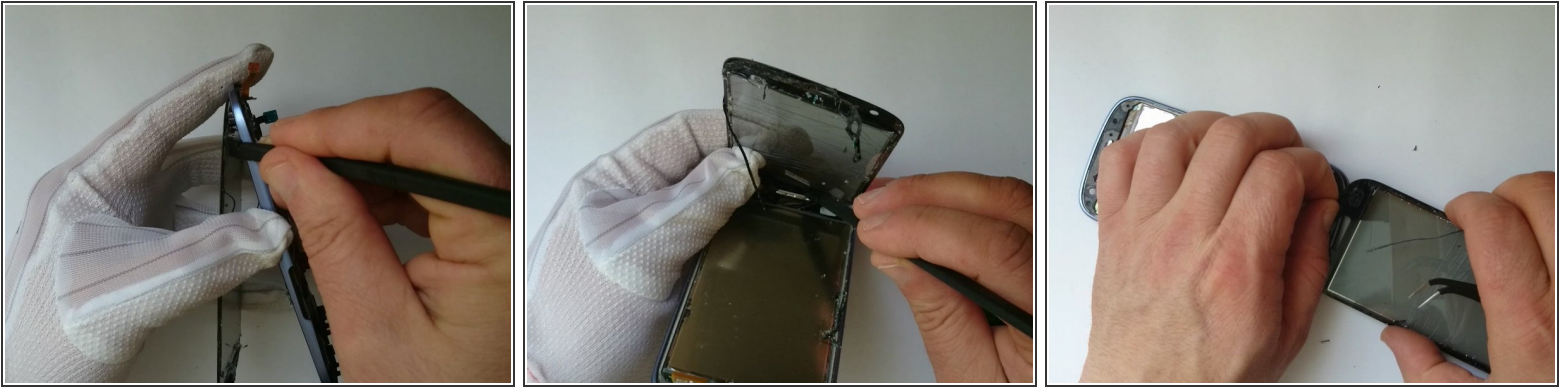
⚠ First connect the Display assembly, grab the phone comfortably and then put the battery.

Step 6



- Warm the touchscreen to make adhesive tape soft. You can use a hair dryer.
- ⓘ If the glass is cracked, put the tape in order not to scatter pieces.
- Use the front camera hole to separate the glass at the corner.
- Continue with separation with plastic tools, from up to down.

Step 7



 Gently separate the menu buttons flex cable from the touchscreen.

Step 8



- If the display is left on the frame, use the same techniques to remove it.

Step 9



- Clean the frame from the remnants of tape and install new.

⚠ Be careful with the menu buttons and the holes for the camera and the light sensor, don't cover them.

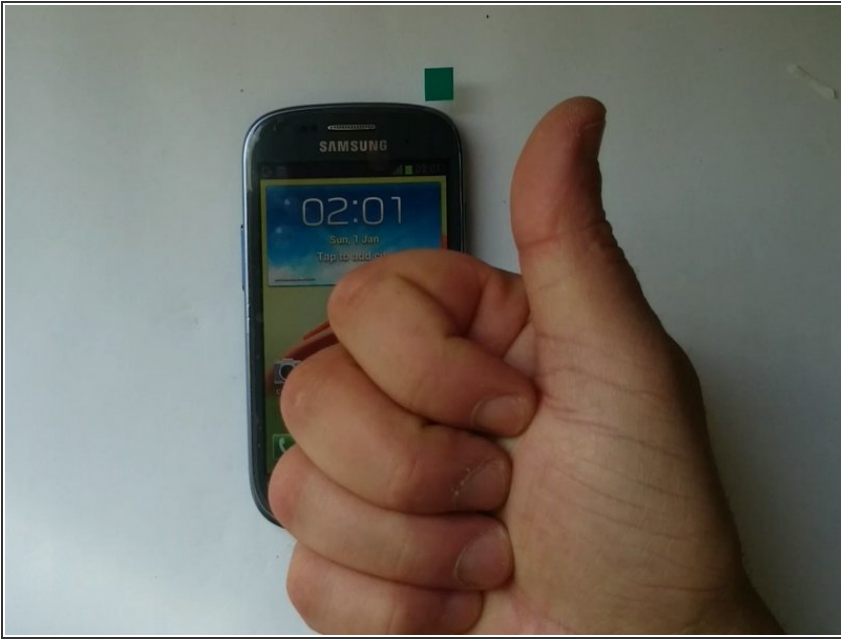
Step 10



ⓘ Will be easier if you use adhesive, ready for the model.

- Install the new display assembly and start with reassembling.

Step 11



- That's all.
- .
- .
- .
- .
- .
- Did you do it successfully?

To reassemble your device, follow these instructions in reverse order.