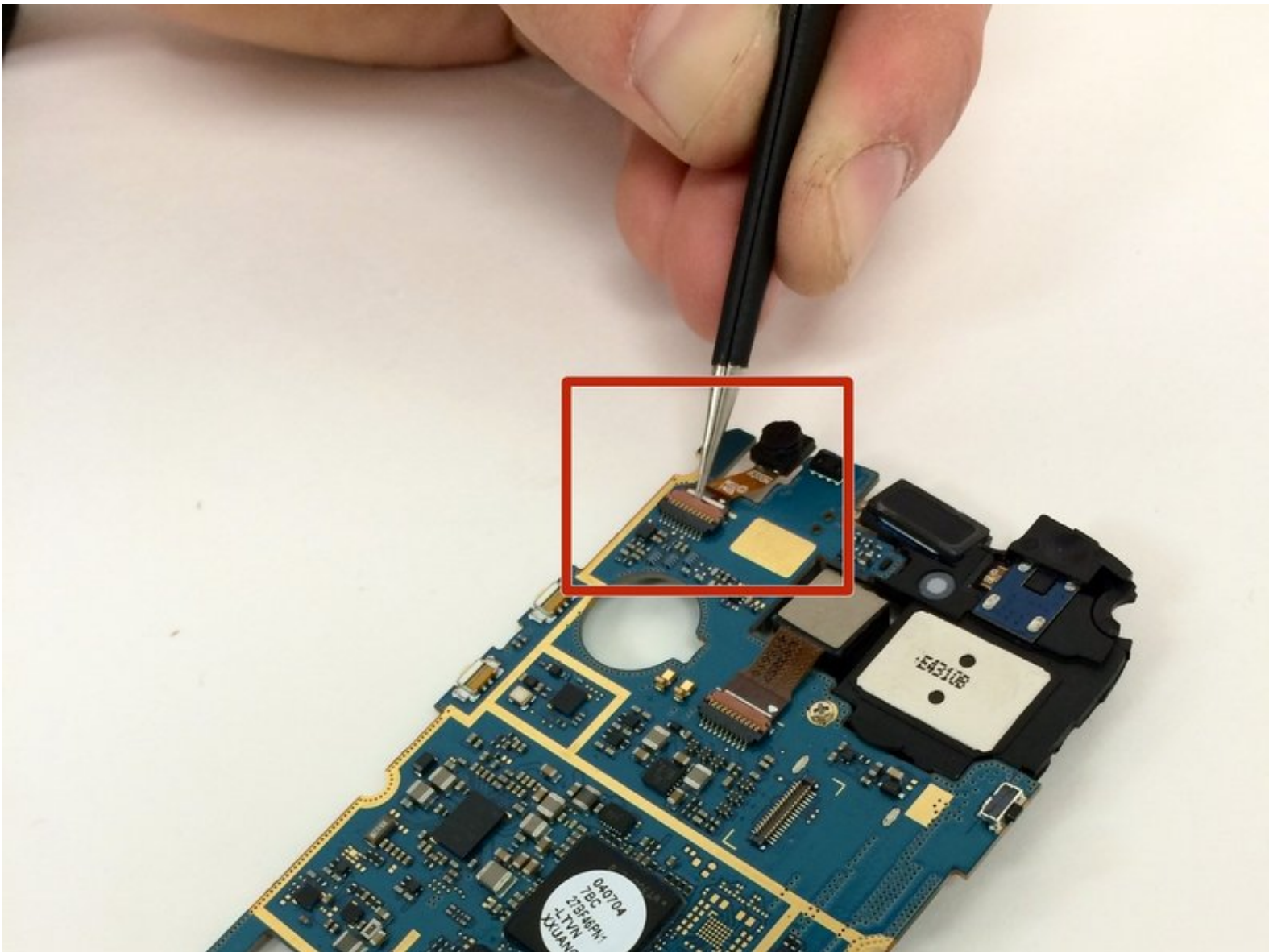




Samsung Galaxy SIII Mini VE Front Camera Replacement

If the front camera in your Galaxy SIII Mini VE is broken or malfunctioning, this guide will show you the steps to replace it.

Written By: Megan



This document was generated on 2019-09-21 11:11:37 AM (MST).

INTRODUCTION

Using these steps, you can replace the front camera on your Galaxy SIII Mini VE.



TOOLS:

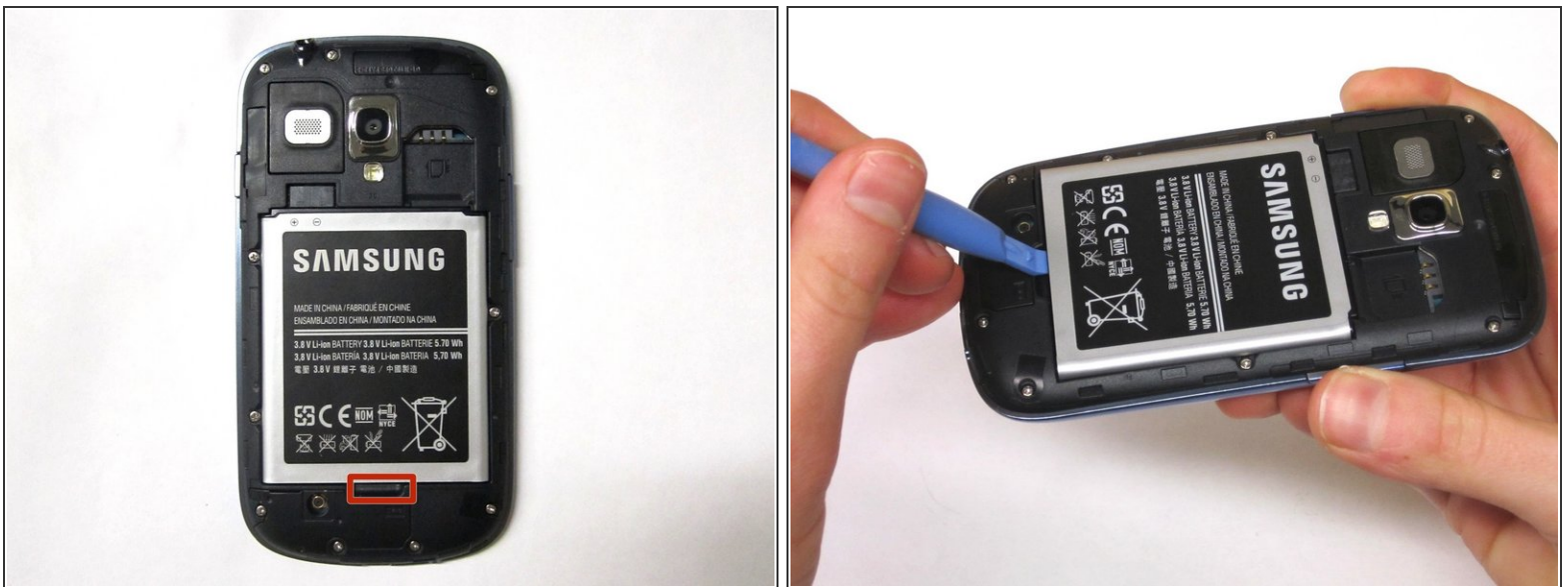
- [Phillips #00 Screwdriver](#) (1)
 - [iFixit Opening Tools](#) (1)
 - [Spudger](#) (1)
 - [Tweezers](#) (1)
-

Step 1 — Removing Rear Casing



- Flip your phone so you are facing the back.
- Locate the notch at the top and gently use your finger or an opening tool to remove the rear casing.

Step 2 — Removing Battery



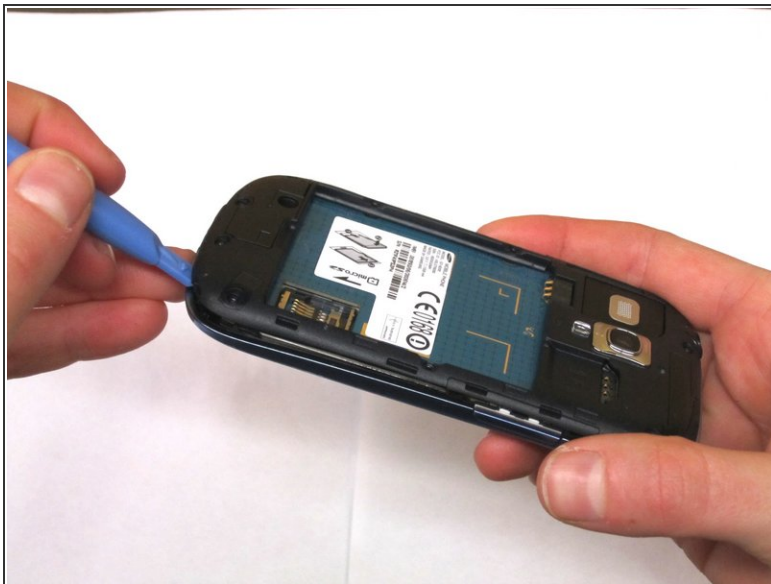
- Use your finger or an opening tool to pry the battery out of the phone.

Step 3 — Removing Screws



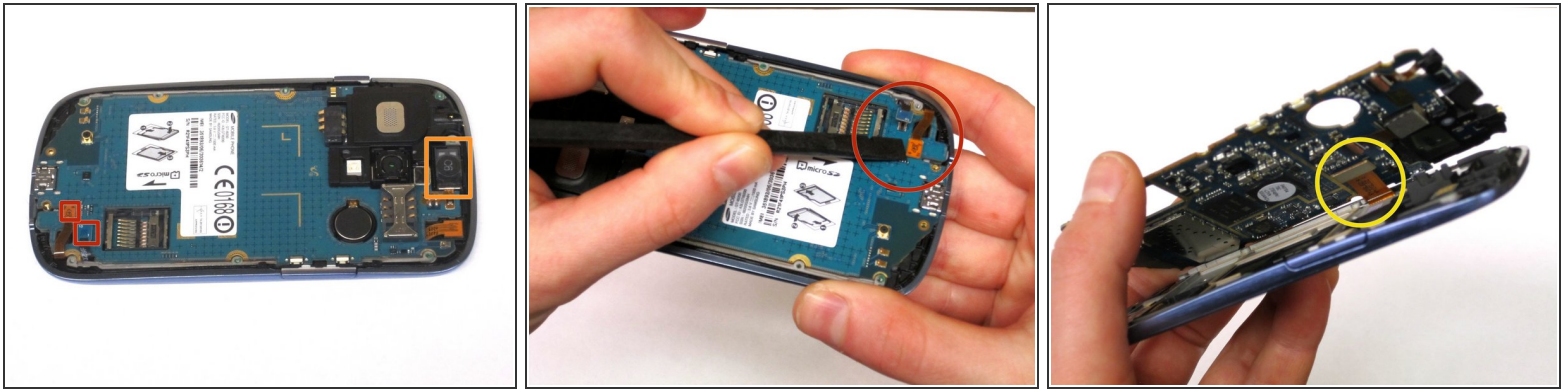
- Use the Phillips #000 Screwdriver to remove the 10, 4mm screws holding the plastic frame in place.

Step 4



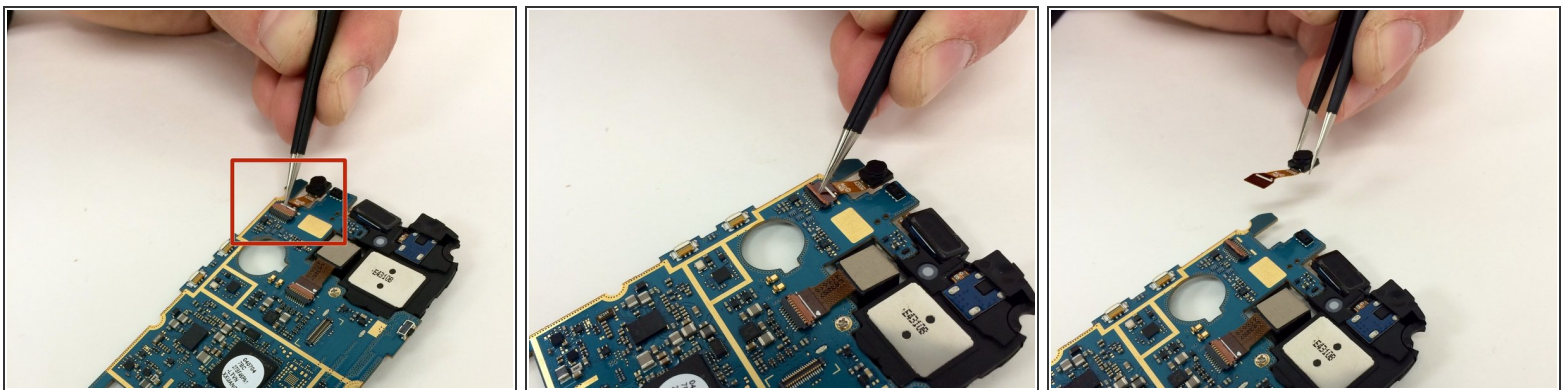
- Using an opening tool, gently separate the plastic framing from the phone.

Step 5 — Removing Circuit Board



- Unhook the two electrical connections at the bottom of the phone using your fingernail or a spudger.
- Next, use the spudger and tweezers to remove the speaker at the top of the phone.
- Once the 3 components have detached, the circuit board should release from the phone except for 1 connection on the underside.
- Detach this connection using the spudger.

Step 6 — Removing Front Camera



- Locate the front camera connection.
- Using the tweezers, lift the holding tab at the base of the ribbon wire.
- Again, using the tweezers, gently pull the front camera out and away from the phone.

To reassemble your device, follow these instructions in reverse order.