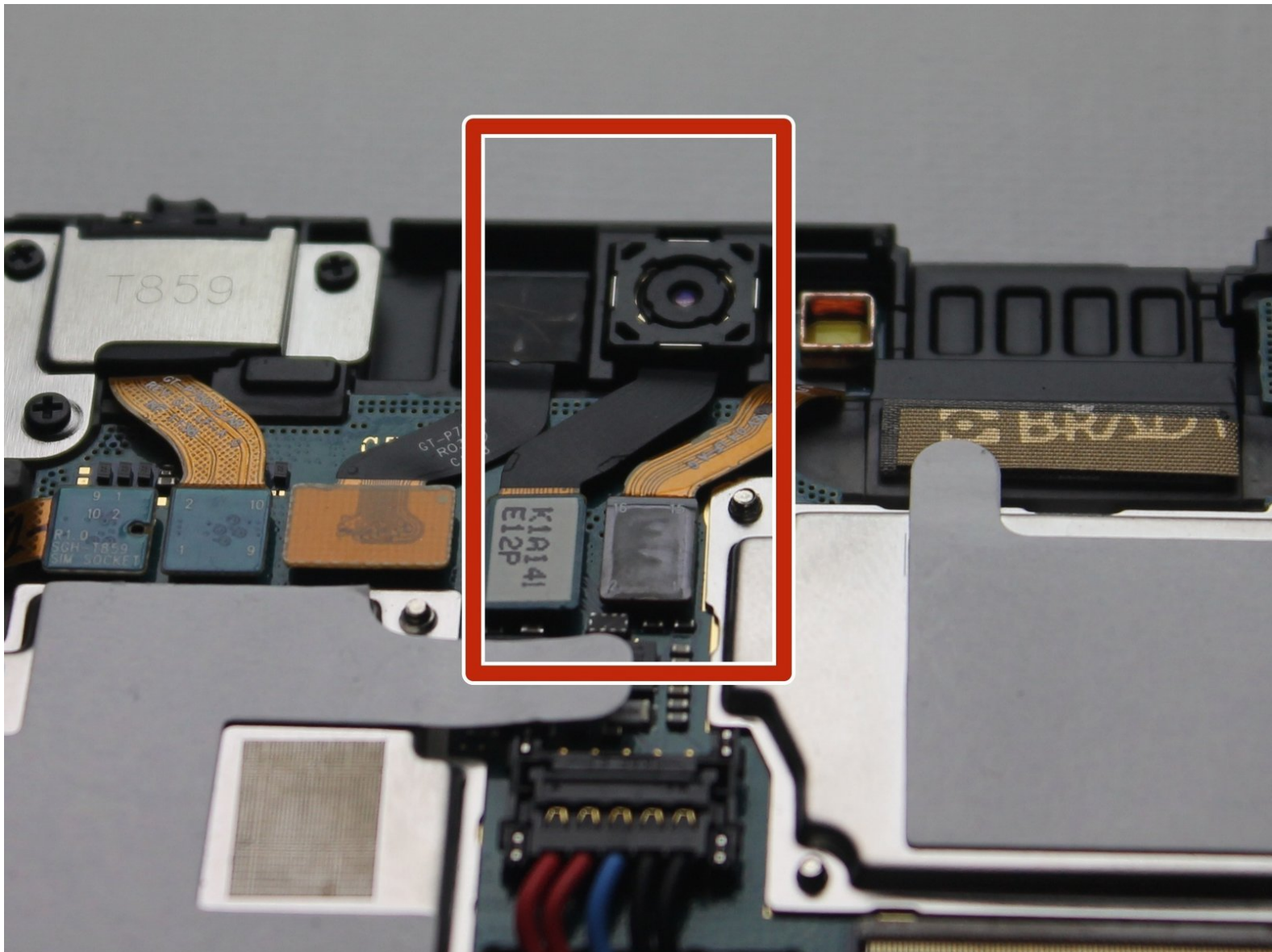




Samsung Galaxy Tab 10.1 4G Back Facing Camera Replacement

This guide will walk you through the steps necessary to replace the rear-facing camera on your Samsung Galaxy Tab 10.1 4G.

Written By: Ashley Stark



This document was generated on 2019-09-25 06:34:00 AM (MST).

INTRODUCTION

Once the back panel of the device has been removed, replacing the rear camera is very straightforward. Make sure you disconnect the correct cable and you'll be fine!



TOOLS:

- [iFixit Opening Tools](#) (1)



PARTS:

- [Samsung Galaxy Tab 10.1 Rear Camera](#) (1)

Step 1 — Back Panel



- ❗ Power off your tablet before you begin disassembly.
- Screen side facing you, rotate device 180 degrees so the "SAMSUNG" logo is upside down.

Step 2



- Using the plastic opening tool, start in the center near the charge port and wedge the angled tip between the plastic back and the glass screen.
- Create a wedge and apply pressure. Use the tool to separate the screen from the back until you hear an audible “pop.”
- Continue to wedge the tool about every inch along the current edge.

Step 3




- Once the bottom edge has been loosened, work towards a bottom corner from the other edge and continue to wedge gently until you can “pop” the corner out.
- Continue this process on the other bottom corner until it can be popped out as well.

Step 4



- Place your hand between the device and the back panel. Then continue the wedging motion along the top edge of the device until the back panel comes loose.

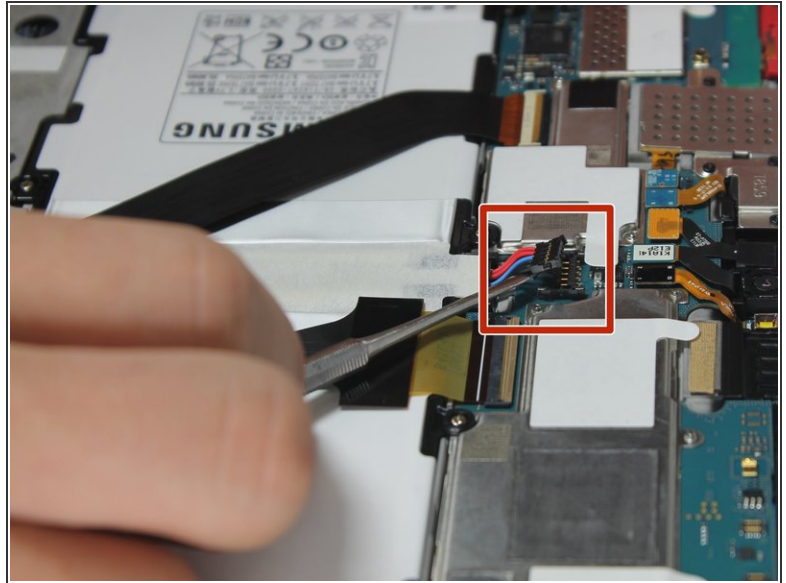
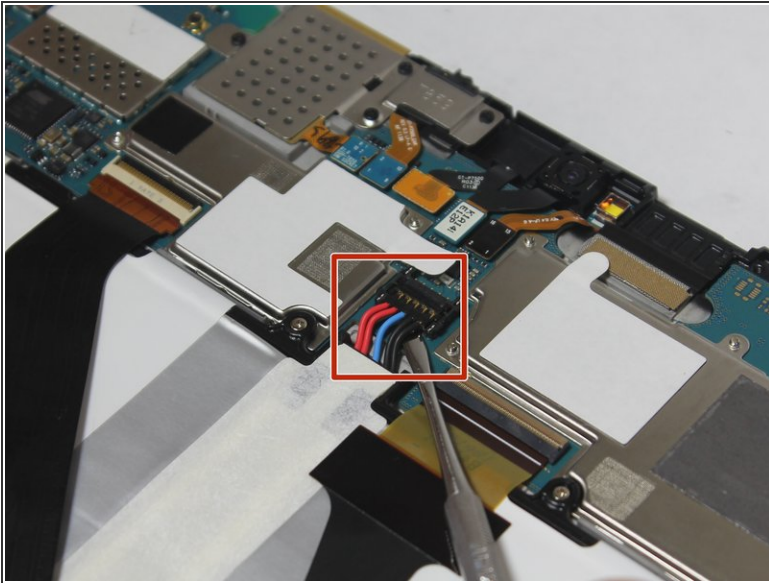
 Do not wedge the tool directly on top of the power buttons and headphone jack. Wedge nearby so that you don't damage internal hardware.

Step 5



- Remove the back from the device.
- ⓘ Excessive force shouldn't be necessary here. If the back panel is sticking, find the area of the edge closest to the sticking point and wedge the opening tool there until the back panel pops free.

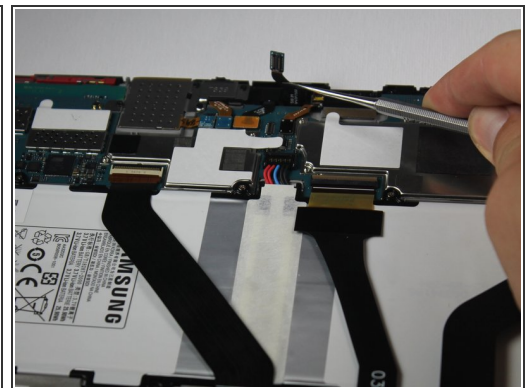
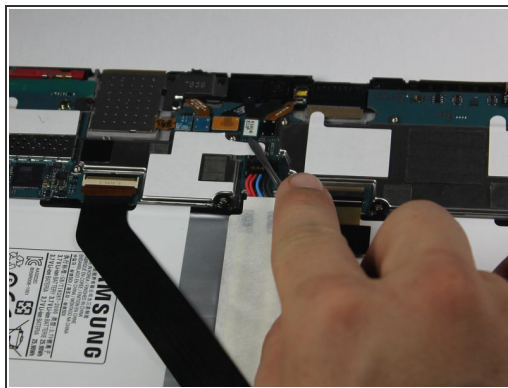
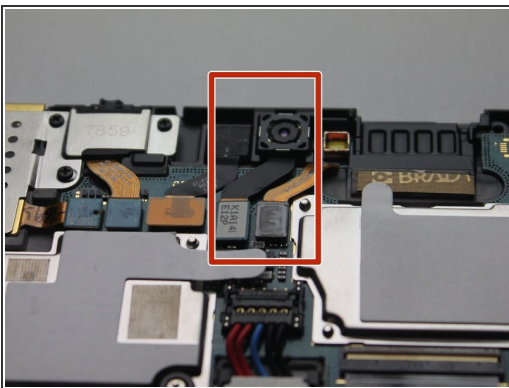
Step 6



⚠ When working with electronics, it's important to choose a tool that's ESD-safe to avoid accidental damage to the device. The regular black nylon spudger or a plastic opening tool should be used whenever possible.

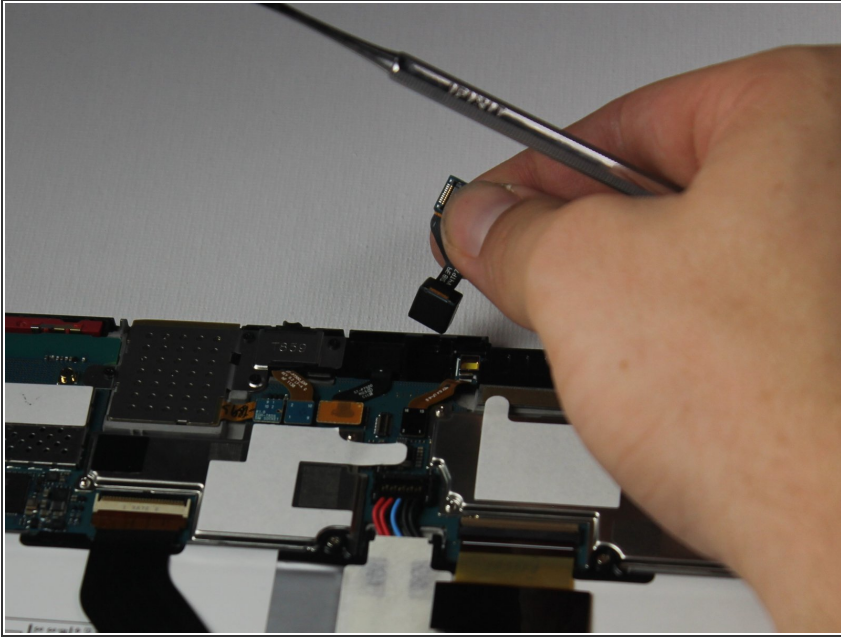
- The connection between the battery and motherboard is a group of four wires in black housing that can be found near the top middle of the device. Using a **plastic** spudger or a flat, slim tool, lift the black connector housing upwards to disconnect it.

Step 7 — Back Facing Camera



- Disconnect the rectangular connection from the rear camera to the motherboard.
- A group of five connections are all together. Starting from the left, the fourth connection is the one you want to remove.

Step 8



- Remove the back facing camera.

To reassemble your device, follow these instructions in reverse order.