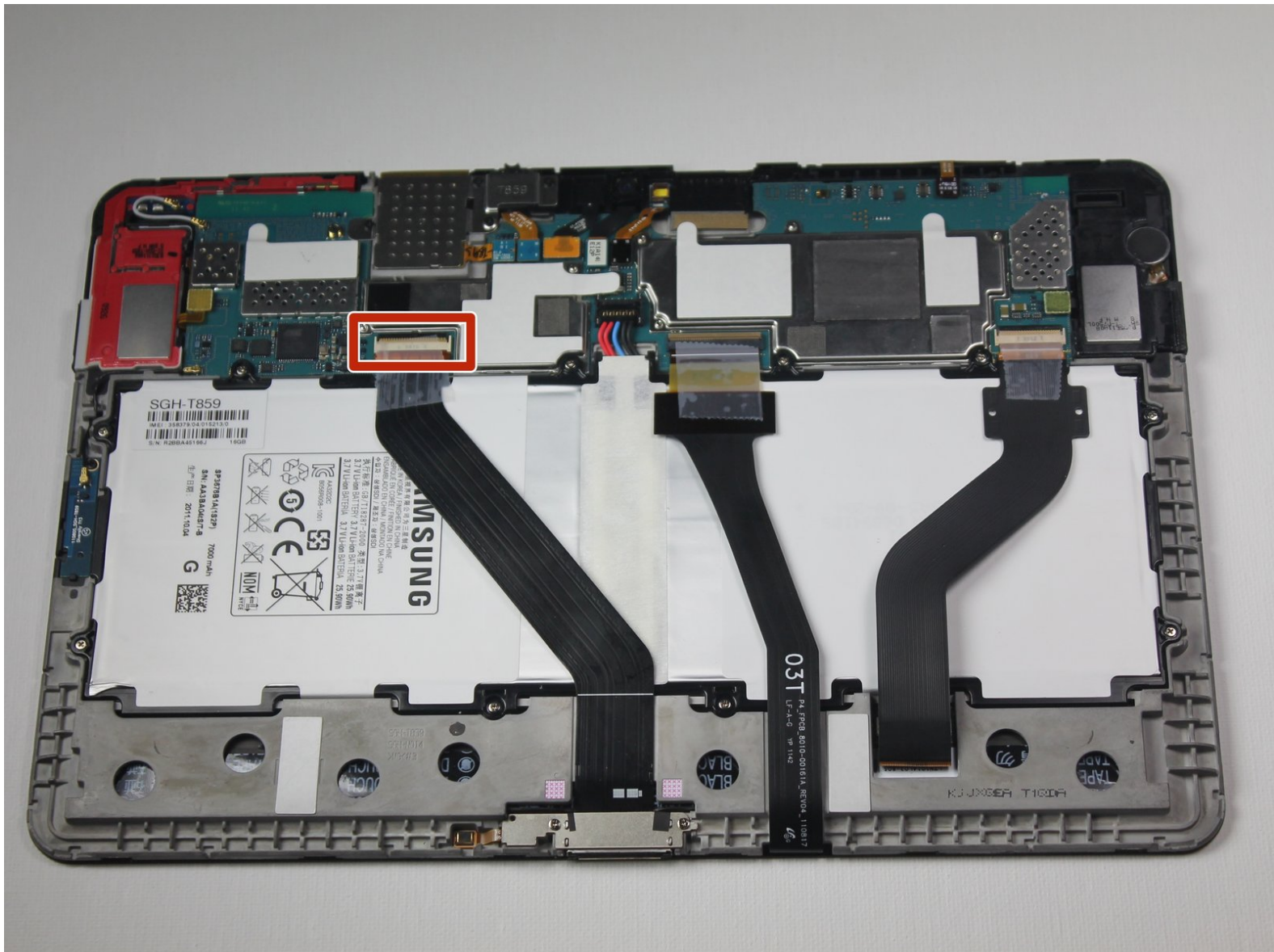




Samsung Galaxy Tab 10.1 4G Charge Port Replacement

This guide walks you through the steps necessary to replace the charge port on your Samsung Galaxy Tab 10.1 4G.

Written By: Ashley Stark



This document was generated on 2019-09-21 10:47:20 AM (MST).

INTRODUCTION

There are a few important things to recognize when replacing the charge port. The connection between ribbon cable and motherboard is initially tricky, but when you've loosened the connection, the ribbon cable will slide right out. There is some adhesive between the ribbon cable and the device near the charge port. It's okay to pull this loose because your new charge port will have more adhesive.



TOOLS:

- [Phillips #00 Screwdriver](#) (1)
 - [iFixit Opening Tools](#) (1)
 - [Spudger](#) (1)
-

Step 1 — Back Panel



- ❗ Power off your tablet before you begin disassembly.
- Screen side facing you, rotate device 180 degrees so the "SAMSUNG" logo is upside down.

Step 2



- Using the plastic opening tool, start in the center near the charge port and wedge the angled tip between the plastic back and the glass screen.
- Create a wedge and apply pressure. Use the tool to separate the screen from the back until you hear an audible “pop.”
- Continue to wedge the tool about every inch along the current edge.

Step 3




- Once the bottom edge has been loosened, work towards a bottom corner from the other edge and continue to wedge gently until you can “pop” the corner out.
- Continue this process on the other bottom corner until it can be popped out as well.

Step 4



- Place your hand between the device and the back panel. Then continue the wedging motion along the top edge of the device until the back panel comes loose.

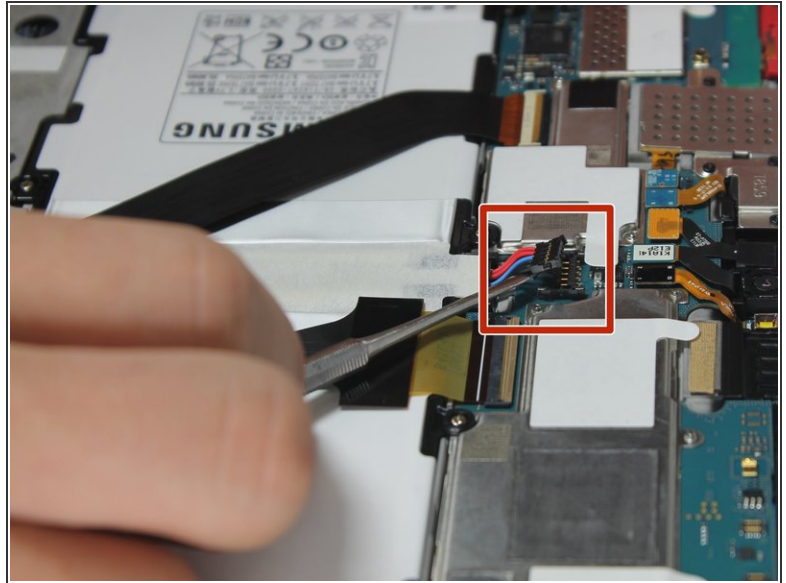
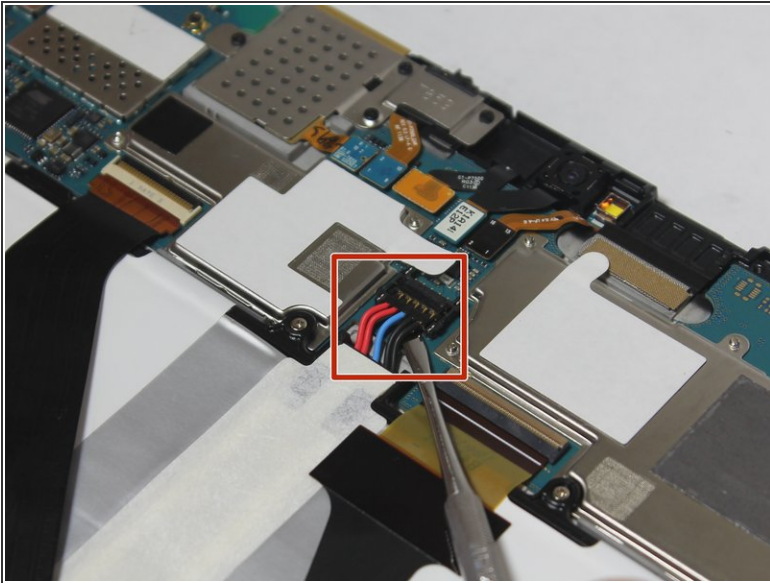
 Do not wedge the tool directly on top of the power buttons and headphone jack. Wedge nearby so that you don't damage internal hardware.

Step 5



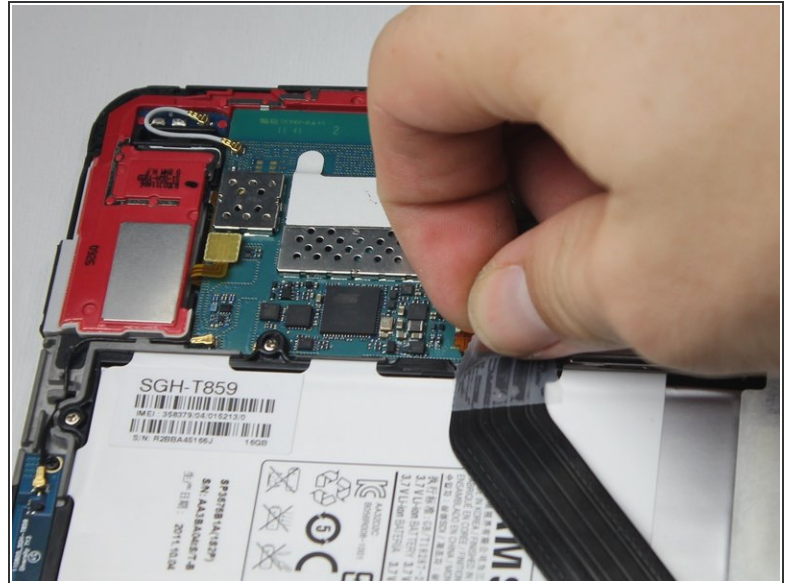
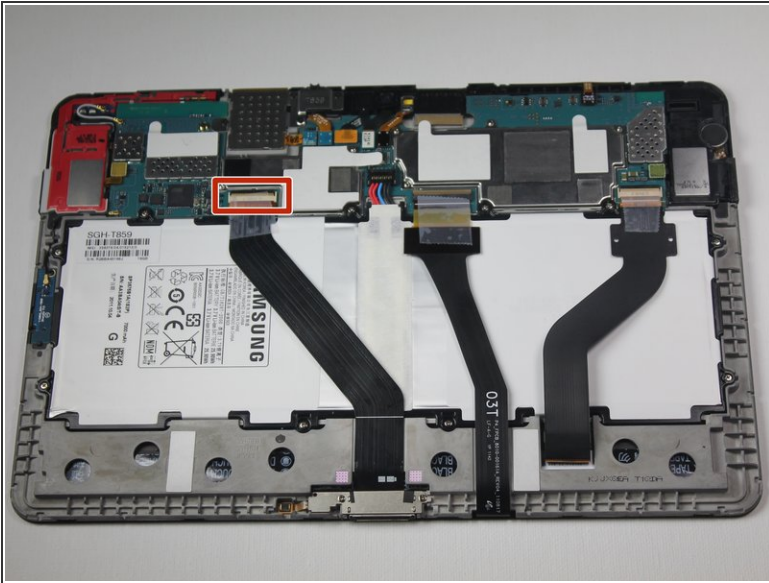
- Remove the back from the device.
- ⓘ Excessive force shouldn't be necessary here. If the back panel is sticking, find the area of the edge closest to the sticking point and wedge the opening tool there until the back panel pops free.

Step 6



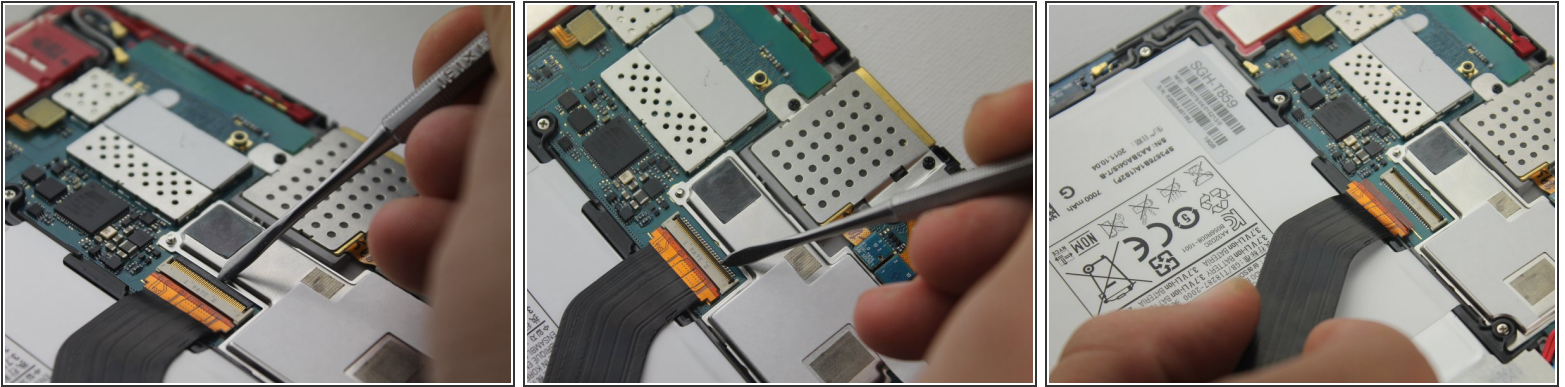
- ⚠ When working with electronics, it's important to choose a tool that's ESD-safe to avoid accidental damage to the device. The regular black nylon spudger or a plastic opening tool should be used whenever possible.
- The connection between the battery and motherboard is a group of four wires in black housing that can be found near the top middle of the device. Using a **plastic** spudger or a flat, slim tool, lift the black connector housing upwards to disconnect it.

Step 7 — Charge Port



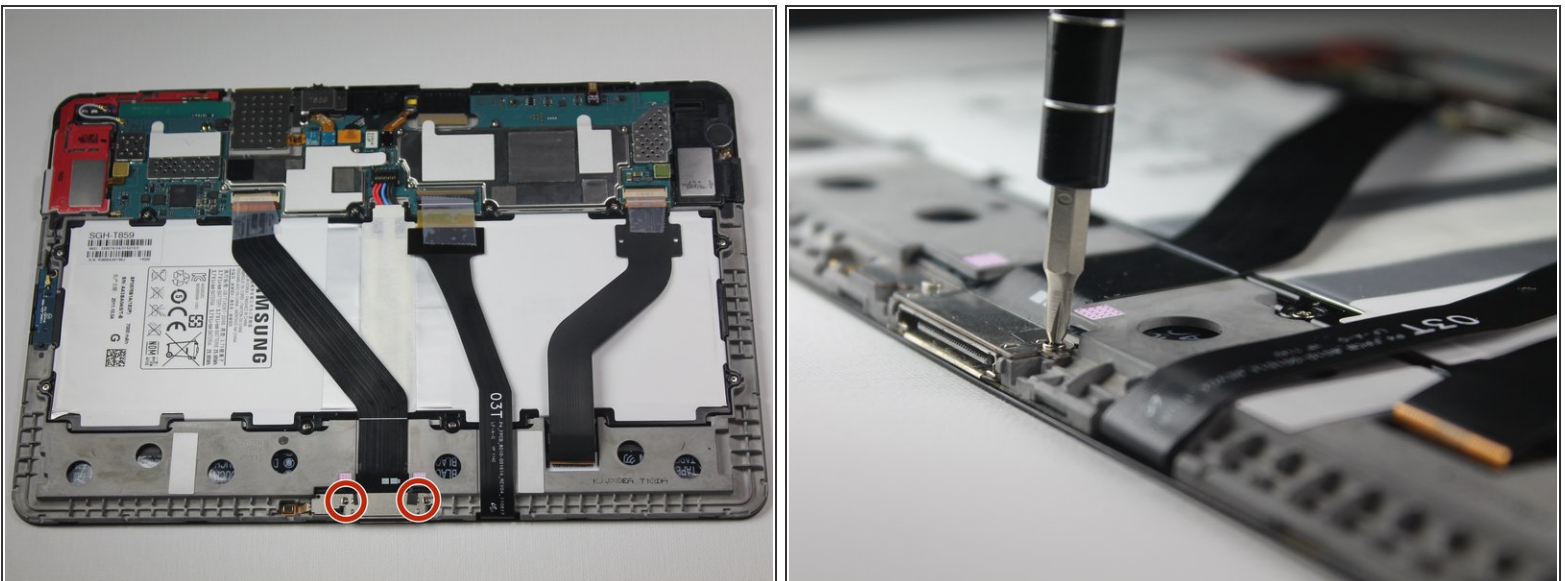
- Remove the tape covering the charge port ribbon cable.
- ⓘ Keeping the tape is not necessary.

Step 8



- Slide a *plastic* spudger tool under the strip of black plastic on the back of the ribbon connector.
- ⚠ Metal spudgers can puncture an unprotected battery, potentially causing a fire. When working with electronics, it's important to choose a tool that's ESD-safe to avoid accidental damage to the device. The regular black nylon spudger or a plastic opening tool should be used whenever possible.
- Gently lift with the spudger to flip the connector up. This will release the ribbon from its connection.
 - Slide the ribbon out of the connector.

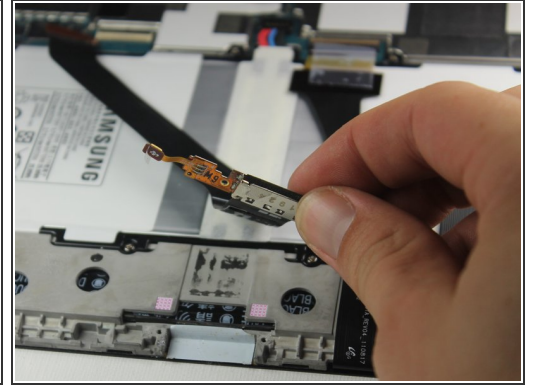
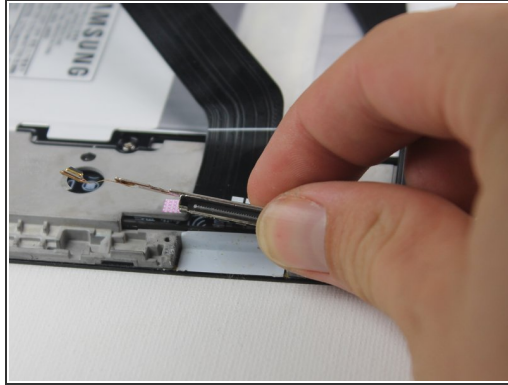
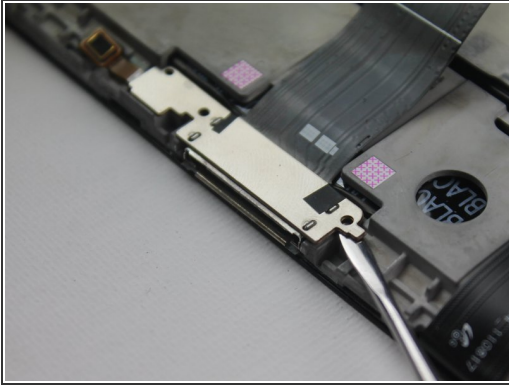
Step 9



- Use the Phillips #00 screwdriver to remove both of the 3-mm screws.

This document was generated on 2019-09-21 10:47:20 AM (MST).

Step 10



- Slide the **plastic** spudger under the charge port to lift it from it's housing.
- Pull up on the charge port to remove it and its ribbon cable.
- ⓘ You may have to pull fairly hard; the adhesive holds the bottom section of cable to the tablet tightly.

To reassemble your device, follow these instructions in reverse order.