



Samsung Galaxy Tab 10.1 Rear Facing Camera Replacement

Use this guide to help you replace the rear facing camera on the Samsung Galaxy Tab 10.1.

Written By: Jess McCafferty



INTRODUCTION

In this guide, you will learn how to remove and replace your rear facing camera on your Samsung Galaxy Tab 10.1. A broken rear camera makes for difficult taking pictures of beautiful landscapes or family gatherings. There are a couple of prerequisites to get out of the way first!



TOOLS:

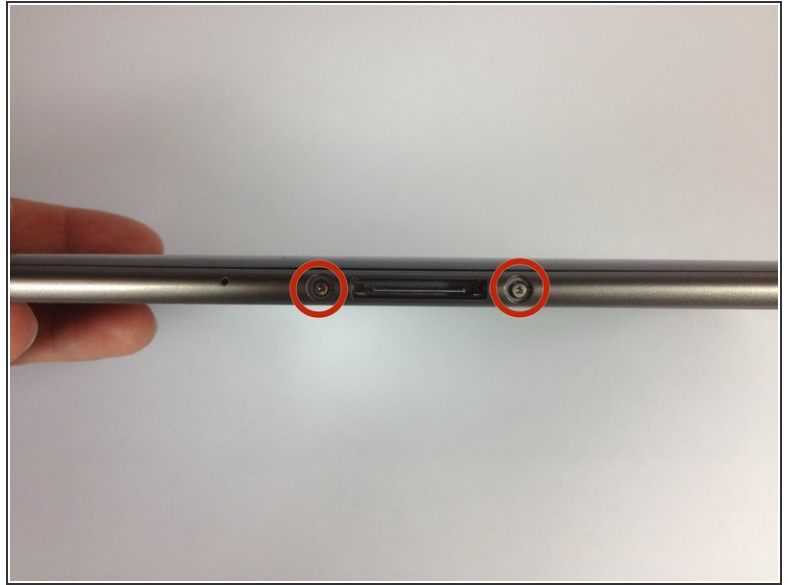
- [iFixit Opening Picks set of 6](#) (1)
- [iFixit Opening Tools](#) (1)
- [Y1 Tri-point Screwdriver](#) (1)
- [Phillips #00 Screwdriver](#) (1)



PARTS:

- [Samsung Galaxy Tab 10.1 Rear Camera](#) (1)

Step 1 — Rear Panel



- Place the bottom of the tablet towards you.
- Remove the two 4.1 mm screws near the charge port with a Tri-Wing screwdriver.
- ⓘ On model GT-P7500, this step is omitted, as that model doesn't have these 2 screws.

Step 2



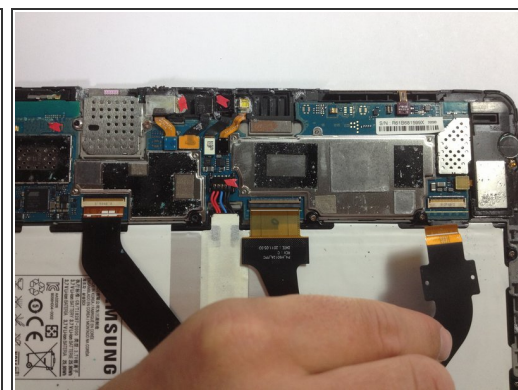
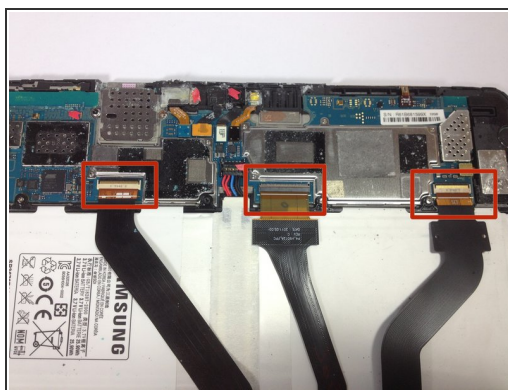
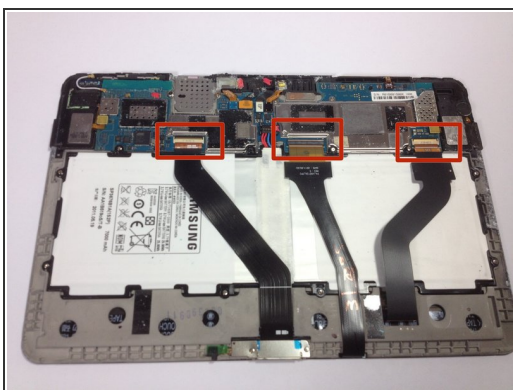
- Start in the middle of the left side and insert a plastic opening tool between the rear panel and the front panel assembly.
 - Carefully run the plastic opening tool along the left and top edge to pry the rear panel away from the rest of the device.
 - ⓘ Place opening picks along the side you have already pried open to keep the back panel detached from the rest of the device.
- ⚠ Be sure to work carefully, as prying too firmly can crack the screen.

Step 3



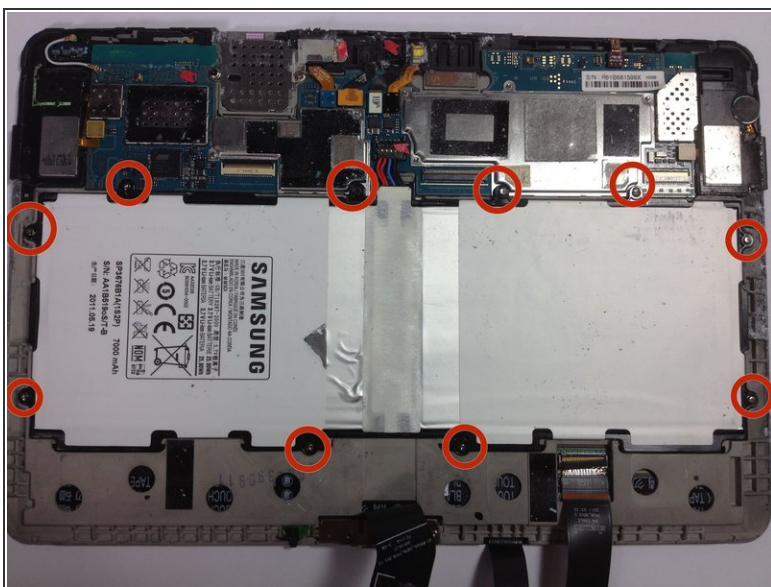
- Using the plastic opening tools, continue to carefully run along the right and bottom edge, and then lift the screen from the back panel.

Step 4 — Battery



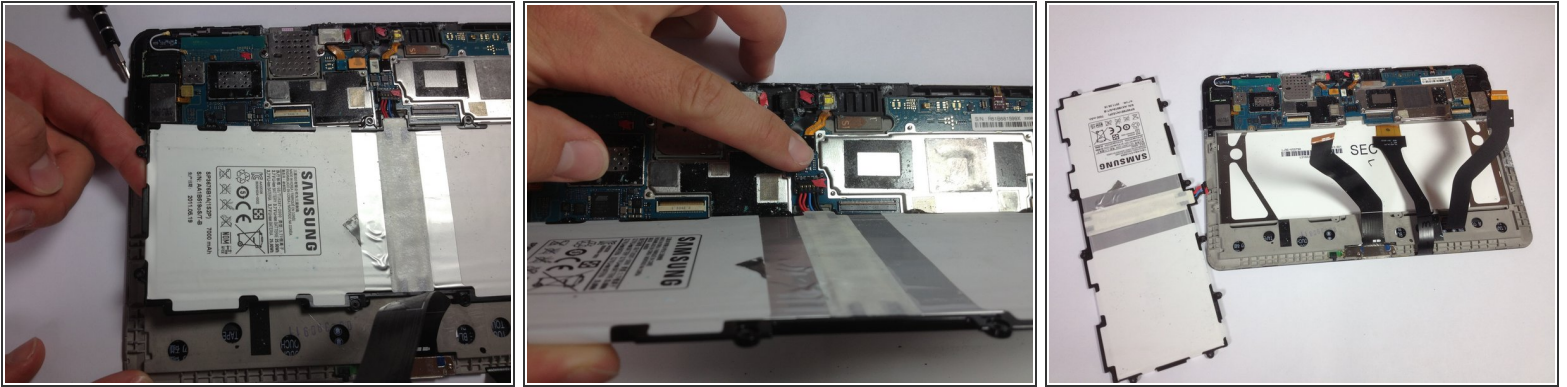
- Flip up the retaining flaps on the ZIF connectors that secure the three large ribbon cables.
- Carefully pull the three ribbon cables from their sockets on the motherboard.

Step 5



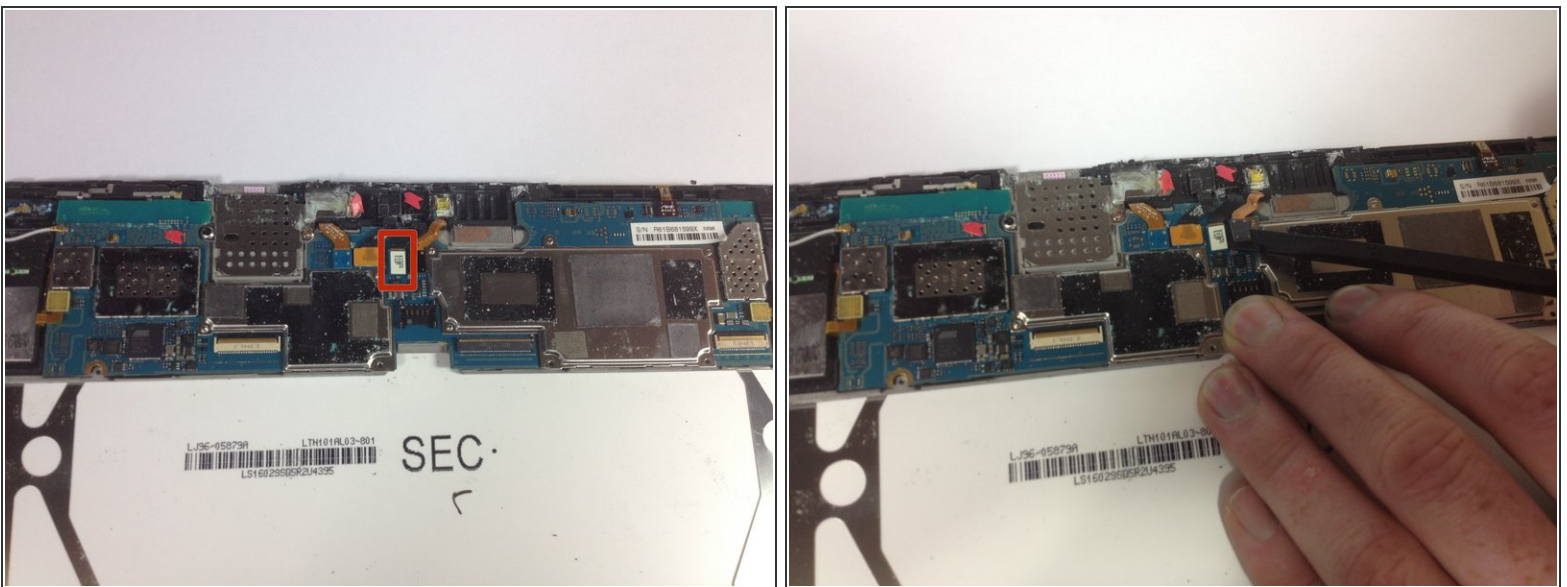
- Remove the ten 3 mm Phillips #00 screws surrounding the battery.

Step 6



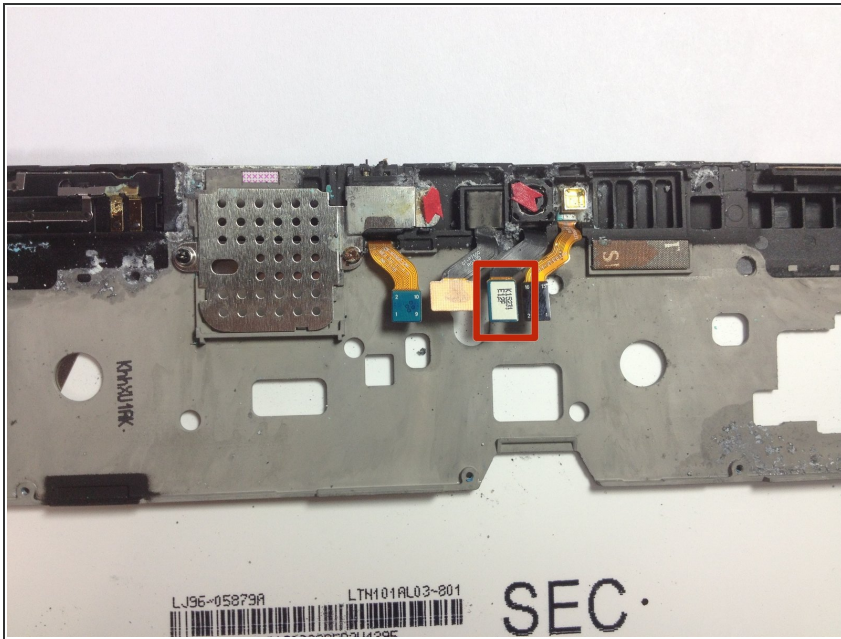
- Lift the edge of the battery up with your finger or a spudger.
- Detach the battery by holding the motherboard down while gently lifting the battery up.

Step 7 — Rear Facing Camera



- Use the spudger to pry up on the white connection of the rear camera wire.

Step 8



- Grab the white connection with your fingers and lift it up from its slot.
- ⓘ We have removed the motherboard in these pictures to make it easier to see, but it is not necessary to complete this step.

To reassemble your device, follow these instructions in reverse order.