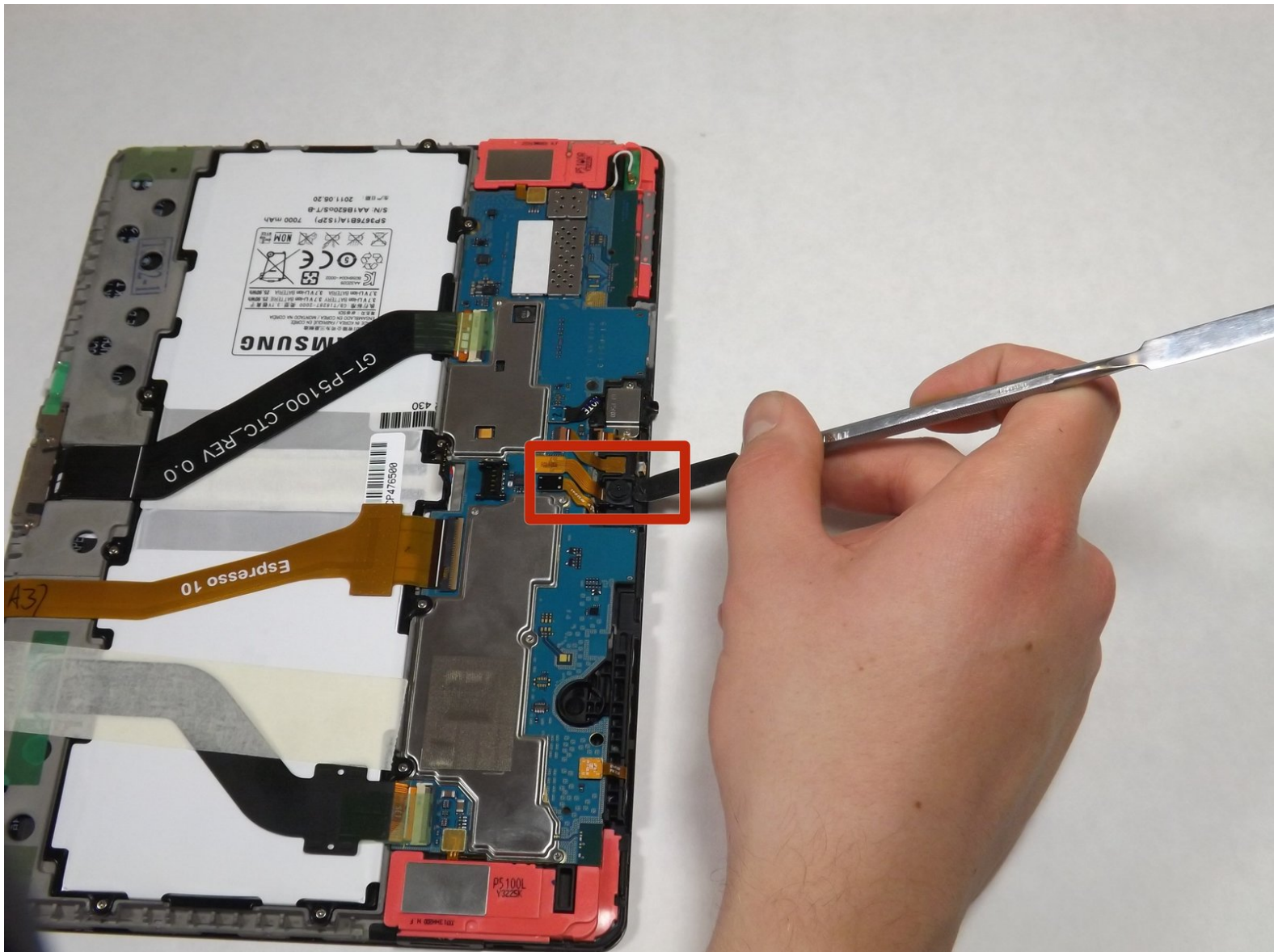




# Samsung Galaxy Tab 2 10.1 Front Camera Replacement

This guide will show you how to replace the front camera of your tablet.

Written By: Amy Tsai



## INTRODUCTION

If you cannot take pictures with your device, you may need to replace the camera.

In this guide, you will learn how to replace the front camera.

**Caution:** Some images display the steps using a metal spudger. Use the heavy-duty spudger instead to avoid damaging your circuits.

For more information on connectors, visit [this page](#).



### TOOLS:

- [iFixit Opening Tools](#) (1)
- [Heavy-Duty Spudger](#) (1)




### PARTS:

- [Galaxy Tab 2 10.1 Front Camera](#) (1)
- [Galaxy Tab 2 10.1 Rear Camera](#) (1)

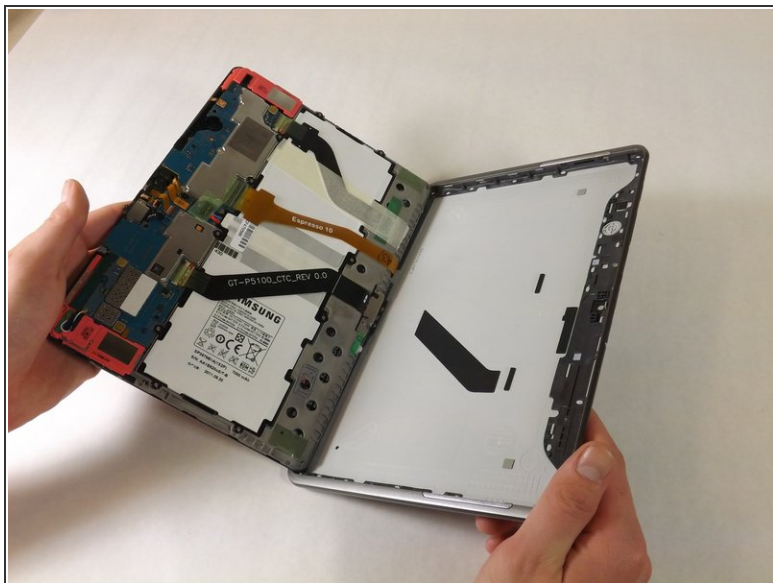
## Step 1 — Back Cover



 The plastic opening tool may break during this step. You may need to use the heavy duty spudger instead.

- Insert the plastic opening tool between the glass screen and the back cover so the curved end of the plastic opening tool is under the glass. Gently pry the back cover away from the glass screen.
- Be sure to lift the entire display from the body and that you are not are lifting the glass from the display. You will need to reach down a little further for the correct removal.
- Continue inserting the plastic opening tool around the whole device screen to completely separate the back cover from the glass screen.

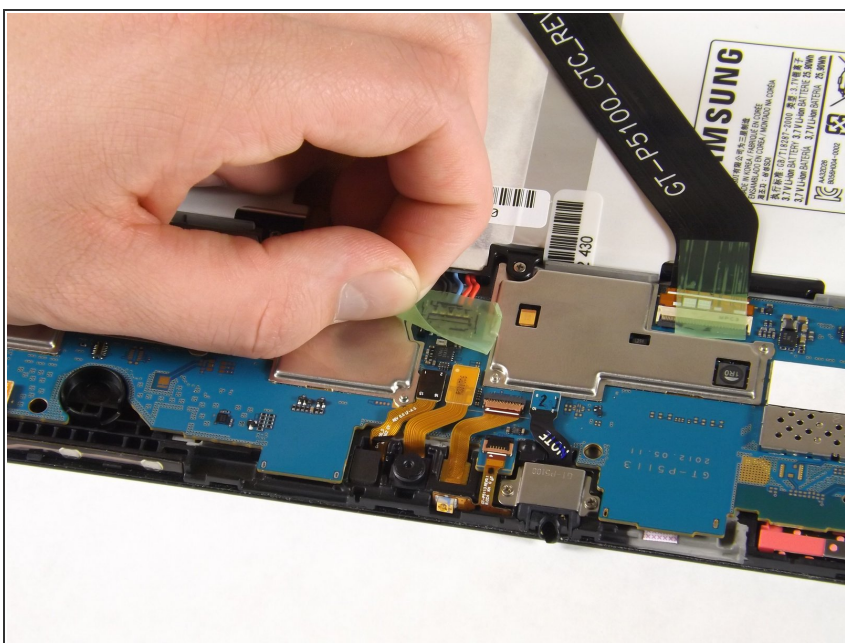
## Step 2



- Gently lift the screen up with your finger.

**i** If the screen will not separate from the back cover, try repeating step 1.

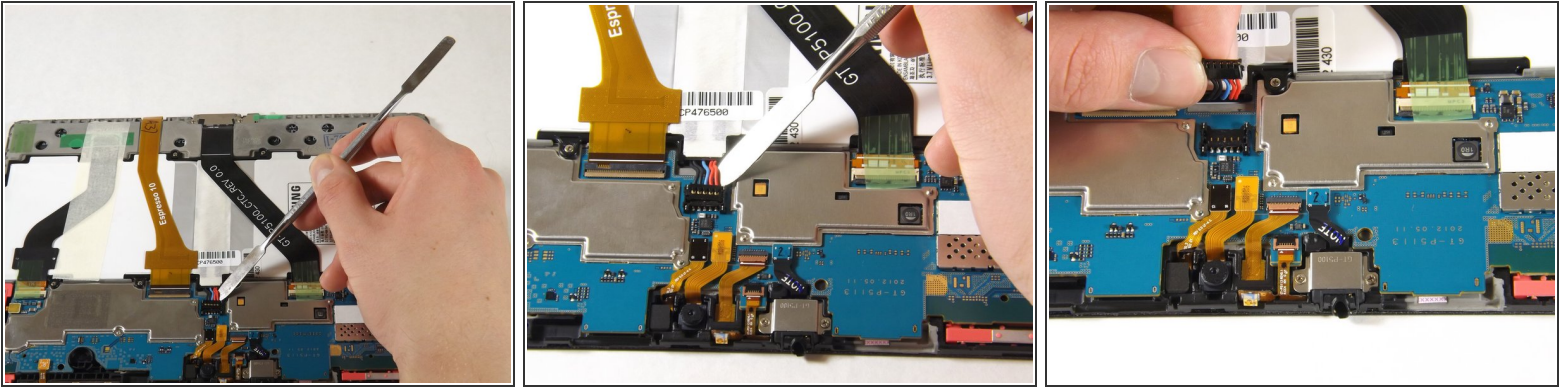
## Step 3 — Battery Disconnect



- Using your fingers, remove the green tape covering the battery connector.



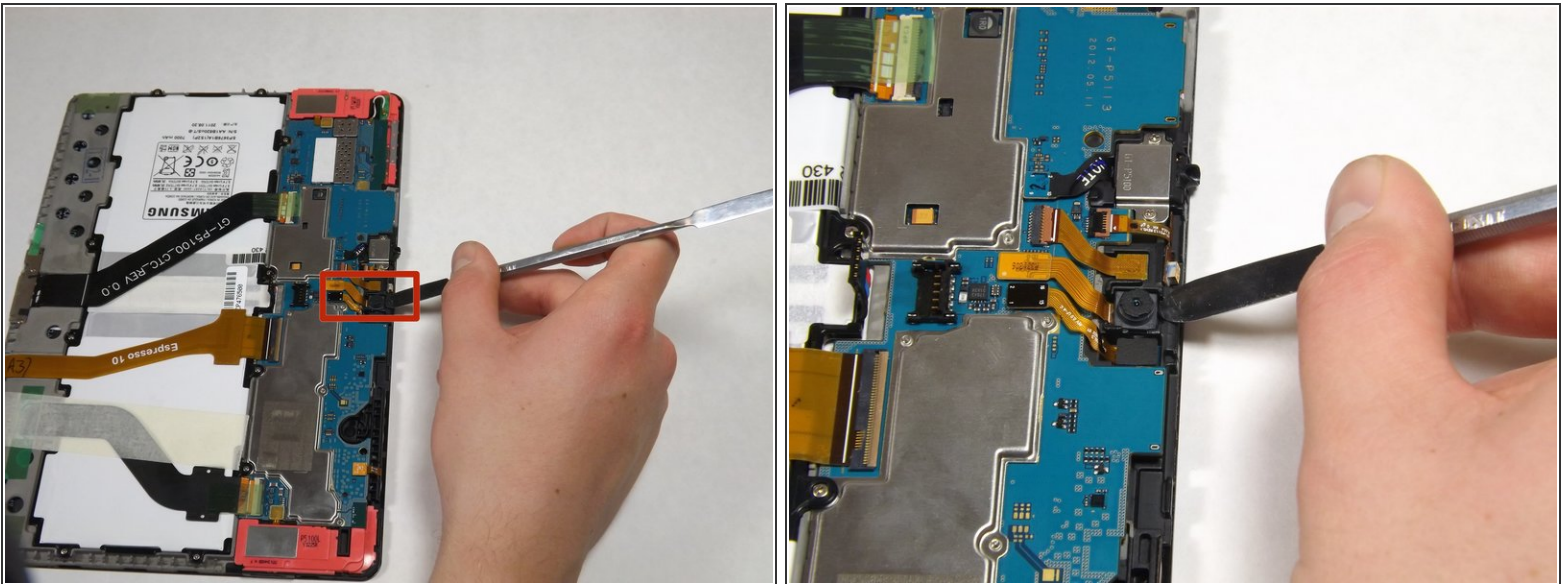
## Step 4



- Insert the flat end of the heavy-duty spudger between the wires and underneath the battery connector. Carefully lift the black battery connector up to disconnect it from the motherboard.

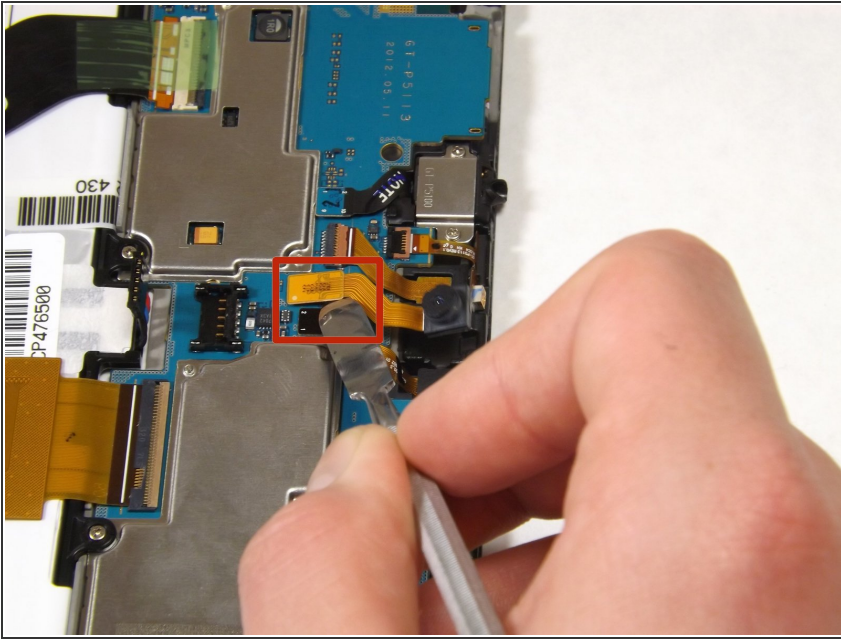
⚠ The metal spudger shown in the photo is not recommended due to the possibility of an electrical short. Use an ESD-safe tool, such as a heavy-duty (nylon) spudger.

## Step 5 — Front Camera



- Gently lift the camera from its socket with the flat end of the heavy-duty spudger.

## Step 6



- Gently lift the gold cable connector with the flat end of the heavy-duty spudger to disconnect it from the device.

To reassemble your device, follow these instructions in reverse order.