



# Samsung Galaxy Tab 2 7.0 Auxiliary Port Replacement

Replacing your damaged headphone jack.

Written By: Katija Tarailo



## INTRODUCTION

If you have damaged your auxiliary port because of general wear and tear or accidental damage, you can easily replace it so that you can get back to enjoying your music. However, keep track of all of the components along the way, as some are very small and very easy to lose.



### TOOLS:

- [Heavy-Duty Spudger](#) (1)
- [Phillips #000 Screwdriver](#) (1)



### PARTS:

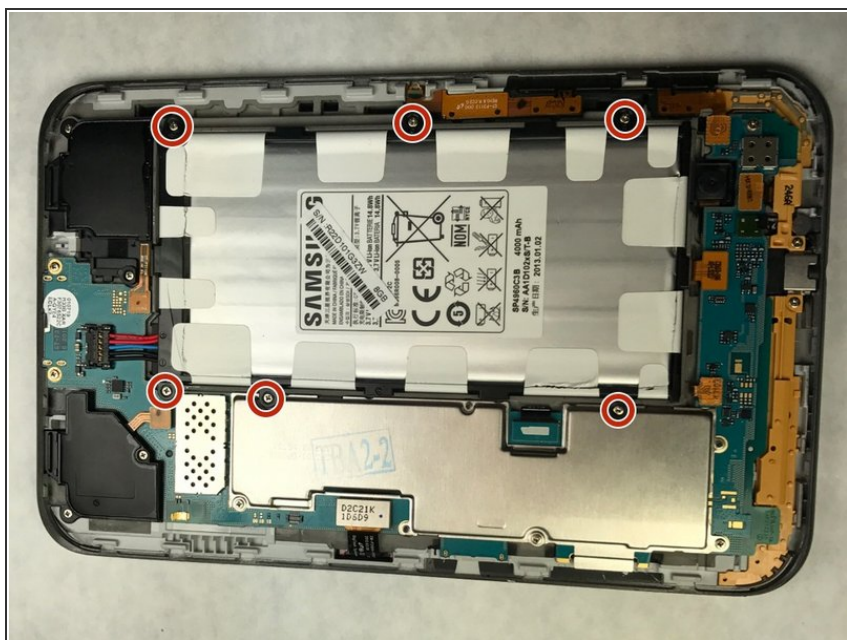
- [Galaxy Tab 2 7.0 Headphone Jack](#) (1)

## Step 1 — Auxiliary Port



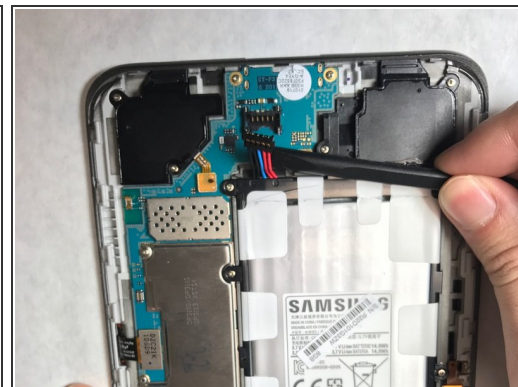
- Using a nylon spudger or flat plastic opening tool, pry open the back of the device.
- ❗ It is easy to begin this process by starting at the micro SD card insert.

## Step 2



- Using a Phillips head screwdriver, remove the 6 4mm screws holding the battery on the device.

## Step 3



- Gently detach the set of wires clips connecting the battery to the device using a nylon spudger.
- Remove the battery and set it aside.

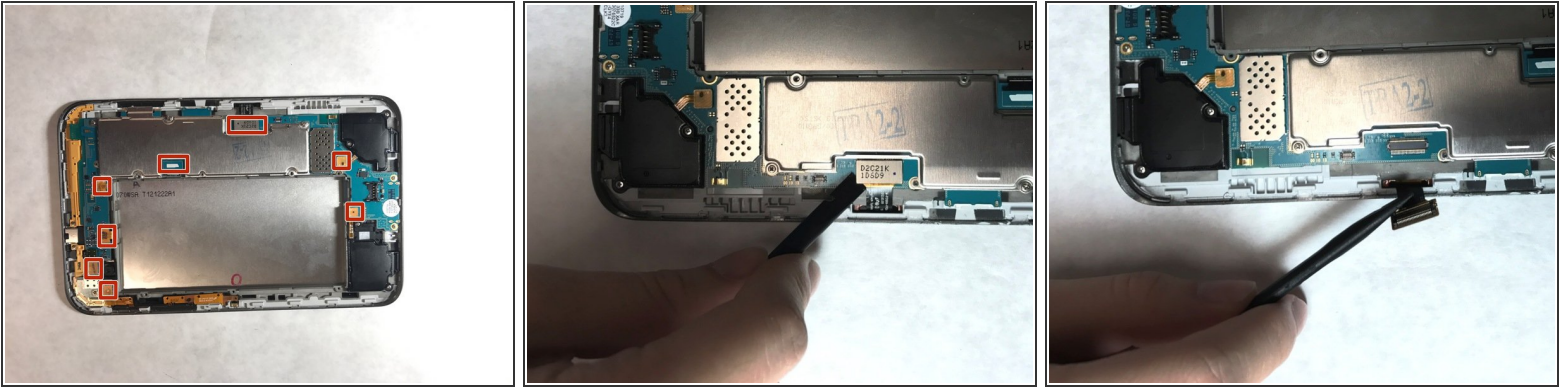
## Step 4



- Using a Phillips head screwdriver, remove the 6 4mm screws holding the motherboard in the device.



## Step 5



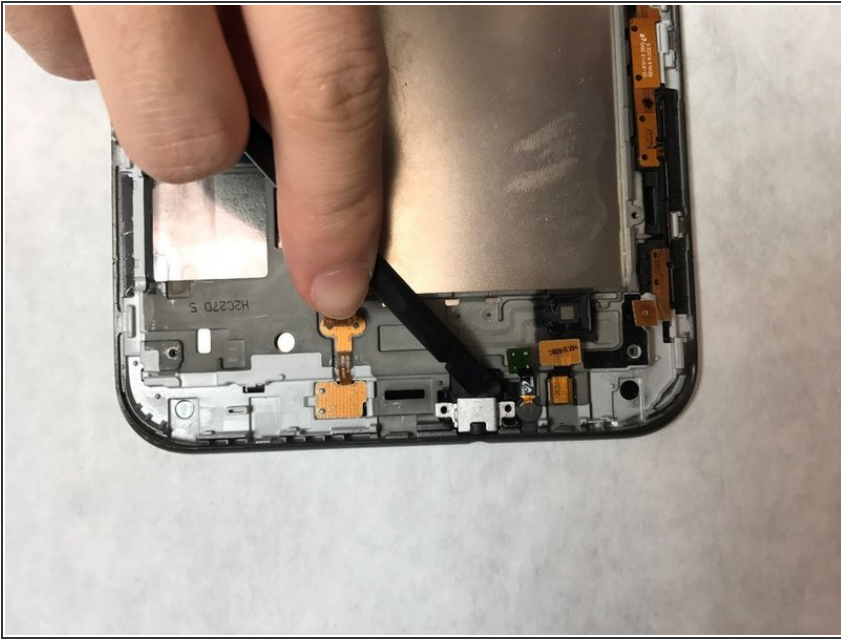
- Locate the flex cables attached to the motherboard. Using a nylon spudger, gently detach each flex cable from the motherboard.
- ⚠ Be careful when detaching flex cables. Excessive force and sharp tools have the potential to damage these components.
- Lift the motherboard from the device and set it aside.

## Step 6



- Locate the yellow brackets at the bottom of the device.
- Using a phillips head screwdriver, remove the single 4mm screw on each bracket, located on either side of the auxiliary port.
- Lift the brackets from the device and set them aside.
- ⓘ You may need to use a nylon spudger, or any flat tool, to lift the brackets out of their place.

## Step 7



- Using a nylon spudger, or any flat tool, gently pry and lift the small metal covering off of the auxiliary port.
- ⓘ This will reveal a rubber covering.

## Step 8



- Using a nylon spudger, or any flat tool, gently pry and lift the small rubber covering to expose the auxiliary port.
- ⓘ This will reveal the auxiliary port.

## Step 9



- Lift the auxiliary port with a nylon spudger.
- Remove the auxiliary component.
- ⓘ It is easiest to lift this piece from the innermost side of the port, opposite of the opening.

To reassemble your device, follow these instructions in reverse order.