



# Samsung Galaxy Tab 2 7.0 Digitizer Replacement

This is my first guide so bear with me. This is step by step how to repair the front glass assembly.

Written By: Wesley Burson





## TOOLS:

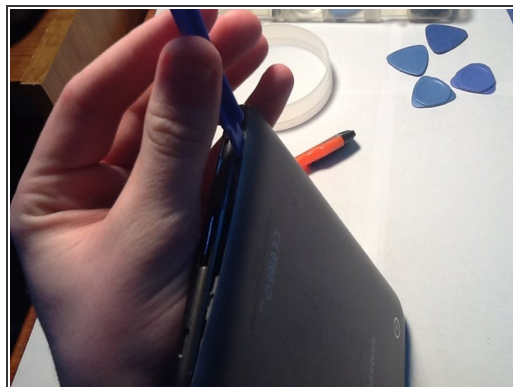
- [Heat Gun](#) (1)
- [Phillips #000 Screwdriver](#) (1)
- [Tweezers](#) (1)
- [Flathead Screwdriver](#) (1)
- [Anti-Static Wrist Strap](#) (1)
- [iFixit Opening Picks set of 6](#) (1)



## PARTS:

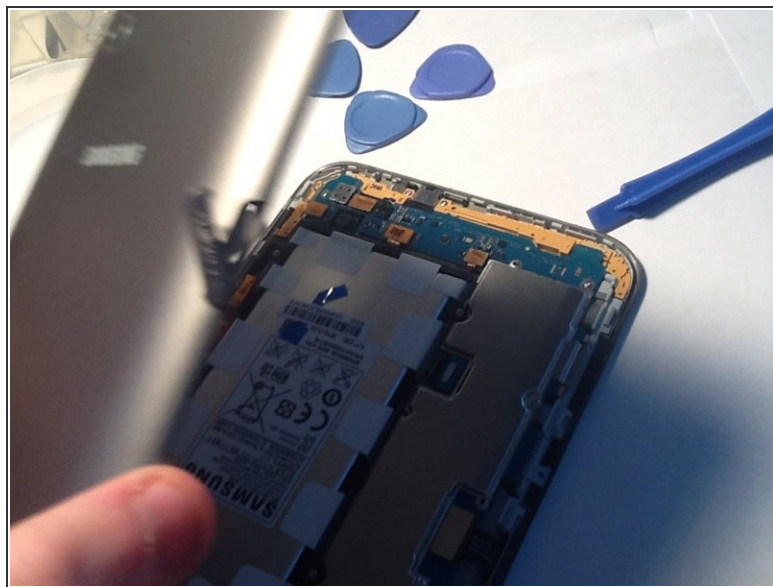
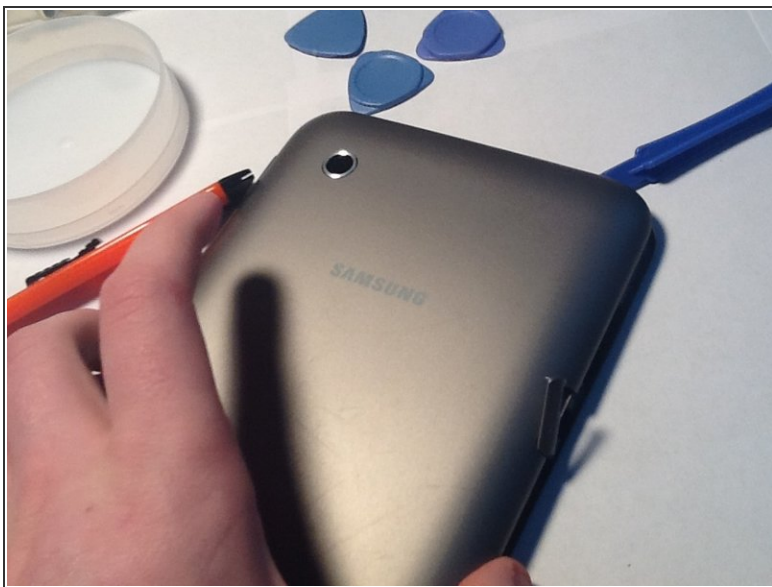
- [Samsung Galaxy tab 2 7.0 digitizer](#) (1)
- [Samsung galaxy tab 2 7.0 glue](#) (1)

## Step 1 — Digitizer



- Carefully start at the bottom of the tab prying the rear casing.
- ⓘ Be careful prying, if you apply too much pressure you can crush the back.

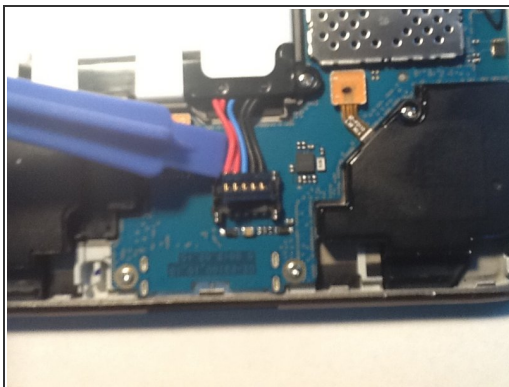
## Step 2



- Lift the back plate away from the tab.



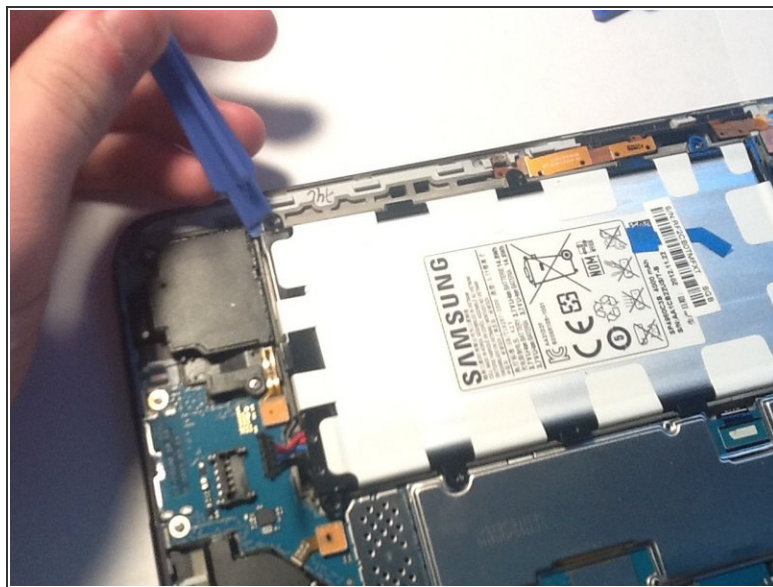
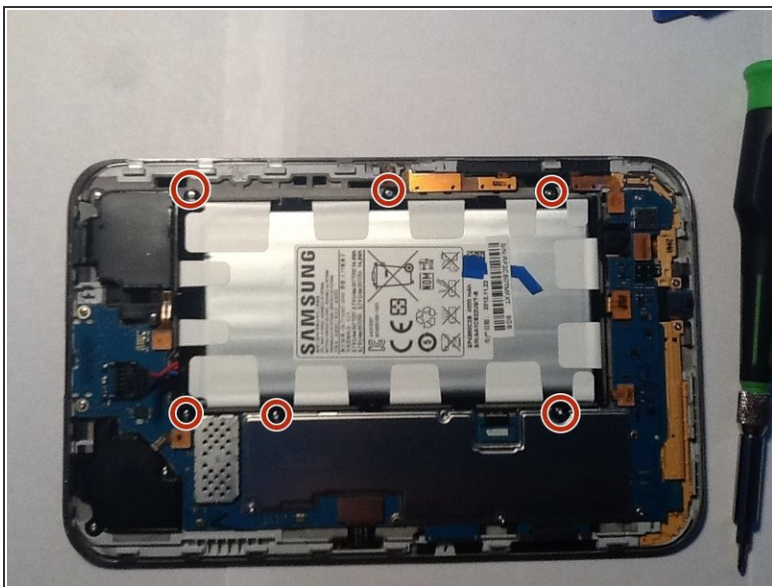
## Step 3



- disconnect the battery by prying from underneath where the wires attach.

⚠ be careful prying. if you pry the connector you may rip it from the board.

## Step 4



- Remove the 6 screws holding in the battery]
- Then the battery should lift out

## Step 5



- Next we will be disconnecting the cables shown in red

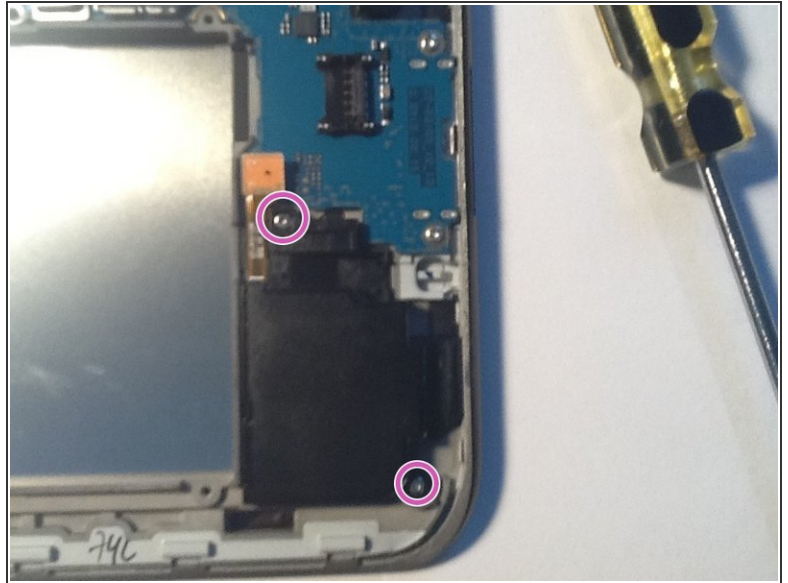
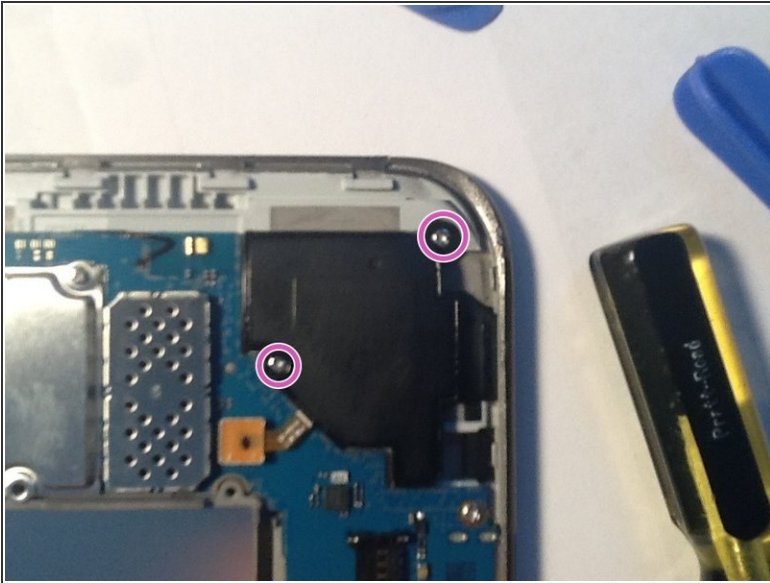
## Step 6



- the speaker connectors will be first.
- Use a plastic opening tool to pop the connector off
- repeat this for the other connectors show on previous step

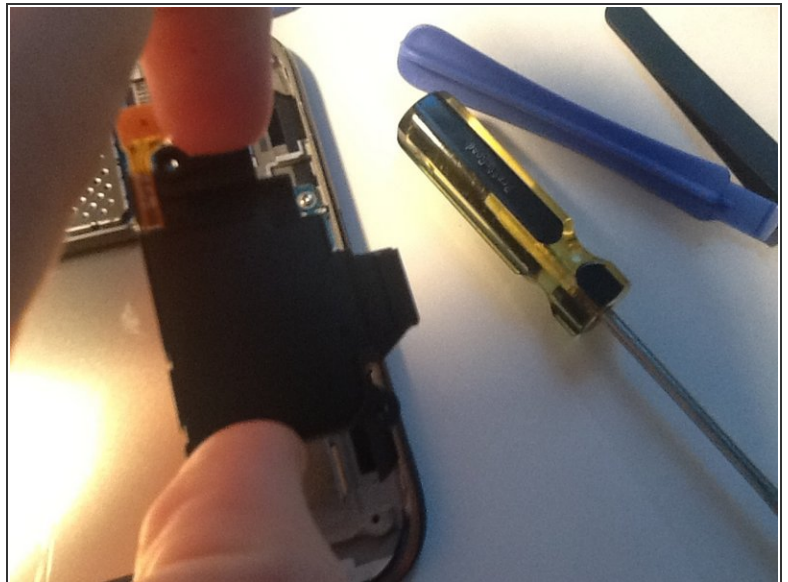
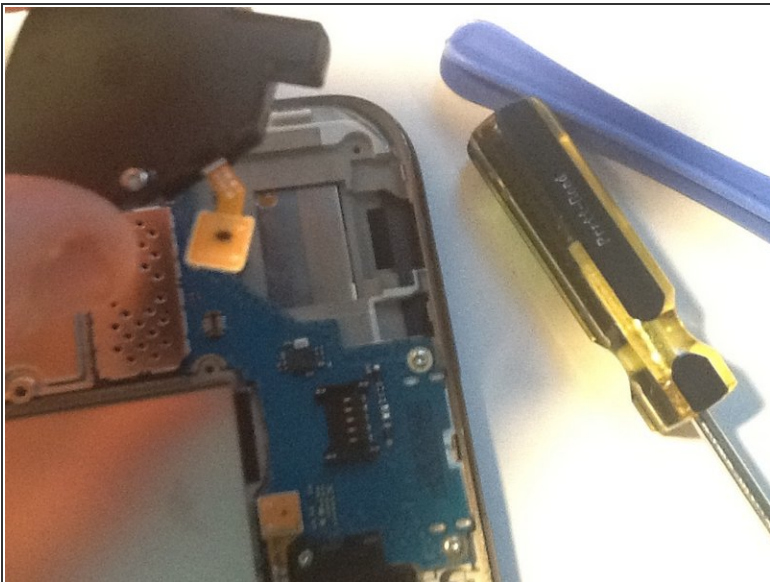


## Step 7



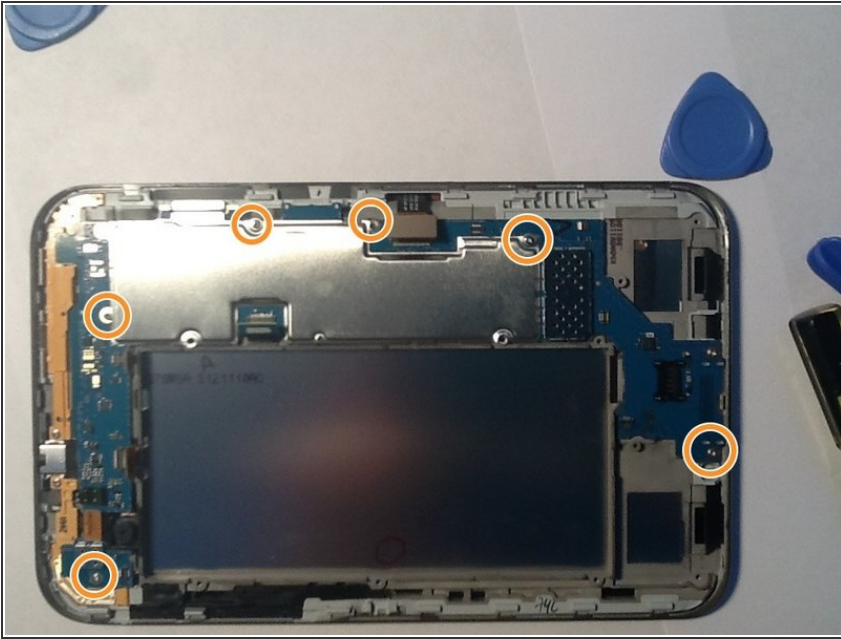
- remove the screws holding the speakers in.

## Step 8



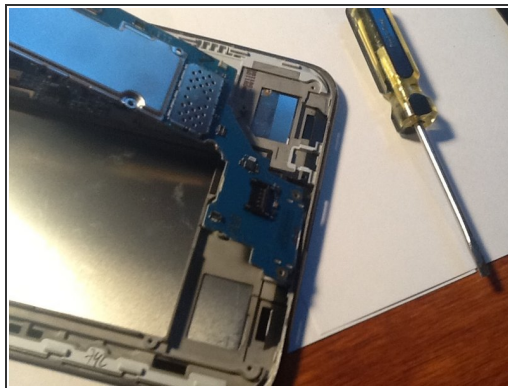
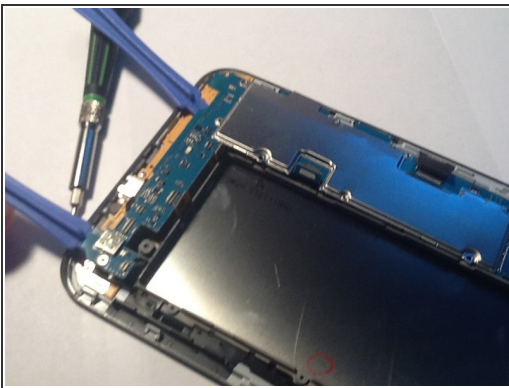
- lift both speakers out.

## Step 9



- remove the motherboard screws as shown

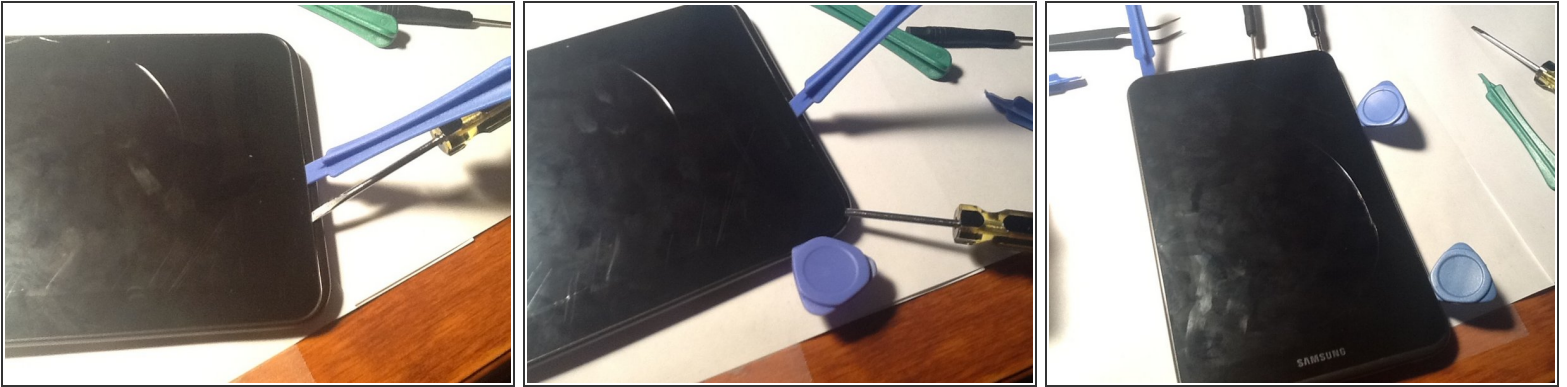
## Step 10



- lift the motherboard out of the device



## Step 11

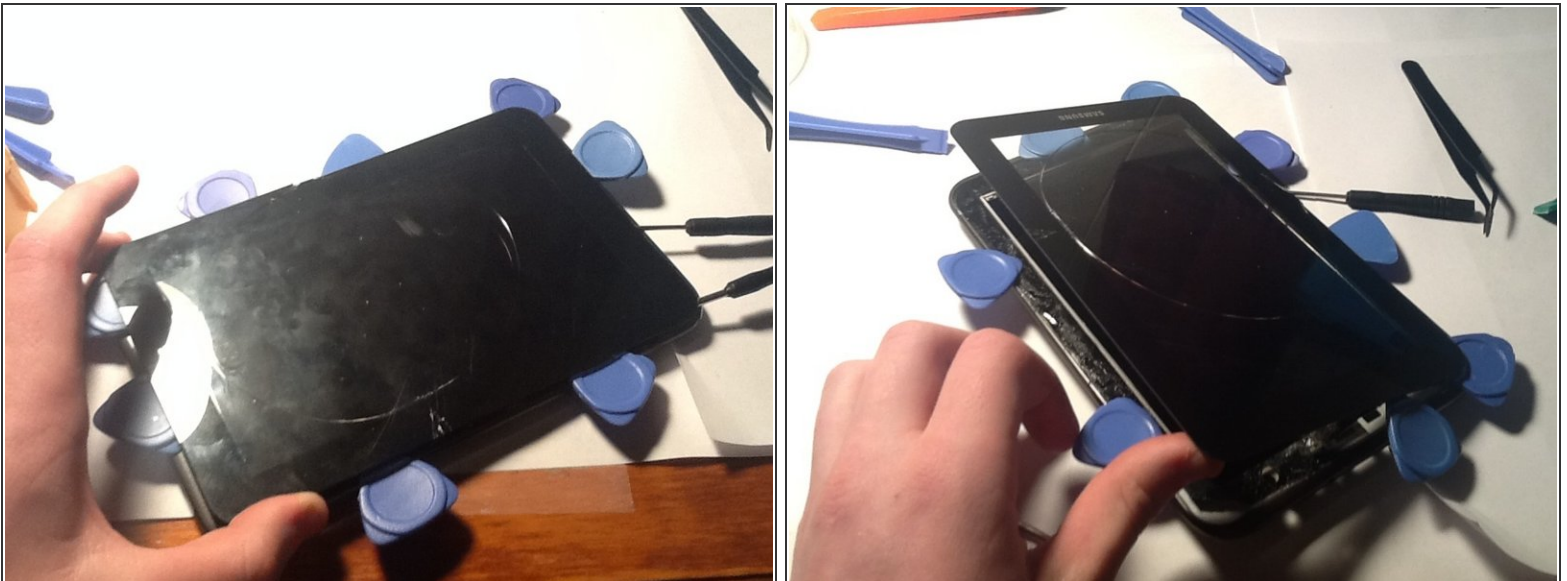


- flip it over and heat the glass using a heat gun, and insert your plastic opening tool.
- slowly work your way around the device reheating as needed.

⚠ make sure the tool does not go too far into the device as it can break the lcd.

⚠ When heating, don't use too much heat as you can burn the lcd.

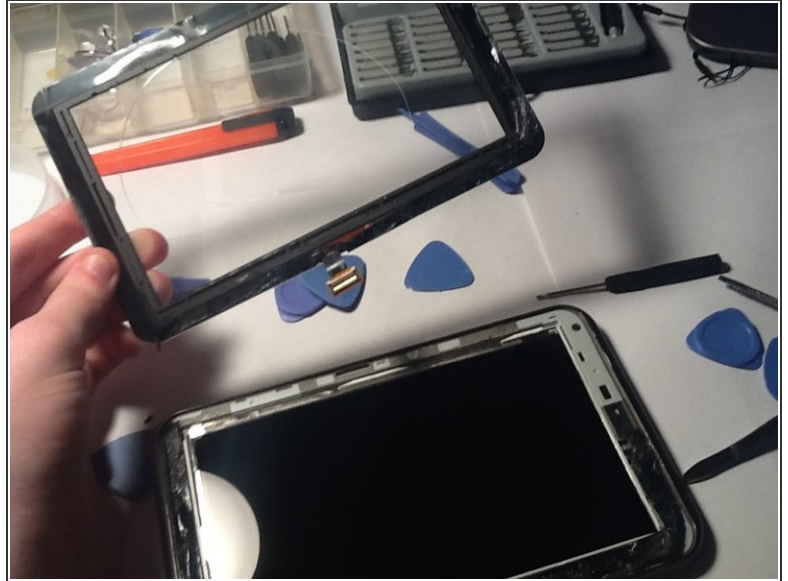
## Step 12



- after filling it with a world share of plastic tools, lift the screen off.

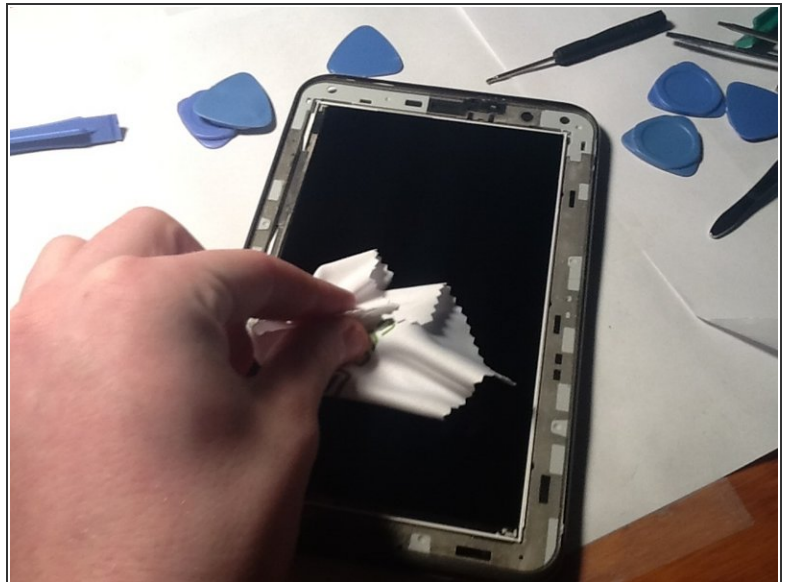
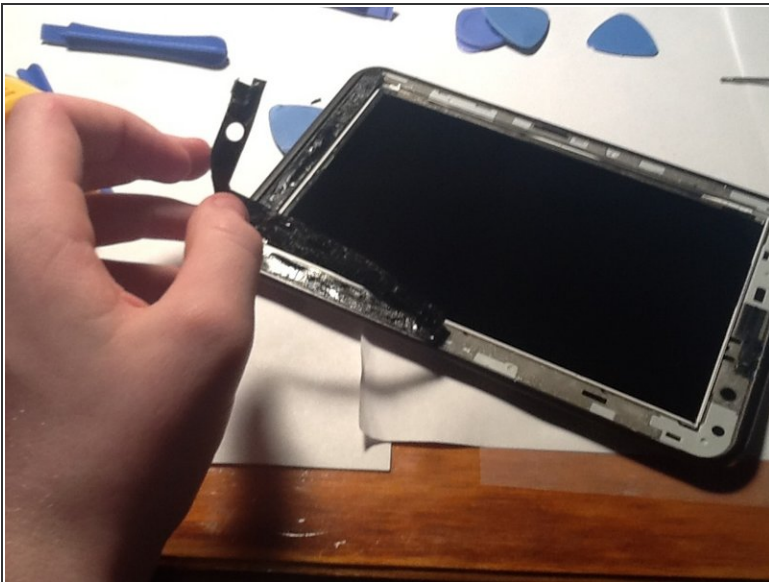


## Step 13



- feed the connector out of the frame.

## Step 14



- remove the old adhesive.
- and clean the glass off the lcd

## Step 15



- reapply adhesive and feed the cable in the frame.
- Then do the whole guide in reverse minus the prying.

To reassemble your device, follow these instructions in reverse order.