



Samsung Galaxy Tab 3 10.1 Rear-Facing Camera Replacement

Written By: Corey Brown





TOOLS:

- [Phillips #000 Screwdriver](#) (1)
- [iFixit Opening Picks set of 6](#) (1)
- [Spudger](#) (1)
- [Tweezers](#) (1)
- [Nylon Tipped Tweezers](#) (1)



PARTS:

- [Galaxy Tab 3 10.1 Rear Camera](#) (1)

Step 1 — Rear Case



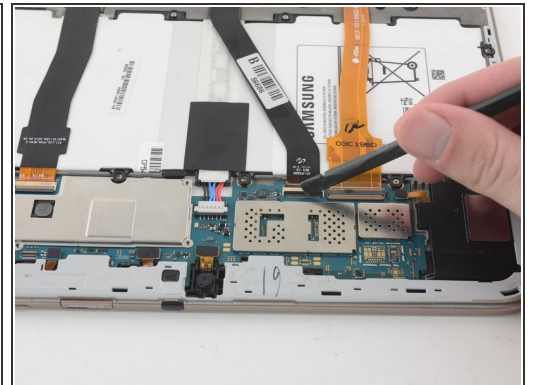
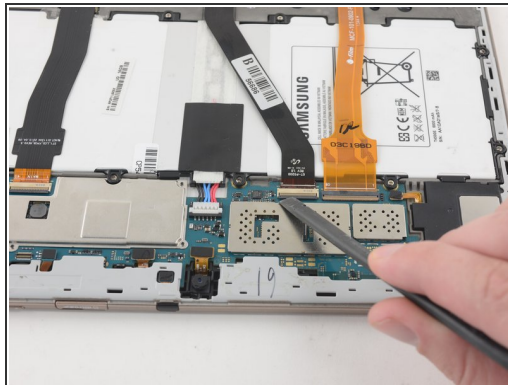
- Insert an opening pick between the rear case and the plastic rim.
- ⓘ You may need to add multiple picks to detach the clips.
- Slide the pick along the edge of the rear case until you release the plastic clips attaching the rear case to the display.
- Continue to slide the pick around the edge of the rear case until all clips are released.

Step 2



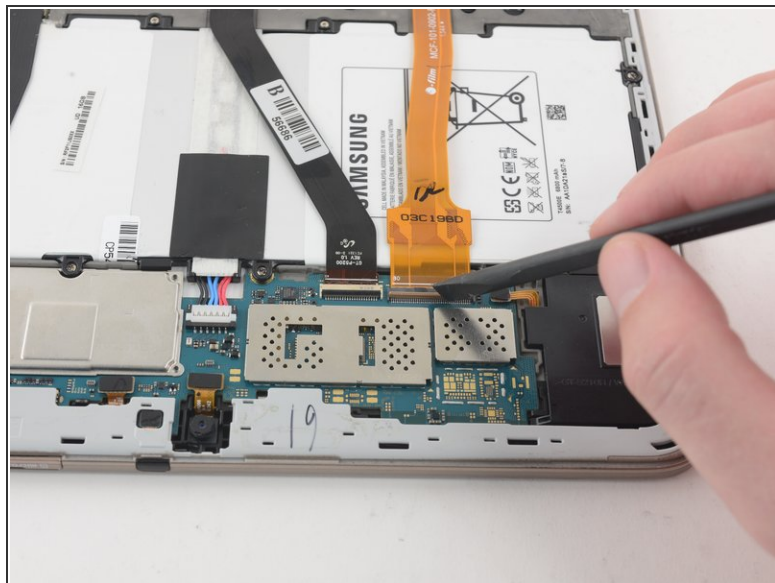
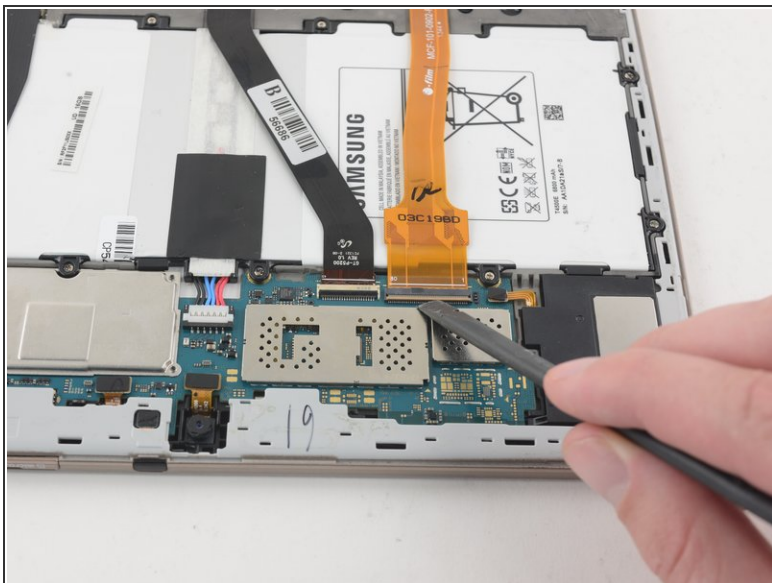
- Lift the case up to remove it.

Step 3 — Battery



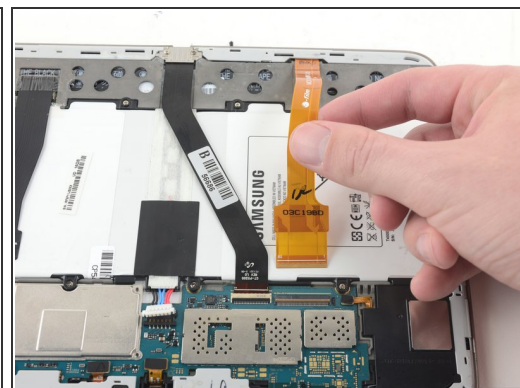
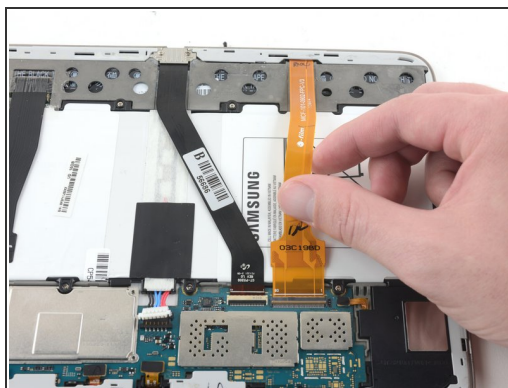
- Use the flat end of a nylon spudger to pry up the **black** plastic tabs securing the two ZIF connectors.

Step 4



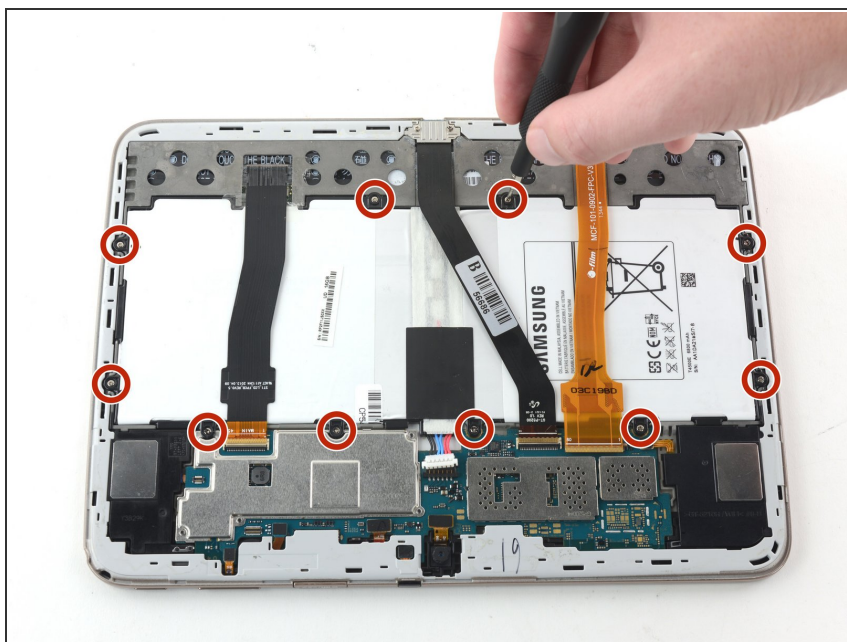
- Use the flat end of a nylon spudger to pry up the **brown** plastic tab securing the orange ribbon cable.

Step 5



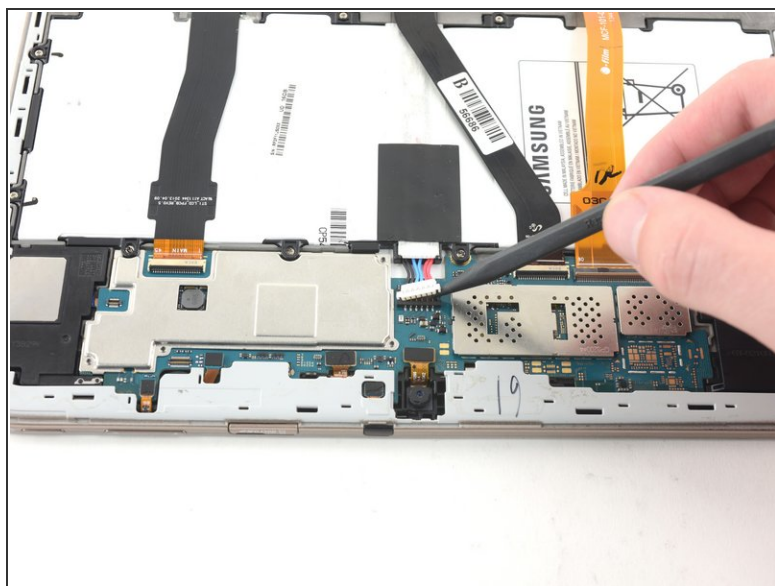
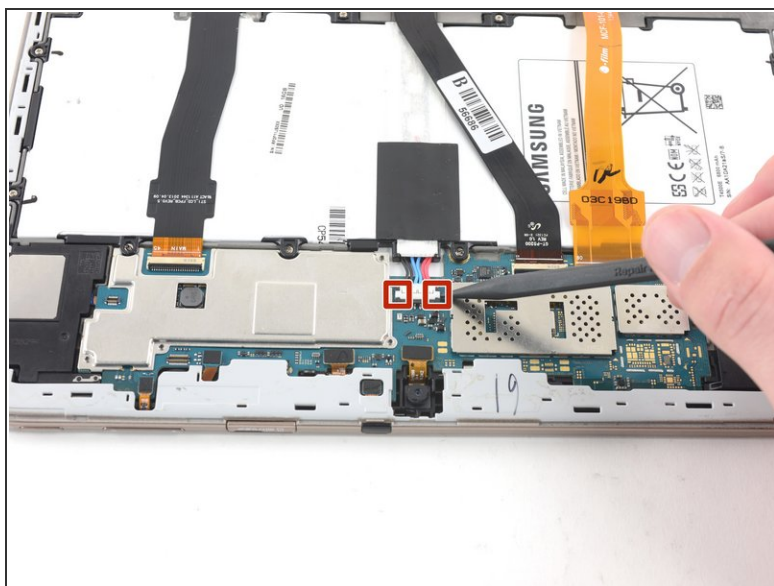
- Remove all three ribbon cables by gently pulling the cables away from the ZIF connectors.

Step 6



- Use a Phillips #000 screwdriver to remove the ten 3mm screws securing the battery to the chassis.

Step 7



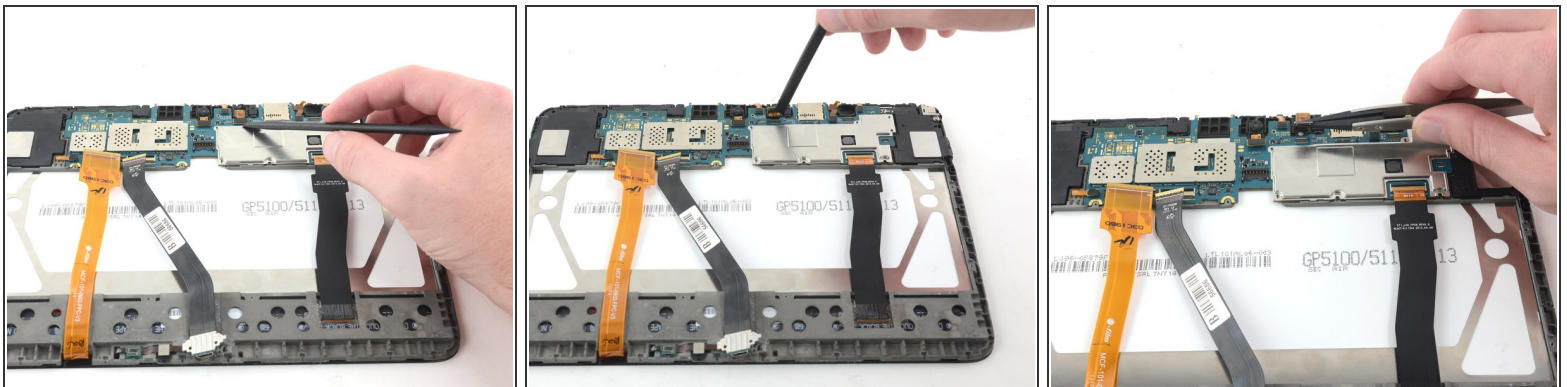
- Use the pointed end of a nylon spudger to pry the two battery connections away from the motherboard.

Step 8



- Lift with a nylon spudger to remove the battery.

Step 9 — Rear-Facing Camera



- Use the flat end of a plastic spudger to pry up the press-fit connector from the motherboard.
- Remove the camera by gently pulling upward with a pair of tweezers.

To reassemble your device, follow these instructions in reverse order.