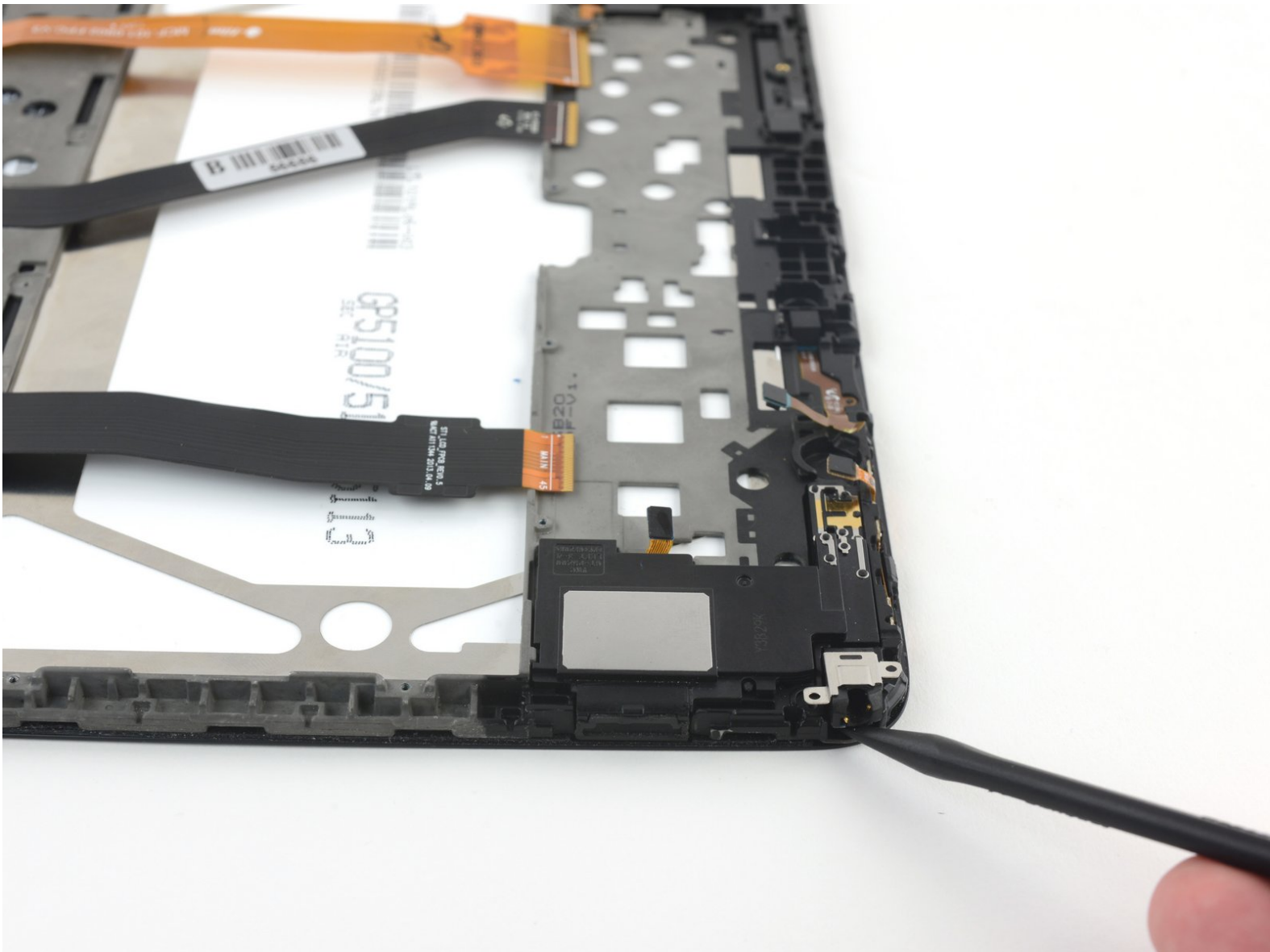




# Samsung Galaxy Tab 3 10.1 Speaker & Auxiliary Port Replacement

Written By: Corey Brown





## TOOLS:

- [Spudger](#) (1)
- [Phillips #000 Screwdriver](#) (1)
- [iFixit Opening Picks set of 6](#) (1)



## PARTS:

- [Galaxy Tab 3 10.1 Right Speaker](#) (1)
- [Galaxy Tab 3 10.1 Left Speaker](#) (1)

## Step 1 — Rear Case



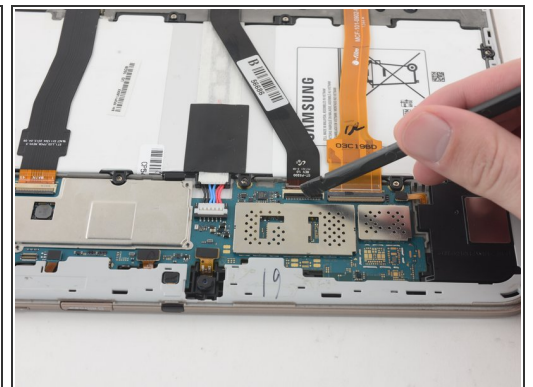
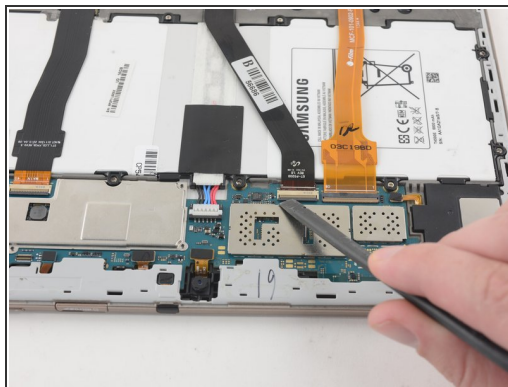
- Insert an opening pick between the rear case and the plastic rim.
- ⓘ You may need to add multiple picks to detach the clips.
- Slide the pick along the edge of the rear case until you release the plastic clips attaching the rear case to the display.
- Continue to slide the pick around the edge of the rear case until all clips are released.

## Step 2



- Lift the case up to remove it.

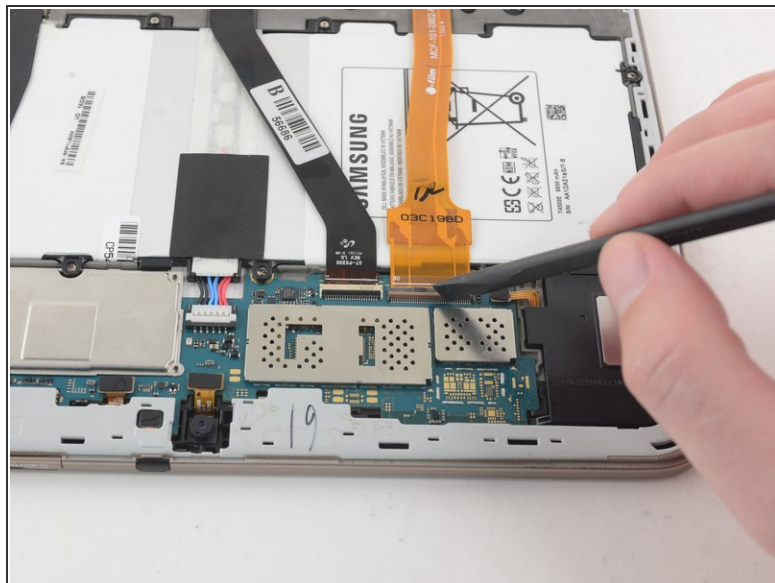
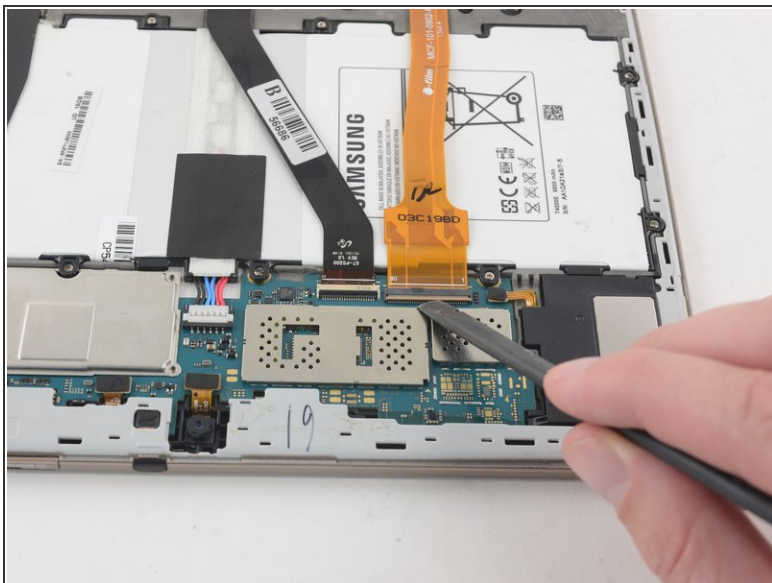
## Step 3 — Battery



- Use the flat end of a nylon spudger to pry up the **black** plastic tabs securing the two ZIF connectors.

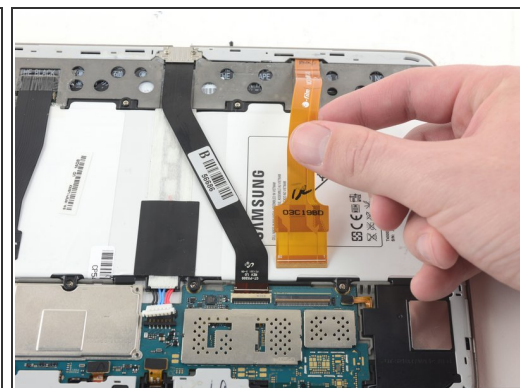
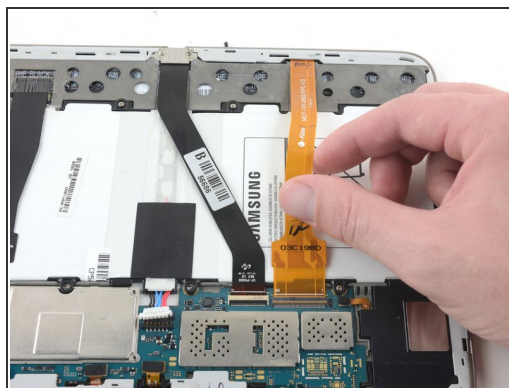


## Step 4



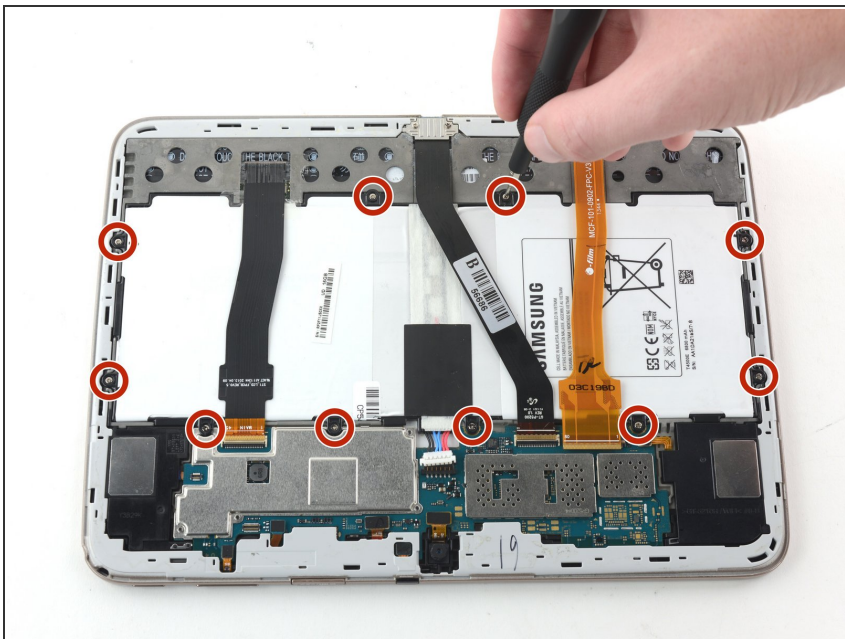
- Use the flat end of a nylon spudger to pry up the **brown** plastic tab securing the orange ribbon cable.

## Step 5



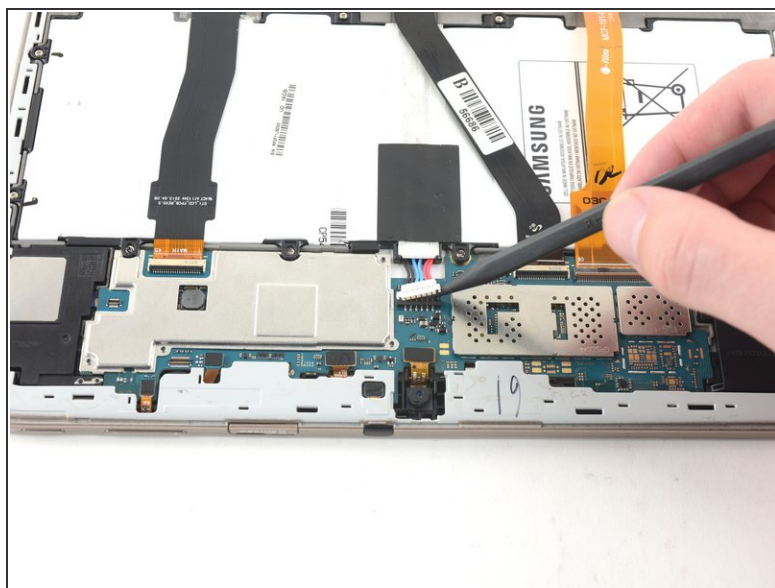
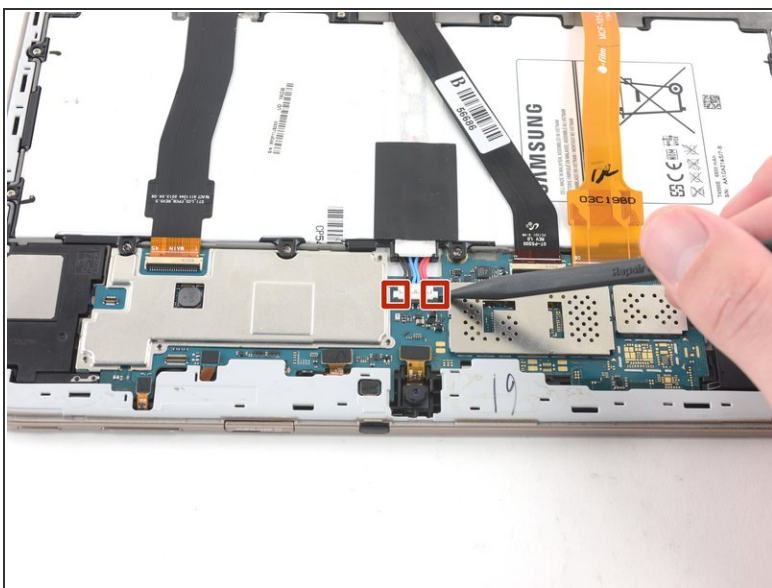
- Remove all three ribbon cables by gently pulling the cables away from the ZIF connectors.

## Step 6



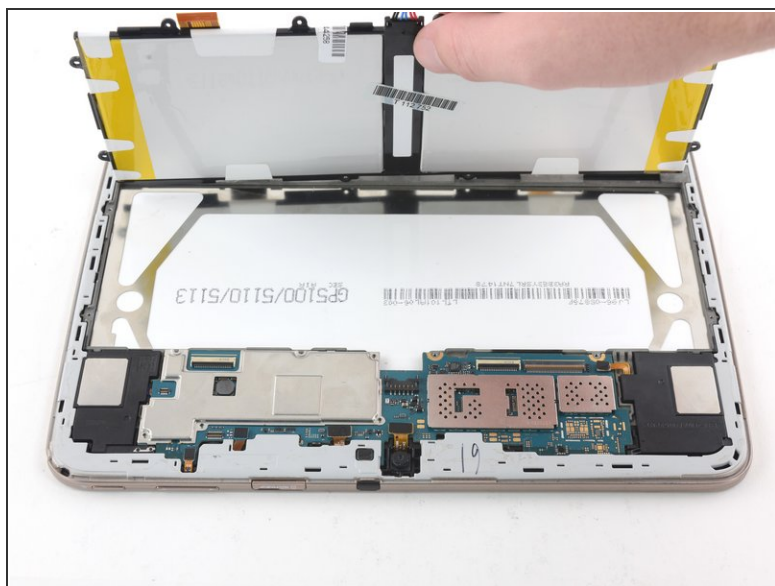
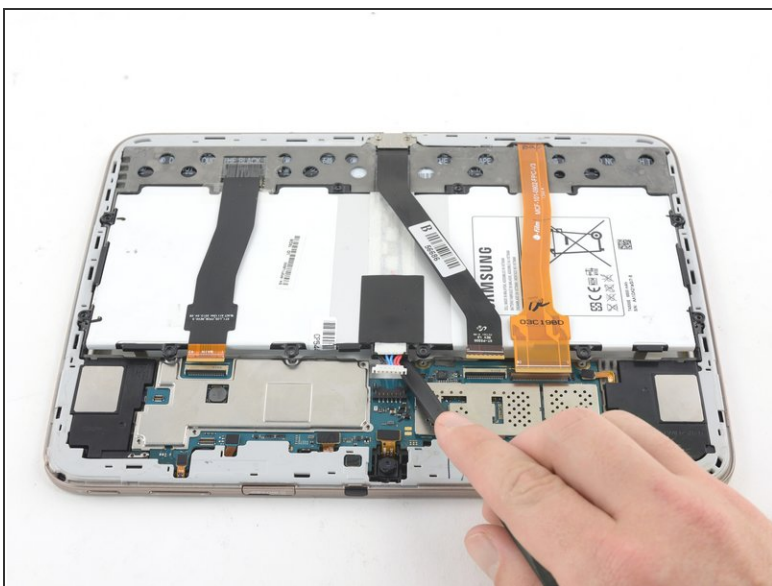
- Use a Phillips #000 screwdriver to remove the ten 3mm screws securing the battery to the chassis.

## Step 7



- Use the pointed end of a nylon spudger to pry the two battery connections away from the motherboard.

## Step 8



- Lift with a nylon spudger to remove the battery.

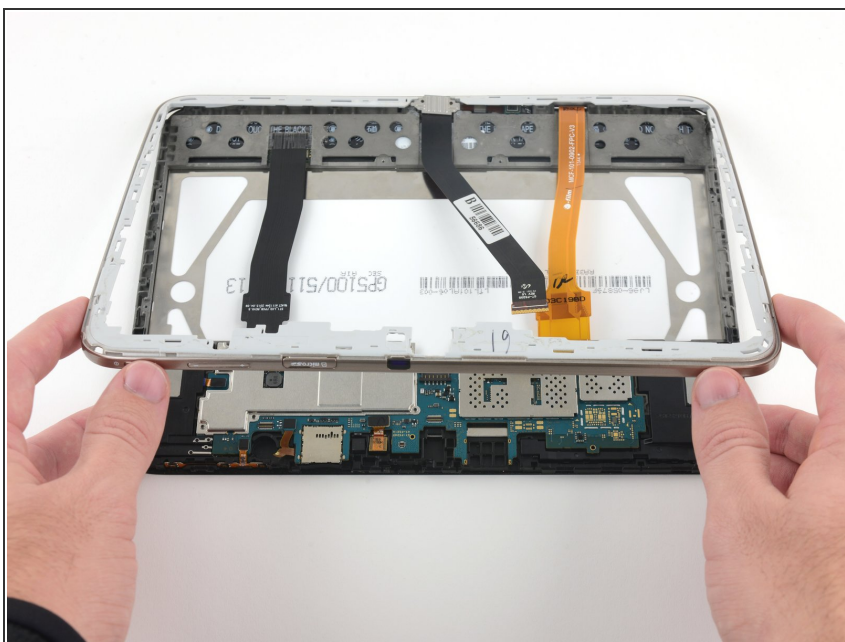
## Step 9 — Motherboard



- Insert an opening pick between the plastic frame and the screen.
- Slide the opening pick around the perimeter of the screen.
- ⓘ You will hear clicking noises as each plastic clip is released from the display chassis.



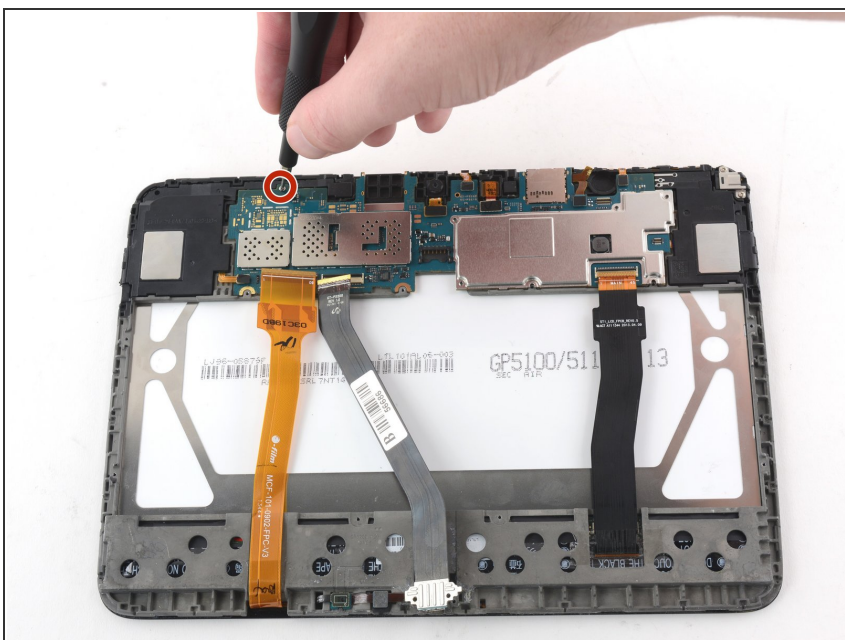
## Step 10



- Lift the plastic frame to remove.

⚠ Avoid the three delicate ribbon cables.

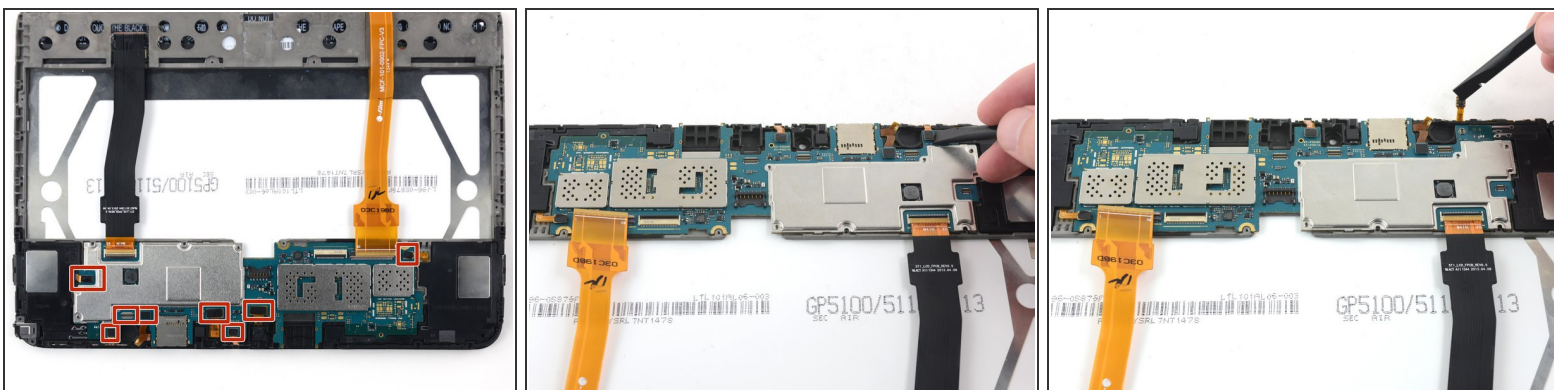
## Step 11



- Use a Phillips #000 screwdriver to remove the 3mm screw attaching the motherboard to the display chassis.

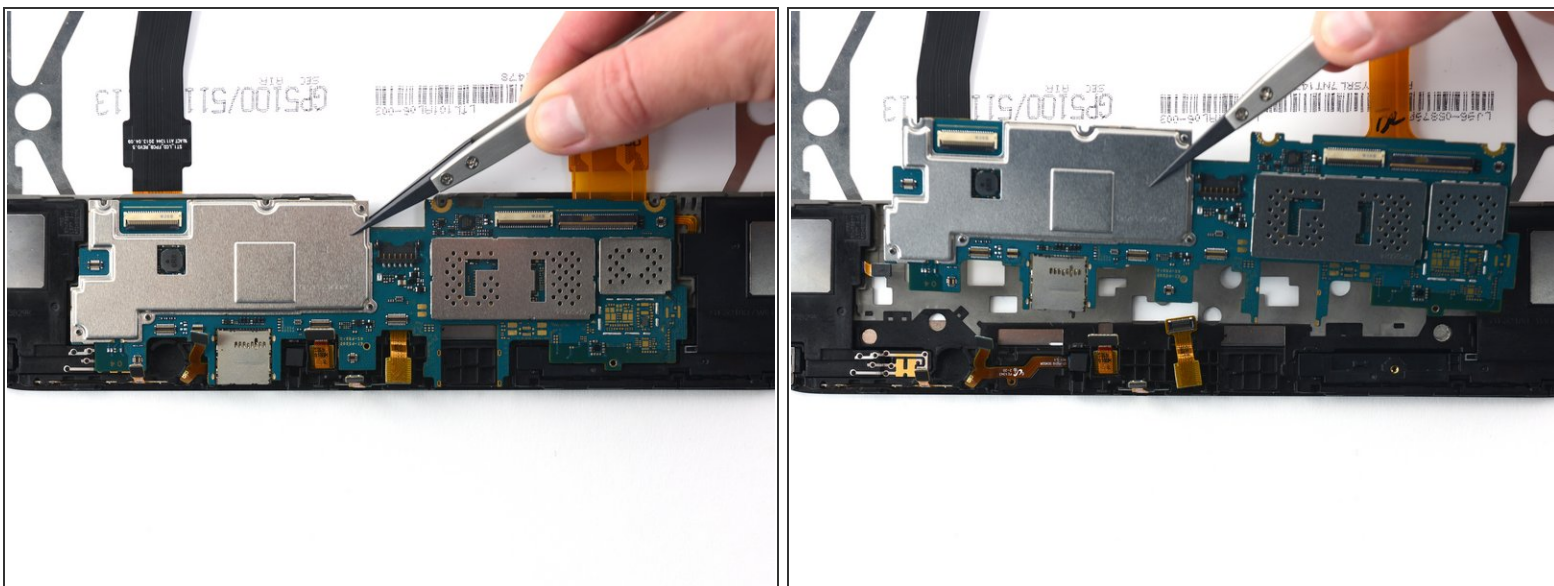


## Step 12



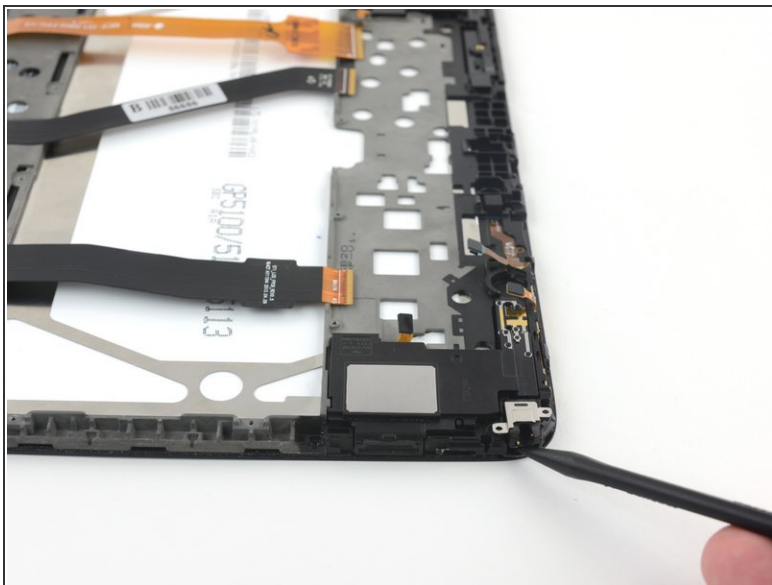
- Use a nylon spudger to flip up the eight press-fit connectors from the motherboard.
- ❗ The vibration motor is missing from these photos.

## Step 13



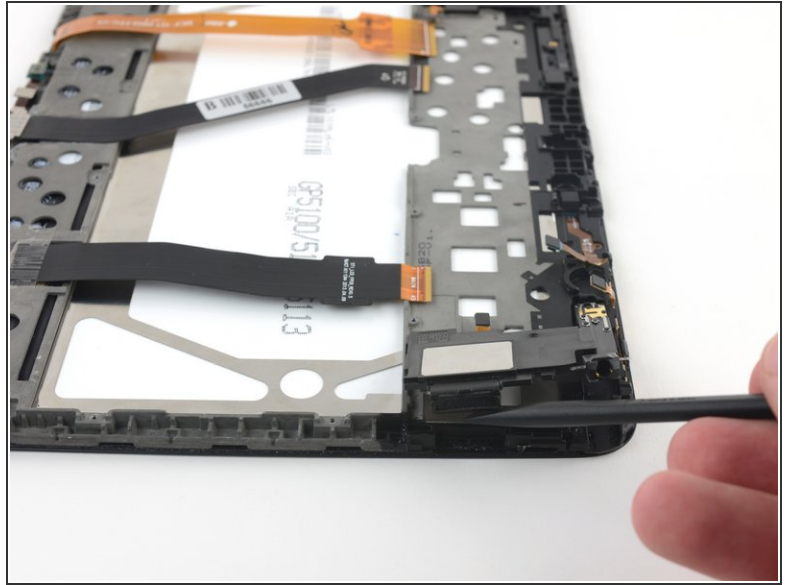
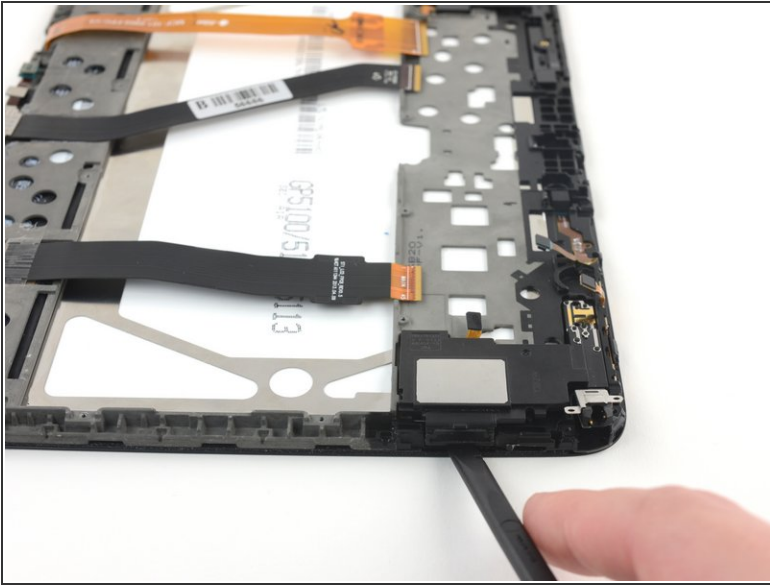
- Use nylon-tipped tweezers to remove the motherboard.

## Step 14 — Speaker & Auxiliary Port



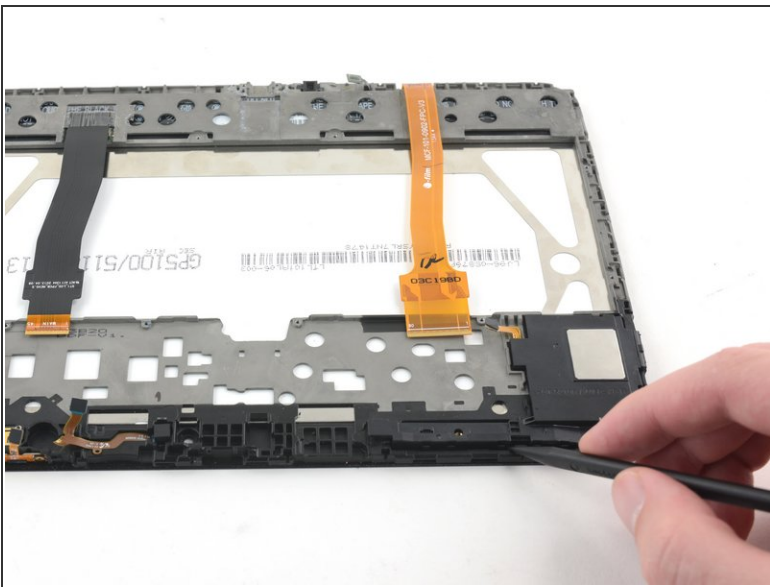
- Using the pointed end of a nylon spudger, pry upwards between the screen chassis and the auxiliary port.
- ⓘ The speaker is permanently connected to the auxiliary port and will need to be removed from the device as a single unit.

## Step 15



- Use the flat end of a spudger to pry upwards between the speaker and the display chassis.
- Remove the speaker and auxiliary port assembly.

## Step 16



- Use the pointed end of a spudger to pry upwards between the other speaker unit and the display chassis.

To reassemble your device, follow these instructions in reverse order.