



Samsung Galaxy Tab 3 8.0 Motherboard Replacement

When all else fails, it's often the motherboard's fault. This guide will show you how to replace it.

Written By: Kyle Ballard



INTRODUCTION

This guide will take you through the step-by-step process of removing and replacing the motherboard of a Samsung Galaxy Tab 3 8.0.



TOOLS:

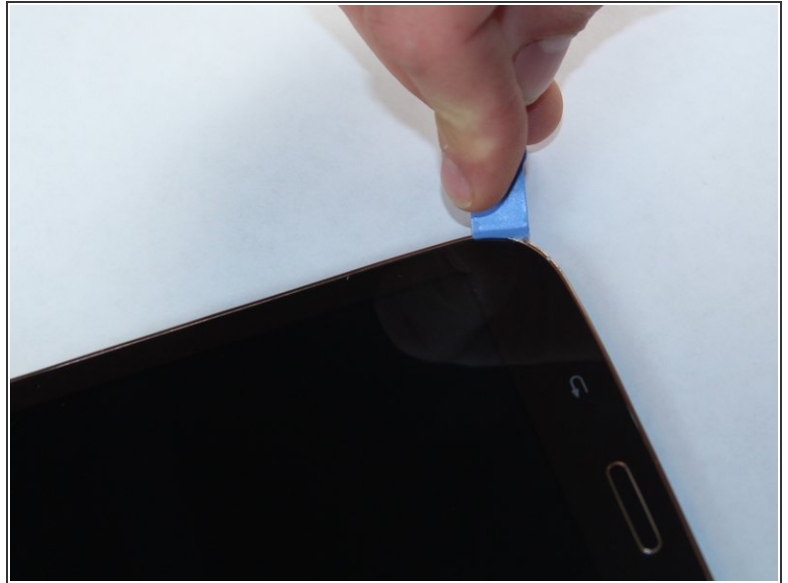
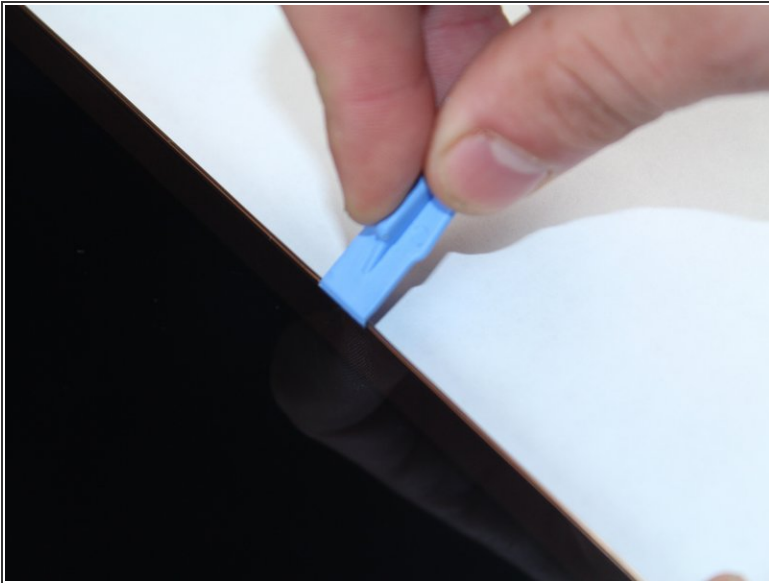
- [iFixit Opening Tools](#) (1)
- [Tweezers](#) (1)
- [Phillips #000 Screwdriver](#) (1)



PARTS:

- [Samsung Galaxy Tab 3 8.0 Motherboard](#) (1)

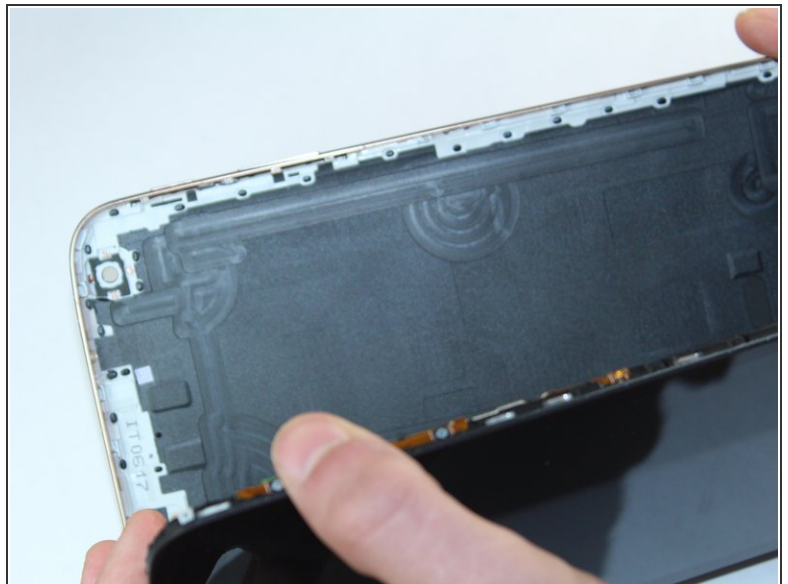
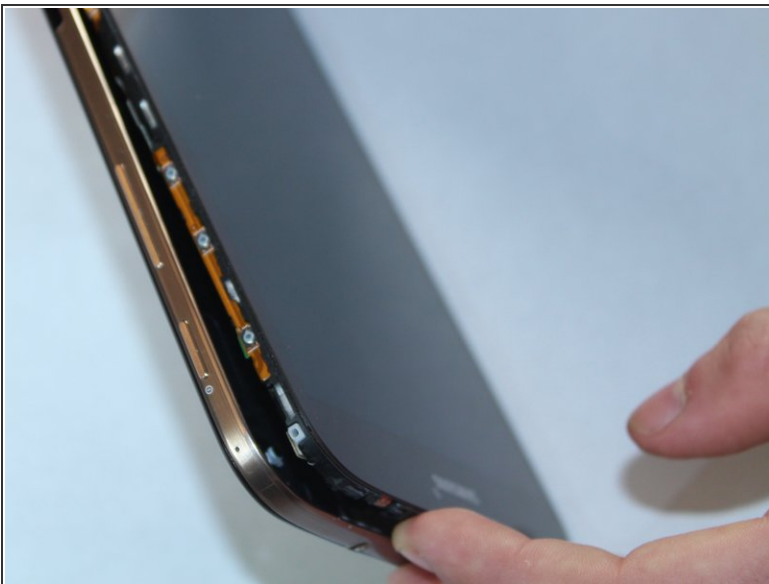
Step 1 — Battery - Open up the tablet



- Start out by separating the screen from the back cover using the larger plastic opening tool to pry them apart.

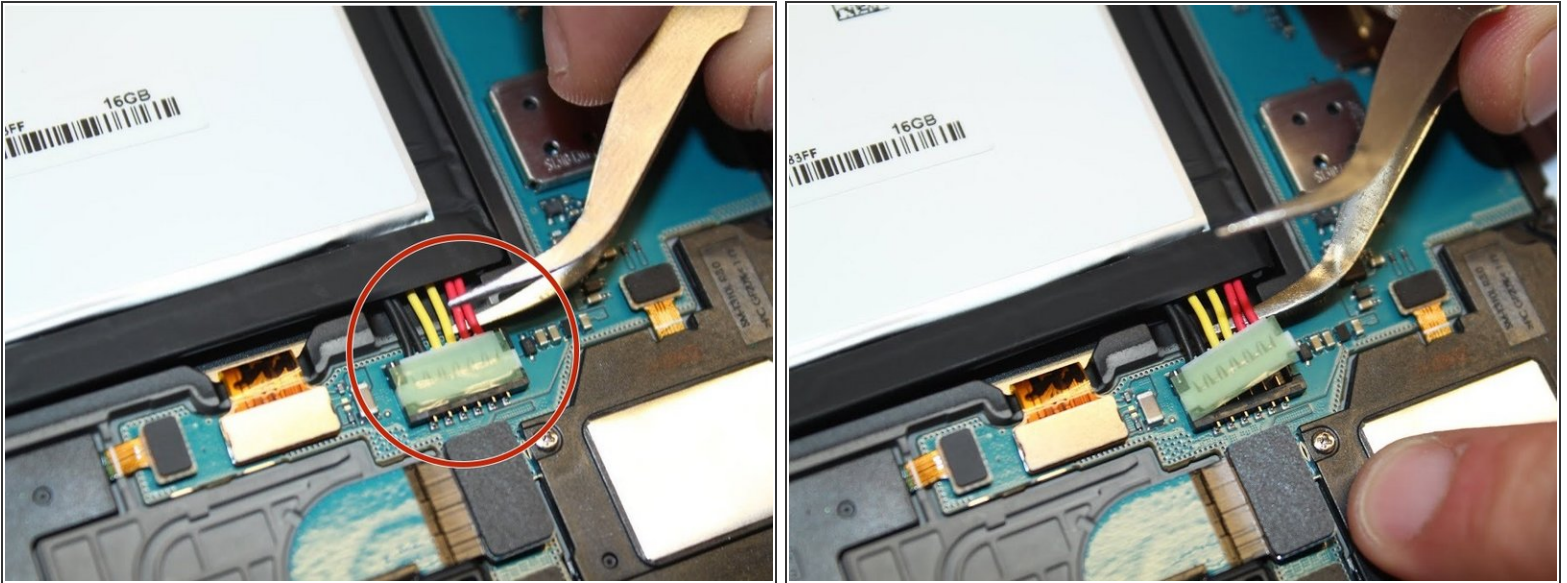
⚠ Be careful when removing the screen as negligence can cause damage.

Step 2 — Remove Back Cover




- Once every part of the screen is separated from the back cover, you should be able to fully remove it with your hands.

Step 3 — Disconnect Battery



- To remove the battery you must use something small, such as tweezers, to disconnect the battery from its port.

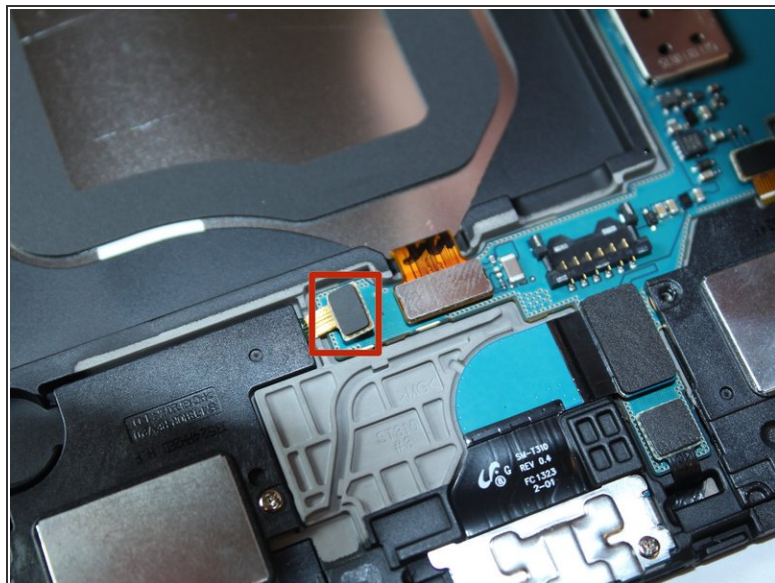
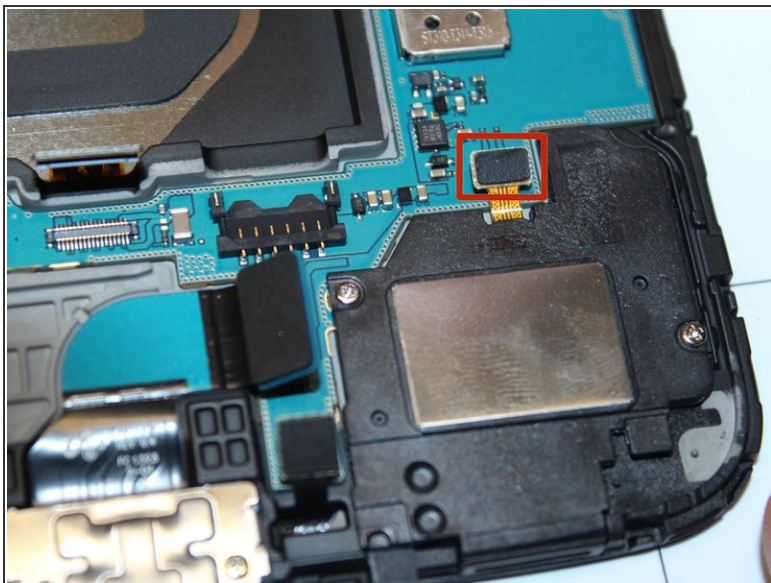
 Note: the connection lifts up to remove.

Step 4 — Remove Battery



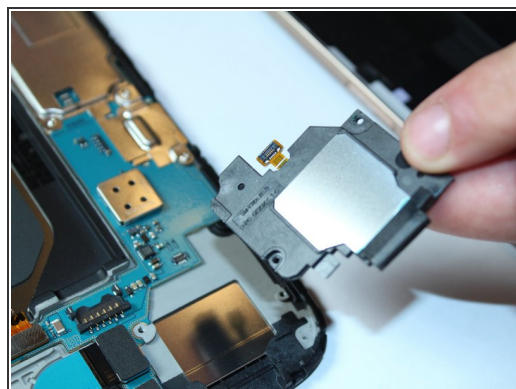
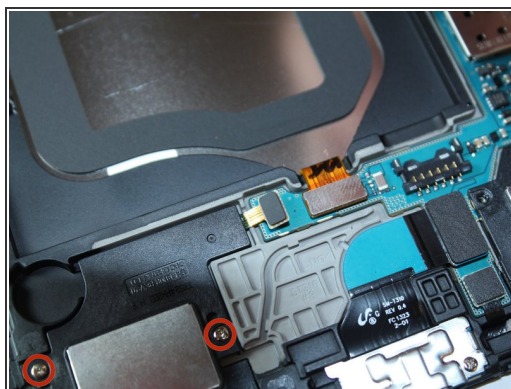
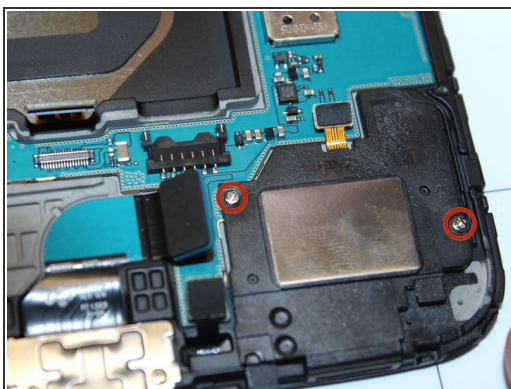
- After the battery is disconnected, use the pulling tab to safely remove the battery.

Step 5 — Disconnect Speakers



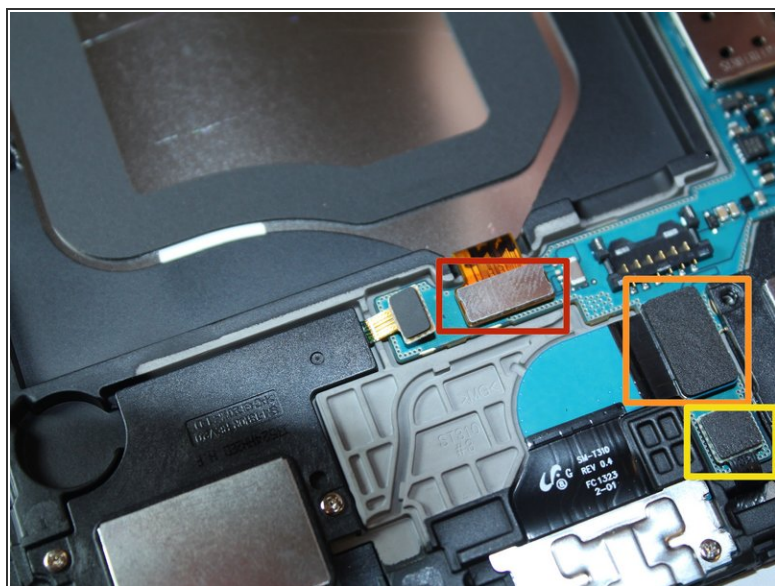
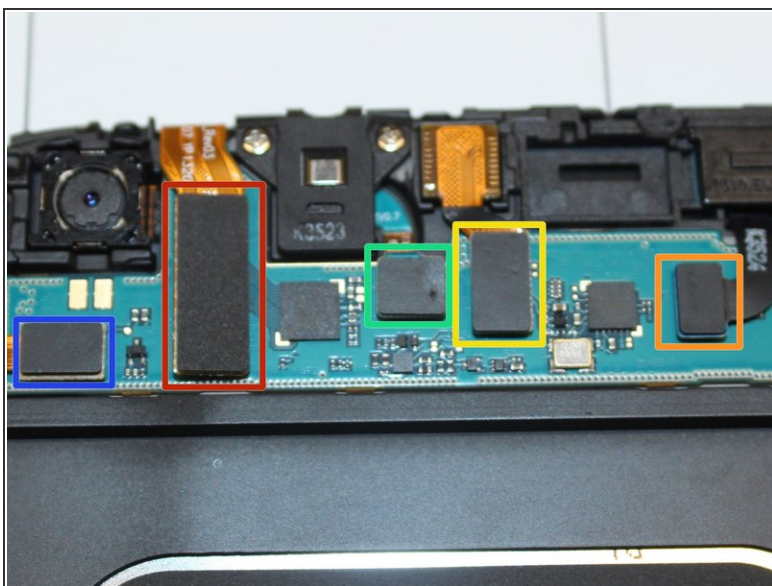
- Disconnect the relays attached to the motherboard.

Step 6 — Unscrew Speakers



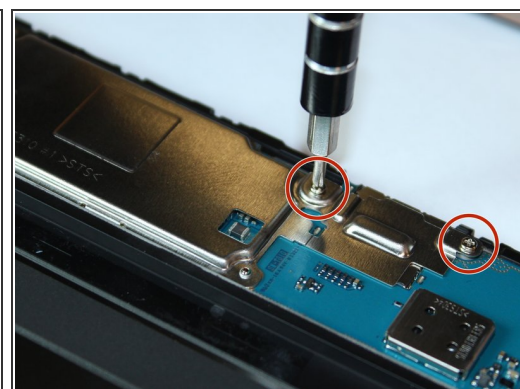
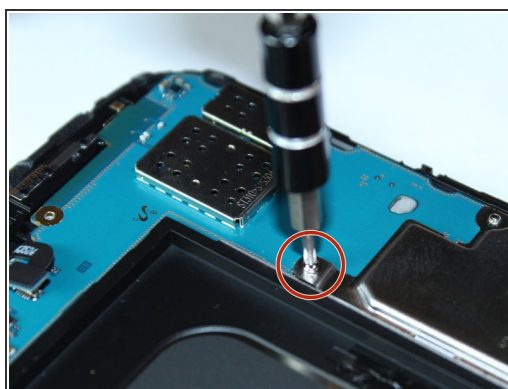
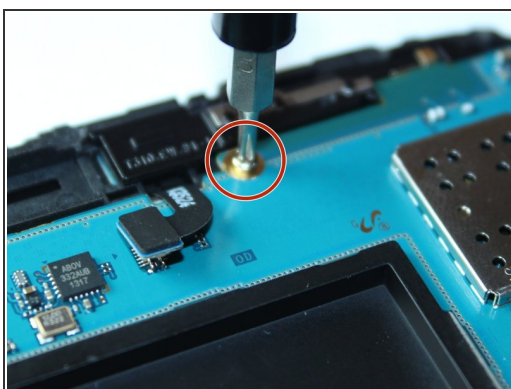
- Unscrew the 2.9mm screws from the speakers using a Phillips head #000 screwdriver, then lift the speakers from the device.

Step 7 — Disconnect All Relays



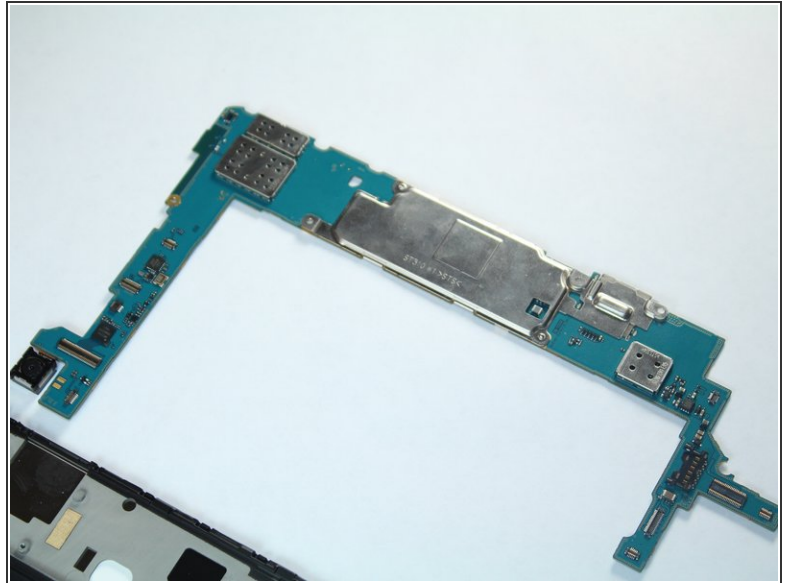
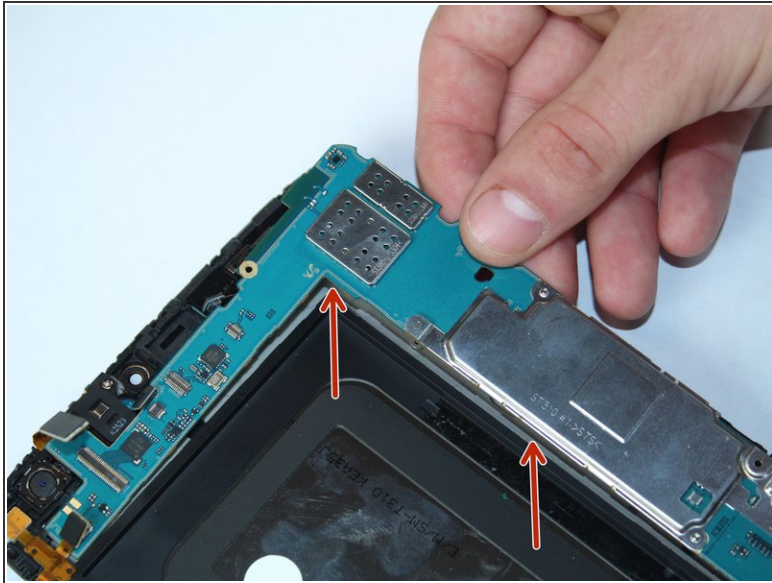
- Using a plastic remover tool, carefully unseat each of the electric leads plugged into the board.

Step 8 — Unscrew Motherboard



- Unscrew the 2.9mm Phillips #000 screw above the battery, and the three 2.9mm Phillips #000 screws to the right of the battery.

Step 9 — Remove the Motherboard



- Carefully lift the board from the device.

To reassemble your device, follow these instructions in reverse order.