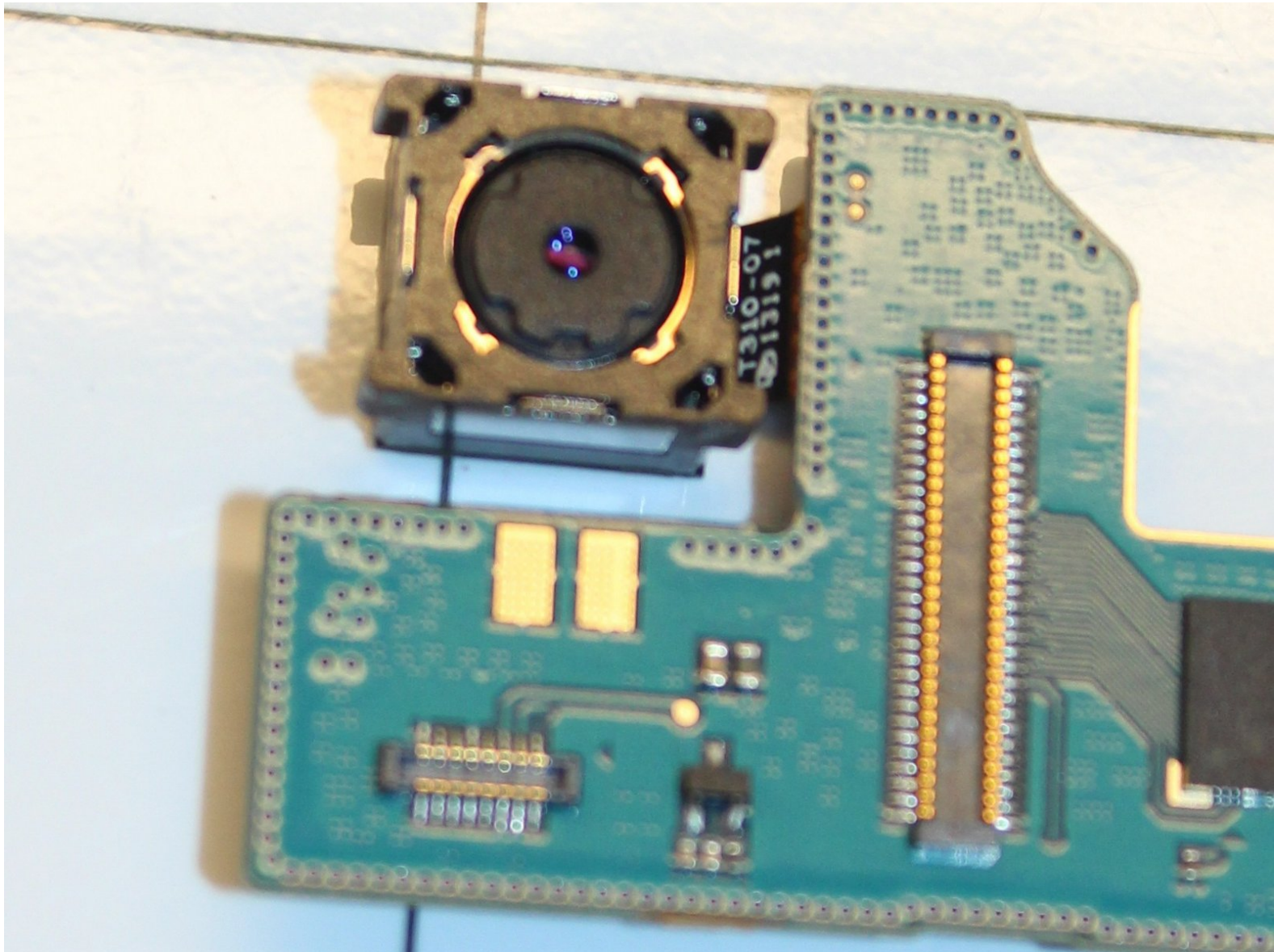




Samsung Galaxy Tab 3 8.0 Rear Camera Replacement

If you're camera isn't functioning properly, follow this guide to replace it.

Written By: anthony gonzalez





TOOLS:

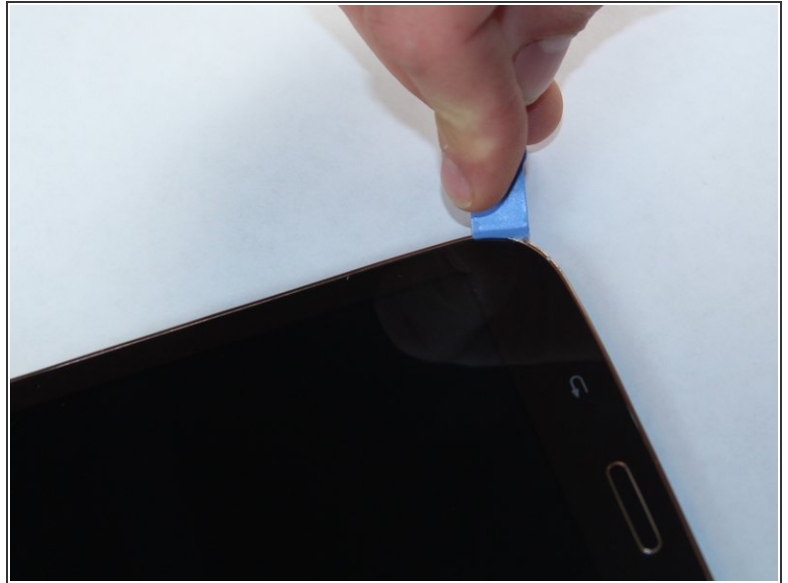
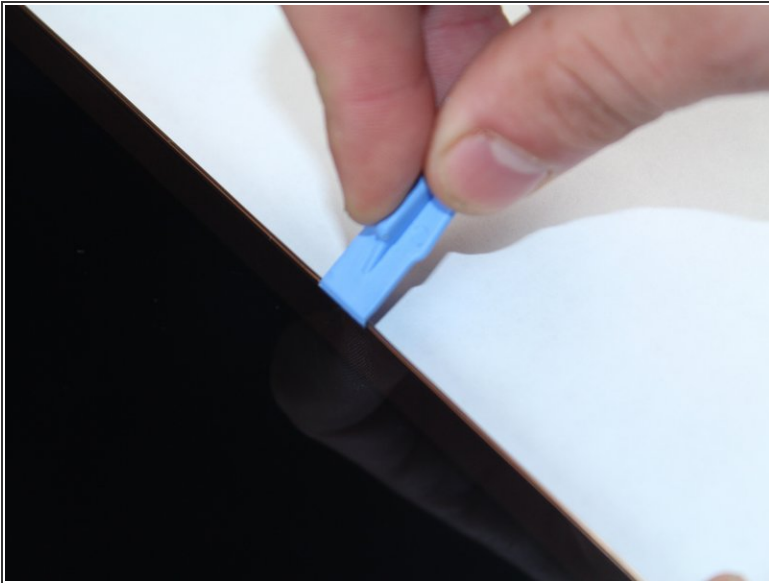
- [iFixit Opening Tools](#) (1)
- [Tweezers](#) (1)
- [Phillips #000 Screwdriver](#) (1)



PARTS:

- [Galaxy Tab 3 8.0 Rear Camera](#) (1)

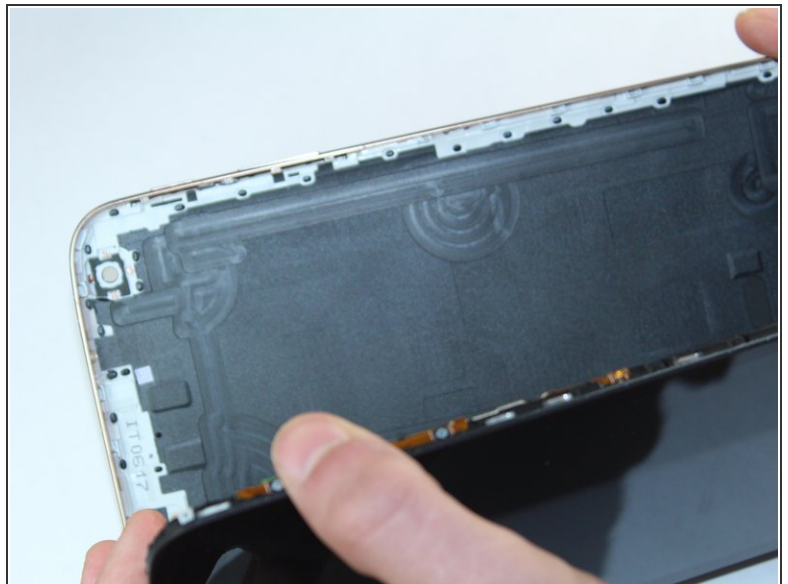
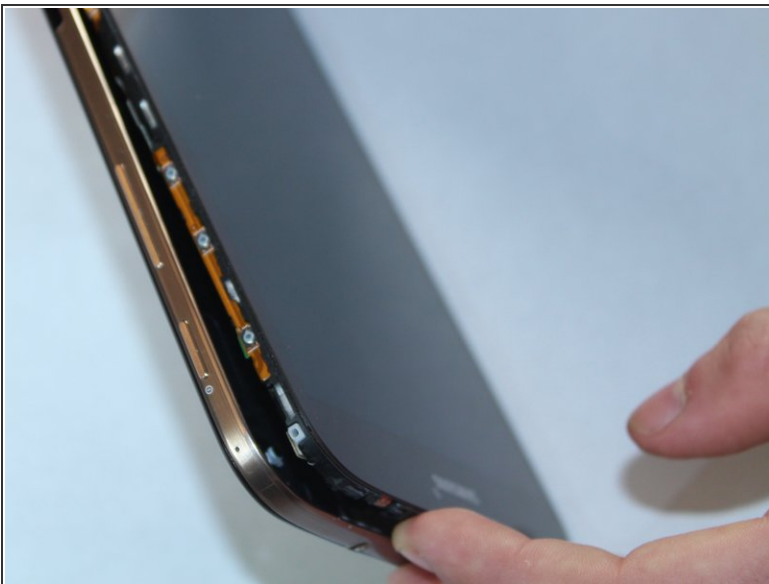
Step 1 — Battery - Open up the tablet



- Start out by separating the screen from the back cover using the larger plastic opening tool to pry them apart.

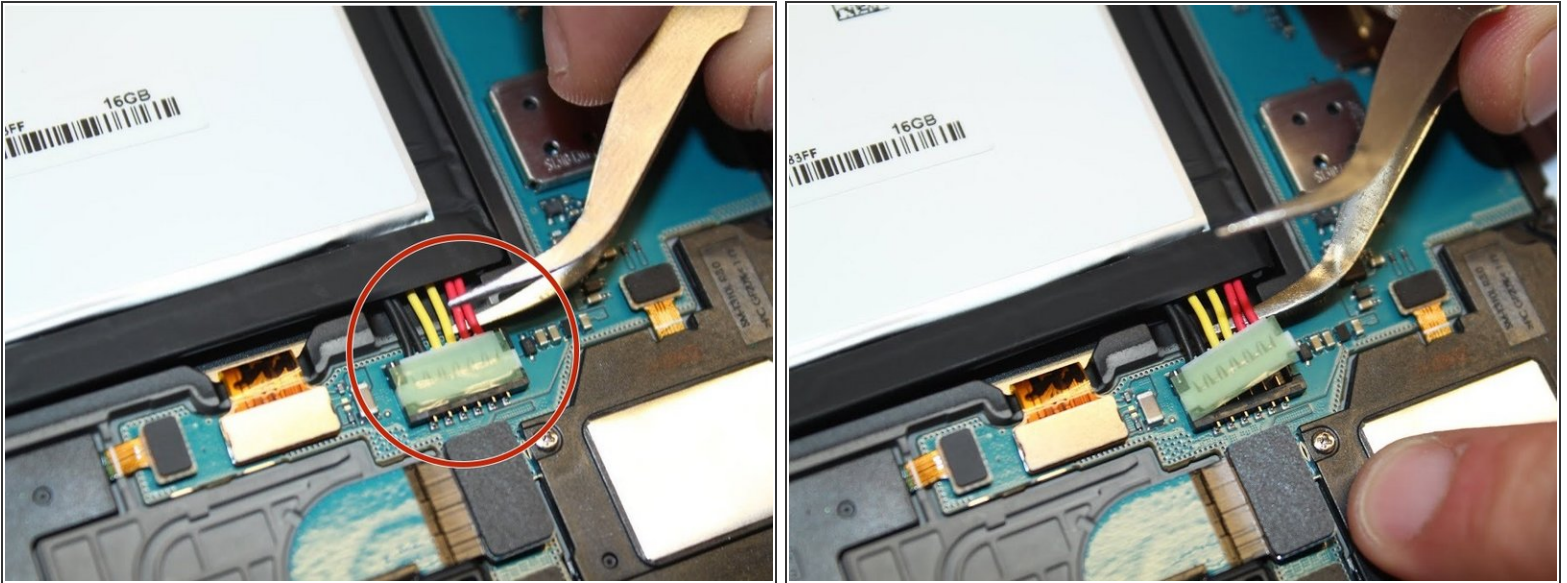
⚠ Be careful when removing the screen as negligence can cause damage.

Step 2 — Remove Back Cover




- Once every part of the screen is separated from the back cover, you should be able to fully remove it with your hands.

Step 3 — Disconnect Battery



- To remove the battery you must use something small, such as tweezers, to disconnect the battery from its port.

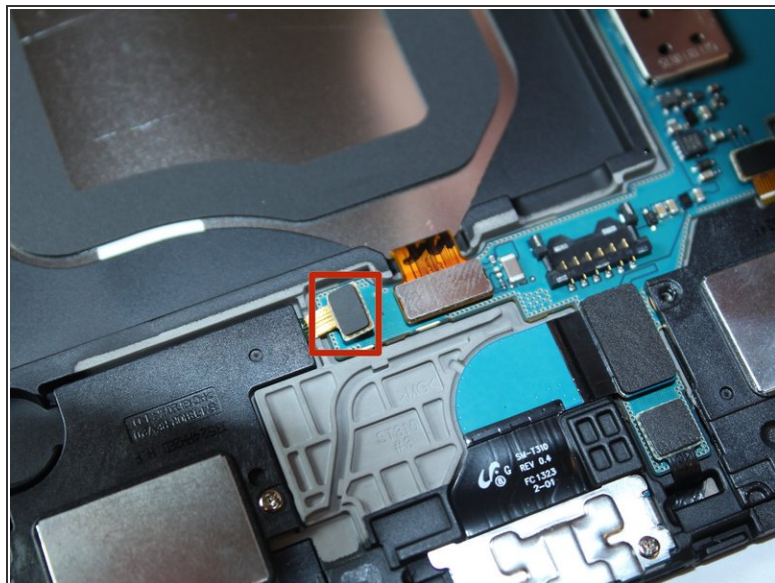
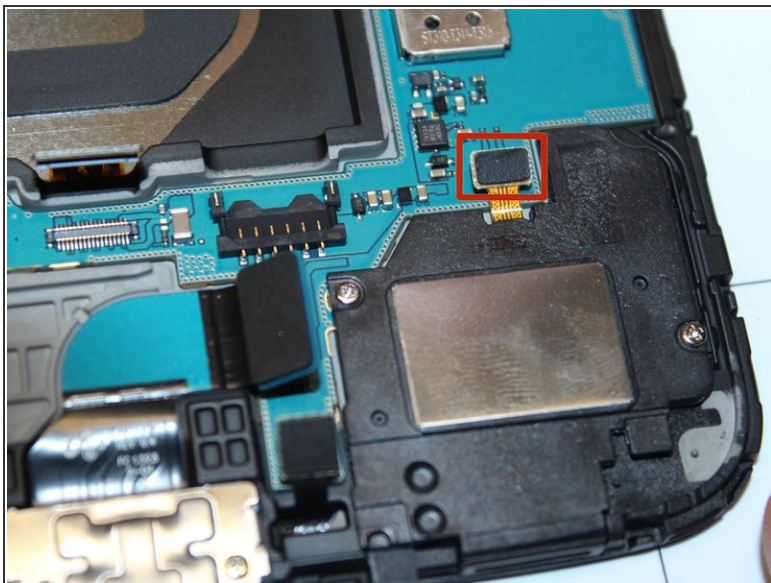
 Note: the connection lifts up to remove.

Step 4 — Remove Battery



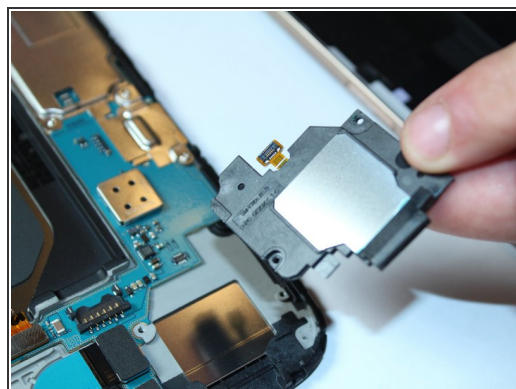
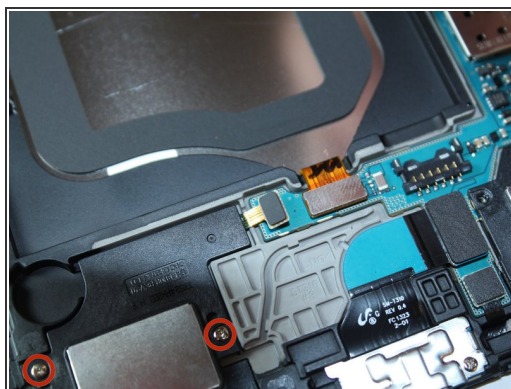
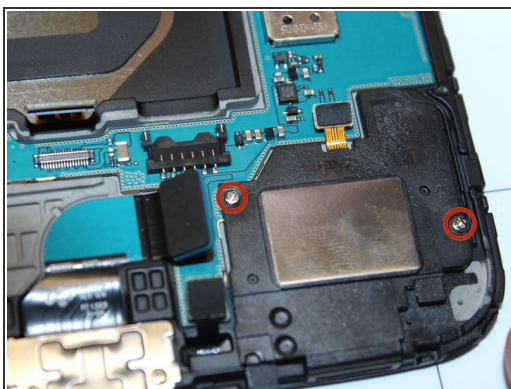
- After the battery is disconnected, use the pulling tab to safely remove the battery.

Step 5 — Disconnect Speakers



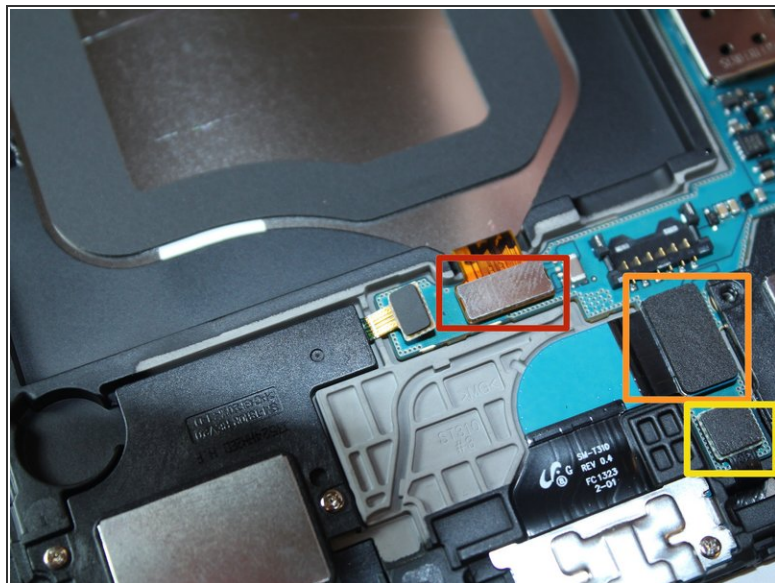
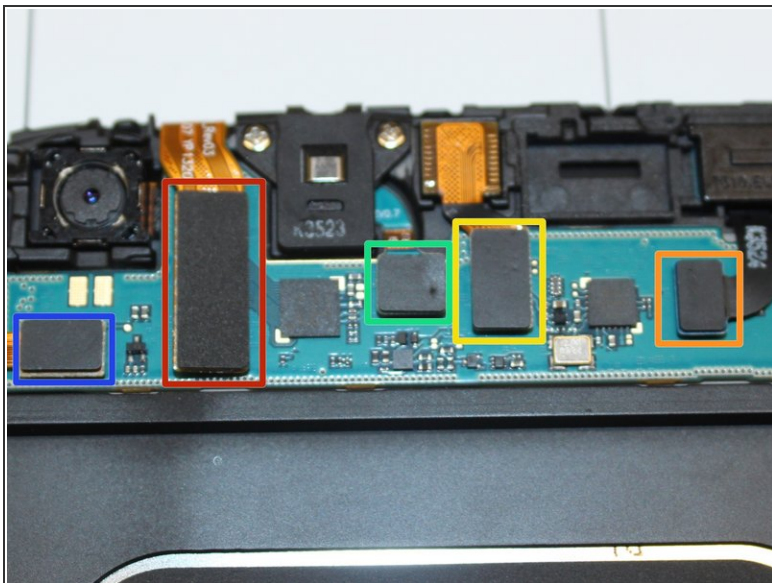
- Disconnect the relays attached to the motherboard.

Step 6 — Unscrew Speakers



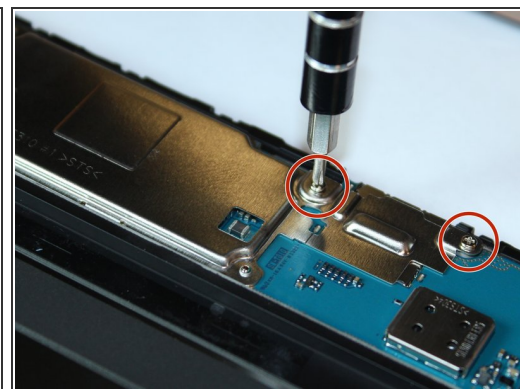
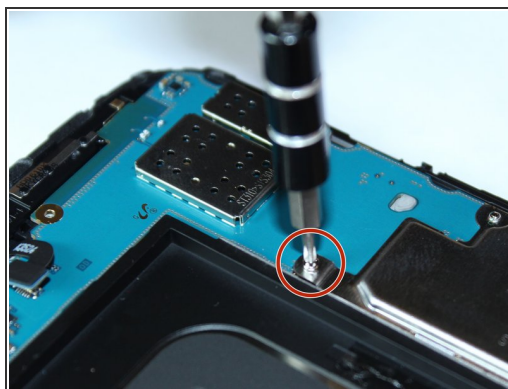
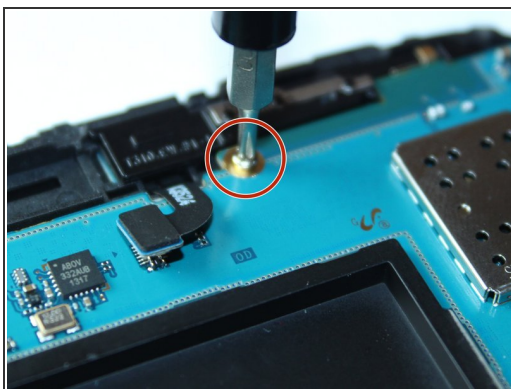
- Unscrew the 2.9mm screws from the speakers using a Phillips head #000 screwdriver, then lift the speakers from the device.

Step 7 — Disconnect All Relays



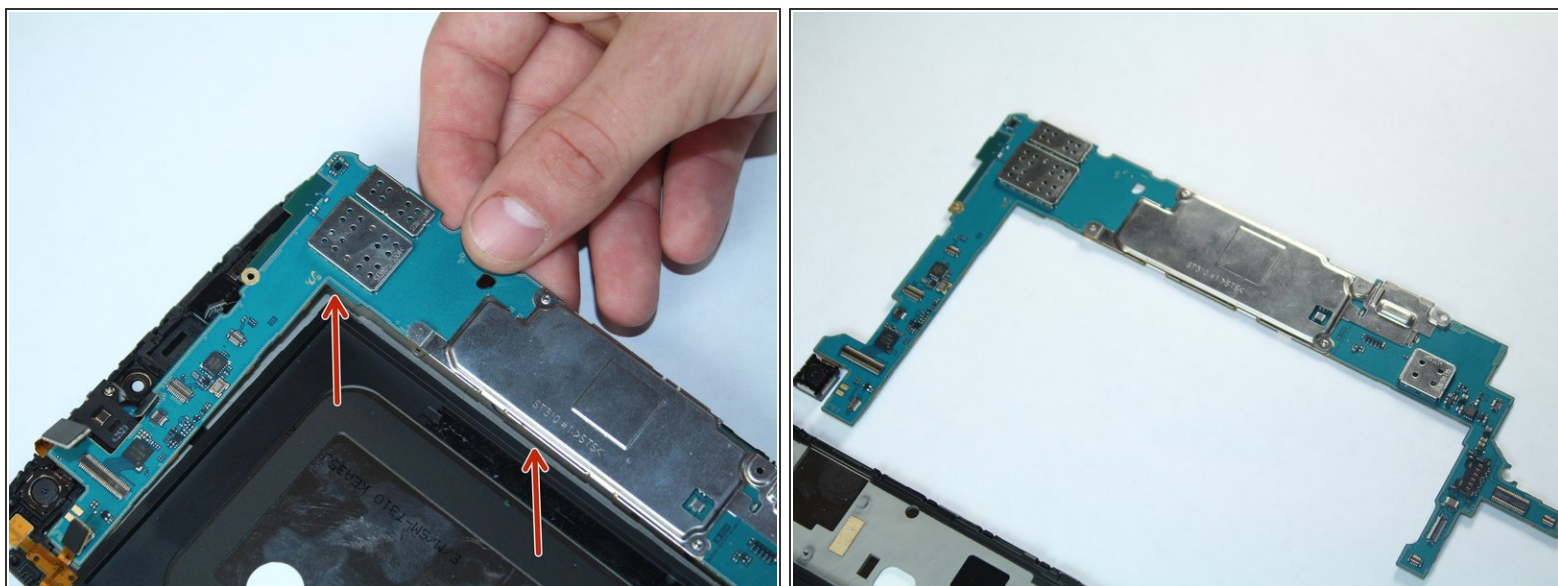
- Using a plastic remover tool, carefully unseat each of the electric leads plugged into the board.

Step 8 — Unscrew Motherboard



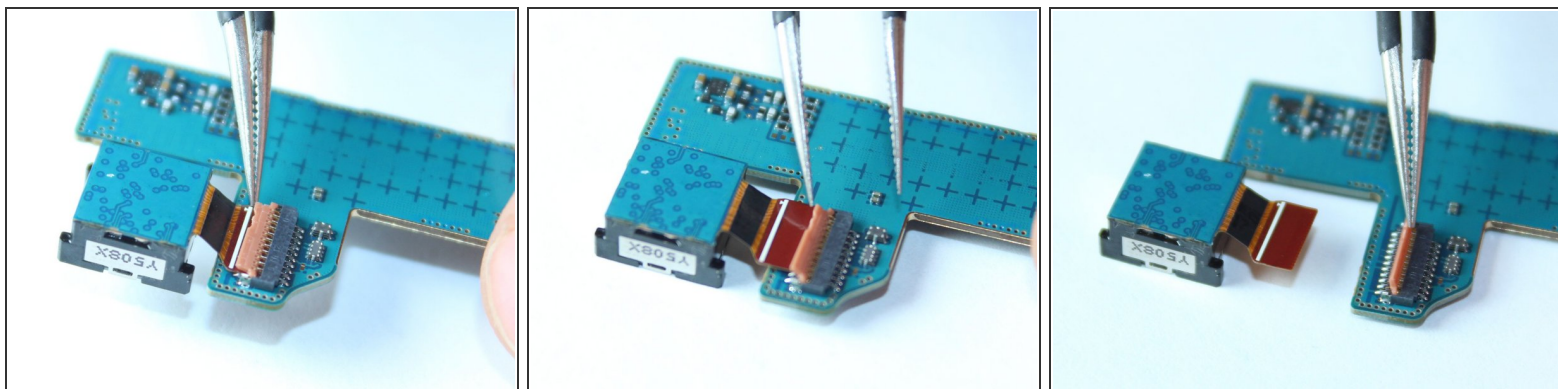
- Unscrew the 2.9mm Phillips #000 screw above the battery, and the three 2.9mm Phillips #000 screws to the right of the battery.

Step 9 — Remove the Motherboard



- Carefully lift the board from the device.

Step 10 — Disconnect the Rear Camera



- Flip the motherboard to reveal the rear camera connection and with tweezers gently lift the connector pins and remove the camera.

To reassemble your device, follow these instructions in reverse order.