



Samsung Galaxy Tab 4 10.1 LCD Display Replacement

Follow this free guide to learn how to replace the LCD display on a Samsung Galaxy Tab 4 10.1 android tablet.

Written By: Blake Klein



INTRODUCTION

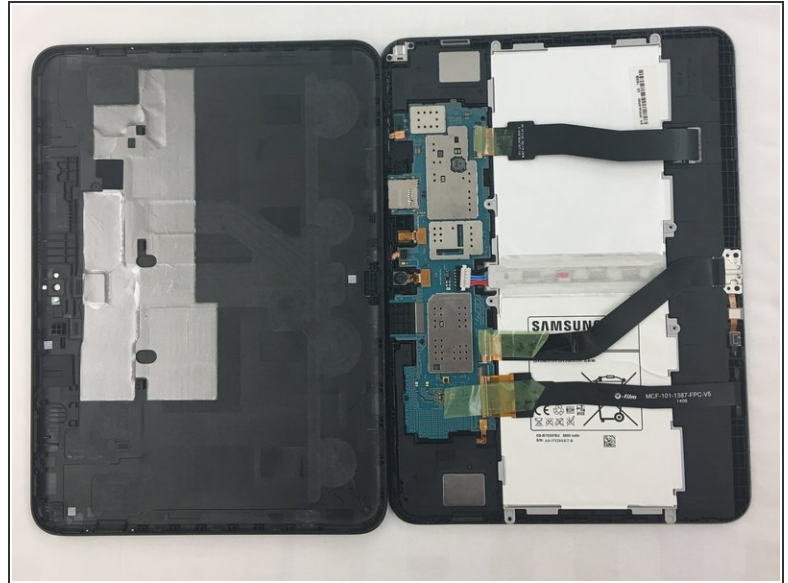
Replacement guide for the LCD display on a Samsung Galaxy Tab 4 10.1 android tablet.



TOOLS:

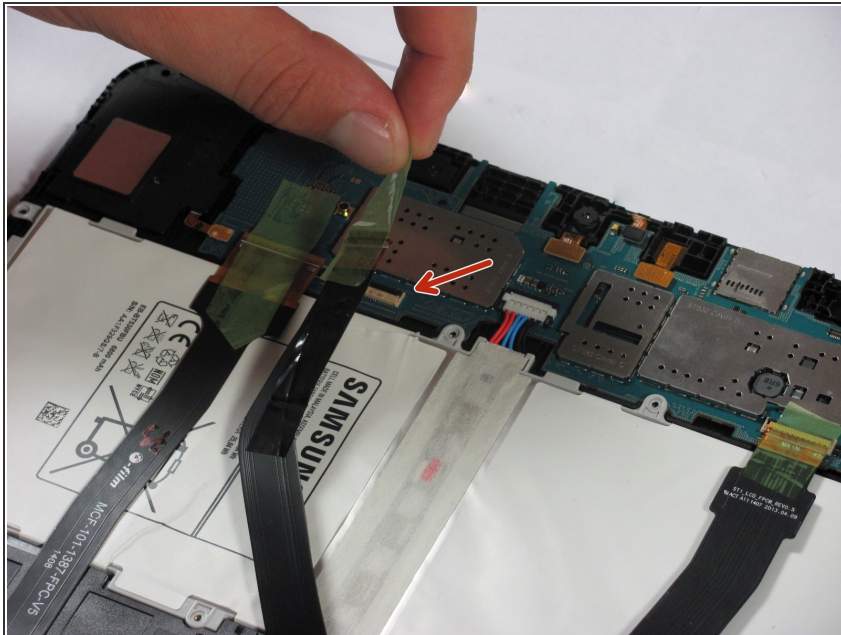
- [iFixit Opening Picks set of 6](#) (1)
 - [iOpener](#) (1)
 - [Phillips #00 Screwdriver](#) (1)
 - [Spudger](#) (1)
 - [Tweezers](#) (1)
-

Step 1 — Battery



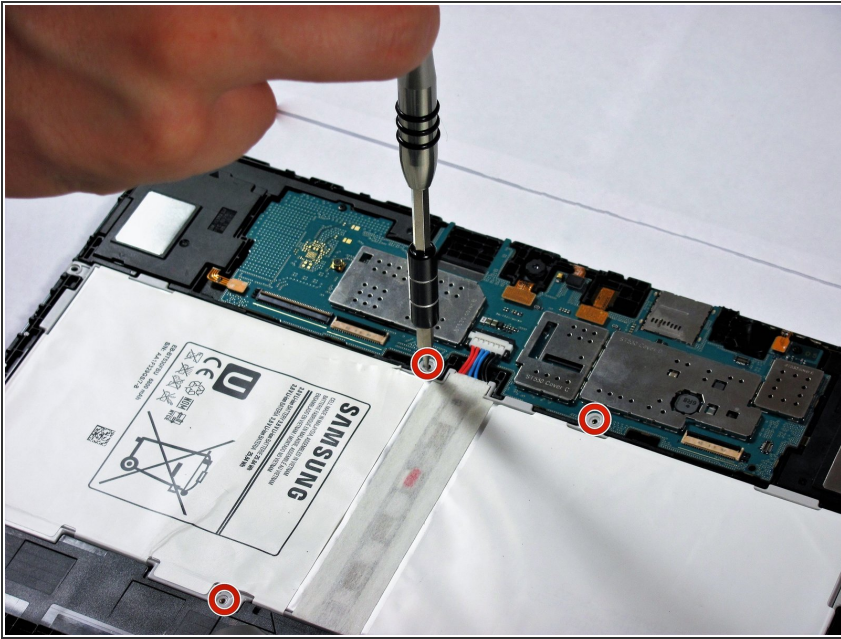
- Insert the wedge of the nylon spudger and slide it between the front and back panels until the back comes off.

Step 2



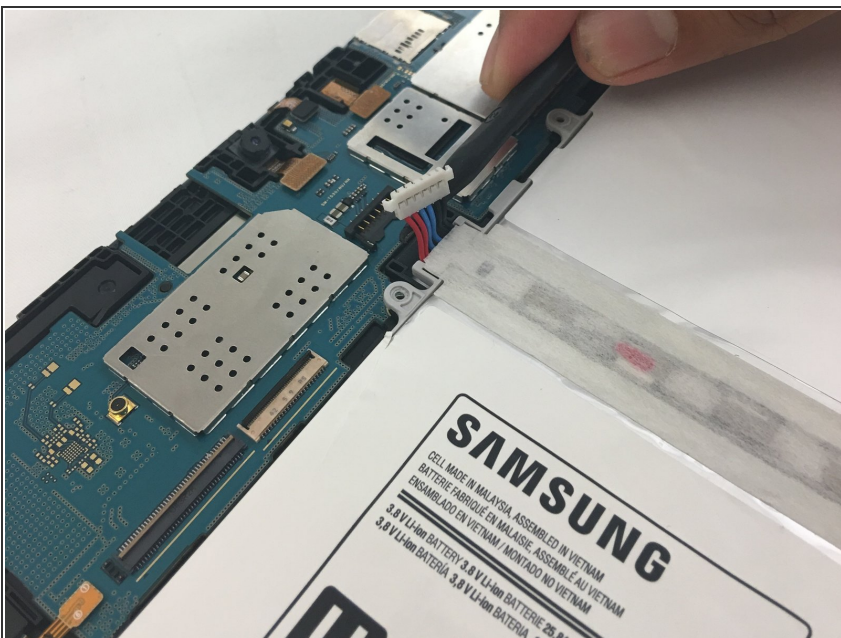
- Peel off the green tape that covers the connectors for the three black strips.
- Use the tip of a spudger or your fingernail to flip up the small retaining flaps.

Step 3



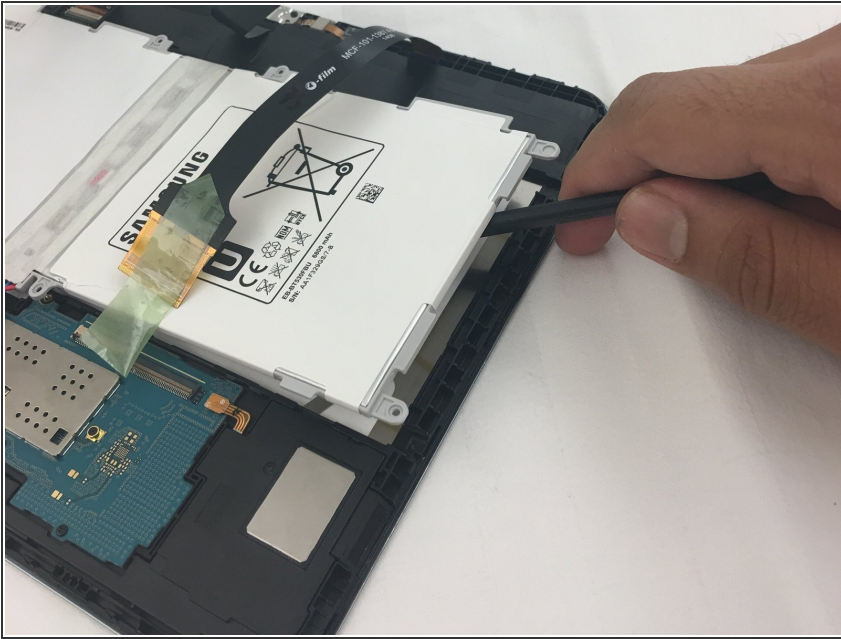
- Use a Phillips #00 screwdriver to remove the four 3.2mm screws.

Step 4



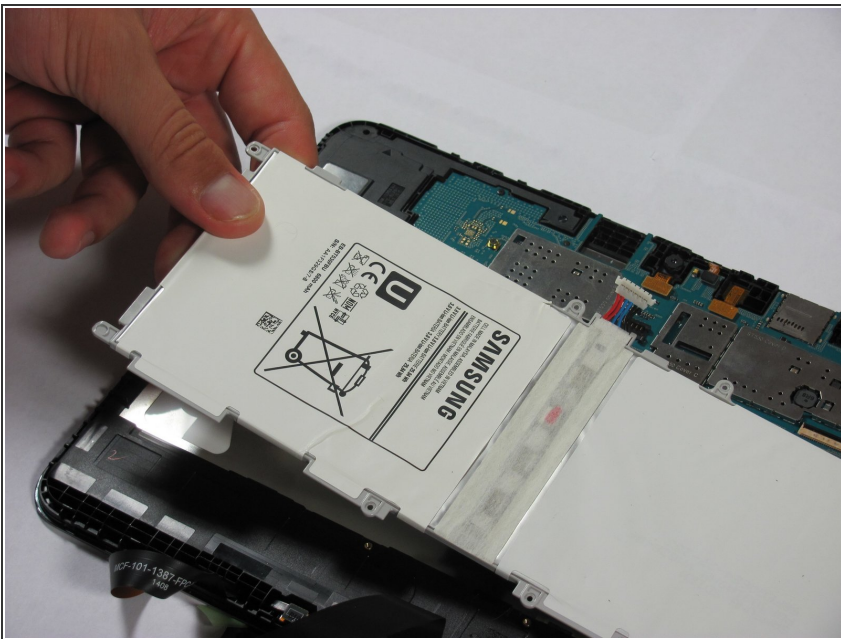
- Detach the red, blue, and black cables by prying up on the white connector from the motherboard.
- If using fingers instead, pull evenly on the full width of the cable so the wires are not overly strained.
- ⚠ If you pull too hard you can damage the connector on the circuit board. Use a spudger or tweezers to push down on the black connector on the board while gently prying the battery connector loose. The connector breaks VERY easily.

Step 5



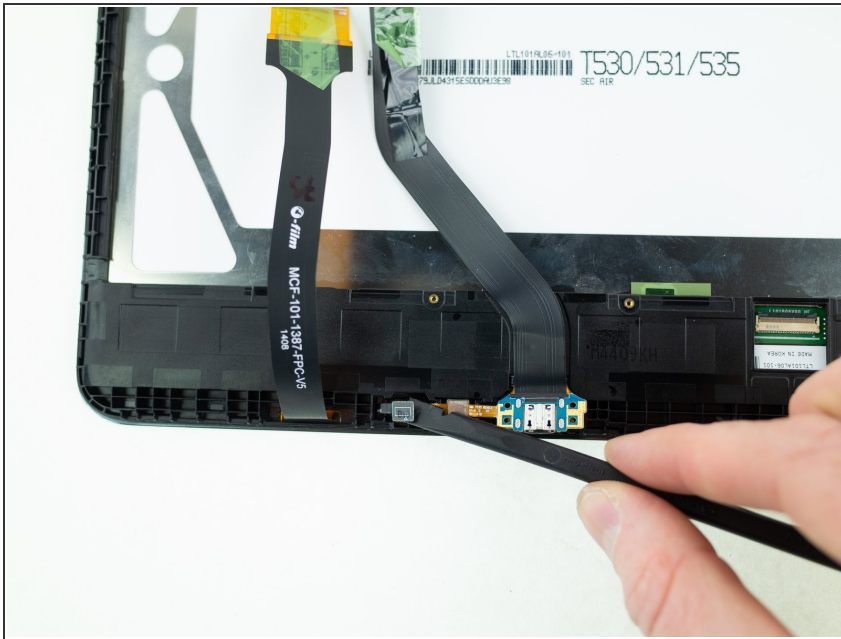
- Use the nylon spudger to remove the battery by prying up on the edges.

Step 6



- Once the battery is loose, lift it out of the device.

Step 7 — Digitizer



- Use the flat end of a spudger to disconnect the home button.

Step 8



- Use an [iOpener](#) to weaken the adhesive around the display.

Step 9



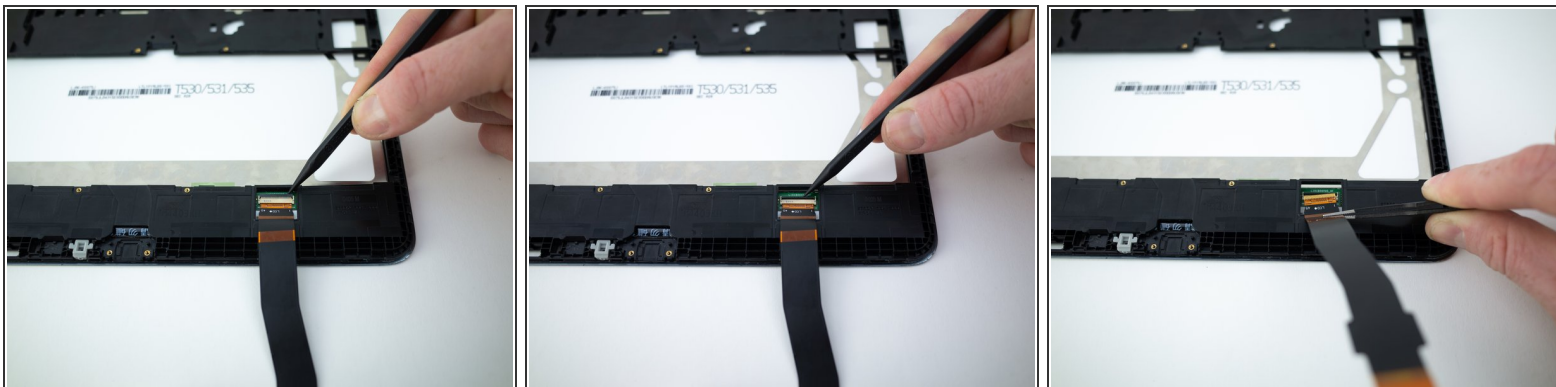
- Wedge an opening pick between the digitizer and display frame.
- Slide the opening pick around the perimeter to separate the two pieces.

Step 10



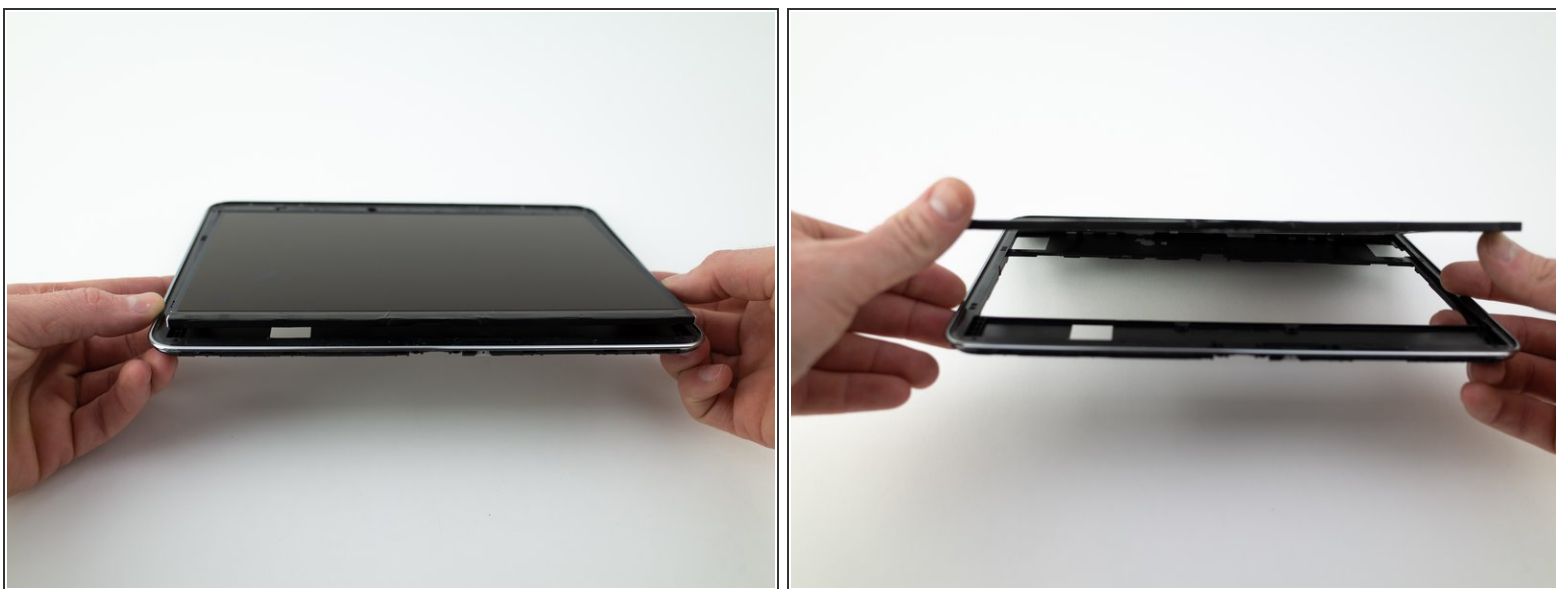
- Lift and remove the digitizer.

Step 11 — LCD Display



- Use a spudger to flip up the small locking flap on the display [ZIF](#) connector.
- Remove the display ribbon cable.

Step 12



- Hold the frame with both hands and push the LCD display up from underneath with your fingers.

Step 13



- Remove the LCD display.

To reassemble your device, follow these instructions in reverse order.