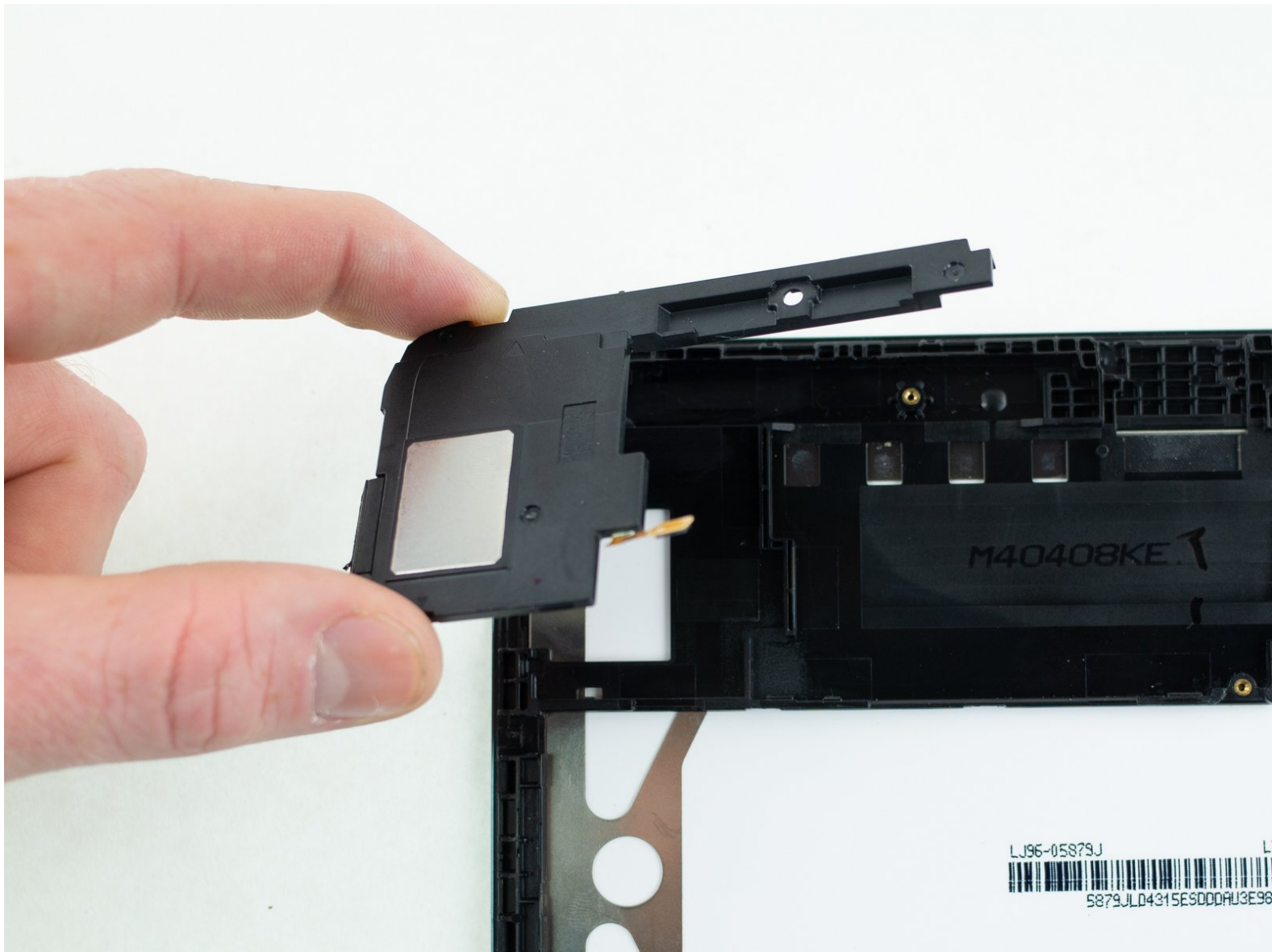




Samsung Galaxy Tab 4 10.1 Loudspeaker Replacement

Follow this free guide to learn how to replace the loudspeakers on your Samsung Galaxy Tab 4 10.1 android tablet.

Written By: Blake Klein



INTRODUCTION

Replacement guide for the loudspeakers on a Samsung Galaxy Tab 4 10.1 android tablet.



TOOLS:

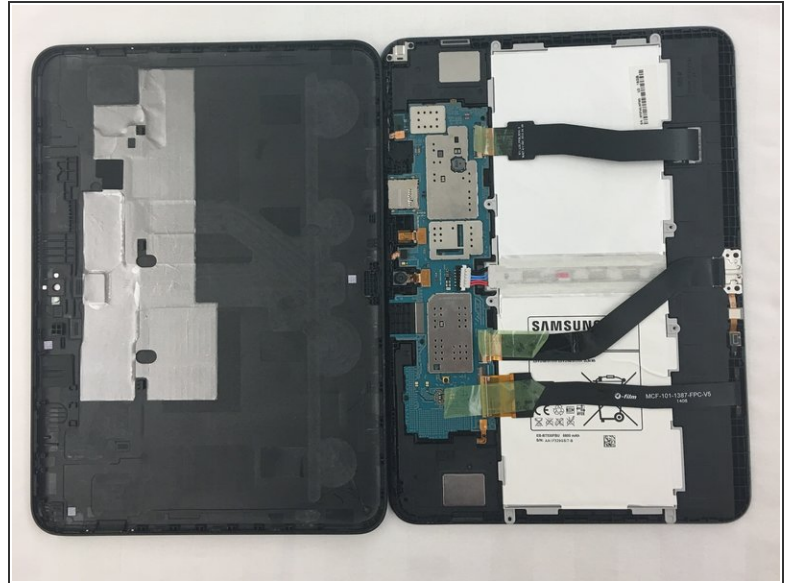
- [Phillips #00 Screwdriver](#) (1)
- [Spudger](#) (1)
- [Tweezers](#) (1)



PARTS:

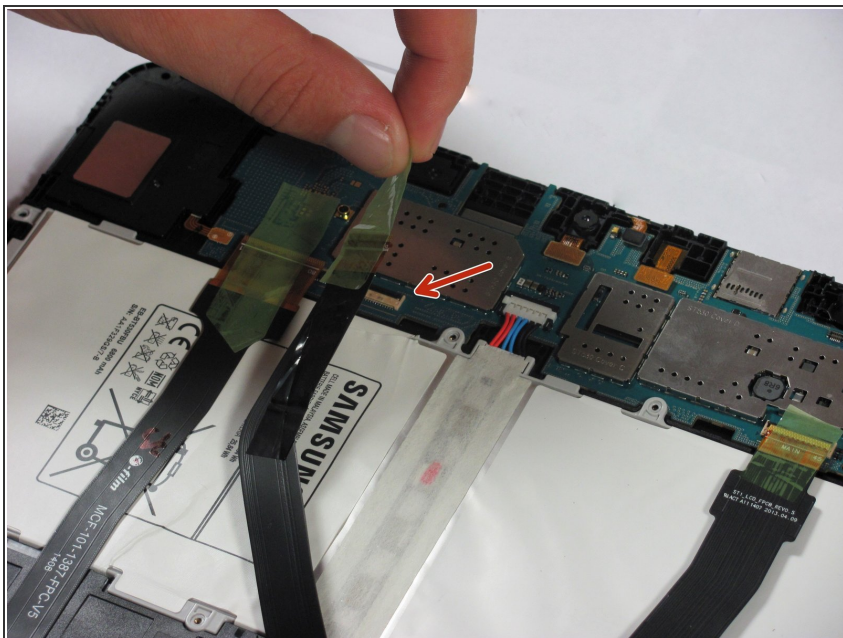
- [Galaxy Tab 4 10" Wi-Fi Headphone Jack Assembly](#) (1)

Step 1 — Battery



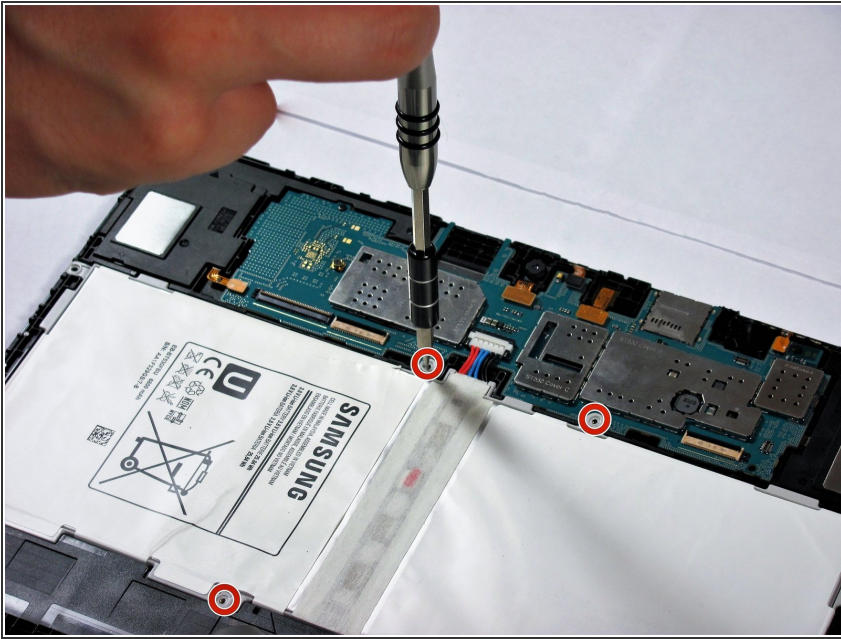
- Insert the wedge of the nylon spudger and slide it between the front and back panels until the back comes off.

Step 2



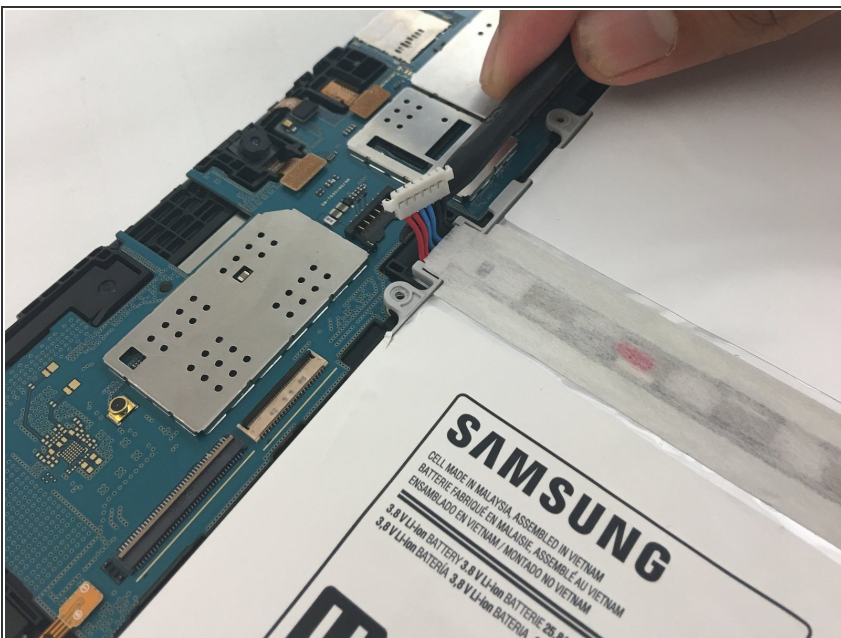
- Peel off the green tape that covers the connectors for the three black strips.
- Use the tip of a spudger or your fingernail to flip up the small retaining flaps.

Step 3



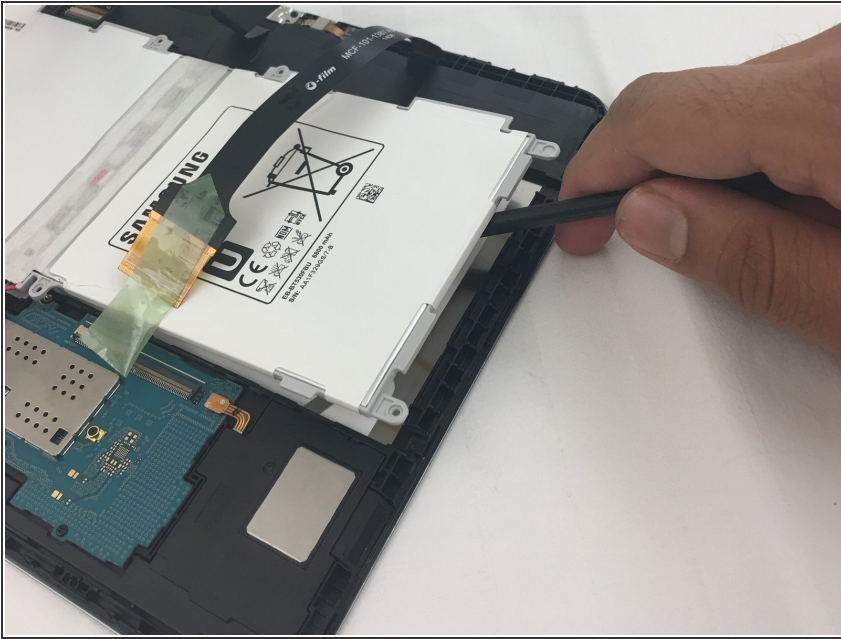
- Use a Phillips #00 screwdriver to remove the four 3.2mm screws.

Step 4



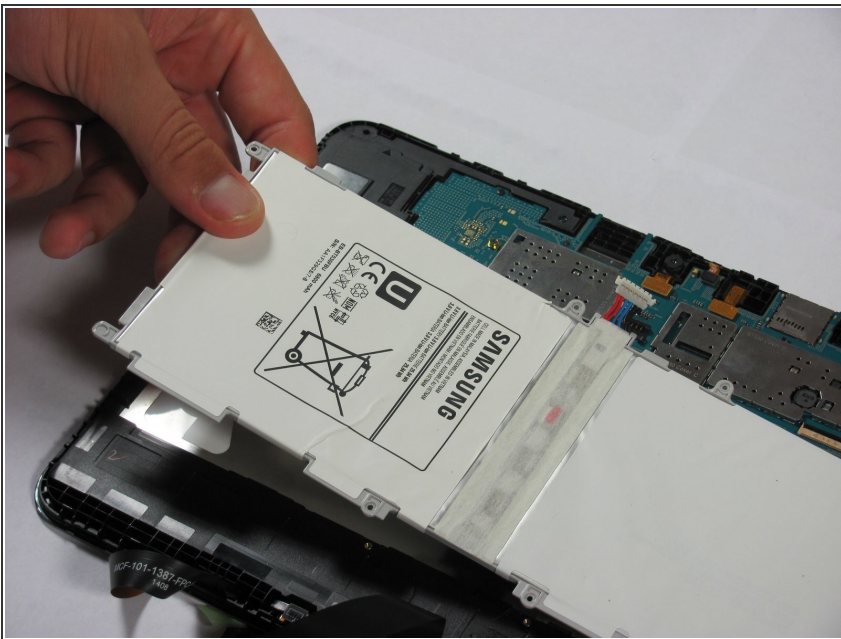
- Detach the red, blue, and black cables by prying up on the white connector from the motherboard.
- If using fingers instead, pull evenly on the full width of the cable so the wires are not overly strained.
- ⚠ If you pull too hard you can damage the connector on the circuit board. Use a spudger or tweezers to push down on the black connector on the board while gently prying the battery connector loose. The connector breaks VERY easily.

Step 5



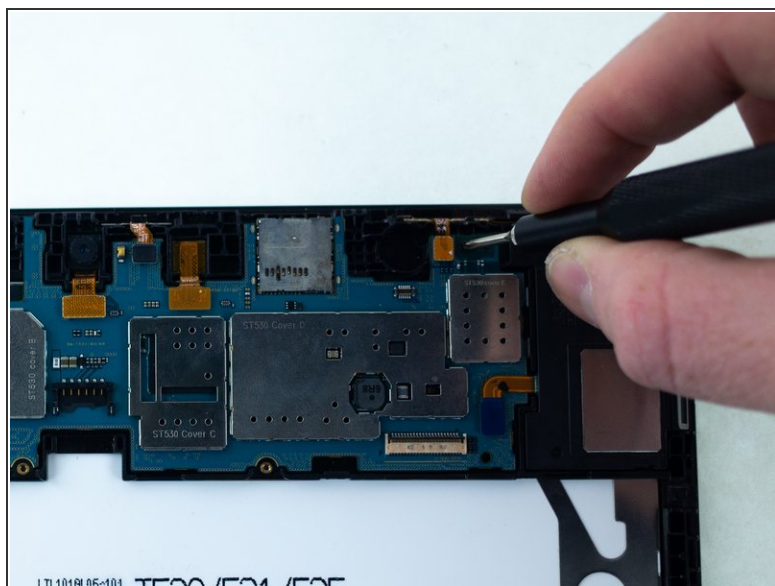
- Use the nylon spudger to remove the battery by prying up on the edges.

Step 6



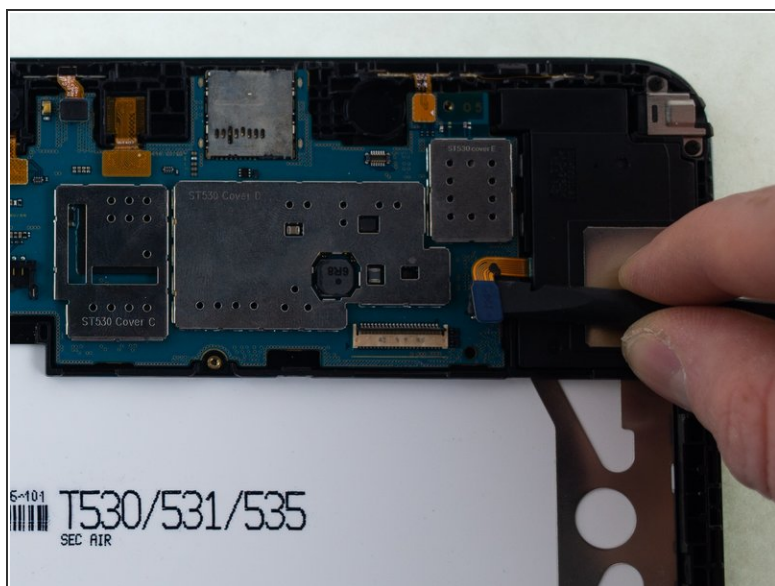
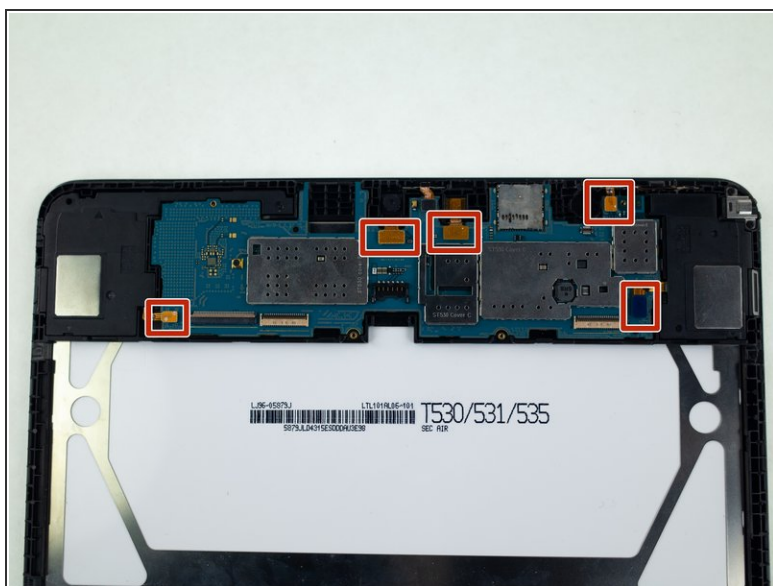
- Once the battery is loose, lift it out of the device.

Step 7 — Motherboard



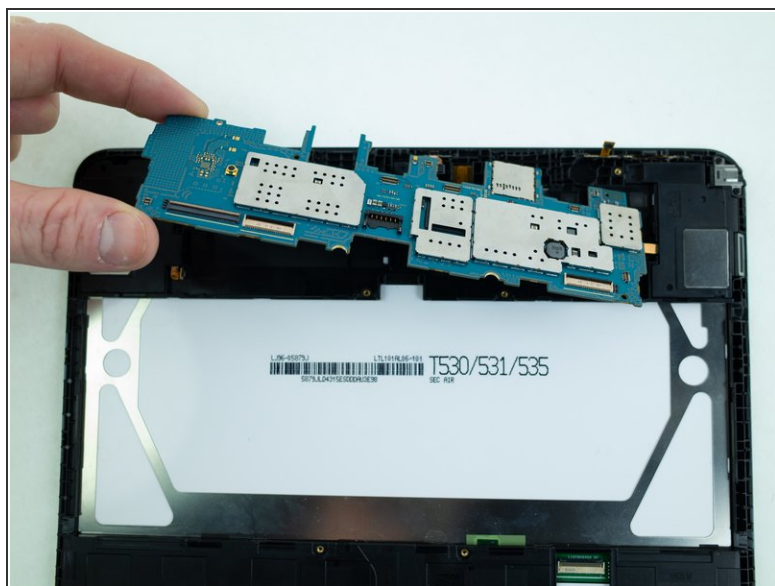
- Remove the two 2.7mm Phillips #00 screws from the motherboard.

Step 8



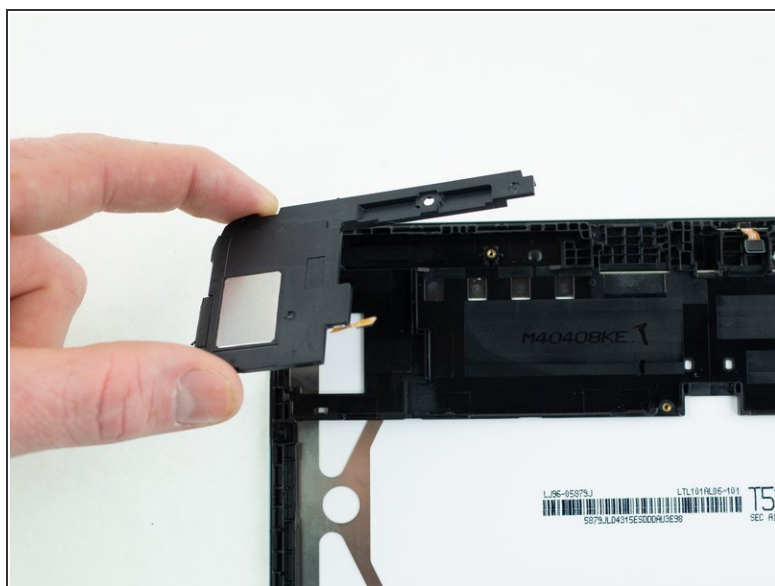
- Use the flat end of a spudger to pry up and disconnect the five press-fit connectors from the motherboard.

Step 9



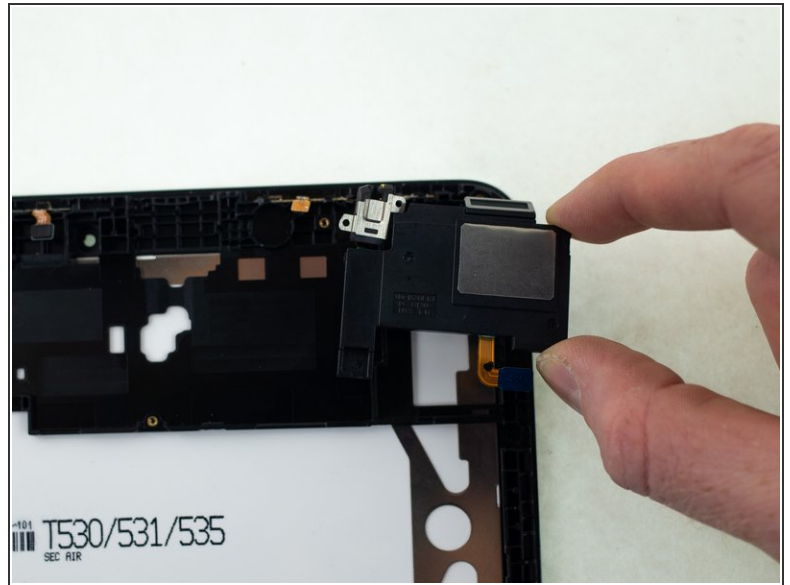
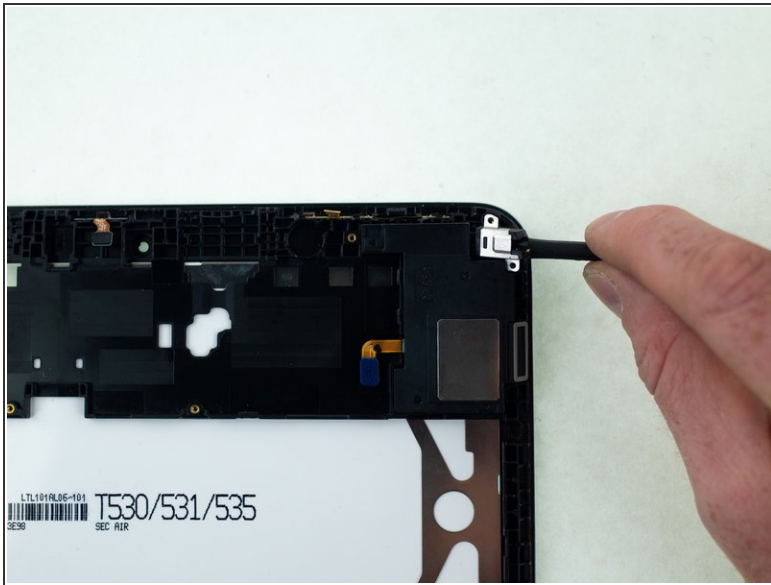
- Use a spudger to pry up the motherboard, and remove it from the device.

Step 10 — Loudspeaker



- Insert the pointed end of a spudger underneath the ribbon connector of the left loudspeaker.
- Pry upwards to remove the loudspeaker.

Step 11



- Insert the pointed end of a spudger underneath the headphone jack .
- Pry upwards to remove the loudspeaker.

To reassemble your device, follow these instructions in reverse order.