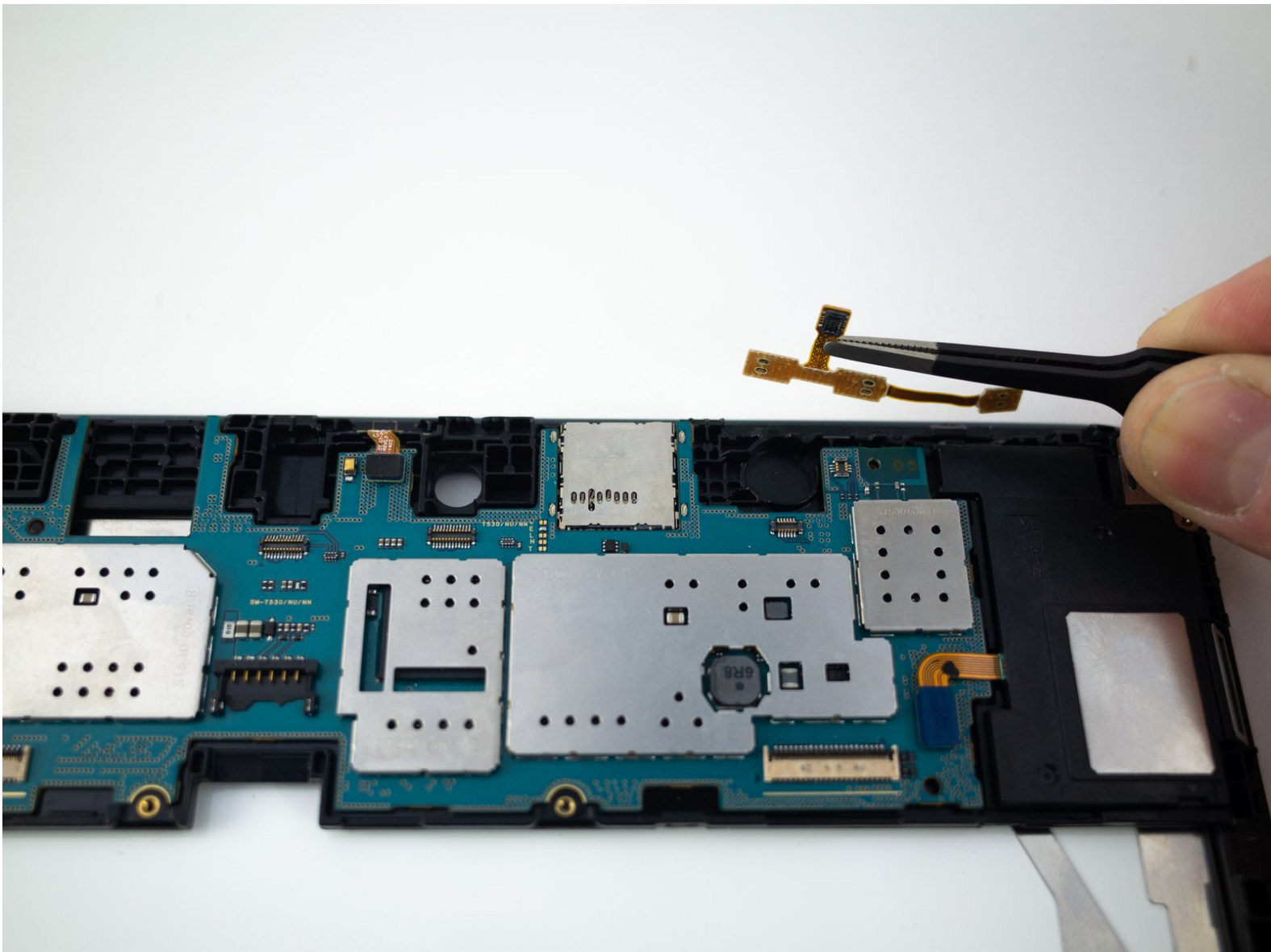




Samsung Galaxy Tab 4 10.1 Power and Volume Button Replacement

A free guide on how to replace the power and volume buttons on a Samsung Galaxy Tab 4 10.1 android tablet.

Written By: Blake Klein



This document was generated on 2019-09-28 04:42:40 PM (MST).

INTRODUCTION

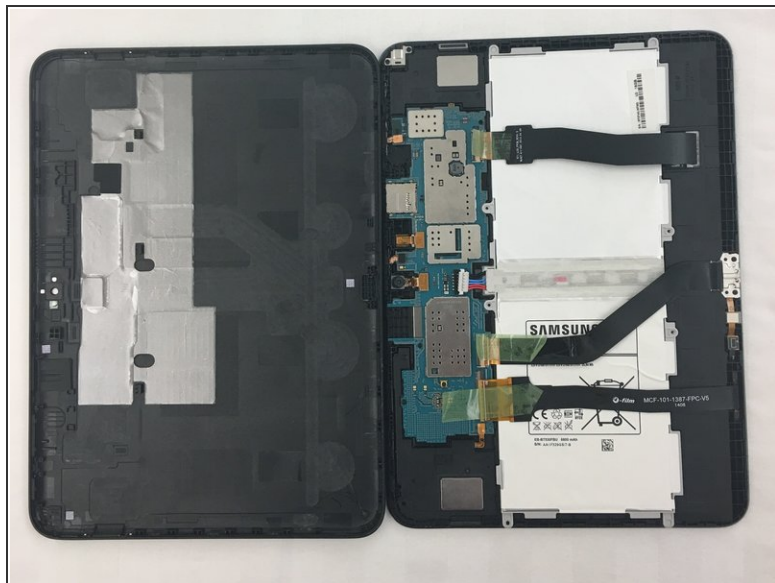
Replacement guide for the power and volume buttons on a Samsung Galaxy Tab 4 10.1 android tablet.

The battery only needs to be disconnected—skip steps 2, 3, 5, and 6.

TOOLS:

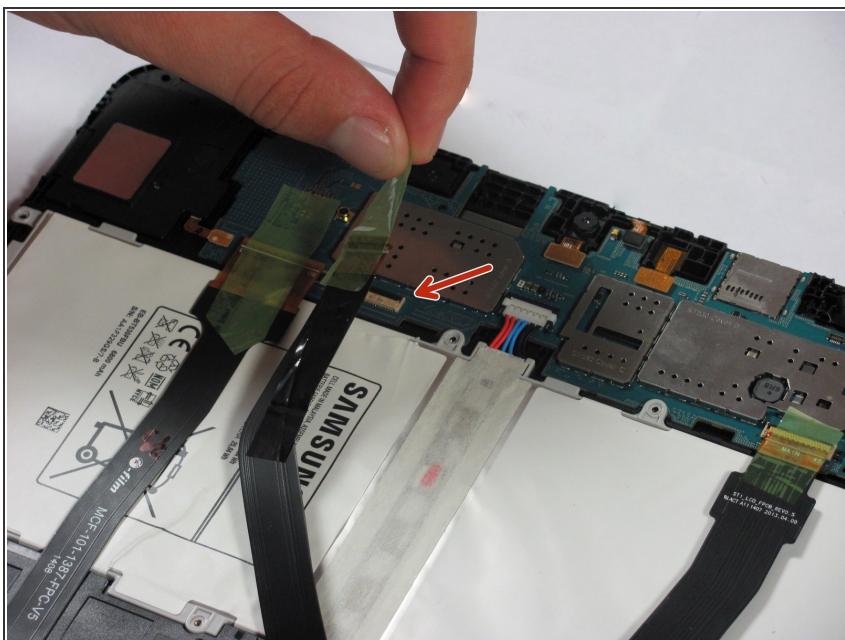
- [Phillips #00 Screwdriver](#) (1)
 - [Spudger](#) (1)
 - [ESD Safe Tweezers Blunt Nose](#) (1)
-

Step 1 — Battery



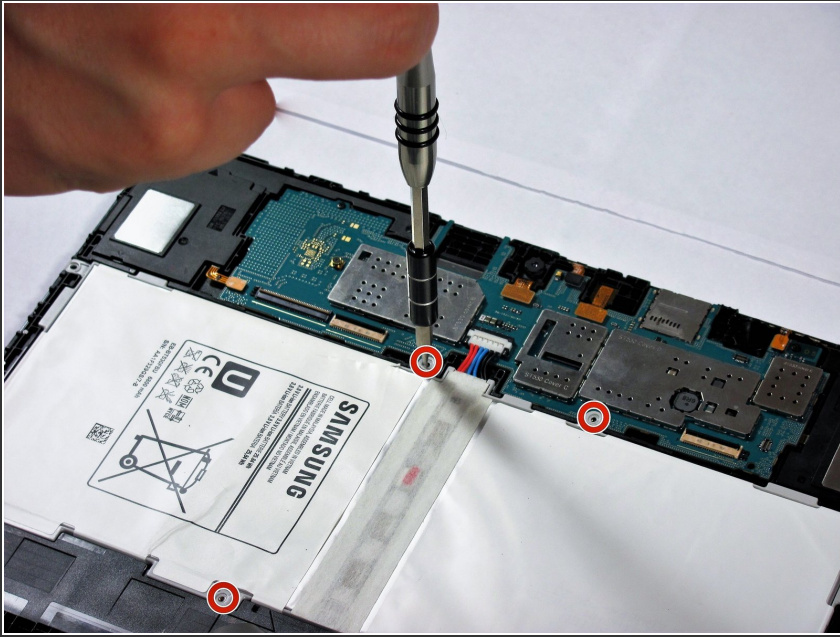
- Insert the wedge of the nylon spudger and slide it between the front and back panels until the back comes off.

Step 2



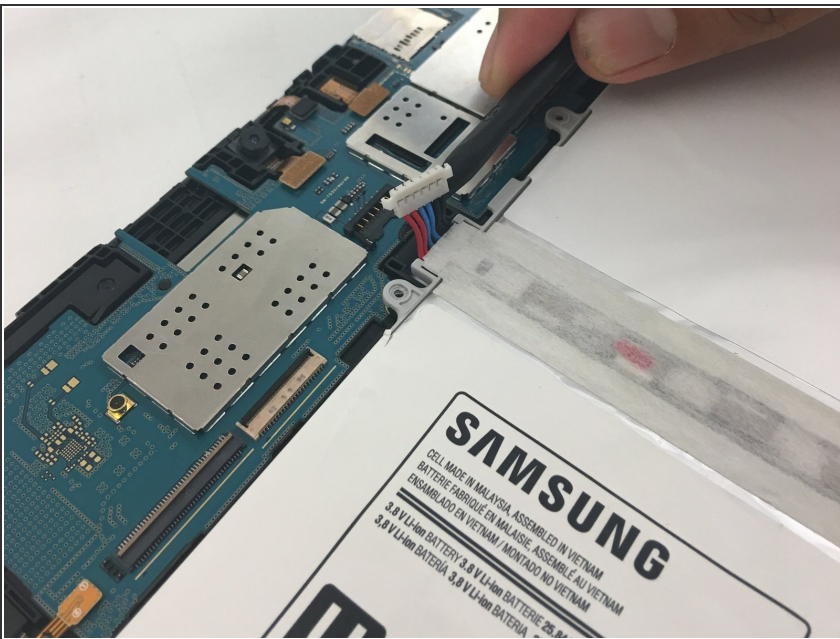
- Peel off the green tape that covers the connectors for the three black strips.
- Use the tip of a spudger or your fingernail to flip up the small retaining flaps.

Step 3



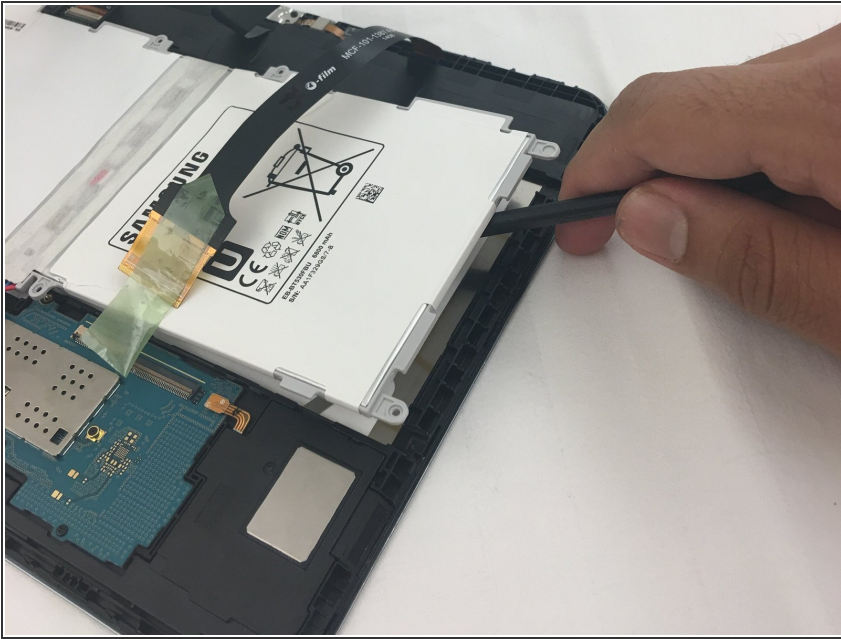
- Use a Phillips #00 screwdriver to remove the four 3.2mm screws.

Step 4



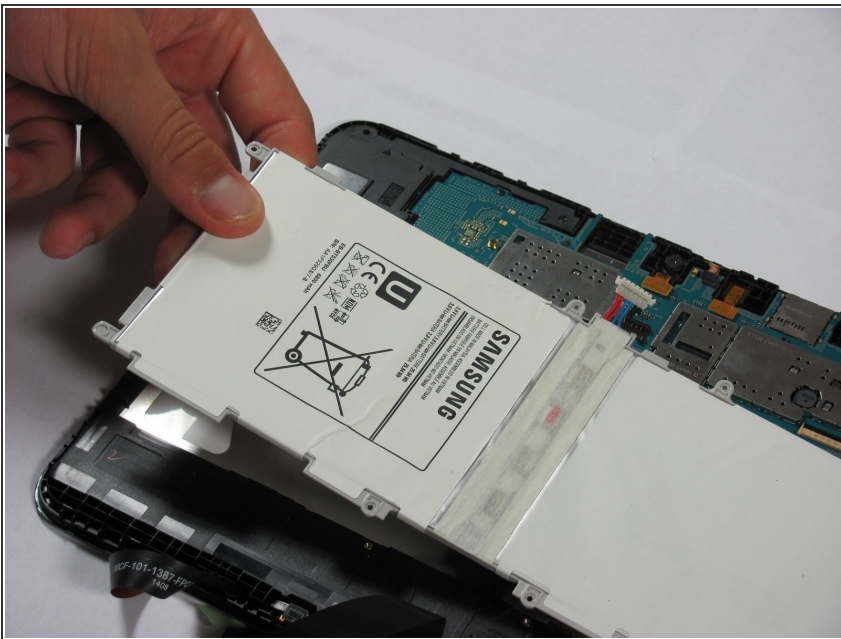
- Detach the red, blue, and black cables by prying up on the white connector from the motherboard.
 - If using fingers instead, pull evenly on the full width of the cable so the wires are not overly strained.
- ⚠ If you pull too hard you can damage the connector on the circuit board. Use a spudger or tweezers to push down on the black connector on the board while gently prying the battery connector loose. The connector breaks VERY easily.

Step 5



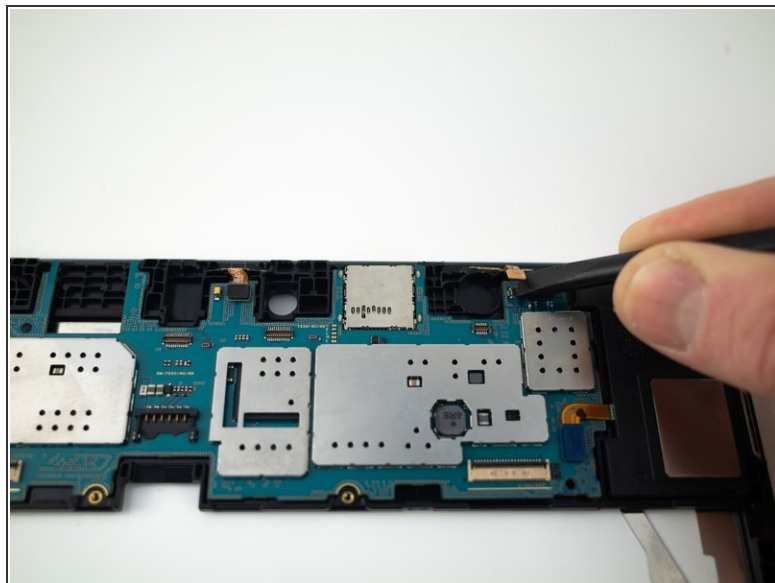
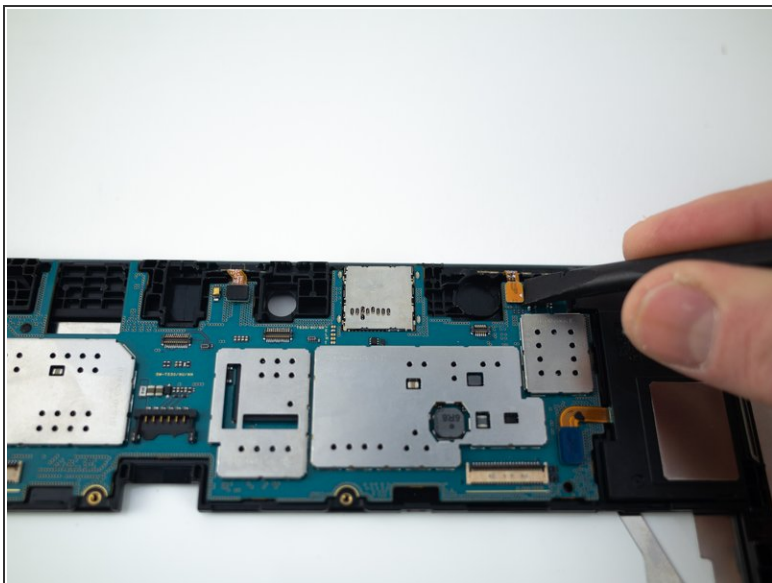
- Use the nylon spudger to remove the battery by prying up on the edges.

Step 6



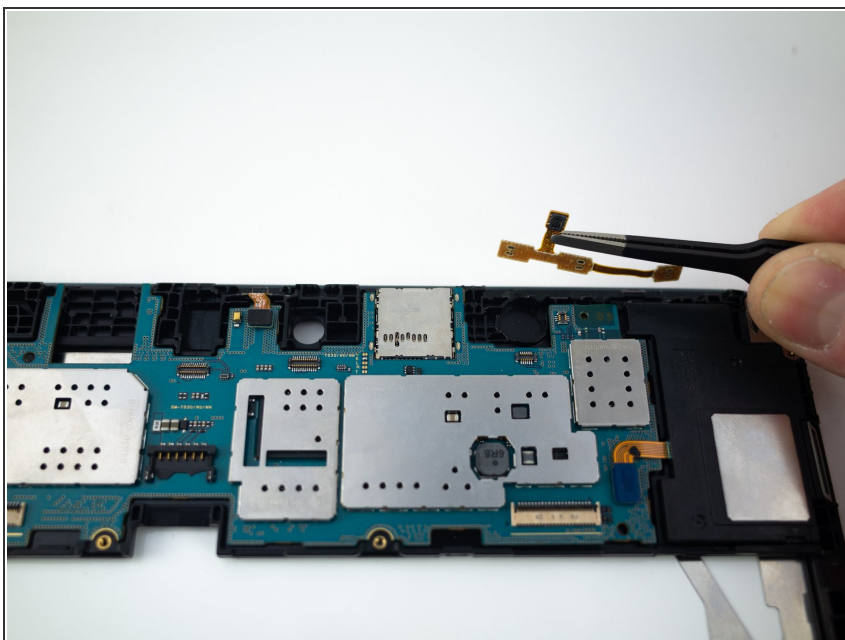
- Once the battery is loose, lift it out of the device.

Step 7 — Power and Volume Button



- Pry up and disconnect the power and volume button press-fit connector with the flat end of a spudger.

Step 8



- Remove the power and volume button ribbon cable.

To reassemble your device, follow these instructions in reverse order.

This document was generated on 2019-09-28 04:42:40 PM (MST).

