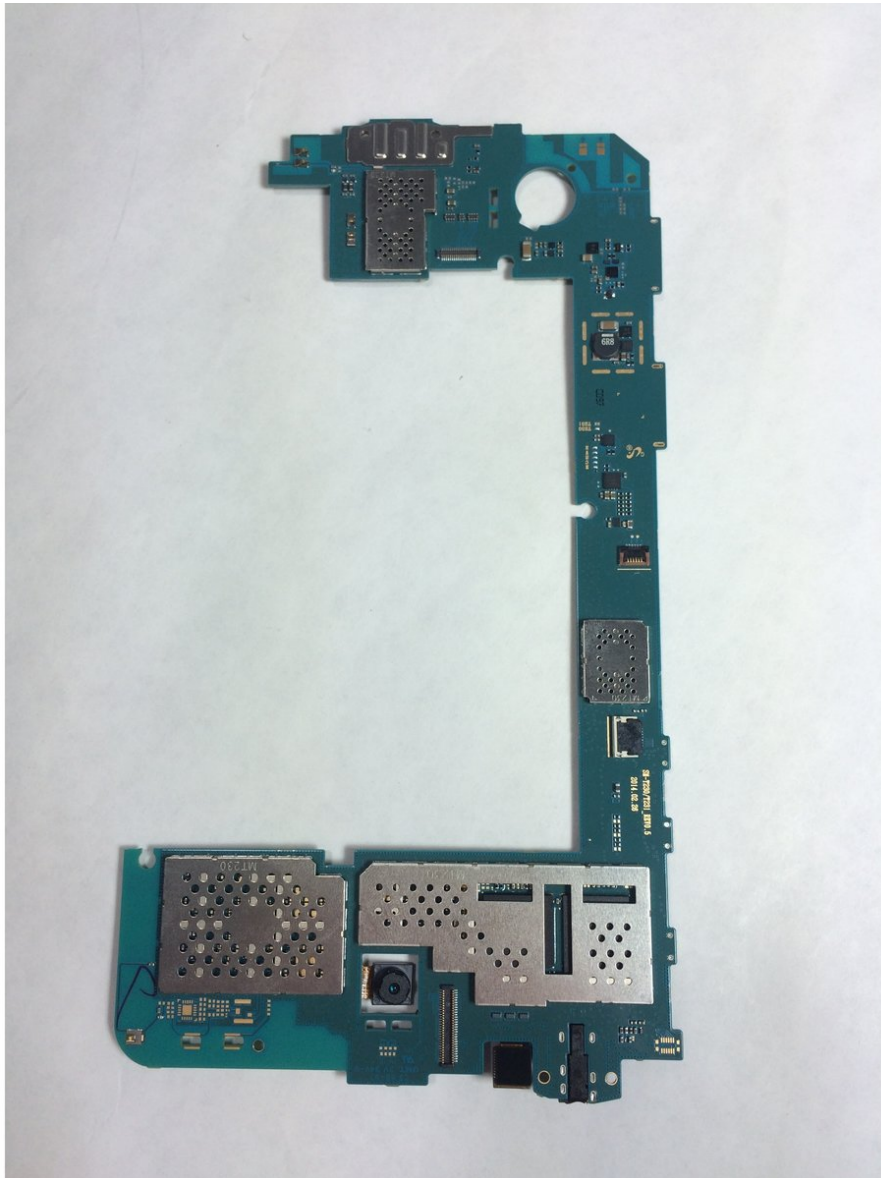




Samsung Galaxy Tab 4 7.0 Camera Replacement

If either camera on your phone (front or back) decide to stop working, they are replaceable. It will take a bit of work to get to them, but this guide will walk you through the whole process.

Written By: Aubrey Goodwin



INTRODUCTION

The front and rear facing cameras are both right next to each other and require the same tools and process for removal.



TOOLS:

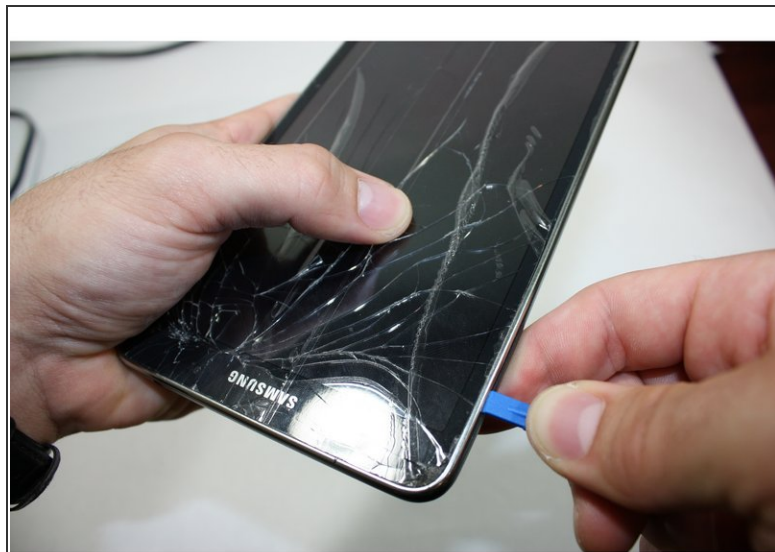
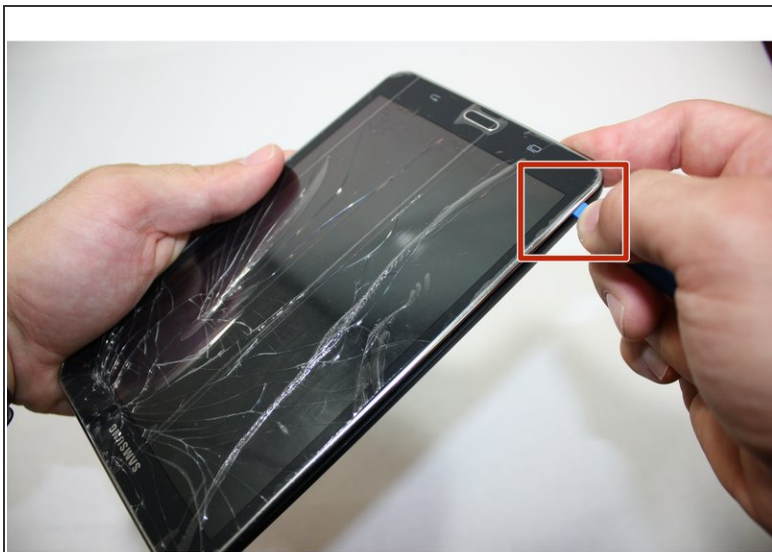
- [Phillips #000 Screwdriver](#) (1)
- [iFixit Opening Tools](#) (1)
- [Tweezers](#) (1)



PARTS:

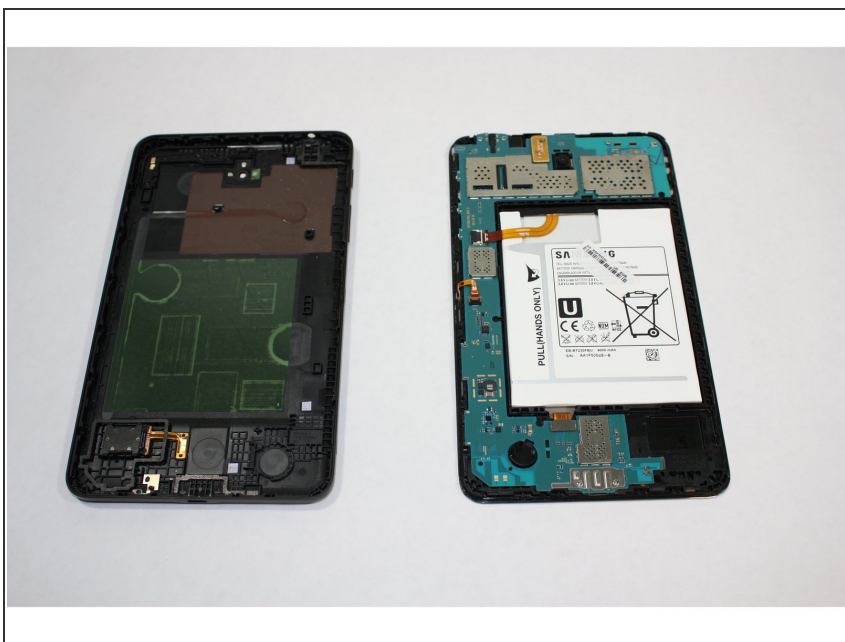
- [Galaxy Tab 4 7.0 Rear Camera](#) (1)
- [Galaxy Tab 4 7.0 Front Camera](#) (1)

Step 1 — Back Panel



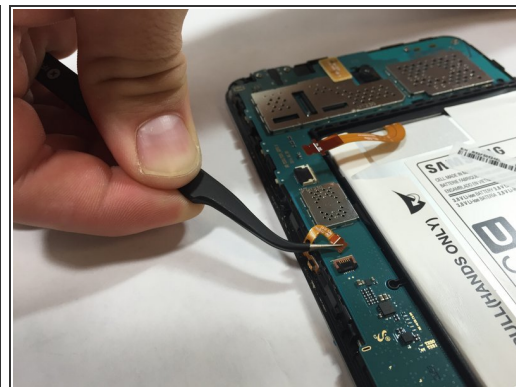
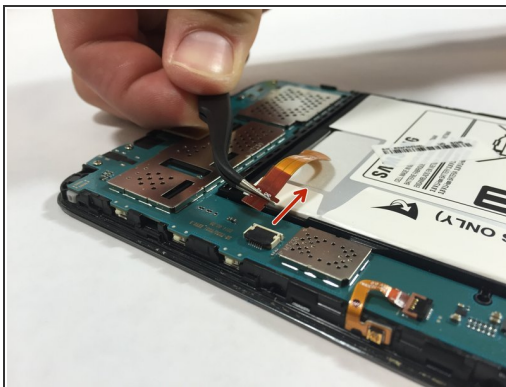
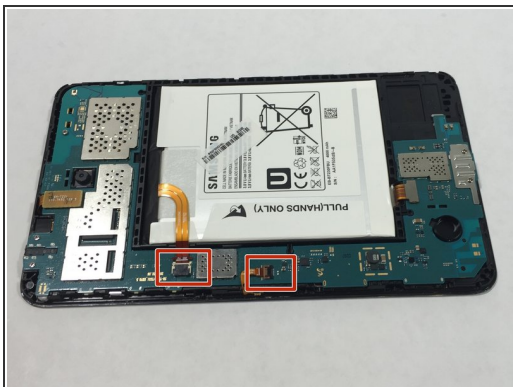
- Starting at any corner, insert the pry tool between the chrome screen frame and black phone housing.
- Slide the pry tool around the tablet while applying force to pry the screen away from the phone housing.

Step 2



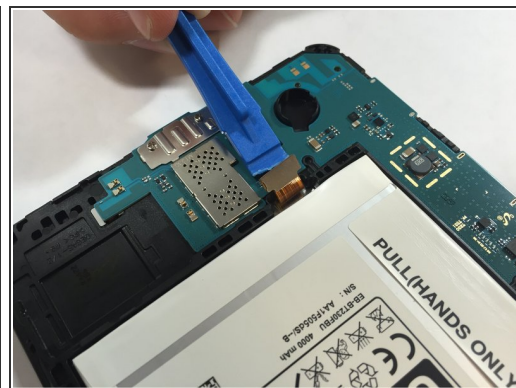
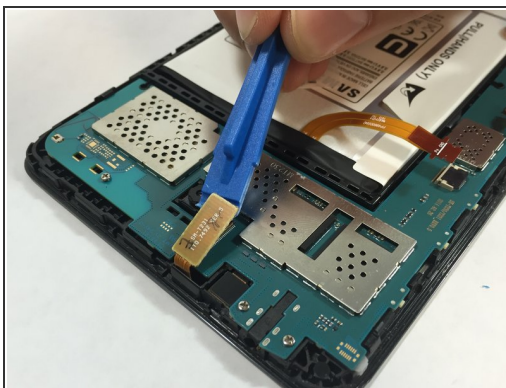
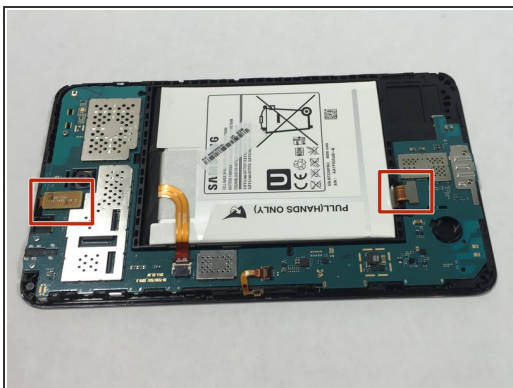
- Carefully separate the rear housing from the front panel assembly.

Step 3 — Motherboard



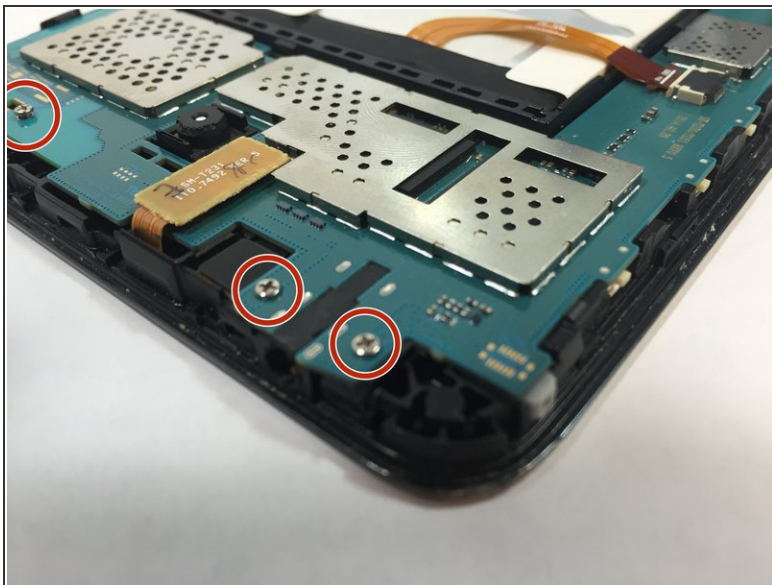
- Using the bent tweezers, carefully pull the flat cables away from the connectors.
- ⚠ Do not bend the flat cables at the tips as they may become permanently deformed.

Step 4



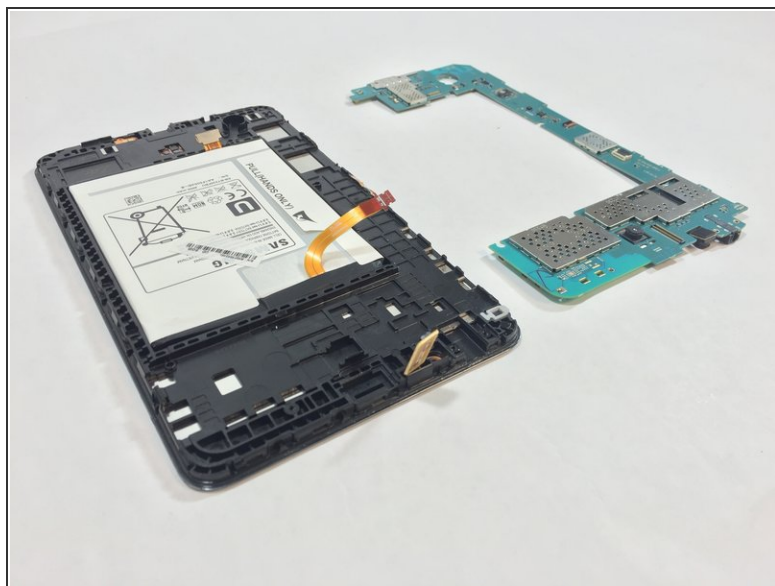
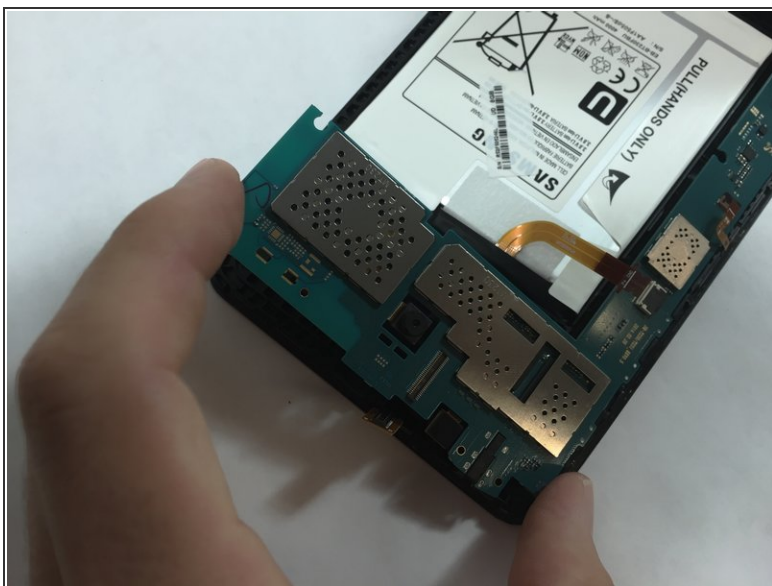
- Using the plastic opening tool, gently pry the chip connections away from the motherboard.

Step 5



- Use the Phillips 000 screwdriver to remove the remaining five 1.2 mm screws.

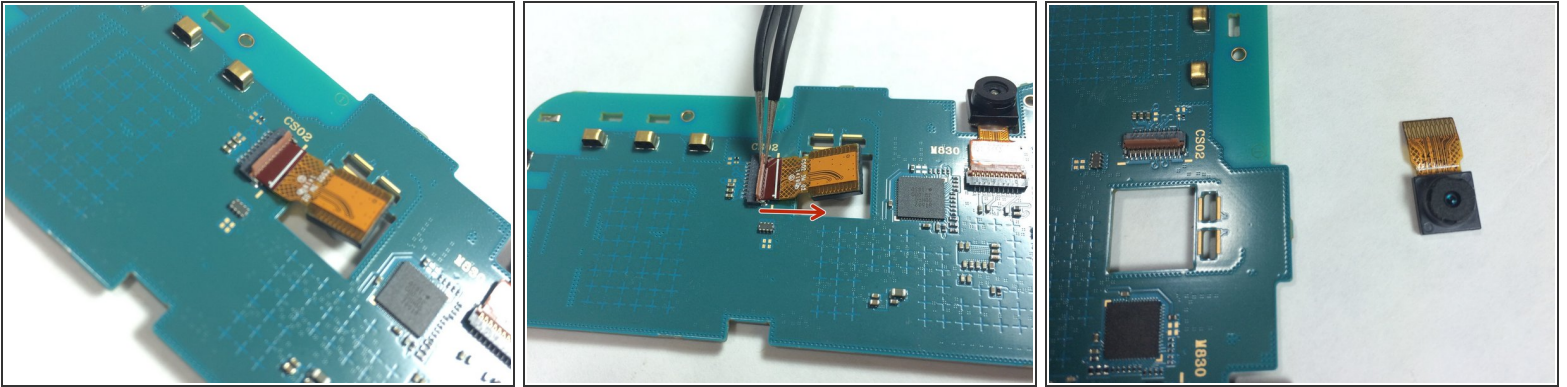
Step 6



⚠ Use extreme care while removing the motherboard to avoid damaging the component.

- Remove the motherboard by rotating it away from the rest of the phone as shown in the first photo.

Step 7 — Camera



- With the tweezers grab the base of the wire harness and slide it outward in the direction shown.
 - ⓘ This can be done for either camera on the tablet.

To reassemble your device, follow these instructions in reverse order.