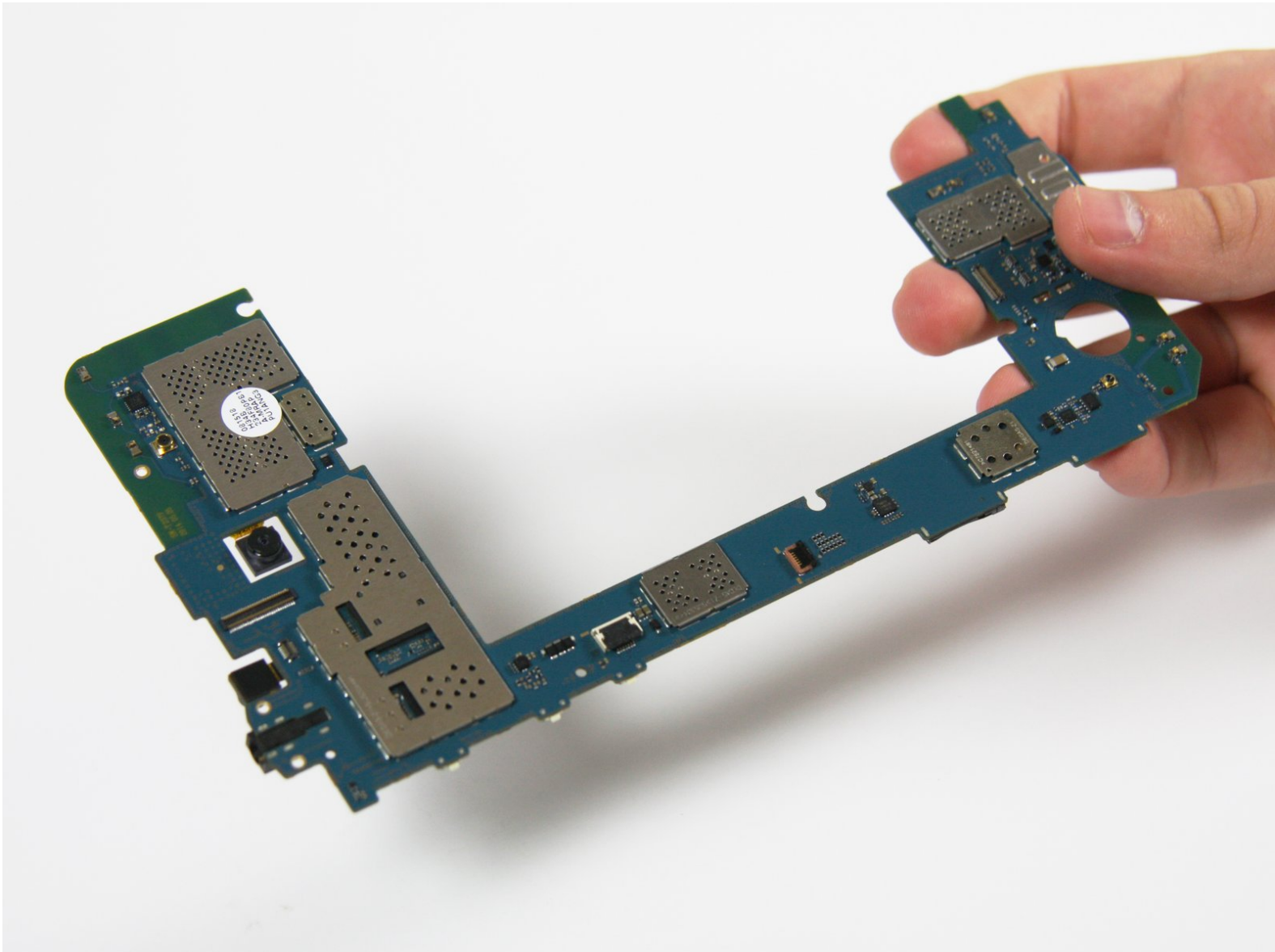




# Samsung Galaxy Tab 4 7.0 Sprint Front-Facing Camera Replacement

Use this guide to replace the front-facing camera of the Samsung Galaxy Tab 4 7.0 Sprint.

Written By: Valentina Franco



# INTRODUCTION

If your camera is taking blurry pictures, or otherwise not working properly, it may need to be replaced. This guide will demonstrate how to replace your tablet's front-facing camera.

---

## TOOLS:

- [iFixit Opening Tools](#) (1)
  - [Tweezers](#) (1)
  - [Phillips #00 Screwdriver](#) (1)
-

## Step 1 — Motherboard



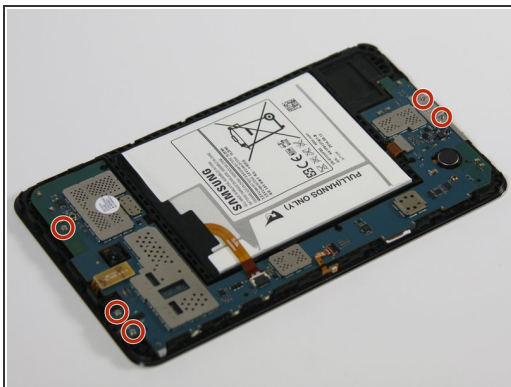
- Insert the plastic opening tool into the gap between the device frame and the back panel on any side of the device.
- Slide the opening tool around the edges of the device to disconnect the back panel from the frame.

## Step 2



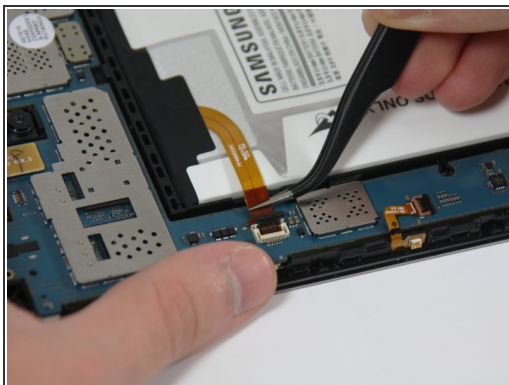
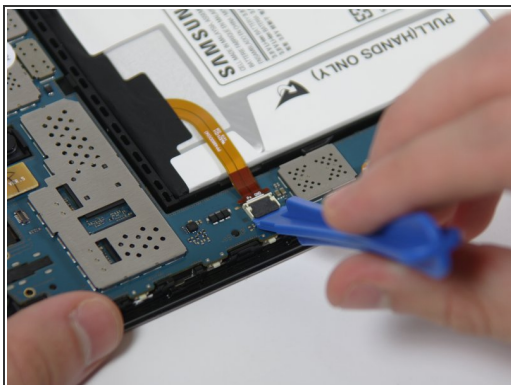
- Carefully remove the back panel from the frame of the device.

## Step 3



- Using a Phillips #00 Screwdriver, remove the five 4 mm screws connecting the motherboard to the frame of the device.

## Step 4



- Use the plastic opening tool to unlock the battery wire from the motherboard by flipping-up the small retaining flap.
- Use the tweezers to carefully remove the battery wire from the motherboard by pulling it away from the retainer flap.

## Step 5



- Use the plastic opening tool to unlock the wire on the narrow section of the motherboard by flipping-up the retaining flap.
- Use the tweezers to carefully remove the wire from the motherboard by sliding it away from the retaining flap.

## Step 6



- Disconnect the wire near the bottom of the motherboard by placing the plastic opening tool under the edge of the connector to flip it up.

## Step 7



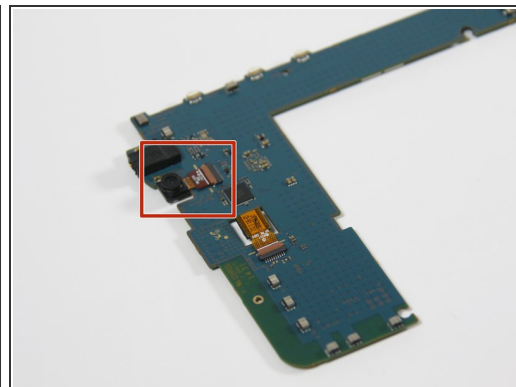
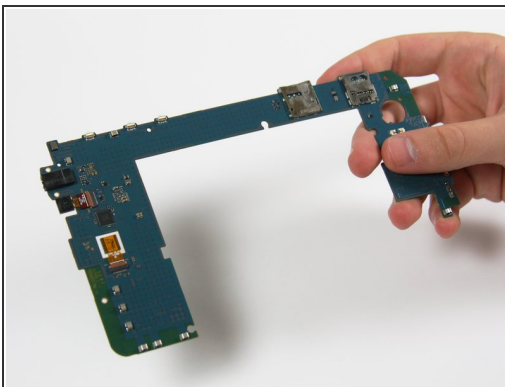
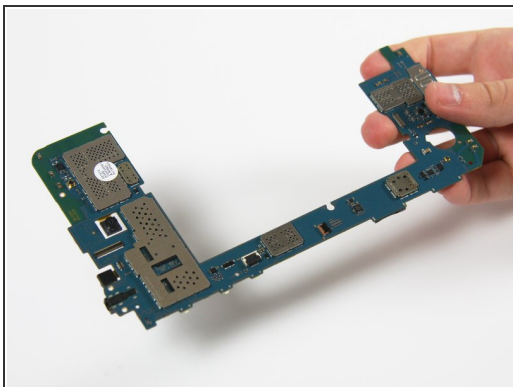
- Disconnect the wire near the top of the motherboard by placing the plastic opening tool under the edge of the connector to flip it up.

## Step 8



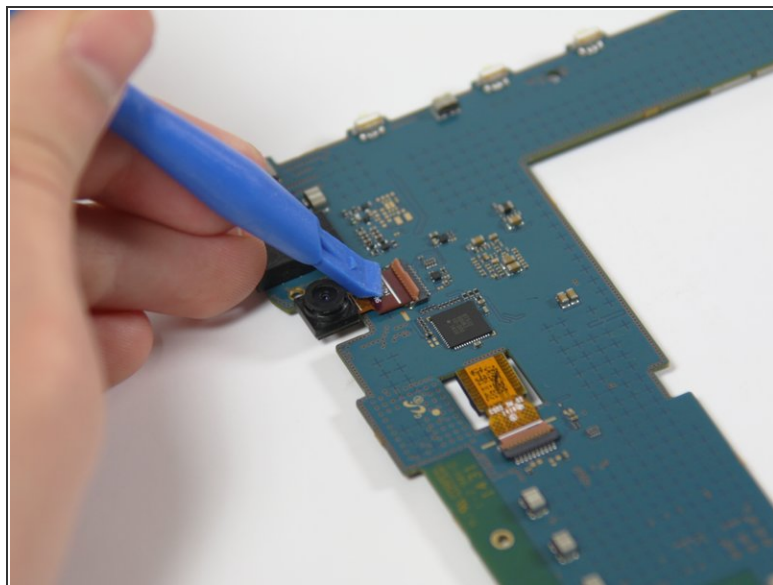
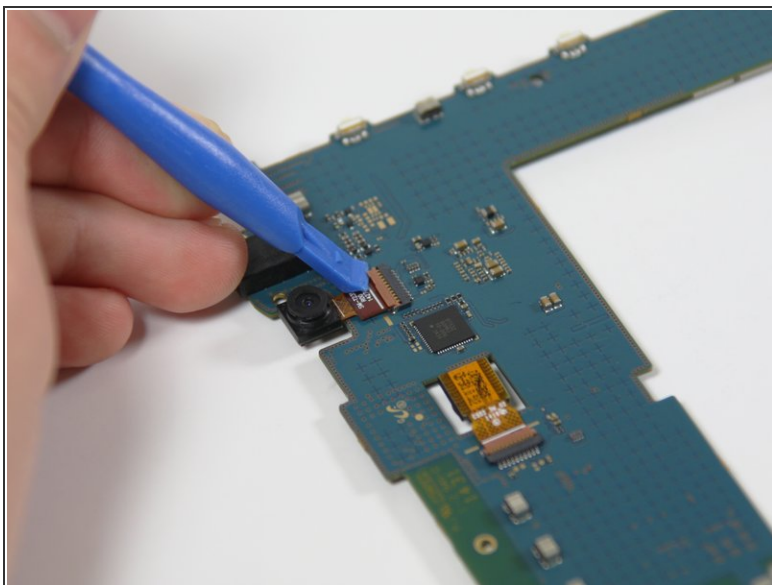
- Gently remove the motherboard from the frame of the device by grabbing the top and bottom ends and pulling it toward you.
- ⓘ Several plastic tabs keep the motherboard in place, so you will have to apply some force.

## Step 9 — Front-Facing Camera



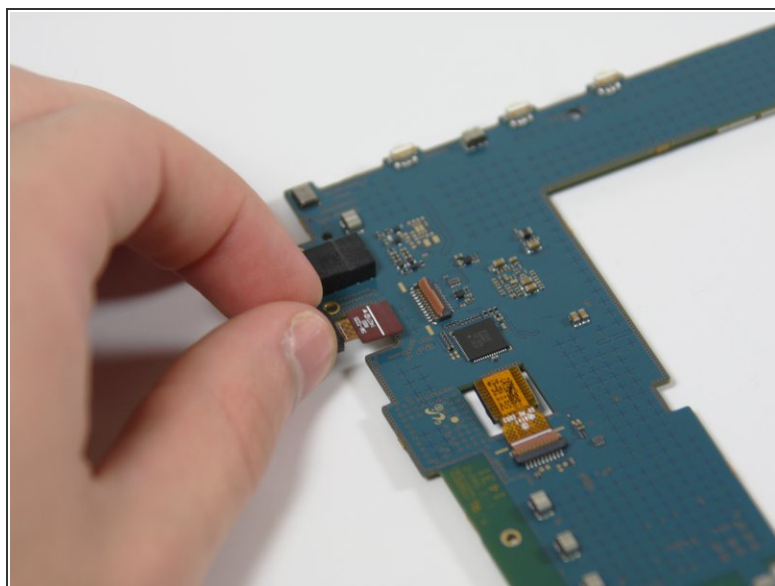
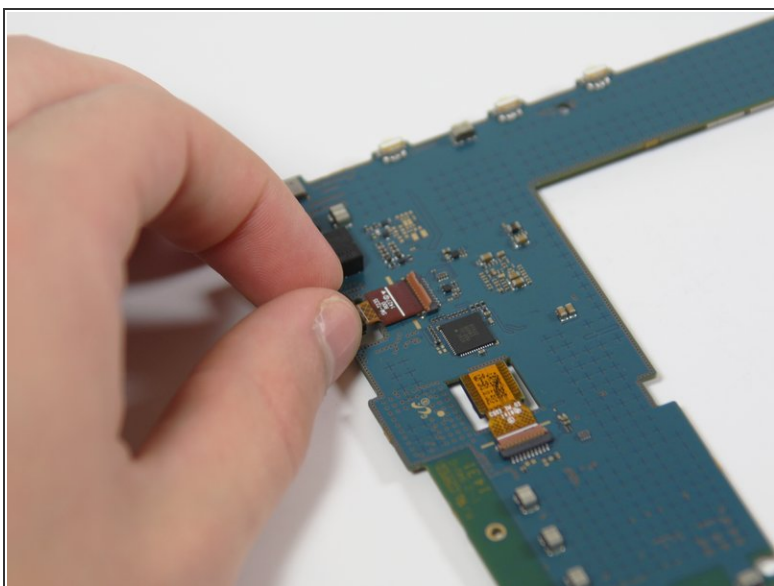
- Flip the motherboard over to view the back side.
- Locate the front-facing camera on the motherboard.

## Step 10



- Use a plastic opening tool to unlock the front-facing camera wire from the motherboard by flipping-up the retainer flap.

## Step 11



- Use your fingers to grip the camera and carefully pull it out and away from the motherboard.

To reassemble your device, follow these instructions in reverse order.