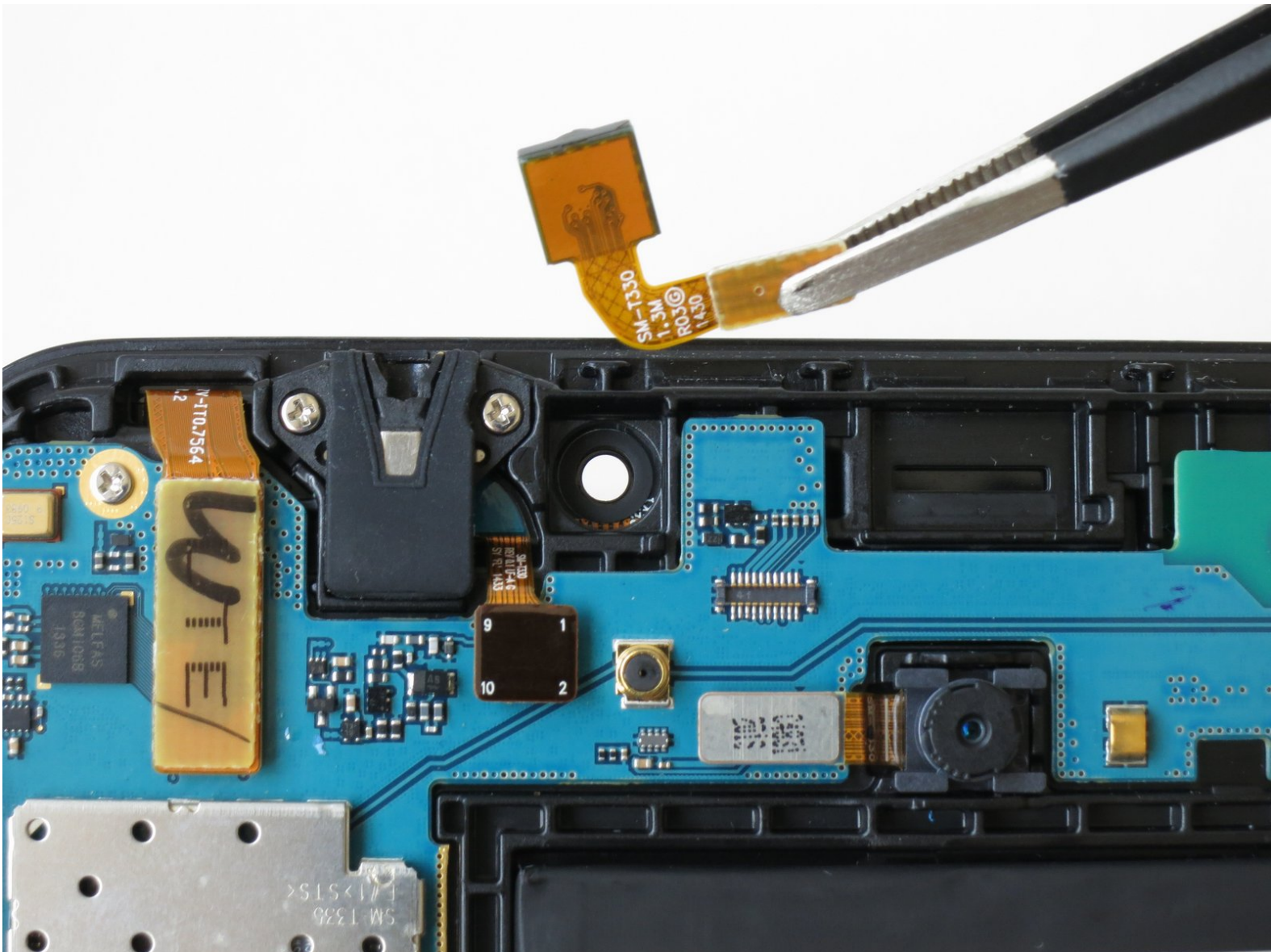




Samsung Galaxy Tab 4 8.0 Verizon Front Facing Camera Replacement

This guide details the steps necessary to replace the front facing camera of your Samsung Galaxy Tab 4 8.0 Verizon.

Written By: Ofelia Cruz



This document was generated on 2019-09-30 03:34:27 PM (MST).

INTRODUCTION

After damaging your front camera, you might feel intimidated to dig into the Samsung Galaxy Tab 4 8.0. Replacing the front camera will only require, a plastic opening tool, tweezers, muscle strength, and these easy to follow instructions. The replacement will be a breeze, but be sure not use *too* much force when prying the device open.



TOOLS:

- [Tweezers](#) (1)
- [iFixit Opening Tools](#) (1)



PARTS:


- [Galaxy Tab 4 8.0 Front Camera](#) (1)

Step 1 — Rear Case



 Before disassembling your Samsung Galaxy Tab 4 8.0, be sure it is powered off.

- At the top of the tablet, nudge the blue plastic opening tool between the back plastic casing and the front panel's metal rim.

 Do not use excessive force when prying the clips, fastening the casing together, open because they can easily break.

Step 2



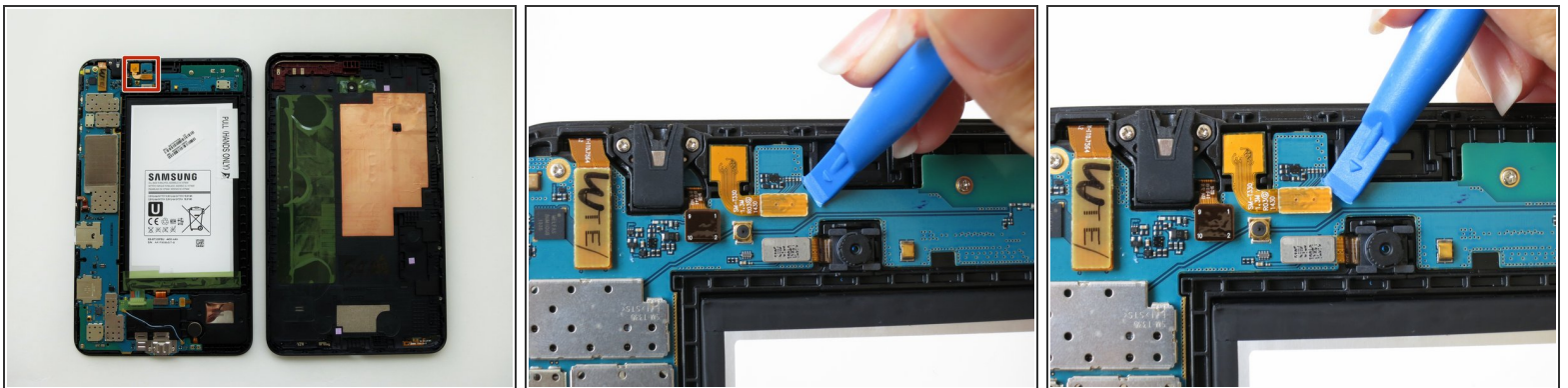
- Continue prying the blue plastic opening tool along the perimeter of the tablet to separate the back plastic casing from the front assembly panel.
- ⓘ As right-handers, we found it easiest to move clockwise and use more pressure around the corners to facilitate the process.
- ⓘ You might hear several popping noises caused by the plastic clips coming undone.

Step 3



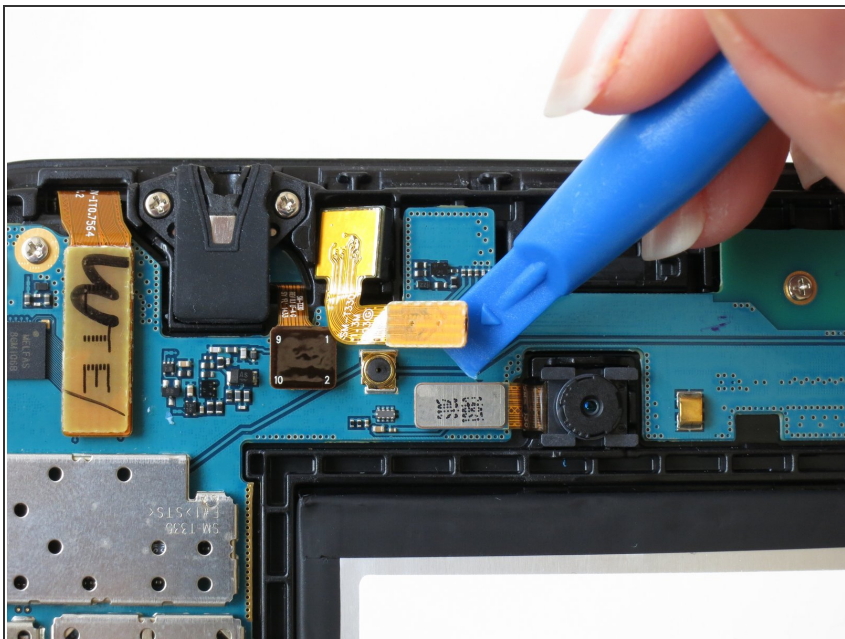
- To avoid damaging the screen, gently set the tablet with the LCD screen faced down.
- Firmly grasp the back plastic casing and lift it away from the front assembly panel.

Step 4 — Front Facing Camera



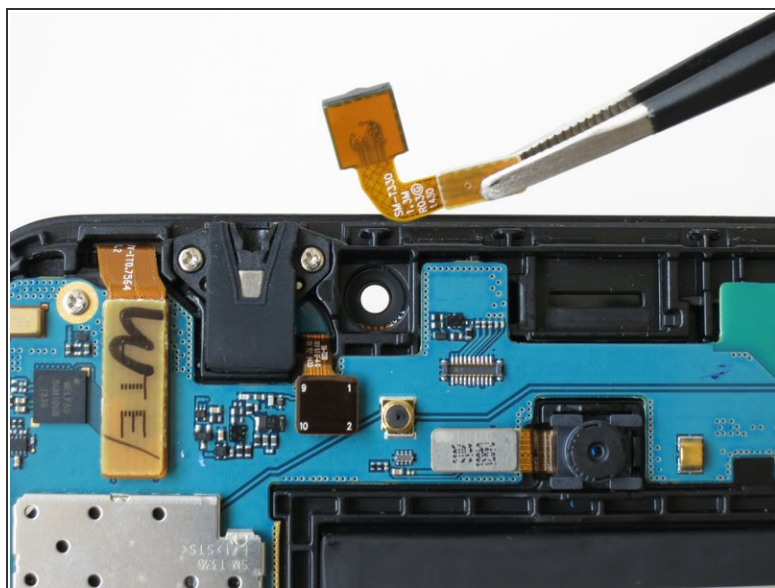
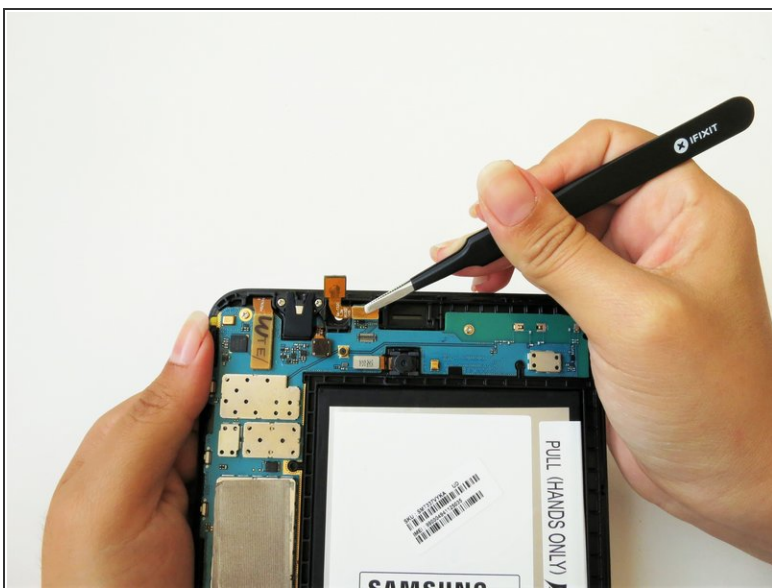
- The front camera's ribbon cable is located just above the battery, slightly to the left.
- Carefully insert the flat end of the blue plastic opening tool under the connector at the end of the ribbon cable.

Step 5



- Slightly apply pressure and move the blue plastic opening tool downwards to pop the front camera's gold rectangular connector from its socket on the motherboard.

Step 6



- Squeeze the gold rectangular piece with the tweezers to gently lift it from its pit.

To reassemble your device, follow these instructions in reverse order.