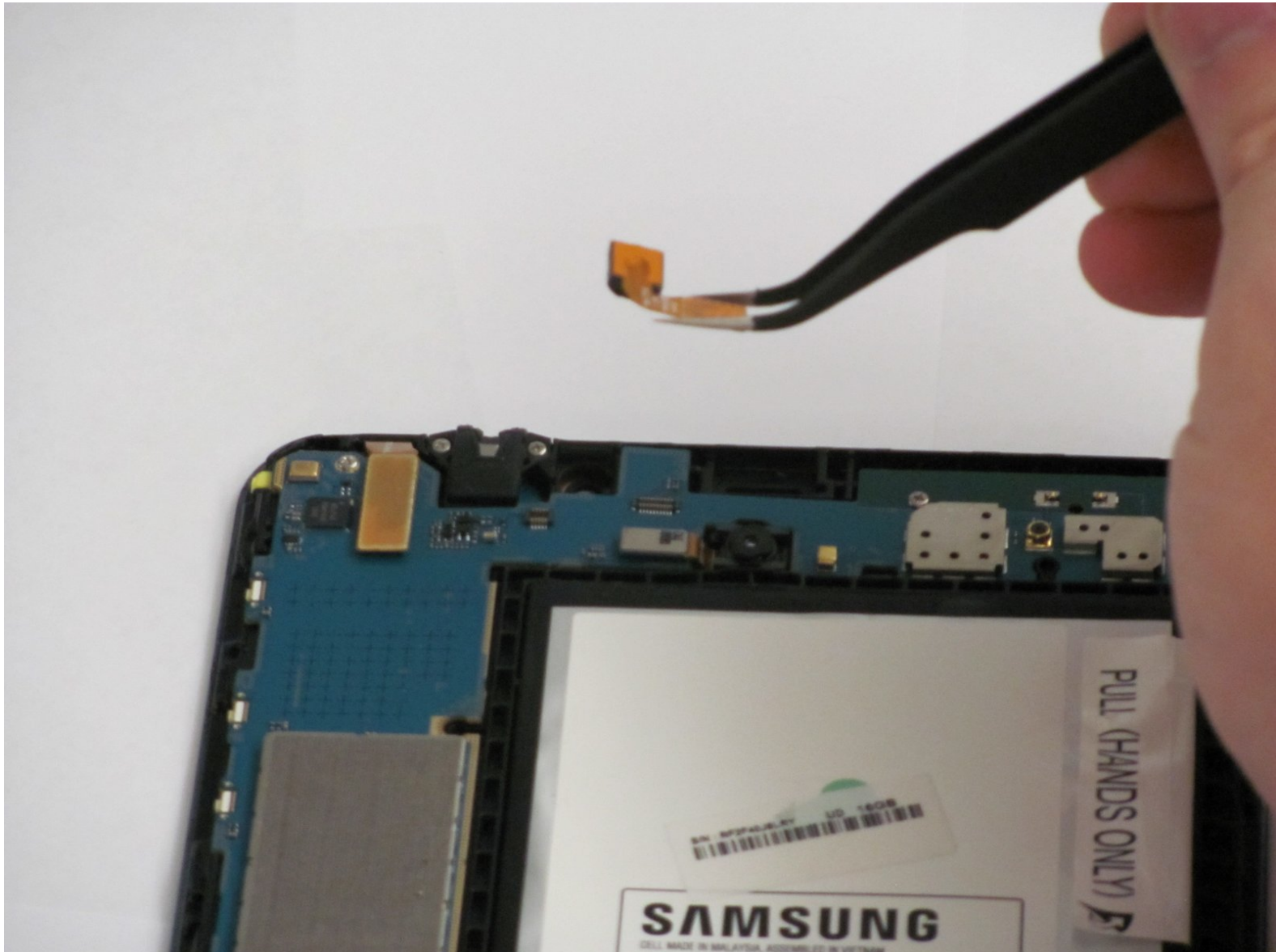




# Samsung Galaxy Tab 4 8.0 Wi-Fi Front Facing Camera Replacement

After moderate tinkering and a couple of simple steps, the front facing camera will be replaced.

Written By: Cameron Morrow



## INTRODUCTION

This guide will allow you to take off the front facing camera after removing the rear case. You will learn how to disassemble the camera from the tablet.



### TOOLS:

- [iFixit Opening Tools](#) (1)
- [Tweezers](#) (1)



### PARTS:

- [Galaxy Tab 4 8.0 Front Camera](#) (1)

## Step 1 — Rear Case



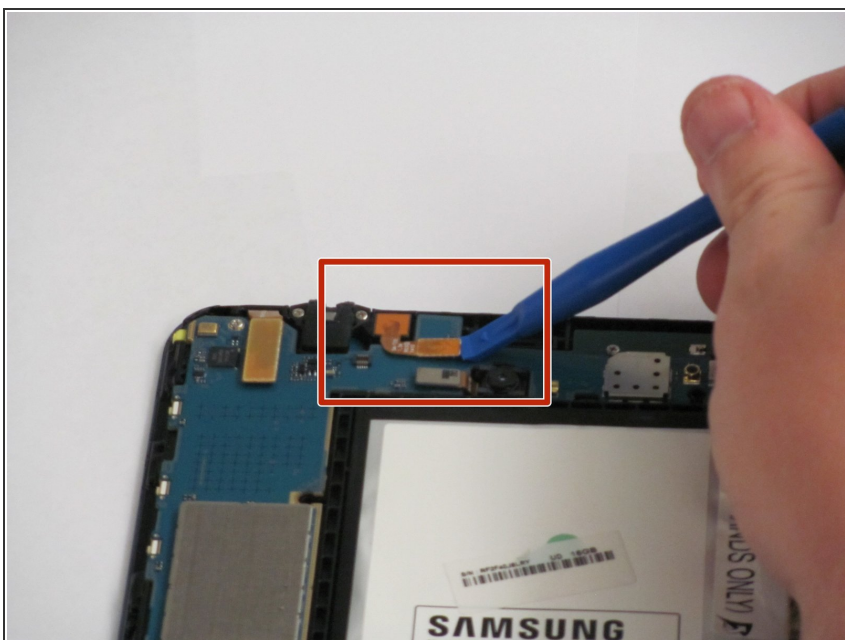
- ⓘ Before you begin the replacement process, make sure the tablet is completely powered off.
- Gently insert the plastic opening tool between the metal rim and the back plastic casing at the bottom of the tablet and pry the back casing away from the device. Continue to separate the back panel of the device from the front assembly.
- ⓘ Right-handed users will probably be more comfortable prying in a clockwise movement, while left-handed users will feel more comfortable doing a counter clockwise movement.
- ⓘ When taking off the rear case there will be periodic clicking noises. Do not worry about those noises. They are just the rear case being disconnected.
- ⚠ Be careful not to use too much force as the plastic clips can easily be broken.

## Step 2



- Place the tablet screen down on a clean surface.
- Grasp the back panel and lift it from the device.

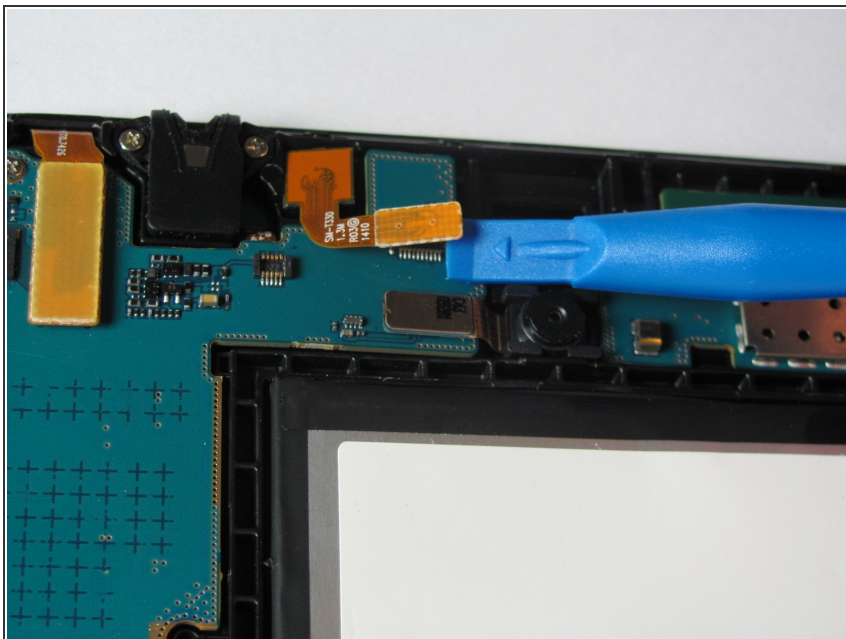
## Step 3 — Front Facing Camera



- The front facing camera's ribbon cable is located at the top edge of the motherboard, slightly left of center.
- Slide the flat end of the blue plastic opening tool underneath the connector at the end of the ribbon cable.

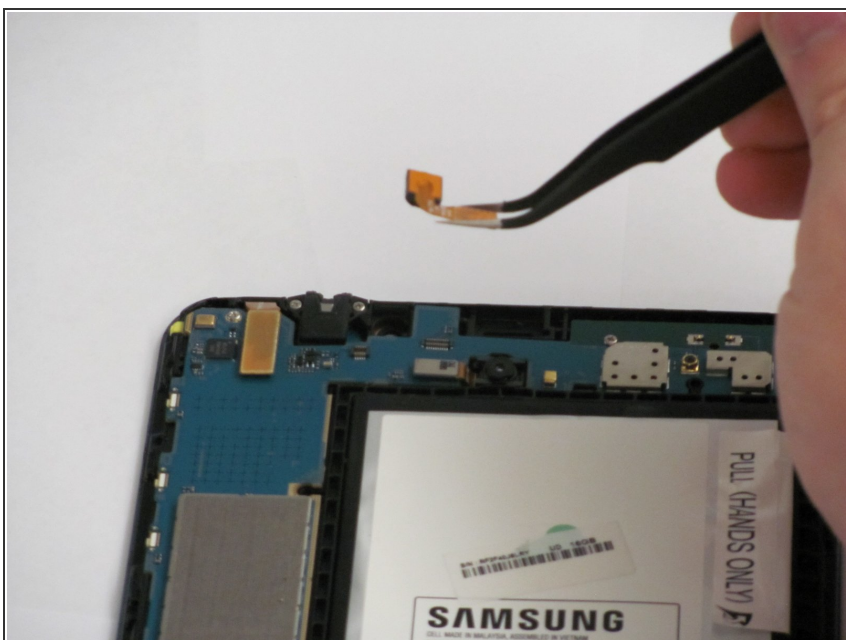


## Step 4



- Slightly apply pressure and move the blue plastic opening tool downwards to pop the front camera's gold rectangular connector from its socket on the motherboard.

## Step 5



- Squeeze the gold rectangular piece with the tweezers to gently lift it from its pit.

To reassemble your device, follow these instructions in reverse order.