



Samsung Galaxy Tab 4 Motherboard Replacement

If you are trying to replace the cameras or the vibrator, use this guide to properly disassemble your Samsung Galaxy Tab 4 7.0 Sprint.

Written By: Peter Oliver



INTRODUCTION

This guide will demonstrate how to disassemble your Samsung Galaxy Tab 4 7.0 Sprint in preparation for replacing the front-facing camera, rear-facing camera, or the vibrating mechanism.

TOOLS:

- [iFixit Opening Tools](#) (1)
 - [Tweezers](#) (1)
 - [Phillips #00 Screwdriver](#) (1)
-

Step 1 — Motherboard



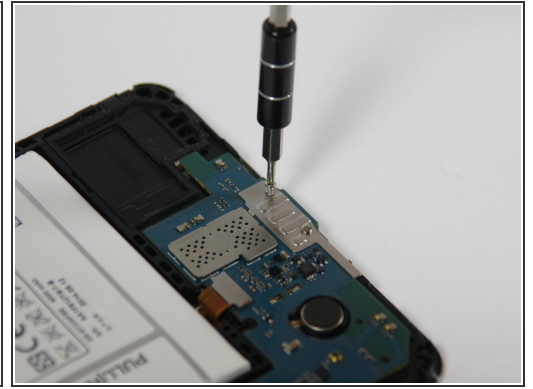
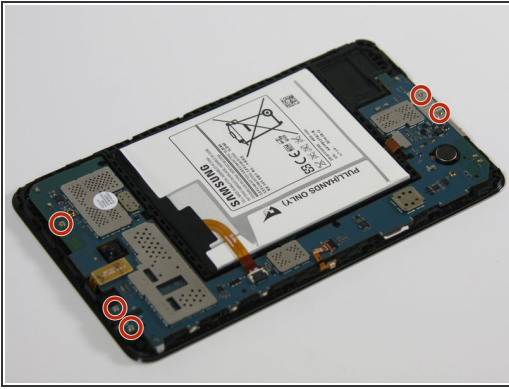
- Insert the plastic opening tool into the gap between the device frame and the back panel on any side of the device.
- Slide the opening tool around the edges of the device to disconnect the back panel from the frame.

Step 2



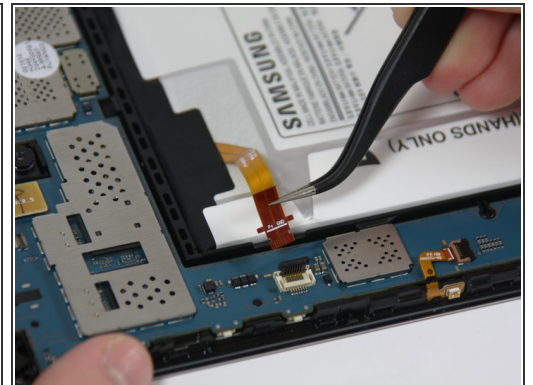
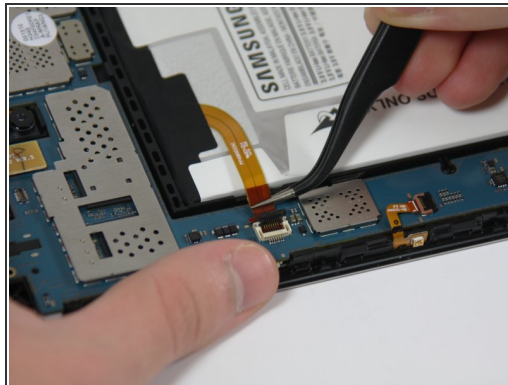
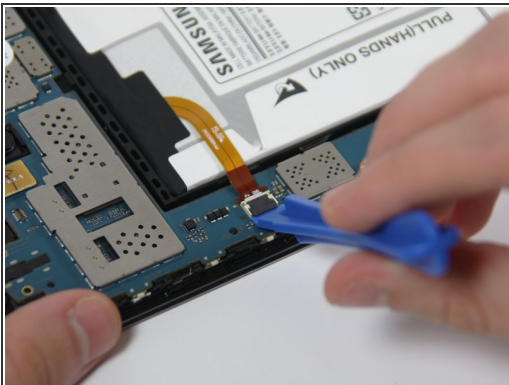
- Carefully remove the back panel from the frame of the device.

Step 3



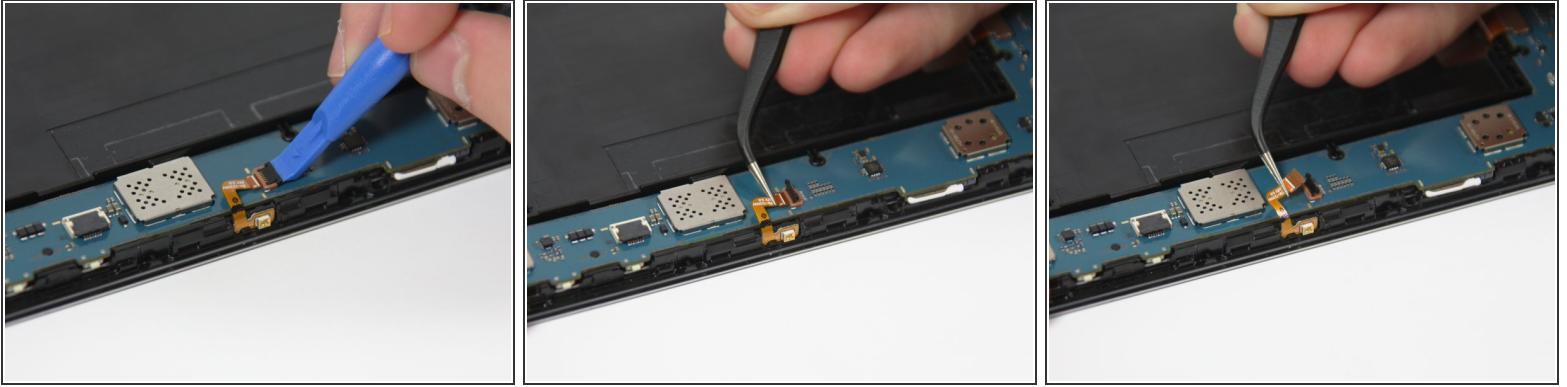
- Using a Phillips #00 Screwdriver, remove the five 4 mm screws connecting the motherboard to the frame of the device.

Step 4



- Use the plastic opening tool to unlock the battery wire from the motherboard by flipping-up the small retaining flap.
- Use the tweezers to carefully remove the battery wire from the motherboard by pulling it away from the retainer flap.

Step 5



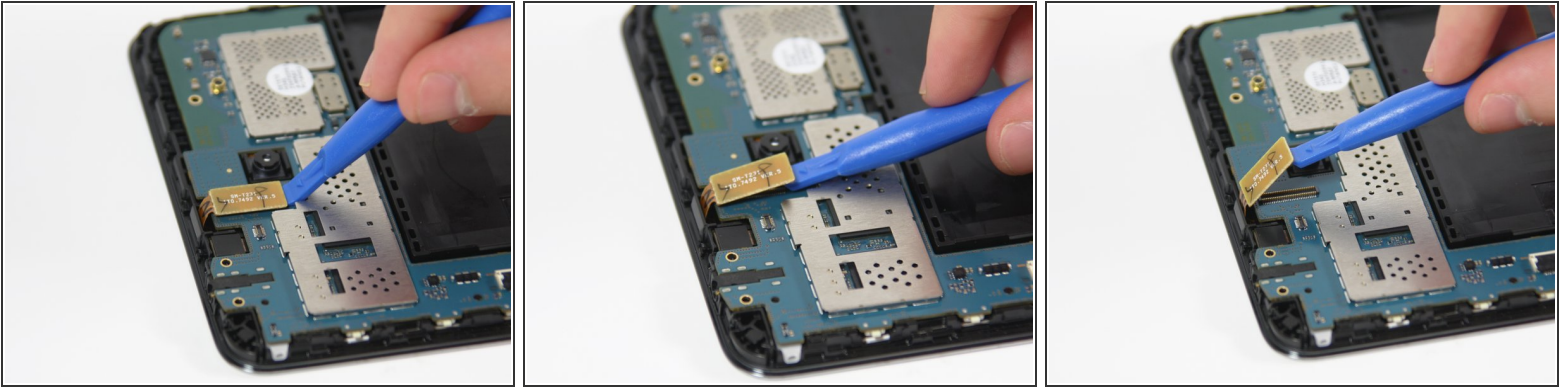
- Use the plastic opening tool to unlock the wire on the narrow section of the motherboard by flipping-up the retaining flap.
- Use the tweezers to carefully remove the wire from the motherboard by sliding it away from the retaining flap.

Step 6



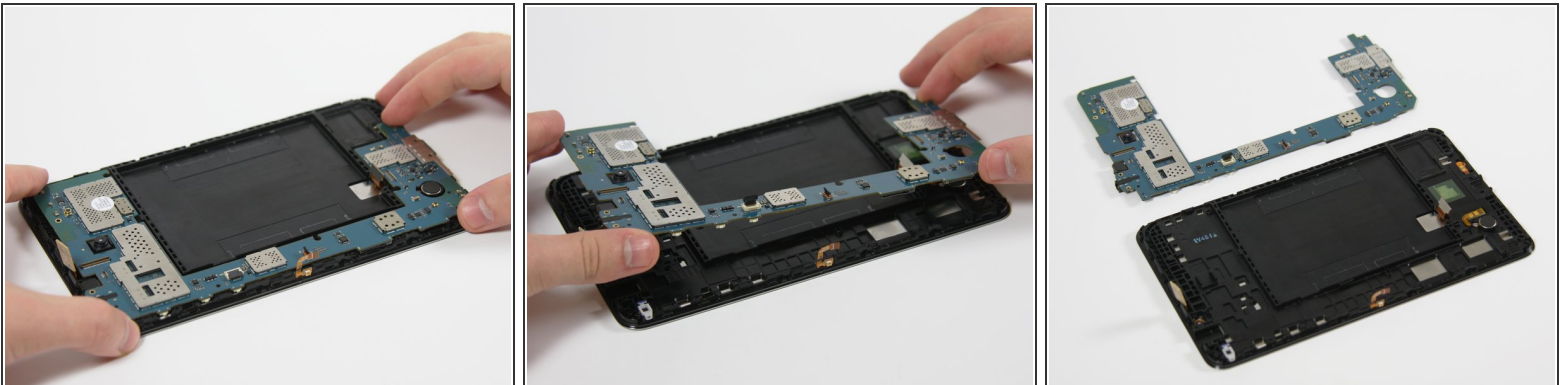
- Disconnect the wire near the bottom of the motherboard by placing the plastic opening tool under the edge of the connector to flip it up.

Step 7



- Disconnect the wire near the top of the motherboard by placing the plastic opening tool under the edge of the connector to flip it up.

Step 8



- Gently remove the motherboard from the frame of the device by grabbing the top and bottom ends and pulling it toward you.
- ⓘ Several plastic tabs keep the motherboard in place, so you will have to apply some force.

To reassemble your device, follow these instructions in reverse order.