



Samsung Galaxy Tab 7.0 Sprint Motherboard Replacement

This guide will teach the reader how to replace the motherboard of a Samsung Galaxy Tab 7.0 Sprint.

Written By: Peter Van Ausdeln



INTRODUCTION

This guide will teach the reader how to replace the motherboard of a Samsung Galaxy Tab 7.0 Sprint. This will require removing other parts of the device before reaching the motherboard.



TOOLS:

- [iFixit Opening Tools](#) (3)
- [Tri-point Y0 Screwdriver](#) (1)
- [Phillips #00 Screwdriver](#) (1)
- [Metal Spudger](#) (1)



PARTS:

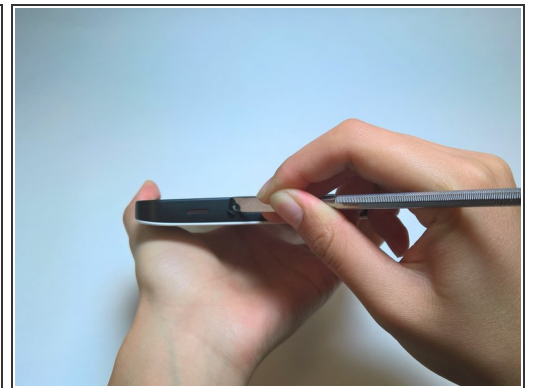
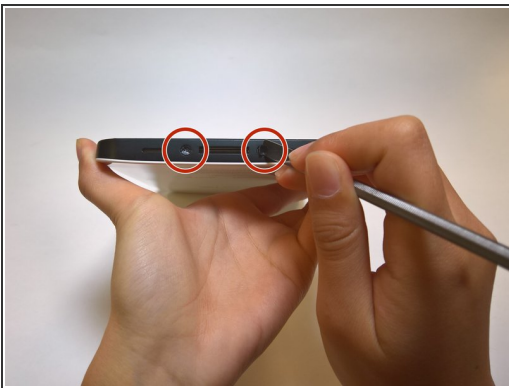
- [Samsung Galaxy Tab 7.0 Sprint Motherboard](#) (1)

Step 1 — Front Panel



- Fully power off the device.
- Disconnect and remove any cables that are connected to the device (i.e. chargers or headphones).
- Place the device on a flat, stable, and clean surface.

Step 2



- Remove the plastic tabs on the bottom of the device using the metal spudger, as shown in the pictures.
- ☑ Make sure you have a place to store small parts like this where they are easily accessible but hard to lose.

Step 3




- Using a Tri-Point YO Screwdriver, remove the two 4.1mm Tri-Wing screws.
- ☞ Place the removed screws in a location similar to where you placed the pads that you removed in the previous step.

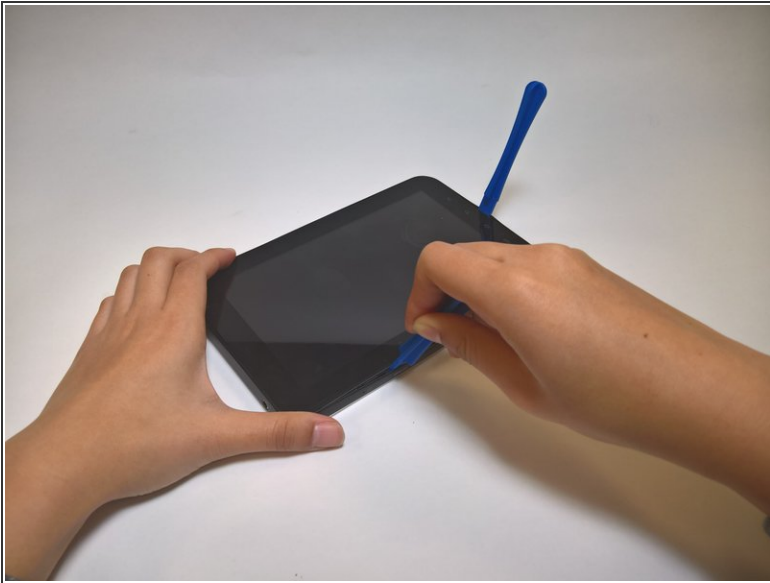
Step 4



- Wedge a plastic opening tool between the front and back panel, on the bottom right corner.
- Slowly push the tool down to make a small gap between the front panel and the back panel.
- Holding the tool steady, run the tool along the bottom part of the device from right to left. This will make the gap between the front panel and the back panel bigger.

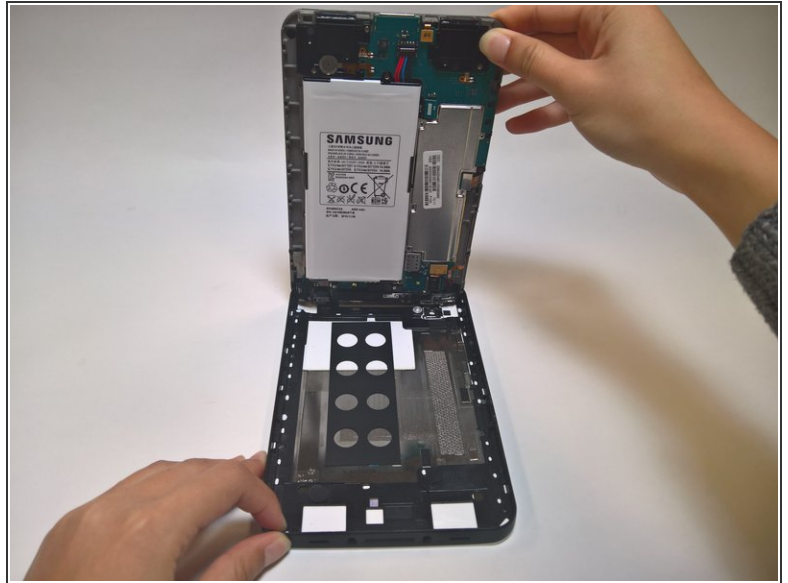
 When wedging your tool into the device, make sure to apply the pressure to the screen and device at a slow but steady speed to the screen. Too much pressure too fast can crack the screen.

Step 5



- Leave the previously used tool wedged in the device.
 - Insert another plastic opening tool into the bottom of the left side, as shown.
 - Using a similar procedure to the last step, run the tool along the side and widen the front panel-back panel gap. This time, run the device from bottom to top.
 - Repeat this process for the right side of the device, starting at the bottom of the right side.
- i** Some of the other tools that you wedged in may pop out. Simply wedge them back in where they were previously, and continue.

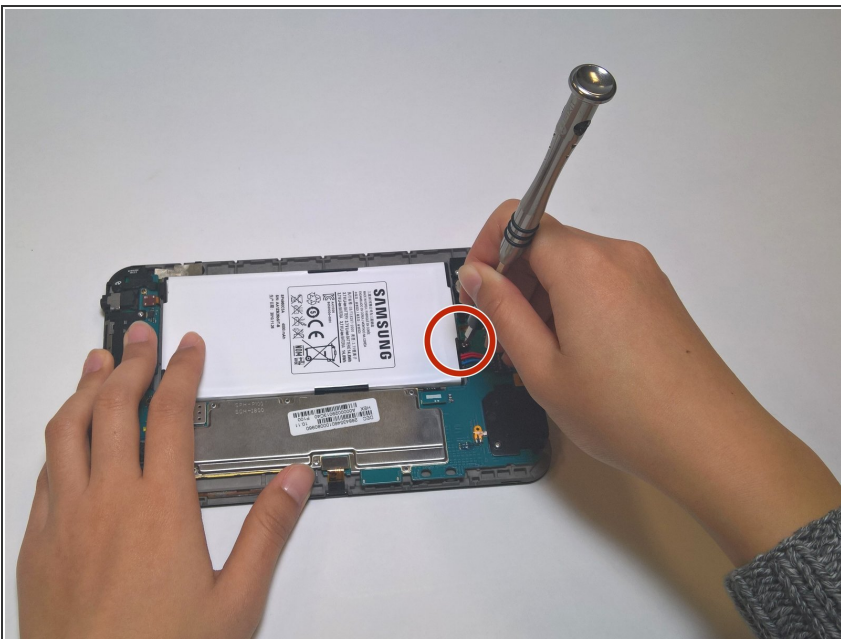
Step 6



- Holding the bottom of the device, lift the front panel from the back panel.

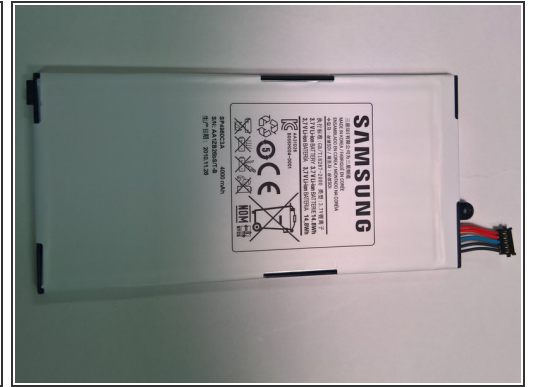
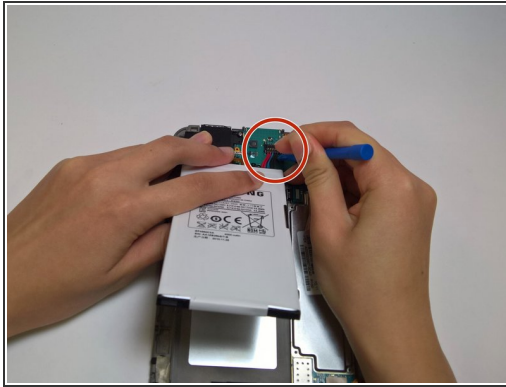
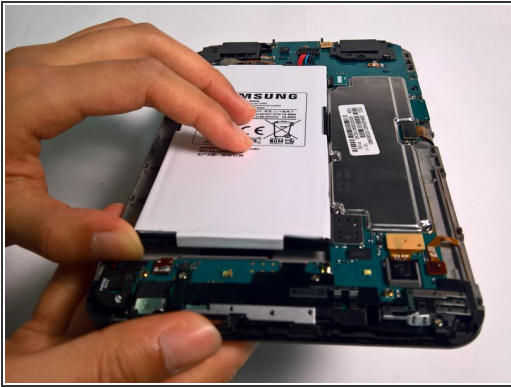
⚠ Make sure to remove the front panel slowly, to ensure that you don't accidentally break anything.

Step 7 — Battery



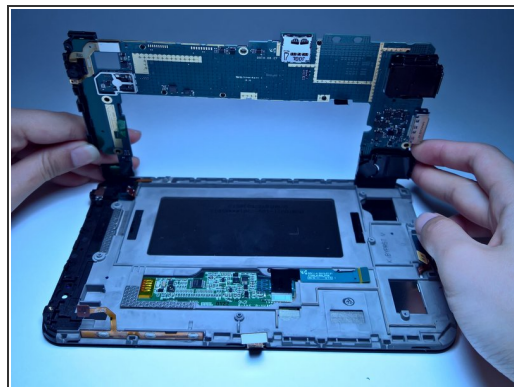
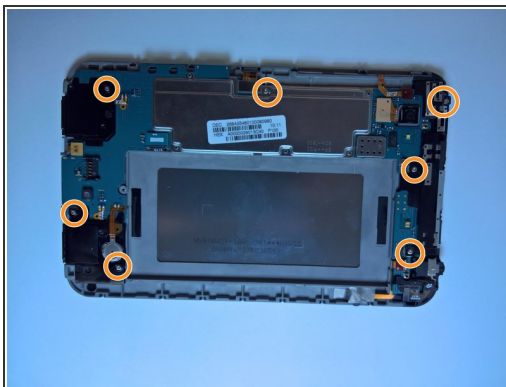
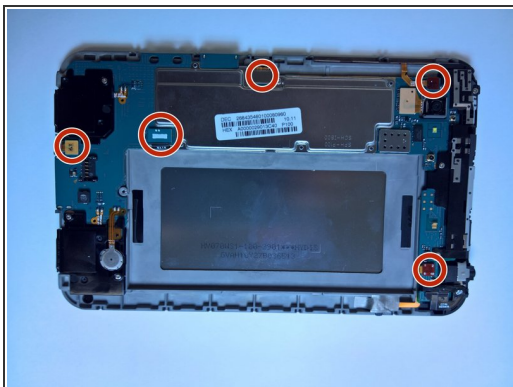
- Place the front panel on the table, with the battery facing up.
- Find the small screw that is holding the battery to the motherboard, and unscrew it using the Phillips #00 Screwdriver.
- ☑ Make sure to keep track of the screw for when you reassemble the device.

Step 8



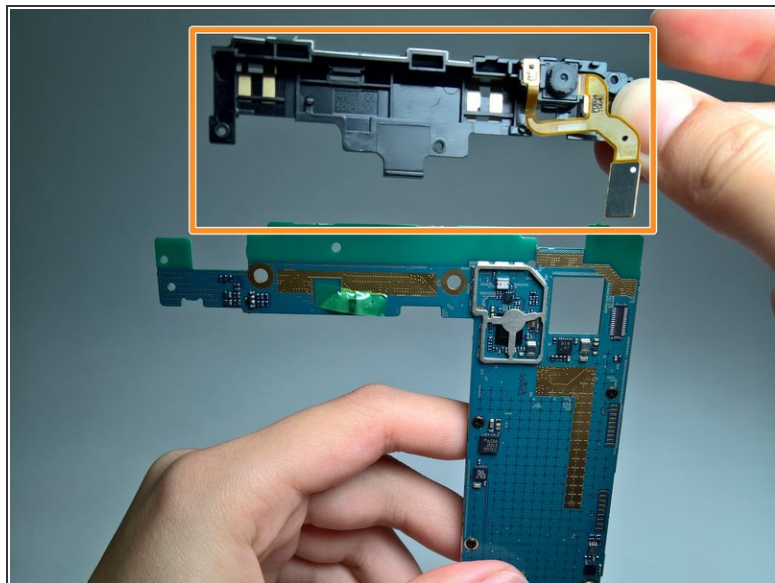
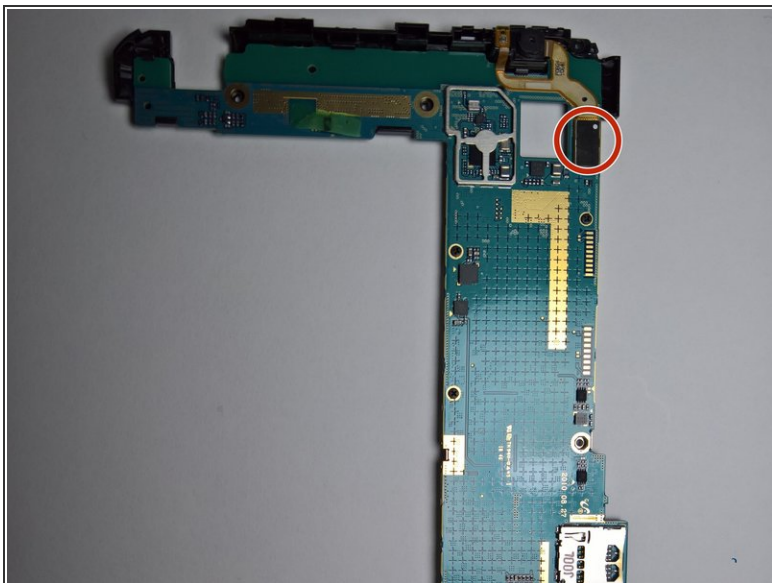
- Lift the bottom part of the battery.
 - Use a plastic opening tool to remove the battery connector from its place on the motherboard. Make sure to pull it straight up.
- ⚠ Do not poke the battery with a screwdriver or an opening tool.

Step 9 — Motherboard



- With the plastic opening tool disconnect the following 5 connectors:
 - Headphone jack/microphone cable
 - Volume control cable
 - Touchscreen cable
 - Control button LED cable
 - Display data cable
- Use the Phillips screwdriver to remove the seven screws holding down the motherboard.
- Carefully lift the motherboard away from the rear panel.

Step 10



- Turn the motherboard around and use the pry tool to remove the front camera connector.
- Remove the EMI shield from the motherboard.

To reassemble your device, follow these instructions in reverse order. Make sure all parts are aligned properly before attempting to put them back together.